

## Product datasheet for **RR204747**

### Trem2 (NM\_001106884) Rat Tagged ORF Clone

#### Product data:

**Product Type:** Expression Plasmids  
**Product Name:** Trem2 (NM\_001106884) Rat Tagged ORF Clone  
**Tag:** Myc-DDK  
**Symbol:** Trem2  
**Mammalian Cell Selection:** Neomycin  
**Vector:** pCMV6-Entry (PS100001)  
**E. coli Selection:** Kanamycin (25 ug/mL)  
**ORF Nucleotide Sequence:** >RR204747 representing NM\_001106884  
 Red=Cloning site Blue=ORF Green=Tags(s)

TTTTGTAATACGACTCACTATAGGGCGGCCGGAATTCGTCGACTGGATCCGGTACCGAGGAGATCTGCC  
 GCC**CGATCGCC**

ATGGAACCTCTCCACGTGTTTGTCTGTTGCTGGTCACAGAGCTGTCCCAAGCCCTCAACACCACAGTGC  
 TGCAGGGTGTGGCTGGTCACTCCCTGAGGGTGTCACTTATGACGCCTTGAGGCACTGGGGACGACG  
 AAAGGCCCTGGTGTGCCAGCTGGCTGAGGAGGGGCCATGCCAGCGCGTGGTGAGCACACACGGTGTGTGG  
 CTGCTGGCCTTCTGAGGAAGCAGAATGGGAGCACGGTCATCACAGATGACACCCCTTGTGGAAGTGTCA  
 CCATCACTGTAGGAACCTCCAAGCTGGTGTGATGCAGGCCTTACCAGTGTGAGGCCTCCGAGGCCGAGA  
 GGCTGAGGTCTCCAGAAGGTCTGGTGGAGGTGCTGGAGGACCTCTAGATGACCAAGATGCTGGAGAC  
 CTCTGGGTCCCGAGGAGTCAGAGAGTTTCAAGGGGCCAAGTGGAGCACAGCACCTCCAGTCAGGTTT  
 CATCCTGTGGGTACCTTAACCTACCATCTTCTCCCAAGGAGCCAATCAGGAAAGACCTTCTCCCCAC  
 CCACTTCCATTCTCTCTCCTGGCCTGTGTCTCCTGAGCAAGCTTCTTACAGCCAGCATCCTCTGGGC  
 TGTGGCCAGGGGCAGGCAGAAGCTGGAGACACCTGTGGCCAGTGGGCTAGACTG

**ACGCGT**ACGCGGCCGCTCGAGCAGAACTCATCTCAGAAGAGGATCTGGCAGCAAATGATATCCTGGATT  
 ACAAGGATGACGACGATAAGGTTTAA

**Protein Sequence:** >RR204747 representing NM\_001106884  
 Red=Cloning site Green=Tags(s)

MEPLHVFVLLLVTELSQALNTTVLQGVAGQSLRVSTYDALRHWGRRKAWCRQLAEEGPCQRVVSTHGWW  
 LLAFLRKQNGSTVITDDTLAGTVTITLRLNLAGDAGLYQCQSLRGREAEVLQKVVEVLEDPDLDQDAGD  
 LWVPEESESFEQAQVEHSTSSQVSSCGSPLTYHLPPKEPIRKDLLPTHFHSSPPGLCPPEQASYSQHPLG  
 CGQGQAEAGDTCGQWARL

**TRTRPLEQKLI**SEEDLAANDILDYKDDDDKV



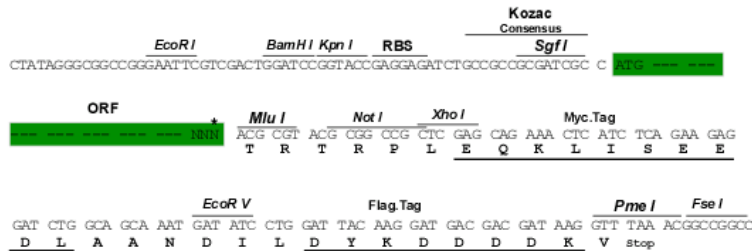
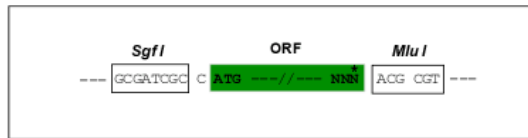
[View online »](#)

Chromatograms: [https://cdn.origene.com/chromatograms/ja2337\\_g05.zip](https://cdn.origene.com/chromatograms/ja2337_g05.zip)

Restriction Sites: SgfI-MluI

Cloning Scheme:

Cloning sites used for ORF Shuttling:



\* The last codon before the Stop codon of the ORF

ACCN: NM\_001106884

ORF Size: 684 bp

OTI Disclaimer: Due to the inherent nature of this plasmid, standard methods to replicate additional amounts of DNA in E. coli are highly likely to result in mutations and/or rearrangements. Therefore, OriGene does not guarantee the capability to replicate this plasmid DNA. Additional amounts of DNA can be purchased from OriGene with batch-specific, full-sequence verification at a reduced cost. Please contact our customer care team at [custsupport@origene.com](mailto:custsupport@origene.com) or by calling 301.340.3188 option 3 for pricing and delivery.

The molecular sequence of this clone aligns with the gene accession number as a point of reference only. However, individual transcript sequences of the same gene can differ through naturally occurring variations (e.g. polymorphisms), each with its own valid existence. This clone is substantially in agreement with the reference, but a complete review of all prevailing variants is recommended prior to use. [More info](#)

OTI Annotation: This clone was engineered to express the complete ORF with an expression tag. Expression varies depending on the nature of the gene.

Components: The ORF clone is ion-exchange column purified and shipped in a 2D barcoded Matrix tube containing 10ug of transfection-ready, dried plasmid DNA (reconstitute with 100 ul of water).

**Reconstitution Method:**

1. Centrifuge at 5,000xg for 5min.
2. Carefully open the tube and add 100ul of sterile water to dissolve the DNA.
3. Close the tube and incubate for 10 minutes at room temperature.
4. Briefly vortex the tube and then do a quick spin (less than 5000xg) to concentrate the liquid at the bottom.
5. Store the suspended plasmid at -20°C. The DNA is stable for at least one year from date of shipping when stored at -20°C.

**RefSeq:** NM\_001106884.1, NP\_001100354.1

**RefSeq Size:** 1157 bp

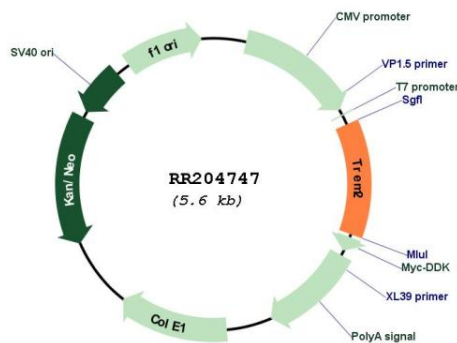
**RefSeq ORF:** 687 bp

**Locus ID:** 301227

**Cytogenetics:** 9q12

**MW:** 25.4 kDa

**Product images:**



Circular map for RR204747