

Product datasheet for **RR204663**

Abcc8 (NM_013039) Rat Tagged ORF Clone

Product data:

Product Type:	Expression Plasmids
Product Name:	Abcc8 (NM_013039) Rat Tagged ORF Clone
Tag:	Myc-DDK
Symbol:	Abcc8
Synonyms:	Sur; Sur1
Vector:	pCMV6-Entry (PS100001)
E. coli Selection:	Kanamycin (25 ug/mL)
Cell Selection:	Neomycin
ORF Nucleotide Sequence:	>RR204663 representing NM_013039 Red=Cloning site Blue=ORF Green=Tags(s)

TTTTGTAATACGACTCACTATAGGGCGCCGGGAATTCGTCGACTGGATCCGGTACCGAGGAGATCTGCC
GCC**CGATCGCC**

ATGCCTTTGGCCTTCTGCGGCACCGAGAACCCTCGGCCGCTACCGGGTGGACCAAGGCGTCTCAACA
ACGGCTGCTTCGTGGACGCGCTCAATGTGGTGCCACATGTCTTTCTGCTTTCATCACCTCCCCATCCT
TTCATCGGATGGGGCAGCCAGAGCTCCAAGGTGCACATTCACCACAGCACCTGGCTCCATTTCCGGGG
CACAACCTGCGCTGGATCCTGACCTTCATACTGCTCTTCGTCTCGTGTGTGAGATCGCTGAGGGTATCC
TGCTGACGGGGTGACAGAATCCCGCCACCTCCACTTATACATGCCAGCTGGGATGGCATTTCATGGCTGC
CATCACCTCTGTGGTCTACTACCATAACATTGAGACCTCTAACTTTCCCAAGCTGCTGATTGCTCTGCTC
ATCTACTGGACCTGGCCTTCATCACGAAGACCATCAAGTTCGTCAAGTTCACGACCACGCCATTGGCT
TCTCTCAGCTGCGCTTCTGCCTCACGGGGCTTCTGGTGATCCTCTACGGGATGCTGCTGCTTGTGGAGGT
CAATGTATCCGGGTGAGGAGATACGTCTTCTCAAGACCAAGGGAAGTAAAGCCCCCGAGGACCTA
CAGGACCTGGGTGTGCGCTTCTGCAGCCCTTCGTTAACCTGCTATCAAAGGGGACCTACTGGTGGATGA
ATGCCTTCATCAAGACTGCTCACAAGAAGCCCATCGACCTCGGGCCATCGGGAAGCTGCCATTGCCAT
GAGAGCCCTCACCAACTACCAGCGACTCTGCTTGGCCTTCGATGCCAGGCGCGGAAGGACACAGAGC
CAGCAGGGTGCCCGGCCATCTGGAGGGCTCTCTGTCATGCCTTTGGGAGACGGTGCTCCTCAGCAGCA
CATTCCGTATCCTGGCCGACCTCCTGGGCTTGTGGCCACTCTGCATCTTCGGGATCGTGGACCCT
CGGGAAGGAGAACCACGTCTCCAGCCCAAGACACAGTTTCTGGAGTTACTTTGTCTCATCCCAAGAG
TTCCTCGGCAATGCCTATGTCTTGGCTGTTCTTCTGTTCCCTTGCCTCCTGCTGCAAAGGACCTTTCTAC
AAGCCTCGTACTACGTTGCCATTGAACTGGGATCAACCTGAGAGGAGCAATCCAGACCAAGATTTACAA
TAAGATCATGCACTTGTCTACTTCCAACCTGTCCATGGGGAAATGACTGCTGGGCAGATCTGCAACCTG
GTGGCCATCGACACCAACCAGCTCATGTGGTTTTTCTTCTATGCCAAACCTCTGGGCTATGCCGTAC
AGATCATTGTGGCGGTGATCCTCCTACTACATCCTTGGGGTACGCGCCTTGATTGGAGCGGCTGTCAT
CATTCTGCTGGCTCCTGTACGTACTTTGTGGCCACCAAGCTGTCCCAGGCACAGCGGAGCACCTGGAA
TATTCCAATGAGAGGCTGAAGCAGACCAATGAGATGCTCCGGGCATCAAGTTGCTCAAGCTCTATGCGT



[View online »](#)

GGGAGAACATCTTCTGCTCCAGGGTGGAGAAGACACGCAGGAAGGAAATGACCAGCCTCAGGGCCTTCGC
 TGTCTACACCTCCATCTCCATCTTCATGAACACAGCTATCCCCATCGCTGCTGTCCTCATCACCTTCGTG
 GGCCACGTCAGCTTCTTCAAAGAGTCGGACTTCTCGCCCTCGGTGGCCTTTGCCTCTCTCTCTCTTCC
 ACATCCTGGTCACACCGCTGTTCTGCTGTCTAGTGTGGTTCCGTCCACTGTCAAGGCCCTGGTGAAGCGT
 GCAAAAGCTGAGTGAGTTCCTGTCCAGTGCAGAGATCCGTGAGGAACAGTGTGCCCCCGAGAGCCCGCA
 CCCCAGGCCAAGCGGGCAAGTACCAGGCGGTGCCCTCAAGGTCGTAACCCGCAAGCGCCAGCCCGAG
 AAGAAGTCCGGGACCTCTTGGGCCACTGCAGAGGCTGACTCCACAGCGGATGGAGACGCTGACAACCT
 CTGTGTCCAGATCATCGGAGGCTTCTTACCTGGACCCCTGATGGAATCCCCACCCTGTCCAACATCACC
 ATCCGTATCCCCGAGGTCAGCTGACCATGATCGTGGGGCAGGTGGGCTGTGGCAAGTCCTGCTCTTC
 TGGCCACCCTGGGGGAGATGCAGAAGGTCTCTGGAGCTGTCTTCTGGAACAGCAGCCTTCCAGACAGCGA
 GGGAGAAGACCCAGCAACCCAGAGCGGGAGACAGCGCCGATTCCGGATGCCAGGAGCAGAGGCCCTGTG
 GCCTACGCATCTCAGAAACCATGGCTGCTAAATGCCACTGTGGAGGAGAACATCACCTTCGAGAGTCCCT
 TCAATAAGCAACGGTACAAGATGGTCATCGAAGCCTGCTCCCTGCAGCCAGACATAGACATCCTGCCCA
 TGGAGACCAGACTCAGATTGGGGAACGGGGCATCAACTTGTCTGGTGGTCAAGCGTCAAGCAATCAGTGA
 GCCCGAGCCCTTACCAGCACCAATGTTGTCTTTTGGATGACCCCTTCTCGGCTCTGGATGTCCATC
 TGAGTGACCACCTAATGCAGGCTGGCATCCTCGAGCTGCTCCGGGATGACAAGAGGACAGTGGTCTTGGT
 GACCCACAAGCTACAGTACCTGCCTCATGCTGACTGGATCATTGCTATGAAGGATGGCACCATTAGAGG
 GAGGGGACACTCAAGGACTTCCAGAGGTCTGAGTGCCAGCTCTTTGAGCATTGGAAGACCCTCATGAACC
 GGCAGGACCAAGAGCTGGAGAAGGAGACAGTCAATGGAGAGAAAAGCCCCAGAGCCATCTCAGGGCCTGCC
 CCGTGCCATGTCTCAAGAGATGGCCTTCTGCTGGATGAGGATGAGGAGGAAGAGGAGGCAGCCGAGAGC
 GAGGAAGATGACAACCTTCTCTGTGCTGCATCAGCGAGCCAAGATCCCATGGCGAGCCTGCACCAAGT
 ATTTGTCTCTGCTGGCATCCTGCTCCTGTCCCTGCTTGTCTTCTCCAGCTGCTCAAGCACATGGTCTT
 GGTGGCATTGACTACTGGCTGGCCAAGTGGACGGACAGTGGCCTGGTCTGAGCCCCGCCGACGGAAC
 TGCTCCCTCAGCCAGGAATGTGCCCTGGACCAATCTGTCTATGCCATGGTATTACCCGTGCTCTGCAGCC
 TGGGTATCGCGCTGTGCCTTGTACCTCTGCTACTGTGGAGTGGACGGGACTGAAGGTGGCCAAGAGGCT
 GCATCGCAGCCTGCTCAACCGTATCATCTGGCTCCCATGAGGTTCTTTGAGACCACGCCCTGGGGAGT
 ATCCTGAACAGATTTTCTGACTGTAACACCATTGACCAGCATATCCCGTCCACGCTGGAGTGCCTGA
 GCAGATCCACCTTACTCTGTGCTCCGCCCTGGCTGTCATCTCTACGTCACGCCTGTGTTCTAGTGGC
 CCTTTACCCCTCGCGTCTGTGCTACTTCTCATCCAGAAGTACTCCGAGTGGCTCCAGGGACCTGCAG
 CAGCTGGACGACACAACACAGCTCCCTCTGCTCTCACACTTTGCTGAAACTGTGGAAGGACTCACCACCA
 TCCGTGCCTTACAGTACGAGGCCGGTCCAGCAGAAGCTCCTAGAGTACACCGACTCCAACAACATTGC
 CTCTCTTCTCACAGCAGCCAACAGGTGGCTGGAAAGTCCGCATGGAGTACATCGGAGCATGCGTGGTA
 CTCATCGCCGCTGCCACCTCCATCTCCAACCTCCATACACAGGGAGCTCTCAGCCGGCCTAGTAGGCCCTGG
 GCCTCACCTATGCCTTGTGGTCTCCAACCTCAACTGGATGGTGGAGAACCTGGCAGACATGGAGAT
 CCAACTGGGAGCTGTGAAGCGTATCCACACACTCCTGAAAAGTGGAGCAGAGAGCTATGAGGGGCTCCTG
 GCACCATCGCTGATCCCCAAGAAGTGGCCAGACCAAGGGAAGTCCAAATTCAAAACCTGAGTGTACGCT
 ATGACAGCTCCCTGAAGCCCGTGTGAAGCAGTCAACGCCCTCATCTCCCAGGACAGAAGATTGGGAT
 TGCGGGCCGACAGGCAGTGGAAAATCTCCTTCTCTCGCCTTTTCCGAATGGTGGATATGTTTGAA
 GGGCGTATCATCATCGATGGCATTGACATCGCCAAGCTGCCGCTGCACACGCTCCGCTCACGCTGTCTA
 TCATCCTACAGGACCCTGTTCTTTCAGTGGTACCATCAGATTAACCTGGACCCAGAGAAGAAATGCTC
 AGACAGCAGCTGTGGGAGGCTCTGGAGATCGCTCAGCTGAAGCTGGTGGTGAAGGCCCTGCCAGGAGGC
 CTGGATGCCATCATCACGGAAGGAGGGGAGAATTTAGCCAGGGCCAGAGGCAGCTGTTCTGCCTGGCCC
 GGGCCTTTGTGAGGAAGACCAGCATCTTTCATCATGGATGAAGCAACTGCCTCCATCGACATGGCTACGGA
 AAATATCCTCCAGAAGGTGGTGTGACAGCCTTCGCAGACCGCACCGTGGTCAACATCGCGCACCAGCGTG
 CACACCATCCTGAGTGCAGACCTAGTGTGGTCTGAAGAGGGGCGGATCCTGGAGTTCGACAAGCCGG
 AAAAGTCTCAGCCAGAAGGACAGCGTCTTTGCCTCCTTTGTCCGCGGGACAAA

ACGCGTACGCGGCCGCTCGAGCAGAAACTCATCTCAGAAGAGGATCTGGCAGCAAATGATATCCTGGATT
 ACAAGGATGACGACGAT AAGGTTTAA

Protein Sequence: >RR204663 representing NM_013039
 Red=Cloning site Green=Tags(s)

MPLAFCGTENHSAAYRVDQGVLNNGCFVDALNVVPHVFLFFITFPILFIGWGSQSSKVHIIHSTWLHFFPG
 HNLRWILTFILLFVLVCEIAEGILSDGVTESRHLHLYMPAGMAFMAAITSVVYYHNIETS NFPKLLIALL
 IYWTLAFITKTIKFKVFDHAIIGFSQLRFCLTGLLVILYGMILLVEVNVIRVRRYVFFKTPREVKPPEDL
 QDLGVRFLQPFVNLKSGTYWMMNAFIKTAHKPIDLRAIGKLIAMRALTNYQRLCLAFDAQARKDTS
 QQGARAIWRALCHAFGRRLVLSSTFRILADLLGFAGPLCIFGIVDHLGKENHVFQPKTQFLGVYFVSSQE
 FLGNAYVLAVLLFLALLLQRTFLQASYYVAIETGINLRGAIQTKIYNKIMHLSTSNLSMGEMTAGQICNL
 VAIDTNQLMWWFFLCPNLWAMPVQIIVGVILLYILGVSALIGA AVIILLAPVQYFVATKLSQAQRSTLE
 YSNERLKQTNEMLRGIKLLKLYAWENIFCSRVEKTRRKEMTSLRAFAVYTSISIFMNTAIPAAVLTITFV
 GHVSFFKESDFSPSVAFASLSLFHILVTPFLSSVVRSTVKALVSVQKLSFLSSAEIREEQCAPREPA
 PQGQAGKYQAVPLKVVNRKRPAREEVRDLLGPLQRLTPSTDGDADNFCVQIIGGFFWTWPDGIPTLSNIT
 IRIPRGQLTMIVGQVGCCKSSLLLATLGEMQKVS GAVFWNSLPDSEGEDPSNPERETAADSDARSRGPV
 AYASQKPWLLNATVEENITFESPFNKQRYKMVIEACSLQPDIDILPHGDQTQIGERGINLSGGQRQRISV
 ARALYQHTNVVFLDDPFSALDVHLSDHLMQAGILELLRDKRTVVLVTHKLQYLPHADWIIAMKDGTIQR
 EGTLKDFQRSECQLFEHWKTLMNQRDQELEKETVMERKAPEPSQGLPRAMSSRDGLLLDEDEEEEEAAES
 EEDDNLSVLHQRAKIPWRACTYKLSAGILLLSLLVFSQLLKHMLVAIDYWLAKWTDALVLSAARN
 CSLSQECALDQSVYAMVFTVLCSLGIALCLVTSVTVEWTGLKVAKRLHRSLLNRIILAPMRFETPLGS
 ILNRFSSDCNTIDQHIPSTLECLSRSTLLCVSALAVISYVTPVFLVALLPLAVVCYFIQKYFRVASRDLQ
 QLDDTTQLPLLSHFAETVEGLTTIRAFRYEARFQKLLLEYTDSNNIASLFLTAANRWLEVRMEYIGACVV
 LIAAATSI SNLHRELSAGLVGLGLTYALMVSNYLNMVNRNLADMEIQLGAVKRIHTLLKTEAESYEGLL
 APSLIPKNWPDQKIQIQNL SVRYDSSLKPV LKHVNALISPQKIGICGRTGSGKSSFSLAFFRMVDMFE
 GRIIDGIDIAKPLPLHTLRSRLSIIILQDPVLFSGTIRFNLDPKCKSDSTLWEALEIAQLKLVVKALPGG
 LDAIITEGGENFSQGRQLFCLARAFVRKTSIFIMDEATASIDMATENILQKVVMTAFADRTVVTIAHRV
 HTILSADLVMLKRGAILFEFDKPEKLLSQKDSVFASFVRADK

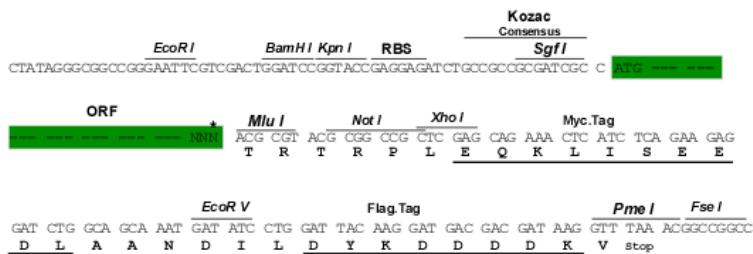
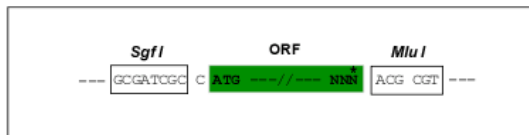
TRTRPLEQKLISEEDLAANDILDYKDDDDKV

Restriction Sites:

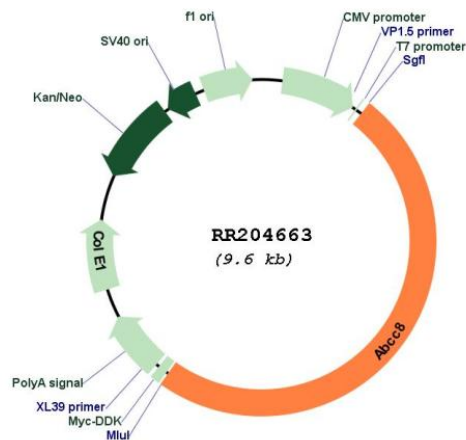
SgfI-MluI

Cloning Scheme:

Cloning sites used for ORF Shuttling:



* The last codon before the Stop codon of the ORF

Plasmid Map:


ACCN: NM_013039

ORF Size: 4746 bp

OTI Disclaimer: The molecular sequence of this clone aligns with the gene accession number as a point of reference only. However, individual transcript sequences of the same gene can differ through naturally occurring variations (e.g. polymorphisms), each with its own valid existence. This clone is substantially in agreement with the reference, but a complete review of all prevailing variants is recommended prior to use. [More info](#)

OTI Annotation: This clone was engineered to express the complete ORF with an expression tag. Expression varies depending on the nature of the gene.

Components: The ORF clone is ion-exchange column purified and shipped in a 2D barcoded Matrix tube containing 10ug of transfection-ready, dried plasmid DNA (reconstitute with 100 ul of water).

Reconstitution Method:

1. Centrifuge at 5,000xg for 5min.
2. Carefully open the tube and add 100ul of sterile water to dissolve the DNA.
3. Close the tube and incubate for 10 minutes at room temperature.
4. Briefly vortex the tube and then do a quick spin (less than 5000xg) to concentrate the liquid at the bottom.
5. Store the suspended plasmid at -20°C. The DNA is stable for at least one year from date of shipping when stored at -20°C.

RefSeq: [NM_013039.2](#), [NP_037171.2](#)

RefSeq Size:	4749 bp
RefSeq ORF:	4749 bp
Locus ID:	25559
UniProt ID:	Q09429
Cytogenetics:	1q22
MW:	177.2 kDa
Gene Summary:	binds sulfonylurea; subunit of the ATP-sensitive potassium channel K(ATP), which is composed of Sur1 and the inwardly rectifying K(+) channel subunit, Kir6.2 [RGD, Feb 2006]