

## Product datasheet for **RR204619**

### Slc37a4 (NM\_031589) Rat Tagged ORF Clone

#### Product data:

**Product Type:** Expression Plasmids  
**Product Name:** Slc37a4 (NM\_031589) Rat Tagged ORF Clone  
**Tag:** Myc-DDK  
**Symbol:** Slc37a4  
**Synonyms:** G6pt1  
**Vector:** pCMV6-Entry (PS100001)  
**E. coli Selection:** Kanamycin (25 ug/mL)  
**Cell Selection:** Neomycin  
**ORF Nucleotide Sequence:** >RR204619 representing NM\_031589  
 Red=Cloning site Blue=ORF Green=Tags(s)

TTTTGTAATACGACTCACTATAGGGCGCCGGAATTCGTCGACTGGATCCGGTACCGAGGAGATCTGCC  
 GCC**CGATCGCC**

ATGGCGGCCCAAGGCTATGGCTATTACCGCACTGTCATATTCACAGCCATGTTCCGAGGCTACAGCCTTT  
 ACTACTTCAACCGCAAACCTTCTCTTTTGTTCATGCCCTCCTGGTGGATGAGATCGCTCTGGACAAGGA  
 CGATTTGGGGCTCATCAGGAGCAGCCAGTCGGCAGCCTACGCCATCAGCAAGTTTGTGAGCGGGGTGCTG  
 TCTGATCAGATGAGTGCCCGTTGGCTCTTCTCCTCTGGGCTGCTCCTGGTTGGTCTGGTCAACGTAGTCT  
 TCTCGTGGAGCTCTACAGTGACGGCTTTTGTCTCTCTGGTTTCTTAATGGTCTGGCACAGGGGCTAGG  
 CTGGCCCCCTGTGGGAAGATCCTGAGGAAGTGGTTTGGCCATCCCAGTTTGGCACTTGGTGGGCTGTG  
 TTGTCAACCAGCATGAACCTGGCTGGAAGCCTGGGACCTATCTTGGCGACAATCCTTGTCTCAGAGCTACA  
 GCTGGCGCAGCACCCCTGGCCCTGTCTGGGTCACGTGTGTGGTTGTCTCCTTCTTCTGTCTGCTCAT  
 CCACAACGAACCTGCTGATGTTGGACTCCGAAATCTGGACCCTGCCCCCTCAAGGGCAAAGGGCTCG  
 TCAAAGGAGGAGAGCACCCCTACAGGACCTGCTGCTGTCCCCTATCTCTGGGTGCTCTCCACTGGTACC  
 TCGTGGTCTTTGGGTAAGACTTGTCTGTACAGACTGGGGCAGTCTTCTTATCCAGGAGAGAGGCA  
 GTCGGCCCTCGTGGTAGTTCTACATCAGTGCCCTAGAGGTTGGAGCCTTGTAGGCAGCATTGCAGCT  
 GGCTATCTGTCTCAGACAGGGCTATGGCAAAGGCAGGGCTGTCTGTGTATGGAAACCCCTCGCCACAGCCTGT  
 TGCTGCTCATGATGGCTGGCATGGCAGCATCCATGTTCTCTTCCGGTAACGGTGACCAGCAGCTCGCC  
 CAAGATCTGGATCCTGGTGTGGGAGCCGTGTTGGTTTCTTCTTATGGTCCCATTGCCTTGTGGGA  
 GTCATAGTAATGAGAGTGACCTCCCAACTTGTGTGGTACCTCTCATGCTATTGTGGGGCTCATGGCCA  
 ATGTGGGTGGATTTCTGGCTGGGTTACCCTTCAGTACCATCGCCAAGCACTATAGCTGGAGCACAGCCTT  
 CTGGGTGGCAGAAGTATCTGTATAGCCAGCACAGTTGTCTTCTTCTTGTCTCGAAATATCCGCACCAAG  
 ATGGGCCGAGTATCCAAGAAGGCAGAG

**ACGCGT**ACGCGGCCGCTCGAGCAGAAACTCATCTCAGAAGAGGATCTGGCAGCAAATGATATCCTGGATT  
 ACAAGGATGACGACGATAAGGTTTAA



**Protein Sequence:** >RR204619 representing NM\_031589  
 Red=Cloning site Green=Tags(s)

MAAQGYGYRTVIFTAMFGGYSLYYFNKRTFSVMPPLVDEIALDKDDLGLITSSQSAAYAISKFVSGVL  
 SDQMSARWLFSSGLLLVGLVNVVFSWSSTVTFAALWFLNGLAQGLGWPPCGKILRKWFEPSTQGTWWAV  
 LSTSMNLAGSLGPILATILAQSYSWRSTLALSGSLCVVVSFFCLLLIHNEPADVGLRNLDPAPSKGKKGS  
 SKEESTLQDLLSPYLWVLTGYLVVFGVKTCCDWDGQFFLIQERQSALVGSYSYISALEVGGLVGSIAA  
 GYLSDRAMAKAGLSVYGNPRHSLLLMMAGMAASMFLLFRVTVTSDPKIWILVLGAVFGFSSYGPIALFG  
 VIANESAPPNLCGTSHAIVGLMANVGGFLAGLPFSTIAKHYSWSTAFWVAEVICIASTVVFLLRNIRTK  
 MGRVSKKAE

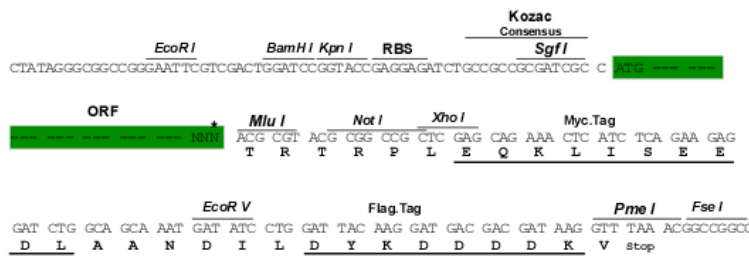
TRTRPLEQKLISEEDLAANDILDYKDDDDKV

**Restriction Sites:**

SgfI-MluI

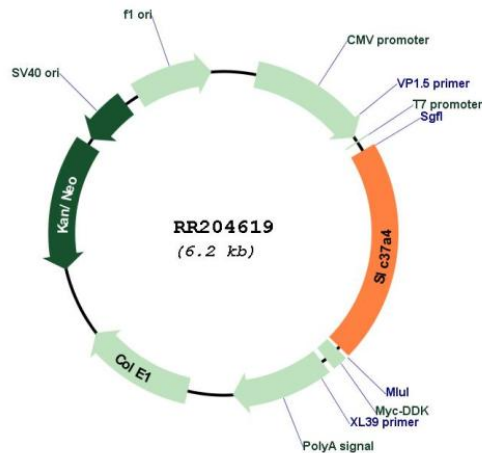
**Cloning Scheme:**

Cloning sites used for ORF Shuttling:



\* The last codon before the Stop codon of the ORF

**Plasmid Map:**



**ACCN:**

NM\_031589

<b>ORF Size:</b>	1287 bp
<b>OTI Disclaimer:</b>	The molecular sequence of this clone aligns with the gene accession number as a point of reference only. However, individual transcript sequences of the same gene can differ through naturally occurring variations (e.g. polymorphisms), each with its own valid existence. This clone is substantially in agreement with the reference, but a complete review of all prevailing variants is recommended prior to use. <a href="#">More info</a>
<b>OTI Annotation:</b>	This clone was engineered to express the complete ORF with an expression tag. Expression varies depending on the nature of the gene.
<b>Components:</b>	The ORF clone is ion-exchange column purified and shipped in a 2D barcoded Matrix tube containing 10ug of transfection-ready, dried plasmid DNA (reconstitute with 100 ul of water).
<b>Reconstitution Method:</b>	<ol style="list-style-type: none"><li>1. Centrifuge at 5,000xg for 5min.</li><li>2. Carefully open the tube and add 100ul of sterile water to dissolve the DNA.</li><li>3. Close the tube and incubate for 10 minutes at room temperature.</li><li>4. Briefly vortex the tube and then do a quick spin (less than 5000xg) to concentrate the liquid at the bottom.</li><li>5. Store the suspended plasmid at -20°C. The DNA is stable for at least one year from date of shipping when stored at -20°C.</li></ol>
<b>RefSeq:</b>	<a href="#">NM_031589.2</a> , <a href="#">NP_113777.2</a>
<b>RefSeq Size:</b>	2110 bp
<b>RefSeq ORF:</b>	1290 bp
<b>Locus ID:</b>	29573
<b>Cytogenetics:</b>	8q22
<b>MW:</b>	46.2 kDa
<b>Gene Summary:</b>	deficiency in enzyme activity in human causes glycogen storage disease type 1 (GSD-1) genetic disorders [RGD, Feb 2006]