

Product datasheet for **RR204574**

Ssc5d (NM_001134545) Rat Tagged ORF Clone

Product data:

Product Type:	Expression Plasmids
Product Name:	Ssc5d (NM_001134545) Rat Tagged ORF Clone
Tag:	Myc-DDK
Symbol:	Ssc5d
Synonyms:	RGD1565772
Vector:	pCMV6-Entry (PS100001)
E. coli Selection:	Kanamycin (25 ug/mL)
Cell Selection:	Neomycin
ORF Nucleotide Sequence:	>RR204574 representing NM_001134545 Red=Cloning site Blue=ORF Green=Tags(s)

TTTTGTAATACGACTCACTATAGGGCGCCGGAATTCGTCGACTGGATCCGGTACCGAGGAGATCTGCC
GCC**CGGATCGCC**

ATGAGGGTCTTGGCGTGTCTTCTTGAATGCTGGTGGGATCCAGGCTATAGAGCGACTCCGCTGGCTG
ATGGCCCTCATGGCTGTGCAGGACGCCTGGAGGCTGGTACAGCGGGCGCTGGGGACCGTGTGTATGA
CGGATGGGACCTTCGGGATGCTGCAGTGGCCTGCCGTGTGTTGGGCTGCGGAGGGGGCGCTAGCCGCCCC
GGGGTGCCTTCTTTGGGAGGGCACTGGGCCCGTGTGGCTCAGTGAGCTGGCCTGTCCGGGCAGTGAGG
GACAGCTGGGTATCTGTCCCCACCGGGCTGGAAGGCTCATATCTGCTCTCACGAGGAGGACCGGGCGT
CGTCTGTGTAGGTGACGCTGCAGCTAACTAGAGAAGACTCAGTGTCCCTGCTGGATGGGGACCCATGG
CTGGCACTGTCTGGGAGCTGAGCCCCAGCTCAGAGGAGCCCCCTATAACTCATGCTCCCCAGCCGGCAG
CAAGCTCCAGAAATGGCCCCGAAAGAAGAACCCCGGCCACCCAAGCAGGTCAAGTCCACCCGAGCCCC
TGTAAGTACAAATGGAGCTCCCCGCAAGAGCGGCTGCGTCTGGTCTCAGGTCCCATGGATGTGCCGGC
CGCCTGGAAGTCTGGCACGGTGGACGTTGGGACTGTCTGCGATGATGGATGGGACCTCCGAGACGCAG
CAGTGGCCTGTAGGGAGCTAGGATGTGGGGAGCGCTGGCCGCCCTGGAGGTGCCAGATTCGGACCTGG
TGAGGGACCCGTGTGGATGGACGATGTCGGGTGTGGAGGAGGAGAGGAGGCCCTCCGGGACTGTCCCGGA
AGCCCCCTGGGGCCGAGCAACTGTGACCACACAGAGGATGCAGGGCTGGTCTGTAAGTGGTCTGCACCCA
GGTTGCGCCTTGCTGATGGTCCCCACGGCTGTGCTGGGCGCTGGAGGTTTGGCATGGTGGCCGCTGGGG
GTCGGTATGTGACGATGCTTGGGATCTTCTGATGCCGCTGTGGCCTGCAGGGAGCTGGGCTGTGGGGGT
GCCCTGGCTGCCAGGGGGTGCCTTCTTGGTGGGGGCTGGACCCATCATCTGGATGACCTCAGAT
GTCGAGGAAACGAGACAGCCTTACGATTCTGCCCTGCGAGGCCCTGGGGTCAAGTACTGTCACCATCG
GGAGGATGCTGGGGCTGTGTGTGATGCCATGCCTCTCGGTGGCGATGTGCAGCCTACAGCTCCTGCAGTG
GACAGCAACAGAAACACCCAGGCTCCAGTCTACCTCAGTGGGTGATACGCCAGGCCAGCAGGAGGAGT
GGCCTCCTCTGCTTCTCCTACTGCCCTCCAGAGCCTGGACCTGAAGCTGGGTCCCCCAGTTGCGCCT
GGTGGCTGGACCCAGCAGGTGCTCTGGTGGGCTGGAGGATGGCATGATGGACGCTGGGGGACAGTATGT
GATGACAGCTGGGACATGAGAGACTCAGCTGTGGTCTGCCGGGAGCTGGGCTGTGGGGGGCCCCGACAGC



[View online »](#)

CAGACCCTGCAGCAGGCCGCTTTGGCTGGGGCGCAGGCCCATCTGGCTGGATGATGTAGTTGTGTGGG
GACGGAGGCTTCACTGTGAGAATGCCCTGCTGCTTCTGGGGAAACACAATTGCCCCACAATGAGGAT
GTCGGGGTTACCTGCACCGGGACCCCGGCCTGGACACCATCTCAGACCCCTTTCAGTTGGAGCTGGCTCC
CTGGGCTGGGTAGAGATCAGGATGCCTGGCTCCAGGAGAGCTGGCCACCAAGCCTTCTGCCAGTCTCAC
CTCCAGTGTGCTACAGAAAACCAAAAGGCTCCAGGAAAGTGCCCAAGAGTACCAAGAAGTGGGTGACT
AAAAATGCAAAGAGACCAACCACCTCAGCCCCCTGGGATACCAATCACTAAACGCCCAAGGTCCCAGGCA
CCCCAACCTCCCTAAGCCCAACCCACGTACCTCTGAGTTACCAAGAGACTTACTGCCGAGGCTCCTCG
CAGACAGACCTCACACACCACCGAAAGGCTGACCCCTAGGGTCCCCTGGGAGTGGACCTCAGAGACCGCG
GCATCACTGTCCACTCAAGGCCCAAGAAGTGACCTCTGAGGCCACCACCGCACAAACCCCTCAGACCT
CCTTGGAGCCATTTGGTGAACCCAGAAGGCTCTCTAGAATCTTCCCAGGATCCAGCTGCCACCCCGAC
TGCTGGAGTTCCTGTCATCGGGTCCCTTCCGGGTTCTGCTGGCTGATGGGCCAACAGGTGTCTGGC
CGGCTAGAGGTGTGGCATGCCGGCTCTGGGGACAGTCTGTGATGACAGCTGGGACCTCCGGGATGCCA
CAGTGGCTGCTGGAACTGGGTGCGGAAAGGTCGGCCCGAGTAGGCAAACCCACTATGGCCCTGG
CACTGGGCCATCTGGTTGGATGACATGGGCTGTAAAGGAAGTGAGACGTCAGTACTGACTGCCCTCG
GGGACATGGGGGAAGCACAACCTGTGACCACGAAGAAGACGTGGTCTCACCTGCAGTGGTACACAGGGG
ATGACGATTACCTTCTGGACCTGGGACCCACTTCGGAAGAGGACCTGACCAAAGGACCACAGTGGC
CACACAGCCTGGACATACACCTTCTGGGCTACTACCACAAACCCCTGAAGTTCTCTCCAGCAACGCGAG
AGCCTTCCAGACATAGATGACCAGGGTAGTTATGAGCTCTCTGGACATGGGATACACCTTCCAGGAAGGA
GTCTGTCAAAGGGACCCCAACCAACCAACCTGGATCCACAGTTACCACTAGCAGCAAGAGTCC
AGGCCATCCCTTCCAGCTCAAAGGGCCGTGCAACACAGGTTTACCAAGGAAGCCAAAACCTGAGCGC
CGGACGCTGCAGCCACCTCAGCCAGGACGACACACACCCTCATCCCCGGCTTCTACACCTCACCAG
AGCCTTCTGGCTCACAGCAGACCTCTGGCTCCTGGCCACAACCTTCCCAGACTTGGCTTCAAAGCAGGA
GGGACGTCTACCCCTCCAAAACATCTCCACTCACCCAGGACTTCCCTCCCAACAACTTTGCCTTG
TCCACTACTGATGCCAGTTTGTTCCAACACGTCCCCCAGAGCTTTCAGGCAGCCCAACATCCAACCTCC
CTGAAGGGCTAACCTCTGACTCCCCATGCTATTAGAAGTGAGCAGCCTTCCCCCTACCTCAGAGCTGAC
GCCAGGATCTGACATGACACCAGACCTGGGCACAGCACCAAAATAATCCAGAAAGTTCTGAGTCTCA
GACCTCCCCACGAGCCCCAGCACCCACACACAACCATTACAGCCTCTTACCCTACCAGCATCCCTCACC
CCACCACCATCCCTCATCCCACTACCCCTCATCTAGAGCCCCCTCCACCCACCACCATCCCTCA
ACTCAACACAACCTTCTACCCACCATGGCCCTGCAACCTACCACCAACCCCTCAGCATCCCGGGAGCCCT
CATCCACCAAGTCTCAACCTCCACCAACACTCACTTCTTCAACCTCTGCCACCCCAACAAGT
CCCTTCCATCCTCCCAGAGACAGAATTTCTCTCTACTCCACAACCAAGGGTCAAGCCTAGCCTACA
CCCAGATCTGACCTTGTAGGAGTCCCGCCACAGGCAAATCCCAGATGCAGAACCTAGAGTTCTCTCTA
GCCTCAGAGTCTGGCCCTCCAGGCCCTCTCCAGCCCCAAGCATGGACCCACTATCCACAGAGGTCTTCA
AACCACCCAGAAGCCAGACCTTACACTCAGTTTGAACCCATGGTGACCCTGACCTTGCATCTCCTC
TATGGCCACCCATCTGACCAACCTCCCCAGATCGCCTCGCTCAAGGGCAACTTCTAATCACAACCCA
GGTCCCTTTGGGCCATGTGTCTCCTCAGTACCCTGTAAAGGTCATGGCTTGTGAGCCACTGCCTTGG
TGGAGCTGGTGGCTGTGTGAGGAGGTGGGTGACCAGCTGCAGAGGCTGACCCGGGTCTGGAGCAGGA
CCGGCAGGAGCGCAAGTCTGGGGCTGGGCTAGTCAAGTTGGTAGAGGCTGCCAGGGGTTGGGGCAG
CTAAGTGAGACTGTAAGAGGCTTGCAGAGGTGGCTGGCCCCCAGCACACCTGTGCCCAACCAACCA
CCACAGAGGAGGAGGAGGCCTCTGAGAGGAGATGTG

ACGCGTACGCGGCCGCTCGAGCAGAACTCATCTCAGAAGAGGATCTGGCAGCAATGATATCCTGGATT
ACAAGGATGACGACGATAAGGTTTAA

Protein Sequence: >RR204574 representing NM_001134545
 Red=Cloning site Green=Tags(s)

```

MRVLACLLAMLVGIQAIERLRLADGPHGCAGRLEWVWYSGRWGTVCDGWDLRDAAVACRVLGCGGALAAP
GGAFFGEGTGPVWLSELACRGSEQLGICPHRGWKAHICSHEDAGVVCVQRAANSREDSVSLLDGDPW
LALSGELSPSSEEPPIHAPQPAASSQNGPRKKNPRPPKQVKSTRAPVL TNGAPRQERLRLVSGPHGCAG
RLEVWHGGRWGTVCDDGWDLRDAAVACRELGCGGALAAPGARFGPGEGPVWMDVCGGGEEALRDCPR
SPWGRSNCDHTEAGLVCTGPAPRLRLADGPHGCAGRLEWVWHGGRWGSVCDDAWDLRDAAVACRELGCGG
ALAAPGGAFFGEGAGPIILDDLRCRNETALRFPCARPWQHDCHHREDAGAVCDGMPLGGDVQPTAPAV
DSNRTPRLQSTSVGHTPGPAGSWPPPASPTAPPEPGPEAGSPQLRLVAGPSRCSGRLEWHDGRWGTVC
DDSWDMRDSAVVCRELGCGGPRQPDPAAGRFGWGAGPIWLDDVGCVGTEASLSECPAASWGKHNAHNE
VGVCTGTPLDITSDPFSWSWLPGLGRDQDAPLPGELATKPSASLTSVVLQKTKAPGKVPKSTKKWVT
KNAKRPTTQPPGIPITKRPRVPGTPTSLSPTPRTSELPKRLTAEAPRRQTSHITTERLTPRPWEWSETA
ASLSTQGPQEVTSATTAQTPQTSLEPFGENPEGSLESSQDPAATPTAGVPVPSGPFVRVRLADGPNRCAG
RLEVWHAGLWGTVCDDSWDLRDATVACWELGCGKVRPRVGKTHYGPGTGPWLDDMGCKGSETSLSDCPS
GTWGHKNCDEEDVVLCTGYTGDDYPSWTWDPSTSEEDLTKRRTVATQPGHTPSWATTTNPEVLSPATQ
SLPDIIDDQGSYELSWTWDTSPGRSLSKGTPTTTTKPGSTVTTSTRKSPGHFPAPRARANTGLPRKPKPER
RTLQPTSARTHTTSSPASYSPEPSGSQQTSGSWPQLFPLDASKQEGTSTPPKTSPLTPGLPSPTNFAL
STTDASLLPTRPELGSPTSNSPEGLTSDSPMLLEVSSLSPSELTPGSDMTPDLGTAPKIIPESSESS
DLPTSPSTHTQPFASYPTSIPHPTTIPHPTTTPHPRAPSHPTTIPQLNTTSYPTMALQPTTNPQHPGSP
HPTTSPQPPTNTHSSSTSATPTKSLPSSPETEFSSPTPQPRVKPSLHPDLTFVGVPPGTGKSQMQLNLEFSL
ASESGPSRSPAPSMDDLSTEVFKPPRSQTLHSVSEPMVTADLAISSMAHPSDQPPDRLAQGPTSNHNP
GPFPGPCVSSVPPVRVMACEPPALVELVAAREVGDQLQRLTRVLEQDRQERQVLGLGLVKLVEAAQGLGQ
LSETVKRLAEVAWPPSTPVPTTTTTTEEEERPLRGDV
    
```

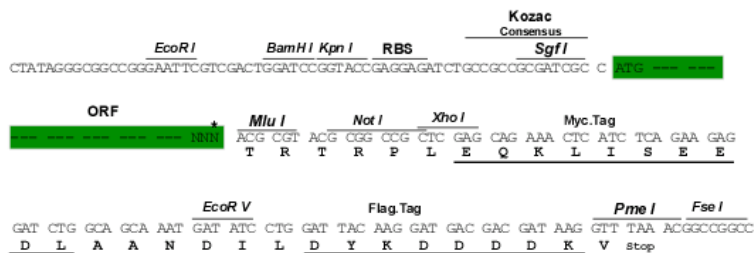
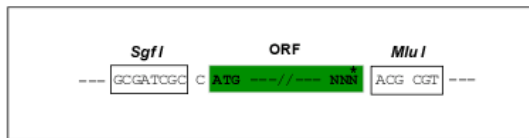
TRTRPLEQKLISEEDLAANDILDYKDDDDKV

Restriction Sites:

Sgfl-MluI

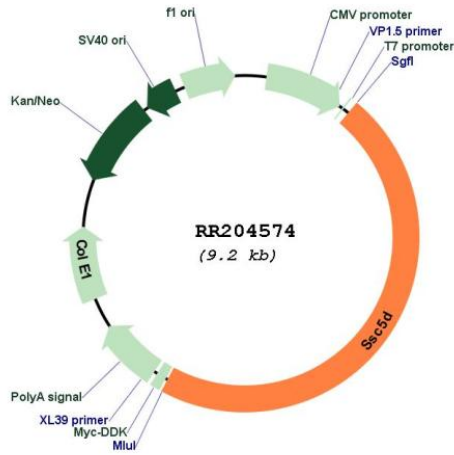
Cloning Scheme:

Cloning sites used for ORF Shuttling:



* The last codon before the Stop codon of the ORF

Plasmid Map:



ACCN: NM_001134545

ORF Size: 4308 bp

OTI Disclaimer: The molecular sequence of this clone aligns with the gene accession number as a point of reference only. However, individual transcript sequences of the same gene can differ through naturally occurring variations (e.g. polymorphisms), each with its own valid existence. This clone is substantially in agreement with the reference, but a complete review of all prevailing variants is recommended prior to use. [More info](#)

OTI Annotation: This clone was engineered to express the complete ORF with an expression tag. Expression varies depending on the nature of the gene.

Components: The ORF clone is ion-exchange column purified and shipped in a 2D barcoded Matrix tube containing 10ug of transfection-ready, dried plasmid DNA (reconstitute with 100 ul of water).

Reconstitution Method:

1. Centrifuge at 5,000xg for 5min.
2. Carefully open the tube and add 100ul of sterile water to dissolve the DNA.
3. Close the tube and incubate for 10 minutes at room temperature.
4. Briefly vortex the tube and then do a quick spin (less than 5000xg) to concentrate the liquid at the bottom.
5. Store the suspended plasmid at -20°C. The DNA is stable for at least one year from date of shipping when stored at -20°C.

RefSeq: [NM_001134545.1](#), [NP_001128017.1](#)

RefSeq Size: 4495 bp

RefSeq ORF: 4311 bp

Locus ID: 308341

Cytogenetics: 1q12

MW: 151.6 kDa