

Product datasheet for **RR204568**

Atp6v0a2 (NM_053775) Rat Tagged ORF Clone

Product data:

| | |
|--------------------|---|
| Product Type: | Expression Plasmids |
| Product Name: | Atp6v0a2 (NM_053775) Rat Tagged ORF Clone |
| Tag: | Myc-DDK |
| Symbol: | Atp6v0a2 |
| Synonyms: | Cc1-3; J6b7; Tj6 |
| Vector: | pCMV6-Entry (PS100001) |
| E. coli Selection: | Kanamycin (25 ug/mL) |
| Cell Selection: | Neomycin |



[View online »](#)

ORF Nucleotide Sequence:

>RR204568 representing NM_053775
 Red=Cloning site Blue=ORF Green=Tags(s)

TTTTGTAATACGACTCACTATAGGGCGGCCGGGAATTCGTCGACTGGATCCGGTACCGAGGAGATCTGCC
 GCC**CGCATCGCC**

ATGGGCTCCCTCTCCGTAGCGAGAGCATGTGCCTGGCGCAGCTCTTCTGCAGTCGGGCACGGCCCTACG
 AGTGTCTGAGCGCGCTTGGCGAGAAGGGCTGGTGCAGTTCGAGACCTCAACCAAAATGTAAGTCTTT
 CCAAAGAAAATTCGTTGGTGAGGTAAAGAGGTGTGAAGAAGTACGAACGAATATTGGTGTACCTGGTGCAG
 GAAATCACCAGAGCTGATATCCCTGCCTGAGGGAGAGGCCAGTCTCCCGCACCACTGTAAACATG
 TTCTAGAAATGCAGGAGCAGCTGCAGAAGCTCGAGGTGGAGCTCAGAGAAGTACCAAGAACAAGGAGAA
 GCTGAGGAAGAACCTGCTGGAGCTGGTGGAGTATACCCACATGCTGAGGGTACCAAGACCTTCTTAAA
 CGGAACGTGGAGTTGAGCCAATTACGAAGAGTCCCGCCTTAGAGAGCGACTCTCTGTTGGACTACA
 GCTGCATGCAGCGCTGGGCGCAAGCTGGGATTCGTTTCTGGCCTGATTCAGCAAGGCAAAGTGAAGC
 ATTTGAAAGAATGCTGTGGCGGGCTGCAAAGGTACACCATTGTGACCTATGCAGAGCTGGACGAGGCC
 CTGGAAGACCCTGAGACGGGTGAAGTCATAAAGTGGTATGTGTTCTGATCTCGTTTTGGGAGAGCAGA
 TTGGCCACAAGGTTAAGAAGATCTGTGACTGTTACCCTGCCACATCTACCCGTATCCAACACGGCCGA
 GGAGCGCAGGGAGATCCAGGAGGGGCTCAATACTCGGATCCAAGACCTTTACTGTGCTGCACAAAACG
 GAGGACTACCTGCGGCAAGTGTGTGCAAGGCTGCCGAGTCCGTGTGCAGCCGTGTGATACAGGTGCGGA
 AGATGAAAGCCATCTACCACATGCTCAACATGTGCAGCTTTGACGTCACCAACAAGTGCCTCATAGCTGA
 GGTCTGGTGCCCCGAGGTGGACCTGCCCGCTTGGCAGAGCGCTGGAGGAAGGCTCGAGAGAAAGTGA
 GCTACAATCCCCTCGTTCATGAACACAATCCCTACGAAAGAAACGCCCCCACTGTATCCGACCAACA
 AATTCATGAAGTTCAGAACATCGTGGATGCCTACGGTGTGGGAGCTACAGAGAAGTGAACCCAGC
 TTTGTTACCATCATCACCTCCCGTTCCTGTTTGGCGTGATGTTGGTACTTGGGACAGGCTTTGTC
 ATGTTCTGTTTGCCTCTTACTGGTGTGAATGAGAATCACCCAGACTAAGCCAGTCACAGGAGATCC
 TTAGGATGTTCTTTGATGGCCGATATATCTGCTGCTGATGGGGCTGTTCTCCGTGTACACCGCCCTCAT
 CTACAAGACTGCTTCTCCAAGTCCCTGAACCTCTTTGGCTCTGGGTGGAACGTGTCTGCCATGTACAGT
 TCCAGCCACTCCCAGAGGAGCAAAGGAAAATGGTGTGTTGGAATGACAGCACCATCAGGCACAGCAGGA
 CGCTGCAGCTGGACCCAAACATCCCTGGAGTTTCCGAGGCCCTACCCTTTCGGCATCGATCCTATTTG
 GAACCTGGCCACAAATCGCCTCACGTTCTCAACTCCTTCAAGATGAAGATGTCTGTGATTTTAGGAATT
 TTTACATGACCTTTGGTGTCTTCTGGGAATATTTAACCCTTGCACCTCAGGAAGAAGTCAACATCT
 ACCTGGTCTCGGTCCCGGAGATCCTGTTATGCTCTGCATCTTTGGGTACCTGATTTTCATGATCATCTA
 CAAGTGGCTGGCCTACTCGGCAGAGACCTCCAGAGAGGCCCCAGCATCCTCATCGAGTTCATTAACATG
 TTCTGTTCCCGTCCAGTGAGACACACGGCCTCTACCCGGGGCAGGCACACGTCAGAAAGGTGTTGTTGG
 CTCTCACCGTGTGGCTGTCCCTGTGCTCTTCTGGGAAAGCCGCTCTTCTGCTGTGGCTGCACAAATGG
 GCGCAGTTGCTTCGGCGTGAGCCGGAGCGGCTACACGCTCGTGAGGAAGGACAGCGAGGAAGAGGTGCT
 CTCTAGGCAGCCAGGACATAGAGGAGGGGAACAACCGCATGGAAGAGGGCTGCCGAGAAATGACCTGTG
 AGGAGTTAACTTCGGGGAGATCCTGATGACTCAGGCCATCCACTCCATCGAGTACTGCCTGGATGTGCTG
 CTCCAACACTGCGTCTACCTGAGGCTTTGGGCTCTCAGCCTGGCACACGCACAGCTCTCGGATGTGCTG
 TGGGCCATGCTGATGCGTGTAGGCTGCGTGTGGAACAACACTTACGGGGTCTGCTGCTGCTGCCGTCA
 TGACTTTCTTTCAGTTCGACCGTTTTATCCTTCTGGTGTGGAAGGGCTTTCTGCATTTCTCCACGC
 CATCCGGCTTCACTGGGTAGAATTTCAGAACAATTTACGTTGGTGCAGGTACCAAATTCGTTCTTTTC
 TCCTTCAGTCTGCTGCTCCAAGTTCAGTAAAGATGACAGCATAGCA

ACGGTACGCGGCCGCTCGAGCAGAACTCATCTCAGAAGAGGATCTGGCAGCAATGATATCCTGGATT
 ACAAGGATGACGACGATAAGGTTTAA

Protein Sequence: >RR204568 representing NM_053775
Red=Cloning site Green=Tags(s)

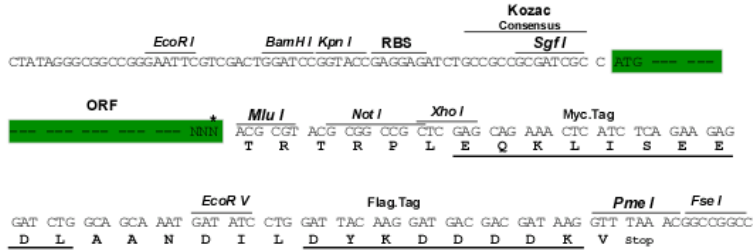
MGSLFRSESMCLAQLFLQSGTAYECLSALGEKGLVQFRDLNQNVSFQRK FVGEVKRCEELERILVYL VQ
EITRADIPLPEGEASPPAPPVKHVLEMQEQLQKLEVELREVTKNKEKLRKNLLELVEYTHMLRVTKTFLK
RNVEFEPTYEEFPALESDSLDDYSCMQR LGAKLGFVSGLIQQGKVEAFERMLWRACKGYTIVTYAELDEA
LEDPETGEVIKWYVFLISFWGEQIGHKVKKICDCYHCHIYPYNTAEERREIQEGLNTRIQLDLYTVLHKT
EDYLRQVLCKAAESVCSRVIQVRKMKAIYHMLNMCSFDVTNKCLIAEVWCPEVDLPGLRRALEEGSRESG
ATIPSFMNTIPTKETPPTLIRTNKFTEGFQNIVDAYGVGSYREVNPA LF T I I T F P F L F G V M F G D L G H G F V
MFLFALLLVLNENHPRLSQQEILRMFFDGRYILLMGLFSVYTGLIYNDCFSKSLNLFSGSGWNVSAMYS
SSHSPPEQRKMVLWNDSTIRHSRTLQLDPNIPGVFRGPYPFGIDPIWNLATNRLTFLNSFKMKMSVILGI
FHMTFGVILGIFNHLHFRKKFNIYLVSVPEILFMLCIFGYLIFMIYKWLAYS AETSREAPSILIEFINM
FLFPSSETHGLYPGQAHVQKVL LALTVLAVPVLFLGKPLFLLWLHNGRSCFGVSRSGYTLVRKDSEEEVS
LLGSQDIEEGNRMEEGCREMTCEEFNFG EILMTQAIHSIEYCLGCSINTASYLRLWALSLAHAQLSDVL
WAMLMRVGLRVDNTYGVLLLLPVMTFFAVLTVFILLVMEGLSAFLHAIRLHWVEFQNKFYVGAGTKFVPF
SFLLSSKF SKDDSDIA

TRTRPLEQKLI SEEDLAANDILDYKDDDDKV

Restriction Sites: Sgfl-MluI

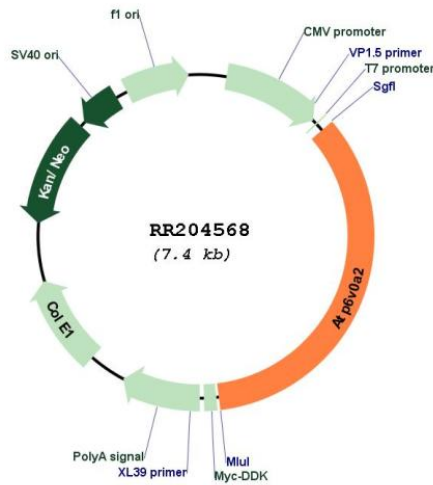
Cloning Scheme:

Cloning sites used for ORF Shuttling:



* The last codon before the Stop codon of the ORF

Plasmid Map:



| | |
|-------------------------------|---|
| ACCN: | NM_053775 |
| ORF Size: | 2568 bp |
| OTI Disclaimer: | The molecular sequence of this clone aligns with the gene accession number as a point of reference only. However, individual transcript sequences of the same gene can differ through naturally occurring variations (e.g. polymorphisms), each with its own valid existence. This clone is substantially in agreement with the reference, but a complete review of all prevailing variants is recommended prior to use. More info |
| OTI Annotation: | This clone was engineered to express the complete ORF with an expression tag. Expression varies depending on the nature of the gene. |
| Components: | The ORF clone is ion-exchange column purified and shipped in a 2D barcoded Matrix tube containing 10ug of transfection-ready, dried plasmid DNA (reconstitute with 100 ul of water). |
| Reconstitution Method: | <ol style="list-style-type: none">1. Centrifuge at 5,000xg for 5min.2. Carefully open the tube and add 100ul of sterile water to dissolve the DNA.3. Close the tube and incubate for 10 minutes at room temperature.4. Briefly vortex the tube and then do a quick spin (less than 5000xg) to concentrate the liquid at the bottom.5. Store the suspended plasmid at -20°C. The DNA is stable for at least one year from date of shipping when stored at -20°C. |
| RefSeq: | NM_053775.3 , NP_446227.2 |
| RefSeq Size: | 2571 bp |
| RefSeq ORF: | 2571 bp |
| Locus ID: | 116455 |
| Cytogenetics: | 12q15 |
| MW: | 98 kDa |
| Gene Summary: | tumor associated antigen; may play a role in immune response [RGD, Feb 2006] |