

Product datasheet for **RR204562**

Mybl2 (NM_001106536) Rat Tagged ORF Clone

Product data:

Product Type:	Expression Plasmids
Product Name:	Mybl2 (NM_001106536) Rat Tagged ORF Clone
Tag:	Myc-DDK
Symbol:	Mybl2
Mammalian Cell Selection:	Neomycin
Vector:	pCMV6-Entry (PS100001)
E. coli Selection:	Kanamycin (25 ug/mL)



[View online »](#)

ORF Nucleotide Sequence:

>RR204562 representing NM_001106536
 Red=Cloning site Blue=ORF Green=Tags(s)

TTTTGTAATACGACTCACTATAGGGCGGCCGGAATTCGTGACTGGATCCGGTACCGAGGAGATCTGCC
 GCC**CGGATCGCC**

ATGTCTCGGCGGACGCGCTGTGAGGAAGTGGATGAGTTACGCTACCAGGACACGGACTCAGACCTCCTGG
 AGCAGAGAGACAACAAATGTAAGGTCAAATGGACCCACGAGGAGGATGAGCTACTGAGGGCCCTGGTGAG
 GCAGTTTGGACAGCAAGACTGGAAGTTCCTGGCCAGTCACTTTCCCTAACCGCACAGACCAGCAATGCCAG
 TACCGGTGGCTGAGGGTTTTGAATCCAGACCTTGTAAAGGGACCGTGGACCAAAGAGGAAGATCAGAAGG
 TCATTGAGCTGGTCAAGAAGTACGGCACAAAACAGTGGACGCTCATTGCCAAGCACCTGAAGGGCCGTCT
 TGGGAAGCAGTGTCTGAGCGCTGGCACAACCATCTCAACCCTGAGGTGAAGAAGTCTGCTGGACAGAG
 GAGGAAGATCGGATCATCTGTGAGGCCATAAAGTGTGGCAACCGCTGGGCTGAGATCGCCAAGATGC
 TGCCAGGGAGGACAGACAATGCTGTGAAGAATCACTGGAATCCACCATCAAAGGAAAGTCGACACGGG
 AGGGTTCCCAAACGAGTCCAGAGACTGCAAGCCTGTCTACTTGTCTTGGAGCTCGAGGACAAGGATTAC
 CAACAGAATGTCCAGCCTGTGGAAGGCCCGGAAGTCTTGTGAGCAGCTGGCCCCCTGGCGCCCTCTACTG
 TGAAGGAGGAGGAGAGCAGCGAGGAGGAGGCTGCCGTGGCTACTACTTCTAAGGAACACAAGCAGGAGCC
 CGTCCCCACTGATCTGGGGGAAGTGCACACCCAGAGCCCTGGAATTCCTCAAGCGTGAATACCAGGAG
 GAATCCTCCCCAGAAACAAGCCTGCCCTACAAGTGGTGGTGGAGGCCGGAACCTCCTCATCCCTGCTG
 TGGAGTCCAGCCTCTCCGAAGCTCTGGACTTGTGAGTCCGACCCCGATGCTTGGTGTGACCTCAGTAA
 ATTTGATCTTCTGAAGAACCGTCTGCAGAGGGCAGTGTCAACAGTAGCCAGTGAACCTCCAGACACCG
 CAGCAGCAGCAACAGCACAGCAGGACTGTCTTCCACCAGGCTGCCACACCAGGGCCAGTGTGACTG
 AGTATCGCCTTGATGGCCACACTATTTCCAGACCTGAGCCGAGCAGCCGGGAGAGCTGATCCCCATTTCC
 CCAAGCACTGAGTTTGGGGGCTCAGGCATTGGCACACCCGCCCTCAGTGTCAAGCGACAGAAGAACCG
 CGCGTGGCCCTGTGCGCTGTACAGAGAACAGTGCAGCTTGTCTTCCCTGGACTCCTGTAATAGCCTTA
 CCCCAGAGACACACTGTCAAACCTTCCCTTCTCCTTCCAGTTTCTGAACTTCTGGAACAAACA
 GGATACCCTGGAGTTGGAGAGCCCTCCCTGACGTCCACTCCGGTGTGCAGCCAAAAGGTGGTAGTCACC
 ACACCCTGCACAGGGATAAGACGCCCTGCACCAGAAGTATCCATCGTTTGTAAACCCAGATCAGAAGT
 ATTCCATGGACAACACTCCCCACACCAACCCCGTTCAAGAATGCTCTGGAGAAATATGGACCACTGAA
 ACCCTGCCCAAACCCACACCTGGAAGAGGACTTGAAGGAGGTGCTTCGTTCCGAGGCTGGCATTGAG
 CTCATCATTGAGGATGACATGAGACCCGAGAAACAGAAGAGAAAGCCTGGGCTCCGGCGAAGCCCTATCA
 AGAAGGTTCCGAAAGTCTCTGGCTCTTGACATTGTGGATGAGGATGGGAAGATGATGTCATCGACCTCGCC
 CAAGACTCTGTCTTGGCAACCAAGTGTCCCATCCAGCTCCTCTGGCTTCTCTTGGCCGGTATCAAGGAG
 GATAACAGCCTGCTCAACCAGGGCTTCTACAGGCCAAACCCGAGAAGGTGGTGGCCACCCAGAAGCCCC
 GGAGCCACATTCCAGCCCTGCTCCTATGACCCGTGCCTGGAAGACGGTGGCCTGTGGGGGCACTAAGA
 CCAGCTTTCATGCAAGAGAAGGCCCGGCAGCTCCTGGGCCGTCTGAAGTCCAGCCACACATCTCGGACC
 CTCATTCTGTCC

ACGCGTACGCGGCCGCTCGAGCAGAACTCATCTCAGAAGAGGATCTGGCAGCAAATGATATCCTGGATT
 ACAAGGATGACGACGATAAGGTTTAA

Protein Sequence: >RR204562 representing NM_001106536
 Red=Cloning site Green=Tags(s)

```
MSRRTRCEELDELRYQDTSDDLLEQRDNKCKVKWTHEEDELRLALVRQFGQDQWKFLASHFPNRDQQCQ
YRWLRVLNPDLVKGPWTKKEEDQKVIELVKKYGTKQWTLIAKHLKGRLGKQCRERWHNHLNPEVKKSCWTE
EEDRIICEAHKVLGNRWAEIAKMLPGRDNAVKNHWNSTIKRKVDTGGFPNESRDCKPVYLLLELDKDY
QQNVQPVVEGPGSLVSSWPLAPSTVKEEESSEEEAAVATTSKEHKQEPVPTDLGEVRTPEPLEFLKREYQE
ESSPETSLPYKWWVEANLLIPAVESSLSEALDLIESDPDAWCDLSKFDLPEEPSAEGSVNSSPVQLQTP
QQQQHQQALSFHQAATPGPSVTEYRLDGHTISDLSRSSRGELIPI SPSTEFGGSGIGTPPSVLKRQKRR
RYALSPVTENSASLSFLDSCNSLTPKSTPVKTLPFSPSQFLNFWNKQDTLELESPSLTSTPVCSQKVVVT
TPLHRDKTPLHQKYPFVTPDQKYSMDNTPHTPTPFKNALEKYGPKPLPQTPHLEEDLKEVLRSEAGIE
LIIEDMRPEKQKRKPLRRSPIKKVRKSLALDIVDEDGKMMSSTSPKTL SLPSTVPSSSSGFI LPGIKE
DNSLLNQGFLQAKPEKVATQKPRSHIPAPAMTRAWKT VACGGTKDQLFMQEKARQLLGRLLKSSHTSRT
LILS
```

TRTRPLEQKLI SEEDLAANDILDYKDDDDKV

Restriction Sites:

SgfI-MluI

Cloning Scheme:

Cloning sites used for ORF Shuttling:



* The last codon before the Stop codon of the ORF

ACCN: NM_001106536

ORF Size: 2112 bp

OTI Disclaimer: The molecular sequence of this clone aligns with the gene accession number as a point of reference only. However, individual transcript sequences of the same gene can differ through naturally occurring variations (e.g. polymorphisms), each with its own valid existence. This clone is substantially in agreement with the reference, but a complete review of all prevailing variants is recommended prior to use. [More info](#)

OTI Annotation: This clone was engineered to express the complete ORF with an expression tag. Expression varies depending on the nature of the gene.

Components: The ORF clone is ion-exchange column purified and shipped in a 2D barcoded Matrix tube containing 10ug of transfection-ready, dried plasmid DNA (reconstitute with 100 ul of water).

- Reconstitution Method:**
1. Centrifuge at 5,000xg for 5min.
 2. Carefully open the tube and add 100ul of sterile water to dissolve the DNA.
 3. Close the tube and incubate for 10 minutes at room temperature.
 4. Briefly vortex the tube and then do a quick spin (less than 5000xg) to concentrate the liquid at the bottom.
 5. Store the suspended plasmid at -20°C. The DNA is stable for at least one year from date of shipping when stored at -20°C.

RefSeq: [NM_001106536.1](#), [NP_001100006.1](#)

RefSeq Size: 3710 bp

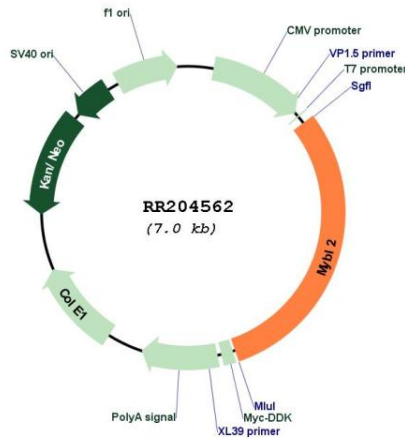
RefSeq ORF: 2115 bp

Locus ID: 296344

Cytogenetics: 3q42

MW: 79.6 kDa

Product images:



Circular map for RR204562