

Product datasheet for **RR204544**

Lingo1 (NM_001100722) Rat Tagged ORF Clone

Product data:

Product Type:	Expression Plasmids
Product Name:	Lingo1 (NM_001100722) Rat Tagged ORF Clone
Tag:	Myc-DDK
Symbol:	Lingo1
Synonyms:	Lrrn6a
Vector:	pCMV6-Entry (PS100001)
E. coli Selection:	Kanamycin (25 ug/mL)
Cell Selection:	Neomycin



[View online »](#)

ORF Nucleotide Sequence:

>RR204544 representing NM_001100722
 Red=Cloning site Blue=ORF Green=Tags(s)

TTTTGTAATACGACTCACTATAGGGCGGCCGGAATTCGTCGACTGGATCCGGTACCGAGGAGATCTGCC
 GCC**CGGATCGCC**

ATGCAGGTGAGCGAGAGGATGCTGGCAGGGGGTATGAGAAGCATGCCAGCCCCCTCTGGCCTGCTGGC
 AGCCCATCTCTGCTGGTCTGGGCTCTGTGCTGTAGGCTCCGCCACCGGCTGCCCGCCCCGCTGCGA
 GTGCTCAGCGCAGGACCGAGCAGTGTCTGTACCCGCAAGCGCTTTGTGGCGGTGCCCGAGGGCATCCCC
 ACCGAGACTCGCCTGCTGGACCTGGGCAAAAACCGCATCAAGACACTCAACCAGGACGAGTTTGCCAGTT
 TCCCACACCTGGAGGAGCTAGAACTCAATGAGAACATTGTGAGCGCTGTGGAGCCGGGCGCTTCAACAA
 CCTCTTCAACCTGAGGACGCTGGGGCTTCGAGCAACCGCTGAAGCTCATCCCGCTGGGCGTCTTACC
 GGCCTCAGCAACTTGACCAAGCTGGACATCAGCGAGAACAAGATCGTCATCTCTGCTAGACTACATGTTCC
 AAGACCTATAAACCTCAAGTCGCTGGAGTGGGCAACATGACCTCGTCTACATCTCCCATCGAGCCTT
 CAGCGGCCTCAACAGCCTGGAACAGCTGACGCTGGAGAAATGCAATCTGACCTCCATCCCCACTGAGGCA
 CTCTCCACCTGCATGGCCTCATCGTCTCGGGCTACGACACCTCAACATCAATGCCATACGGGACTACT
 CTTTCAAGAGGCTGTACCGACTCAAGTCTTAGAGATCTCCCACTGGCCCTACCTGGACACCATGACCCC
 CAACTGCCTCTACGGCCTCAACCTGACATCCCTATCTATCACGCACTGCAACCTGACAGCCGTGCCCTAT
 CTGGCAGTGGCCACCTGGTCTATCTCCGTTTCTCAATCTTCTTCTACAACCCCATCGGTACAATCGAGG
 GCTCCATGCTGCATGAGCTGTGCGGTTGCAAGAGATCCAACCTGGTGGGCGGGCAGCTGGCCGTGGTGA
 GCCCTACGCCCTTCGTGGGCTCAATTACCTGCGTGTGCTCAATGTTTCTGGCAACCAGCTGACCACCCTG
 GAGGAGTCAGCCTTCCACTCGTGGGCAACCTGGAGACGCTCATTCTGACTCCAACCCACTGGCCTGTG
 ACTGCCGCTGCTGTGGGTGTTCCGGCGCCGCTGGCGGCTCAACTTCAACAGGCAGCAGCCTACCTGCGC
 CACACCTGAGTTCGTCCAGGGCAAGGAGTTCAAGGACTTCCCGATGTGCTCTACCCAACTACTTACC
 TGCCGCCGGGCCACATCCGGGACCGCAAGGCACAGCAGGTGTTTGTAGATGAGGGCCACACGGTGCAGT
 TCGTATGCCGGGCAGATGGCGACCCTCCACCAGCTATCCTTTGGCTCTACCCCGCAAGCACTTGGTCTC
 AGCCAAGAGCAATGGGCGGCTCACAGTCTTCCCTGATGGCAGCTGGAGGTGCGCTACGCCAGGTACAG
 GACAACGGCAGTACCTGTGCATCGCAGCAATGCAGGCGGCAACGACTCCATGCCCGCCCACTTGCATG
 TGCGCAGTACTCGCTGACTGGCCCCATCAACCAACAAGACCTTCGCCTTCTCTCAACCAGCCAGG
 CGAGGGAGAGGCCAACAGCACCCGCGCCACTGTGCCTTCCCTTCGACATCAAGACGCTCATCATGCC
 ACCACCATGGGCTTCATCTCCTTCTGGGCGTGGTCTATTCTGCCTGGTGTGCTGTTTCTATGGAGCC
 GGGGCAAAGGCAACACAAGCACAAATCGAAATTGAATATGTGCCCGGAAATCGGACGCAGGCATCAG
 CTCAGCTGATGCACCCCGCAAGTTCAACATGAAGATGATA

ACGCGTACGCGGCCGCTCGAGCAGAAACTCATCTCAGAAGAGGATCTGGCAGCAATGATATCCTGGATT
 ACAAGGATGACGACGATAAGGTTTAA

Protein Sequence:

>RR204544 representing NM_001100722
 Red=Cloning site Green=Tags(s)

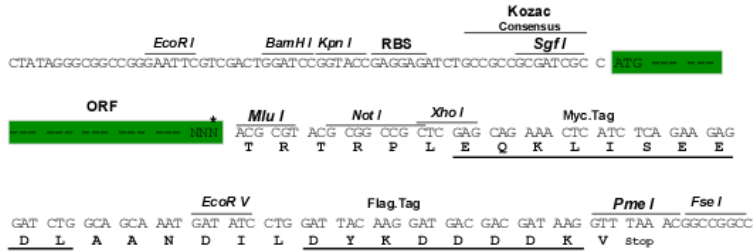
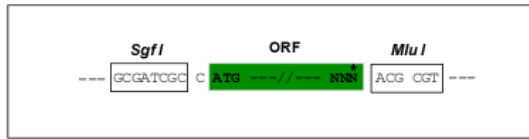
MQVSRMLAGMRSMPSPILLACWQPILLVLLVLSVLSGSATGCPPRCECSAQDRAVLCHRKFVAVPEGIP
 TETRLLDLGNRIKTLNQDEFASFPHLEELNENIVSAVEPGAFNLFNLRTLGLRSNRLKLIPLGVFT
 GLSNLTKLDISENKIVILLDYMFDLYNLKSLVEGDNDLVYISHRAFSGLSNSLEQLTLEKCNLTSIPTEA
 LSHLHGLIVLRLRHLNINAIRDYSFKRLYRLKVEISHWPYLDTPNCLYGLNL TSLSITHCNLTAVPY
 LAVRHLVYLRFLNLSYNPIGTIEGSMHELLRLQEIQLVGGQLAVVEPYAFRGLNLYLRLNVSGNQLTTL
 EESAFHSVGNLETLILDSNPLACDCRLLWVFRWRWLNFRNQPTCATPEFVQGKEFKDFPDVLLPNYFT
 CRRAHIRDRKAQQVFVDEGHTVQFVCRADGDPPPAIWLSPRKHLVSAKSNLTVFPDGTLEVRYAQVQ
 DNGTYLCAANAGGNDSPAHLHVRSPDWHPQPNKTFAFISNQPGEGEANSTRATVPFPFDIKTLIIA
 TTMGFIISFLGVVLFCLVLLFLWSRKGNTKHNIEIEYVPRKSDAGISSADAPRKFNMKMI

TRTRPLEQKLISEEDLAANDILDYKDDDDKV

Restriction Sites: SgfI-MluI

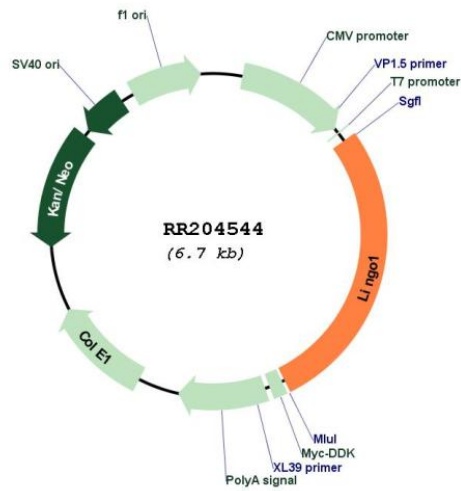
Cloning Scheme:

Cloning sites used for ORF Shuttling:



* The last codon before the Stop codon of the ORF

Plasmid Map:



ACCN: NM_001100722

ORF Size: 1860 bp

OTI Disclaimer:	The molecular sequence of this clone aligns with the gene accession number as a point of reference only. However, individual transcript sequences of the same gene can differ through naturally occurring variations (e.g. polymorphisms), each with its own valid existence. This clone is substantially in agreement with the reference, but a complete review of all prevailing variants is recommended prior to use. More info
OTI Annotation:	This clone was engineered to express the complete ORF with an expression tag. Expression varies depending on the nature of the gene.
Components:	The ORF clone is ion-exchange column purified and shipped in a 2D barcoded Matrix tube containing 10ug of transfection-ready, dried plasmid DNA (reconstitute with 100 ul of water).
Reconstitution Method:	<ol style="list-style-type: none"> 1. Centrifuge at 5,000xg for 5min. 2. Carefully open the tube and add 100ul of sterile water to dissolve the DNA. 3. Close the tube and incubate for 10 minutes at room temperature. 4. Briefly vortex the tube and then do a quick spin (less than 5000xg) to concentrate the liquid at the bottom. 5. Store the suspended plasmid at -20°C. The DNA is stable for at least one year from date of shipping when stored at -20°C.
RefSeq:	NM_001100722.1 , NP_001094192.1
RefSeq Size:	2510 bp
RefSeq ORF:	1863 bp
Locus ID:	315691
Cytogenetics:	8q24
MW:	69.8 kDa