

Product datasheet for **RR204493**

Phka1 (NM_022626) Rat Tagged ORF Clone

Product data:

Product Type:	Expression Plasmids
Product Name:	Phka1 (NM_022626) Rat Tagged ORF Clone
Tag:	Myc-DDK
Symbol:	Phka1
Synonyms:	Pcyt1b
Vector:	pCMV6-Entry (PS100001)
E. coli Selection:	Kanamycin (25 ug/mL)
Cell Selection:	Neomycin
ORF Nucleotide Sequence:	>RR204493 representing NM_022626 Red=Cloning site Blue=ORF Green=Tags(s)

TTTTGTAATACGACTCACTATAGGGCGCCGGAATTCGTCGACTGGATCCGGTACCGAGGAGATCTGCC
GCC**CGGATCGCC**

ATGAGGAGCCGGAGTAACTCGGGGTCCGCTGGACGGCTATGCTCGGCTGGTGCATCAGACCATCCTGT
GCCATCAGAATCCAGTGACAGGCTTGTCTCCGGCCAGCTATGATGAGAAAGATGCCTGGGTCGAGATAA
TGTGTATAGCATCTGGCTGTGTGGGTTTAGGCTGGCATATCGAAAGAATGCAGACCGTGATGAGGAC
AAGGCAAAGGCCTATGAACTGGAGCAGAGTGTAGTGAAGTTAATGAGGGACTGCTGCACATGCATGATCA
GACAGGTGGATAAAGTAGAGTCTTTCAAGTACAGTCAAGTACTAAAGATAGCCTTCACGCCAAGTACAA
CACAAAACCTTGTGCCACGGTAGTGGGTGATGACCAGTGGGGACACCTGCAGTTGGATGCTACTTCTGTG
TACCTGCTCTTCTAGCACAAATGACTGCCTCAGGACTCCATATCATCCACAGCCTAGACGAAGTGAATT
TTATACAGAACCTTGTGTTTTACATTGAAGCCCATATAAAACTGCTGACTTTGGGATATGGGAACGCGG
AGATAAGACAAACCAAGGCATCTCAGAATTGAATGCAAGTTCAGTTGGAATGGCCAAGGCAGCCCTGGAA
GCACTAGATGAATTAGACTTGTGGTGTGAAAGGTGGCCGCAATCAGTTATCCATGCTCTGGTGACG
AAGTACAACACTGCCAGTCGATCCTGAATTCACTACTGCCAGGGCTTCAACATCGAAAGAAGTTGATGC
CAGTCTGCTGTCAGTGGTCTTTCCAGCCTTTGCTGTAGAGGACAGTCAATTTGGTGGAGATCACCAAA
CAGGAGATCATCACAAAACCTCAGGGTCTGTTATGGTTGCTGTCGTTTTCTGCGTGATGGATATAAACTC
CTAAAGAGGATCCTAATCGCCTATACTATGAACCAGCTGAGCTGAAGCTATTTGAAAACATAGAGTGTGA
ATGGCCACTGTTCTGGACATACTTTATCCTTGATGGGATCTTCAGTGGCAACACAGAACAGGTTCAAGAA
TATAGAGAGGCTCTTGATGCAGTCTCATCAAGGGCAAAAATGGAGTCCCACTACTTCCAGAGCTGTACA
GTGTTCTCCTGACAGGGTTGATGAAGAATATCAAAATCCTCACACCGTGGATCGAGTCCCTATGGGAAA
ATTGCCTCACATGTGGGTGAGTCCCTATATATTTAGGAACTTGATGGCGGAGGGATTTTAGCTCCT
GGAGAAATGATCCCCTGAATCGTAGGTTTTCCACTGTCCAAAGCCAGACGTAGTGGTTCAAGTCTCCA
TTCTGGCTGAAACAGAAGAAATCAAGGCCATTTTGAAGGACAAAGGAATTGATGTGGAGACCATTGCTGA
AGTGTACCCCATAAAGGTACAGCCAGCTCGTATTCTCAGCCACATTTATTCCAGTCTAGGATGCAACAGT
AGAATGAAACTCAGTGGACGACCCTACAGGCTCATGGGTGACTTGGAACGTCAAAAACCTTATGACATTC



GCAAAACTATCTTTACTTTCACCTCCACAGTTTATAGACCAGCAGCAGTTCTACTTGGCTCTGGACAACCA
 GATGATAGTCGAAATGCTCCGGACAGATCTCTCCTACCTCTGCAGCCGGTGGAGGATGACAGGCCAGCCC
 ACCATCACTTTCCCATCTCACACACCATGCTGGATGAAGATGGAGCCAGCTTGAATTCAGTATCCTGG
 CAGCACTCCGGAAAAATGCAGGATGGTTATTTTGGTGGGGCCAGGATCCAAACAGGTAAAGCTGTACAGCGAA
 TTTGACAACATCTTGCTGCACACACTTAAGCTTCATGGACCCTGGACCCGAGGGTAAGCTGTACAGCGAA
 GATTATGATGAAGACTATGATGATGAGCTGGACTCTGGCAACTGGATGGATAGCTATGACTCAACACGTA
 ATGCTCGCTGTGGTGATGAAGTTGCCCGTTATTTAGACCACCTTTGGCACACACTGGTCCCCATCCTAA
 ACTAACTCCACCTCACGGAAGGGAGGGCTAGATCGGTTCCGAGCTGCTGTGCAAACAACCTTGCACCTTA
 ATGTCCTTGGTGGCCAAGGCCAAGGAGTGCATATACAGAATGTTACATGTATCTTCTACAAAGTTAT
 TTCAGCCTTCTCGCCCTTCACTCAACTTACTTGACTCACCTGAATCTCCACAAGATAGCCAGGTTCTTTC
 TGTTCTGTGAGAAGTCCATCTTCTAGGGACCAGTCTGGGGAAGTGGACTTCCAGTCATTGGTTTACACG
 TTGAAGGAGACCTCAAGCTTACAGGAGCAAGCTGATATACTCTACATGCTATATAACAATGAAAGGACCTG
 ACTGGAACACTGAATTGTACGAAGAAGGAGGCAGTACTGTGAGAGAGCTTCTTAGTGAATATATGTCAA
 AGTCGGTAAAATTCGGCACTGGGTCTGATCCGATACATCTCTGGGATCTTACGGAAGAAGTGGAGGCA
 CTTGATGAGGCCCTGCACAGACCTTCTGTCTACCAGAAACACCTGACAGTAGGGCTTCTCCAGAACCTC
 GAGAGAAGACCATCTCTGCGCCTTACCGTACGAGGCACTCACTAAGCTGATAGTGAAGCCAGCGAAGG
 AGACATGAACATCTCCACCCTGCACAGGAAATATGGTCTATCTTGCCATGTATATGAGAACTAGCCT
 GGCTTTTTTGAGAAATGTTCCGACTTCGAATTTGGTTTGTATACAAAGTTATGGCAACAGAACTGGCCC
 ACTCTCTGCGATGTTTCAAGCTGAAGAAGCCACAGAGGGCCTGATGAATCTCAGTCTTCCAGCCATGAAGAA
 TCTCTGCATCACATCCTCAGCGGCAAAGAGTTTGGAGTGAACGAAGCGTTTCGTCCTCACTGATTCAAAT
 GTGAGTCTGCTATTTCCATCCATGAGATCGGTGCTGTCGGAGCAACAAAAACAGAACGAAGTGAATCA
 TGCAGTAAAAAAGTGAAGTCAAGCAGGTGGAATCCGTAGGCTGTCTGTCTCACCCGAGAGTCAGACTAG
 TGGTGGTCACTCCCTCAAGTATAGATTTGATGTCACCCGACCTTTCTGTCCCCTGCAGCCTGTATTTCTGCG
 AGCAGTGGGTCTTTCTACTGTATGTGAGCCACAGACATCTAAAGATAGTCGTCGTAAGGCCAATGGCAAC
 GCAGGAGAAGACTAGATGGAGCACTAAATAGAGTACCAATTGGATTTTATCAAAAAGTGTGAAAAATTTT
 GCAGAAATGTCACGGGCTTTCTGTGGAAGGTTTGTCTTCCCTCTTCAAGCACTAGGGAGATGACCCCA
 GGCAGATTAATTTCTGTCCACGTGGAGTCCGTCTGAACCGTGTGCCTCAGCCAGAGTACCGTCAGC
 TTCTGGTTGAAGCCATCCTCGTTCTCACCATGCTGGCAGATATTGAAATCCATAGCATTGGGAGCATCAT
 TGCTGTGAAAAAATAGTTCATATTGCCAATGACTTGTCTTCCCTCAGGAACAGAAAACCTCGGCGCAGAT
 GATATCATGTTGGCAAAGGATCCTGCATCTGGCATCTGTACTTCTGTATGACAGTGCACCCAGTGGCA
 GATTTGGCACCATGACCTACCTCTCAAGGCAGCTGCCACCTACGTGCAGGAGTTTCTGCCACACAGCCT
 CTGTGCCATGCAG

ACGCGTACGCGGCCGCTCGAGCAGAACTCATCTCAGAAGAGGATCTGGCAGCAAATGATATCCTGGATT
 ACAAGGATGACGACGATAAGGTTTAA

Protein Sequence: >RR204493 representing NM_022626
 Red=Cloning site Green=Tags(s)

MRSRSNSGVRLDGYARLVHQTILCHQNPVTGLLPASYDEKDAWVRDNVYSILAVWGLGLAYRKNADRDED
 KAKAYELEQSVVKLMRGLLHCMIRQVDKVESFKYSQSTKDSLHAKYNTKTCATVVGDDQWGHLLQDQATSV
 YLLFLAQMNTASGLHIIHSLDEVNFIQNLVFIYIEAAYKTADFGIWERGDKTNQGISLNASSVGMKAAL
 ALDELDFGVKGGPQSVIHVLADEVQHCQSILNSLLPRASTSKVEDASLLSVVSFPFAVEDSHLVEITK
 QEIIITKLQGRYGCCRFLRDGYKTPKEDPNRLYYEPAELKLFENIECEWPLFWTYFILDGIFSGNTEQVQE
 YREALDAVLIKGKNGVPLLPELYSVPDRVDEEQNPHTVDRVPMGKLPHMWQSLYILGNLMAEGFLAP
 GEIDPLNRRFSTVPKPDVVVQVSI LAETEEIKAILKDKGIDVETIAEVYPIRVQPARILSHIYSSLGCNS
 RMKLSGRPYRLMGVLGTSKLYDIRKTIFFTPQFIDQQQFYALDNQMI VEMLRTDLSYLCRWRMTGQP
 TITFPISHTMLDEDGASLNSSILAALRKMQDGYFGGARIQTGKLEFLTTSCTHL SFMDPGPEGKLYSE
 DYDEDYDDELDSGNWMSYDSTRNARCDEVARYLDHLLAHTGPHPKLTPTSRKGGDRFRAAVQTTCDL
 MSLVAKAKELHIQNVHMYLPTKLFQPSRPSLNLLDSPESPQDSQVPSVRVEVHLPRDQSGEVDVFQSLVSQ
 LKETSSLQEADILYMLYTMKGPDWNTELYEEGGSTVRELLSELVYKVG EIRHWGLIRYISGILRKKVEA
 LDEACTDLLSYQKHLTVGLPPEPREKTI SAPLPYEALTKLIDEASEGDMNISTLTQEIMVYLAMYRTQP
 GLFAEMFRLRIGLIIQVMATELAHSLRCSAEEATEGLMNLSPSAMKNLLHHILSGKEFGVERSVRPTDSN
 VSPAISIHEIGAVGATKERTERTGIMQLKSEIKQVEFRRLSVSPESQTSGGHPSSIDLMSPTFLSPAACISA
 SSGSFPTVCEPQTSKDSRQGWQRRRLDGALNRVPIGFYQKVKWILQKCHGLSVEGFVLPSSSTREMP
 GEIKFSVHVESVLNRVPQPEYRQLLVEAILVLTMLADIEIHSIGSIIAVEKIVHIANDLFLQEQTGLGAD
 DIMLAKDPASGICTLLYDSAPSGRFGTMTYLSKAAATYVQEF LPHSLCAMQ

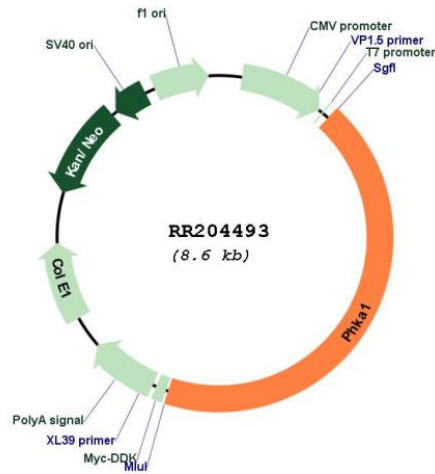
TRTRPLEQKLISEEDLAANDILDYKDDDDKV

Restriction Sites:

Sgfl-MluI

Cloning Scheme:



Plasmid Map:


ACCN: NM_022626

ORF Size: 3723 bp

OTI Disclaimer: The molecular sequence of this clone aligns with the gene accession number as a point of reference only. However, individual transcript sequences of the same gene can differ through naturally occurring variations (e.g. polymorphisms), each with its own valid existence. This clone is substantially in agreement with the reference, but a complete review of all prevailing variants is recommended prior to use. [More info](#)

OTI Annotation: This clone was engineered to express the complete ORF with an expression tag. Expression varies depending on the nature of the gene.

Components: The ORF clone is ion-exchange column purified and shipped in a 2D barcoded Matrix tube containing 10ug of transfection-ready, dried plasmid DNA (reconstitute with 100 ul of water).

Reconstitution Method:

1. Centrifuge at 5,000xg for 5min.
2. Carefully open the tube and add 100ul of sterile water to dissolve the DNA.
3. Close the tube and incubate for 10 minutes at room temperature.
4. Briefly vortex the tube and then do a quick spin (less than 5000xg) to concentrate the liquid at the bottom.
5. Store the suspended plasmid at -20°C. The DNA is stable for at least one year from date of shipping when stored at -20°C.

RefSeq: [NM_022626.2](#), [NP_072148.2](#)

RefSeq Size: 4359 bp

RefSeq ORF: 3726 bp

Locus ID: 64561

Cytogenetics: Xq22

MW: 139 kDa

Gene Summary: catalyzes phosphatidylcholine (PC) synthesis; mediates maintenance of cell membrane PC homeostasis [RGD, Feb 2006]