

Product datasheet for **RR204482**

Aqp11 (NM_173105) Rat Tagged ORF Clone

Product data:

Product Type:	Expression Plasmids
Product Name:	Aqp11 (NM_173105) Rat Tagged ORF Clone
Tag:	Myc-DDK
Symbol:	Aqp11
Vector:	pCMV6-Entry (PS100001)
E. coli Selection:	Kanamycin (25 ug/mL)
Cell Selection:	Neomycin
ORF Nucleotide Sequence:	>RR204482 representing NM_173105 Red=Cloning site Blue=ORF Green=Tags(s)

TTTTGTAATACGACTCACTATAGGGCGGCCGGAATTCGTCGACTGGATCCGGTACCGAGGAGATCTGCC
GCC**CGATCGC**C

ATGTCCGCGCTACTGGGGCTCCCGCCGAGGTGCAGGACACCTGCATCTCGTGGGACTAATGCTGTTGG
TCGTGCTGTTTCATGGGGCTGGCCCGGTGATCGCCCGCAACAGCTGCACAGGCCCATGGTCCACGCCTT
CGTCCTGGAGTTTCTAGCTACCTCCAGCTCTGCTACTGCACCCATGAGCTCCAAGTCTGAGCGAGCAG
GACTCGGGGCACCCACCTGGACGCTGACTGATCTACTTCTTTTCTTGGTGCATGGCCTGACCTGG
TGGGCACAGCTAGCAACCCGTGCGGCGTGATGATGCAGATGATTCTGGGGGCATGTCCCGGAGATGGG
TGCGGTGAGGTTGATGGCTCAGCTGTTAGTGCCTATGCAGCAGGACTGCATAAGTGCCTGTGGAGC
CTGAGCCTGACCAAGTACCATTTTCGACAAGAGGATTTTAGCTTGCAGGAATCCCATCAACACCGACATAT
CCAAAGCGATCATCATAGAAGCCATCTGCTCCTTTATTTTCCACAGCGCTCTACTGCACTTCCAGGAGGT
CCGAACCAAGCTTCGCATCCACGTGCTGGCTGCACTCATACCTTTTTGGCCTATGCAGGAGGGAGCCTC
ACAGGAGCGCTGTTAAACCAGCACTGGCACTTTCGCTGCACTTCCCGTGCTTTGACGAATCGTTCTATA
AGTTTTTCGTAGTATATTGGGTTGCTCCTTCTCTAGGCGTACTGCTGATGATCCTCATGTTTCAGCTTCTT
CCTCCGTGGCTGCACAACAACCAACTGAGTAACAAGAAGGAA

ACGCGTACGCGGCCGCTCGAGCAGAAACTCATCTCAGAAGAGGATCTGGCAGCAAATGATATCCTGGATT
ACAAGGATGACGACGATAAGGTTTAA



[View online »](#)

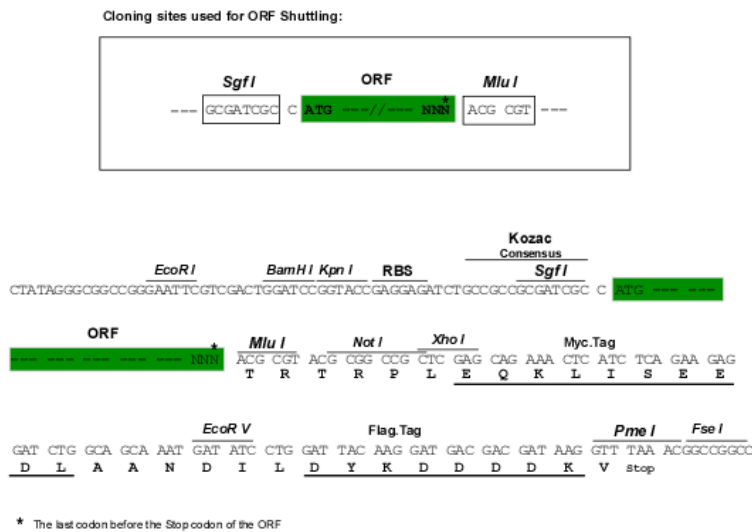
Protein Sequence: >RR204482 representing NM_173105
Red=Cloning site Green=Tags(s)

MSALLGLPPEVQDTCISLGLMLLVFLFMGLARVIARQQLHRPMVHAFVLEFLATFQLCYCTHELQLLSEQ
 DSGHPTWTLTLIYFFSLVHGLTLVGTASNPCGVMMQMIILGGMSPENGAVRLMAQLVSALCSRYCISALWS
 LSLTKYHFDKRILACRNPINTDISKAIIEAICSFIFHSALLHFQEVRTKLRIHVLAALITFLAYAGGSL
 TGALFNPALALSLHFPCFDESFYKFFVVYVWAPSLGVLLMILMF SFFLPWLHNNQLSNKKE

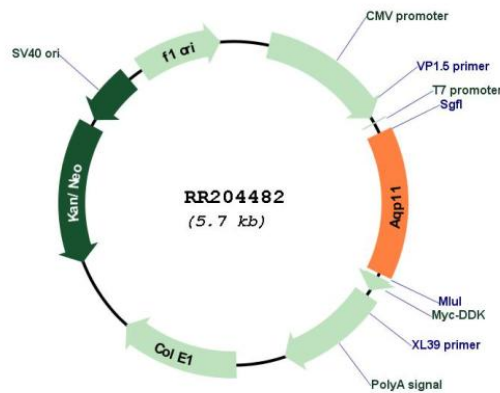
TRTRPLEQKLISEEDLAANDILDYKDDDDKV

Restriction Sites: SgfI-MluI

Cloning Scheme:



Plasmid Map:



ACCN: NM_173105

ORF Size: 813 bp

OTI Disclaimer: Due to the inherent nature of this plasmid, standard methods to replicate additional amounts of DNA in E. coli are highly likely to result in mutations and/or rearrangements. Therefore, OriGene does not guarantee the capability to replicate this plasmid DNA. Additional amounts of DNA can be purchased from OriGene with batch-specific, full-sequence verification at a reduced cost. Please contact our customer care team at custsupport@origene.com or by calling 301.340.3188 option 3 for pricing and delivery.

The molecular sequence of this clone aligns with the gene accession number as a point of reference only. However, individual transcript sequences of the same gene can differ through naturally occurring variations (e.g. polymorphisms), each with its own valid existence. This clone is substantially in agreement with the reference, but a complete review of all prevailing variants is recommended prior to use. [More info](#)

OTI Annotation: This clone was engineered to express the complete ORF with an expression tag. Expression varies depending on the nature of the gene.

Components: The ORF clone is ion-exchange column purified and shipped in a 2D barcoded Matrix tube containing 10ug of transfection-ready, dried plasmid DNA (reconstitute with 100 ul of water).

Reconstitution Method:

1. Centrifuge at 5,000xg for 5min.
2. Carefully open the tube and add 100ul of sterile water to dissolve the DNA.
3. Close the tube and incubate for 10 minutes at room temperature.
4. Briefly vortex the tube and then do a quick spin (less than 5000xg) to concentrate the liquid at the bottom.
5. Store the suspended plasmid at -20°C. The DNA is stable for at least one year from date of shipping when stored at -20°C.

RefSeq: [NM_173105.1](#), [NP_775128.1](#)

RefSeq Size: 1299 bp

RefSeq ORF: 816 bp

Locus ID: 286758

UniProt ID: [Q8CHM1](#)

Cytogenetics: 1q32

MW: 30.4 kDa

Gene Summary: member of the major intrinsic protein family [RGD, Feb 2006]