

Product datasheet for **RR204465**

Tlr3 (NM_198791) Rat Tagged ORF Clone

Product data:

| | |
|--------------------|---------------------------------------|
| Product Type: | Expression Plasmids |
| Product Name: | Tlr3 (NM_198791) Rat Tagged ORF Clone |
| Tag: | Myc-DDK |
| Symbol: | Tlr3 |
| Vector: | pCMV6-Entry (PS100001) |
| E. coli Selection: | Kanamycin (25 ug/mL) |
| Cell Selection: | Neomycin |



[View online »](#)

ORF Nucleotide Sequence:

>RR204465 representing NM_198791
 Red=Cloning site Blue=ORF Green=Tags(s)

TTTTGTAATACGACTCACTATAGGGCGGCCGGAATTCGTCGACTGGATCCGGTACCGAGGAGATCTGCC
 GCC**CGCATCGCC**

ATGAAAGGGCGTTTCATCTTATCTAATACTCCTTTGGGGGACTTTTGTCCCTATGGATTCTTGTGGTGT
 CTTCACAAACCAATGCACTGTGAGATACAACGTAGCTGACTGCAGCCATTTGAAGCTGACACACATAACC
 TGATGACCTTCCCTCTAATAACAGTGTGAATCTTACTCACAATCAACTCAGAGGATTACCACCTGCC
 AATTTTACGAGATACAGCCAACCTGCTCTCTGGATGCAGGATTCAACTCCATTTCAAACTGGAGCCAG
 AACTGTGCCAAATTCCTCTTTGTTGAAGGTATTGAACCTGCAACACAATGAGCTGTCTCAGATTCTGA
 TCAAACCTTCGCCTTCTGCACGAACCTGACAGAGCTCCATCTAATGTCCAACCAATACGCAAAATTA
 AGCAACCCCTTTCAAAAACGAGAAGTCTAATCAAAGTATTGTCTCATAATGGCTTATCATCTACAA
 AGTTGGGAACCTGGGTCCAACCTGGAGAACCTCCAAGAGCTGCTCTTAGCTAAAAATAAAATTTTGCCT
 ACGAAATGAAGAACTTGATTTTCTGGCAATTCTCCTTACAAAATTTGGACTTGTCAATCCACTT
 AAAGAGTTTTCTCCAGGGTGTTCATGCGATTGGCAAGTTATTGTCCTCCTTTGAACCAATGCCAAC
 TGAACCTCGACCTCACAGAGAAGCTTTGTTGGGAACCTTCAAACACAAGCATCCAGAATCTCTCTG
 TAACAACCAAGCTGTAGCAACCAAGCAACAGCACTTTCTCCGGGCTGAAGCAGACCAACCTCACCTCGCT
 GATCTTTCTACAACAGCCTCCGCGACGTCGGTAACGATGCCTTCTCTGGCTCCCGCACCTGAAGTATC
 TGTCCCTCGAGTACAATAATACACGCTTTGACCCCTCACTCTTTTCTGGACTTTCCAACCTGAGGTA
 CCTGAGTTTGAAGCGAGCATTACTAAGCAAAGTGTGCACTTGCTTCTCACCCCAACATTGACGATTTT
 TCCTTTTCAGTGGCTAAAATGTTTGAACATCTCAACATGGACGATAATACTATACCGGGTATAAAAAGCA
 ATACTTTCACAGGATTGGTGAAGTCTGAAGTAACTAAGTCTTTCCAAAACCTTTACGGGTTGCAACGCT
 AACAAACGAAACGTTTGTGCTCTTACTATTCTCCTTTGCTCACTCTCAATTTAACGAAGAATCACATC
 TCGAAGATAGCAAGTGGTACTTTCTCTGGTTGGGTCAACTCAGGATACTTGATCTTGGCCTTAATGAAA
 TTGAGCAAGAACTCACCGCCAGGAATGGAGAGGTCTGGGAAATATATTTGAGATCTACCTGTCTATAA
 TAAATACCTCCAACCTGACTAGCAAGTCTTCACTTTGGTCCCAGCCTTCAACGACTGATGCTCAGGAGG
 GTGGCCCTTAAAAGTGTGGATATCTCCCTTCGCCTTCCGTCCTTTTAACTGACTATTCTGGACT
 TAAGCAACAACAACATTGCCAACCTGACGAGGACTTGTGGAGGGTCTGAGAATCTAGAAATCTGGA
 TTTTCAGCACAACAACCTAGCAAGACTCTGAAACACGCAAAACCCAGGTGGTCCCGTTAATTTCTGAAG
 GGTCTGTCTCACCTCCACATCTGAACTTGAATCCAATGGCTTAGATGAAATCCCGGTCAAGGTGTTCA
 AGAACTTATTGCAACTCAAGAGCATCAATCTAGGACTGAATAATTTAAACAGCTTCTACCATCCATTTT
 TGATGACCAGACATCTTAAGGTCACTGAACCTTCAAGAAGCCTCATCACATCAGTTGAGAAGAGTGT
 TTCGGGCCAGCTTTTCAACCTGAACAGCTTAGATATGAGCTTCAATCCGTTGACTGTACATGTGAAA
 GCATTGCCTGGTTTGTACCTGGCTTAAACCAGACCCACACTAATATCCCTGAACTATCCACTCATTACCT
 CTGCAATACCCCCAGCGTTACCACGGCCTCCAGTGAAGCTTTTGGACACATCATCCTGTAAGACAGT
 GCCCCTTCCAACCTCCTATTCAATTAACACCAGTACGCTCCTGACTTTTATACTTGGGTTACTGCTCA
 TTCCTTTCGAGGGTTGGAGGATATCTTTTACTGGAATGTTTCAGTGCATCGAATTTTGGTTTCAAGGA
 AATAGATGCACAGGGTGAGCAGTTGGAATACACGGCATAACATTCATGCCAGAAAGACAGAGACTGG
 GTCTGGGAGCATTCTCCCAATGGAAGAACAAGACCAATCTCTCAAATTTTGCCTAGAAGAAAGGGACT
 TCGAAGCAGGGTCTTGGACTTGAAGCAATTGTTAACAGCATCAAAAGAAGCAGAAAAATCATCTTTGT
 TATAACGCATCACCTACTGAAAGACCGCTGTGCAGAAGATTCAAGGTGCATCACGCGGTTGAGCAAGCT
 ATCGAGCAAAATCTGGATTCAATATACTGATTTTTCTCCAGAATATTCCAGATTACAACTAAACCATG
 CACTCTGCTTGCAGAGGAATGTTAAATCTCATTGCATCTTGAAGTGGCAATTCAAAAGAACGGAT
 AAACGCCTTTCATATAAAGTCAAGTAGCACTGGGTCTCGGAATTCAGCACAT

ACGCGTACGCGGCCGCTCGAGCAGAACTCATCTCAGAAGAGGATCTGGCAGCAATGATATCCTGGATT
 ACAAGGATGACGACGATAAGGTTTAA

Protein Sequence: >RR204465 representing NM_198791
Red=Cloning site Green=Tags(s)

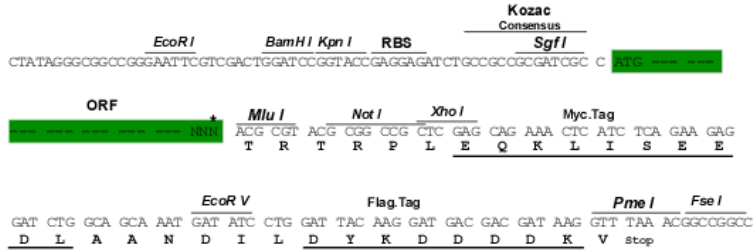
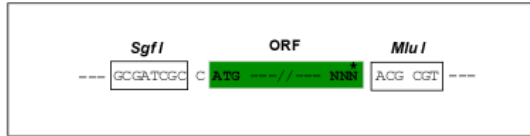
MKGRSSYLIIYFSGGLLSLWILVVSSTNQCTVRYNVADCSHLKLT HIPDDLPSNITVLNLTHNQLRGLPPA
NFTRYSQLALLDAGFNSISKLEPELCQILPLLKVLNLQHNELSQISDQTFACFNLT TELHLMNSNSIRKIK
SNPFKNQKSLIKLDL SHNGLSSTKLGTVVQLENLQELLAKNKIFALRNEELDFLGNSSLQKLDLSSNPL
KEFSPGCFHAIGKLFVLLLNNANLNDL TEKLCWEL SNTSIQNL SLANNQLLATSNTSF SGLKQTNLTSL
DLSYNSLRDVGNDAF SWLPHLKYL SLEYNNIQRLTPHSFRGLSNLRYLSLKRAFTKQSVLASHPNIDDF
SFQWLKCLEHLMDDNTIPGIKSNTFTGLVSLKYL SLSKFTTGLQTLTNETFVSLTHSPLLTLNLTKNHI
SKIASGTF SWLGQLRILDGLNEIEQELTGQEWRLGNIFEIYLSYNKYQLT SKSFTLVPSLQRLMLRR
VALKSDVISPSPFRPLYNL TILDLSNNIANLNEDLLEGLLENLEILDFQHNNLARLWKHANPGGPVNF LK
GLSHLHILNLESNGLDEIPVKVFNLFELKSINLGLNNLNTLLPSIFDDQTSLSLNLQKNLITSVEKSV
FGPAFHNLNSLDMFNPFDCTCESIAWFVTWLNQTHTNIPELSTHYLCNTPQRYHGLPVKLFDTSSCKDS
APFQLLF IINTSTLLTFILAVLLIHFEGWRI SFYWNVSVHRILGFKEIDAQGEQFEYTAYIIHAQKDRDW
VWEHFSPMEEQDQSLKFCLEERDFEAGV LGLEAIVNSIKRSRKIIFVITHHLLKDPLCRRFKVHHAVQQA
IEQNLDSEIILIFLQNIIPDYKLNHALCLRRGMFKSHCILNWPIQKERINAFHHKLQVALGSRNSAH

TRTRPLEQKLISEEDLAANDILDYKDDDDKV

Restriction Sites: Sgfl-MluI

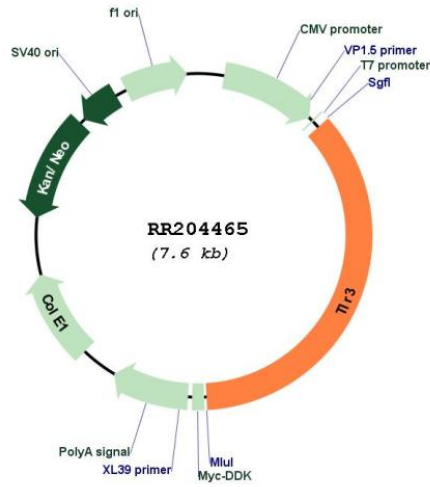
Cloning Scheme:

Cloning sites used for ORF Shuttling:



* The last codon before the Stop codon of the ORF

Plasmid Map:



| | |
|-------------------------------|---|
| ACCN: | NM_198791 |
| ORF Size: | 2715 bp |
| OTI Disclaimer: | The molecular sequence of this clone aligns with the gene accession number as a point of reference only. However, individual transcript sequences of the same gene can differ through naturally occurring variations (e.g. polymorphisms), each with its own valid existence. This clone is substantially in agreement with the reference, but a complete review of all prevailing variants is recommended prior to use. More info |
| OTI Annotation: | This clone was engineered to express the complete ORF with an expression tag. Expression varies depending on the nature of the gene. |
| Components: | The ORF clone is ion-exchange column purified and shipped in a 2D barcoded Matrix tube containing 10ug of transfection-ready, dried plasmid DNA (reconstitute with 100 ul of water). |
| Reconstitution Method: | <ol style="list-style-type: none">1. Centrifuge at 5,000xg for 5min.2. Carefully open the tube and add 100ul of sterile water to dissolve the DNA.3. Close the tube and incubate for 10 minutes at room temperature.4. Briefly vortex the tube and then do a quick spin (less than 5000xg) to concentrate the liquid at the bottom.5. Store the suspended plasmid at -20°C. The DNA is stable for at least one year from date of shipping when stored at -20°C. |
| RefSeq: | NM_198791.1 , NP_942086.1 |
| RefSeq Size: | 3398 bp |
| RefSeq ORF: | 2718 bp |
| Locus ID: | 364594 |
| Cytogenetics: | 16q11 |
| MW: | 103.2 kDa |
| Gene Summary: | human homolog induces activation of NF-kappaB; mouse homolog plays a role in the production of inflammatory cytokines [RGD, Feb 2006] |