

## Product datasheet for **RR204407**

### Hexa (NM\_001004443) Rat Tagged ORF Clone

#### Product data:

|                    |  |
|--------------------|--|
| Product Type:      | Expression Plasmids                      |
| Product Name:      | Hexa (NM_001004443) Rat Tagged ORF Clone |
| Tag:               | Myc-DDK                                  |
| Symbol:            | Hexa                                     |
| Synonyms:          | MGC95289                                 |
| Vector:            | pCMV6-Entry (PS100001)                   |
| E. coli Selection: | Kanamycin (25 ug/mL)                     |
| Cell Selection:    | Neomycin                                 |



[View online »](#)

**ORF Nucleotide Sequence:**

>RR204407 representing NM\_001004443  
 Red=Cloning site Blue=ORF Green=Tags(s)

TTTTGTAATACGACTCACTATAGGGCGGCCGGAATTCGTCGACTGGATCCGGTACCGAGGAGATCTGCC  
 GCC**CGATCGCC**

ATGGCCGGCTGCAGGCTCTGGTTCGCTGCTGCTGGCGCGCGTGGCTTGCTGGCCACGGCGCTGT  
 GGCCCTGGCCCCAGTACATCCAAACCTCCACCGCGCTACACCCTGTACCCCAACACTCCAGTTCGG  
 GTACCATGCCGGTTCGGCCGCGCAGGCGGGCTGCGTTGTCTCGACGAGGCCCTTCGACGCTACCGTAGC  
 CTGCTCTTCGGTTCGGCTCTGGCCCCAGCCAGCTTCTCAAAAAACAGCAGCCGTTGGGAAGAACA  
 TTCTGATGGTCTCTGTCGTACAGCCGAATGTAATGAGTTTCTAATTTGGAGTCCGTAGAAAATTACAC  
 CCTAACCATTAATGATGACCAGTGTACTCTCTCTGAGACTGTCTGGGGCGCTCTGCGAGGTCTGGAG  
 ACTTTCAGTCAGCTTGTGGGAAGTCAGCTGAGGGCACGTTCTTATCAACAAGACAAAGATTACAGACT  
 TTCTCGATTCCCTCACCAGGGCATACTGCTGGATACATCTCGCCATTACCTGCCGTTATCTAGCATCT  
 GAACACTGGATGTCATGGCGTACAATAAATCAACGTGTTCCACTGGCACTTGGTGGAGACTCTTCC  
 TTCCCATACGAGAGCTTACCTTCCAGAGCTCACCAGAAAGGGTCTTCAACCCTGTTACCCACATCT  
 ACACAGCACAGGATGTGAAGGAGGTCATTGAATATGCAAGGCTTCGGGGTATCCGAGTGTGGCCGAAT  
 TGACACTCCTGGCCACACTTTGTCCTGGGGGCGAGGTGTCCTGGATTATTAACACCTTGCTACTCTGGG  
 TCCCGTCTCTGGCACCTATGGACCTGTGAACCCAGCCTCAACAGCACCTACGACTTCATGAGCACAT  
 TCTTCTGGAGATCAGCTCTGTCTTCCCTGACTTTTATCTCCACTGGGAGGAGATGAAGTTGACTTCAC  
 CTGCTGGAAGTCAACCCCAACATCCAGGCTTCATGAAGAAAAGGGCTTTACTGACTACAAGCAGCTG  
 GAGTCATTCTACATCCAGACGCTGCTGGACATCGTCTGATTATGACAAGGGCTATGTGGTGTGGCAGG  
 AAGTATTTGATAATAAAGTGAAGTTCGGCCAGACACAATCATAACAGGTGTGGCGGAAGAGCCGGT  
 CCAGTACATGAAGGAGATAGAGGCCATCACCAGGCTGGCTTCGGGGCCCTGCTGTCTGCTCCCTGGTAC  
 CTGAACCGGGTGAAGTATGGCCCTGACTGGAAGGAAATGTACAAAGTGGAGCCCTGGCATTTCGTGGTA  
 CACCTGCACAAAAGGCTCTGGTCAATGGAGGGGAAAGCCTGTATGTGGGAGAGTATGTGGACAGCACA  
 CCTTGTCCCAGGCTCTGGCCAGAGCAGGTGCCATTGCCGAAAGACTGTGGAGCAGTAACCTGACGACT  
 AATATGGACTTTGCCTTTAAACGTCTGTCCATTTCCGCTGTGAGCTGCTGAGGAGAGGAATCCAGGCC  
 AGCCCATCAGCGTGGCTACTGTGAGCAGGAGTTTGGCATACT

**ACGCGT**ACGCGGCCGCTCGAGCAGAACTCATCTCAGAAGAGGATCTGGCAGCAAATGATATCCTGGATT  
 ACAAGGATGACGACGATAAGGTTTAA

**Protein Sequence:**

>RR204407 representing NM\_001004443  
 Red=Cloning site Green=Tags(s)

MAGCRLWVSLLLAAALACLATALWPWPQYIQTSHRRYTLYPNNFQFRYHAGSAAQAGCVVLDEAFRRYRS  
 LLFGSGSWPRPSFSKKQQPLGKNILMVSVVTAECNEFPNLESVENYTLTINDDQCLLSSETVWALRGL  
 TFSQLVWKSAEGTFFINKTKITDFPRFPHRGILLDTSRHYLPLSSILNLDVMAYNKFVFWHLVDDSS  
 FPYESFTFPELTRKGSFNPTVHIYTAQDVKEVIEYARLRGIRVLAEFDTPGHLSWGAGVPGLLTPCYS  
 SRLSGTYGPVNPSLNSTYDFMSTFFLEISSVFPDFYHLHGGDEVDFTCWKSNNPIQAFMKKKGFTDYKQ  
 ESFYIQTLLDIVSDYDKGYVWQEVFDNKVVRPDTIIQVWREEMPVQYMKIEAITQAGFRALLSAPWY  
 LNRVKYGPDKWEMYKVEPLAFRGTPAQKALVIGGEACMWGEYVDSTNLVPRLWPRAGIAERLWSSNLT  
 NMDFAFKRLSHFRCELLRRGIQAQPI SVGYCEQEFEHT

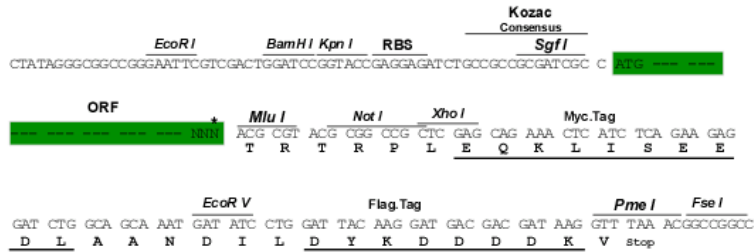
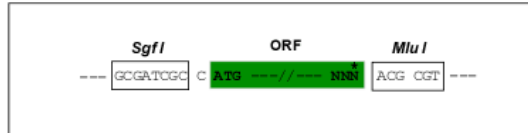
**TR**TRPLEQKLI SEEDLAANDILDYKDDDDKV

**Restriction Sites:**

Sgfl-MluI

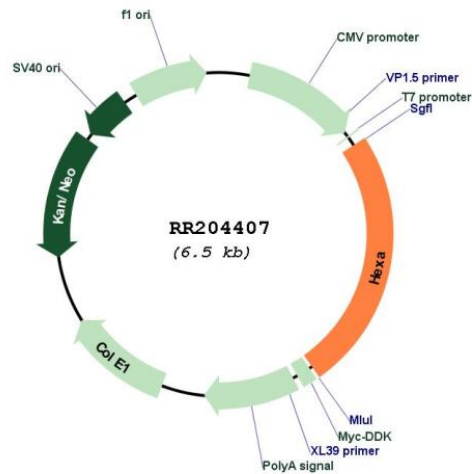
## Cloning Scheme:

Cloning sites used for ORF Shutting:



\* The last codon before the Stop codon of the ORF

## Plasmid Map:



|                               |   |
|-------------------------------|---|
| <b>ACCN:</b>                  | NM_001004443  |
| <b>ORF Size:</b>              | 1584 bp   |
| <b>OTI Disclaimer:</b>        | The molecular sequence of this clone aligns with the gene accession number as a point of reference only. However, individual transcript sequences of the same gene can differ through naturally occurring variations (e.g. polymorphisms), each with its own valid existence. This clone is substantially in agreement with the reference, but a complete review of all prevailing variants is recommended prior to use. <a href="#">More info</a>  |
| <b>OTI Annotation:</b>        | This clone was engineered to express the complete ORF with an expression tag. Expression varies depending on the nature of the gene.  |
| <b>Components:</b>            | The ORF clone is ion-exchange column purified and shipped in a 2D barcoded Matrix tube containing 10ug of transfection-ready, dried plasmid DNA (reconstitute with 100 ul of water).  |
| <b>Reconstitution Method:</b> | <ol style="list-style-type: none"><li>1. Centrifuge at 5,000xg for 5min.</li><li>2. Carefully open the tube and add 100ul of sterile water to dissolve the DNA.</li><li>3. Close the tube and incubate for 10 minutes at room temperature.</li><li>4. Briefly vortex the tube and then do a quick spin (less than 5000xg) to concentrate the liquid at the bottom.</li><li>5. Store the suspended plasmid at -20°C. The DNA is stable for at least one year from date of shipping when stored at -20°C.</li></ol> |
| <b>RefSeq:</b>                | <a href="#">NM_001004443.1</a> , <a href="#">NP_001004443.1</a>   |
| <b>RefSeq Size:</b>           | 1779 bp   |
| <b>RefSeq ORF:</b>            | 1587 bp   |
| <b>Locus ID:</b>              | 300757  |
| <b>UniProt ID:</b>            | <a href="#">Q641X3</a>  |
| <b>Cytogenetics:</b>          | 8q24  |
| <b>MW:</b>                    | 60.5 kDa  |
| <b>Gene Summary:</b>          | mouse homolog is the alpha subunit of lysosomal beta-hexosaminidase A [RGD, Feb 2006]   |