

Product datasheet for **RR204380**

Adamts12 (NM_001106420) Rat Tagged ORF Clone

Product data:

Product Type: Expression Plasmids
Product Name: Adamts12 (NM_001106420) Rat Tagged ORF Clone
Tag: Myc-DDK
Symbol: Adamts12
Vector: pCMV6-Entry (PS100001)
E. coli Selection: Kanamycin (25 ug/mL)
Cell Selection: Neomycin
ORF Nucleotide Sequence: >RR204380 representing NM_001106420
Red=Cloning site Blue=ORF Green=Tags(s)

TTTTGTAATACGACTCACTATAGGGCGGCCGGGAATTCGTCGACTGGATCCGGTACCGAGGAGATCTGCC
 GCCCGATCGCC

ATGCCATGTGCTCAGGGAACTGGATGGCAAAGCTCTCCATGGTGGCCAGCTTCTTAACCTTTGGGGCTT
 TTTGCCATGGGAGACAAGCTCAGCCCTGGCCGGTTCGCTTCCAGACCCGAAGCAAGAACATTTTATCAA
 GTCCCTGCCAGAATACCATAGTGAGTCTGCAAGTAGATGCCAGTGGCCACTTTCTGTCTATGGC
 CTGCATCACCTGTCACTGGCAGCAGGAAGAAGAGCTGCAGGTGGTTCTGGGGACCAGGTGACTACA
 GGATTTACACGAAGAAAAAACCTGTTTTCAATCTGACAGTCAACTGGGAATTTCTTTCCAATGGCTA
 TGTCTGGAGAGGAGATATGGGAACCTTTCCCATGTGAAGATGGCGGCTTCTCAGGGCAGCCCTGCCAT
 CTCAGGGGCACAGTTCTGCAACAGGGCCCCACAATCAGGATGGGGACAGCAGCTCTTAGTGCCTGCCAAG
 GACTGACTGGATTTTCCATCTACCACATGGAGACTTTTTTATTGAGCCTGTTAAAAAGCATCCACTGAC
 CGAGGAAGGTTACCAGCCTCATGTCATATACAGGAGGCAGAGCTACAGAGTTCAGAGACAAAGGAGCCC
 ACCTGCGGATTAAGGACAGCCTTGATAACTCTGTGAAGCAAGAGCTCCAGCGGGAAGTGGGAGAGGA
 AGAACTGGCCAAGCAGAAGCCTCTCCGACGCTCCATAAGCAAGGAGAGATGGGTGGAGACCCTCGTGGT
 AGCTGACACGAAGATGGTAGAGTACCATGGAAGTGAGAACGTGGAGTCTGATCCTCACTATCATGAAT
 ATGGTCACTGGGTGTTTCATAACCCAAGCATTGGAAACGCAGTGCACATTGTTGTGGTTCGGCTCATT
 TACTTGAAGAAGAGGAGCAAGGATTGAAAATAGTTCACCATGCAGAGAAGACACTGTCCAGCTTCTGCAA
 GTGGCAGAAGAGCATCAATCCCAAGAGTGACCTCAACCTGTCCATCATGATGTGGCTGTCTTATCACC
 AGAAAGGACATCTGTGCTGGTGTCAATCGCCCTTGTGAGACTCTGGGGCTGTCCAGCTGTCCAGGAATGT
 GCCAGCCTCACAGGAGCTGTAACATCAACGAAGACTCCGGTCTCCCCCTGGCTTTACCATTGCGCATGA
 ACTTGGGCACAGCTTCGGCATCCAACATGATGGGAAGGAAAAATGACTGTGAGCCCGTGGGCAGACACCCA
 TACATCATGTCCCAACAAATTCAGTATGACCCAACTCCACTGACATGGTCGAAATGCAGCAAGGAGTACA
 TCACTCGCTTCTTGGACCGAGGCAGGGGTTCTGTCTTGATGACGTCCCCAGAAAAGAAAGGCTTAAAGTC
 CAATGTCAATTGCCCTGGAGTGATTTATGATGTTCACTACCAGTCCAGCTCCAATACGGCCCAATGCT
 ACATTCTGCCAGGAAGTGGAAAATGTTTCCAGACACTGTGGTGTGCTCAGTGAAGGCTTCTGTGCTCTA
 AGCTGGATGCTGCTGCAGATGGGACAGTGTGGTGAAGAAGTGGTGTATGGCTGGAAAGTGTATCAC
 AGTGGGAAGAAACCAGAGAGCATCCCTGGAGGCTGGGGACGCTGGTACCCTGGTCACTGTTTCGAGG



[View online »](#)

ACATGTGGGGCAGGAGCTCAGAGCGCAGAGAGGCTCTGCAACAACCCAGAACCAAAGTTTGGAGGGAAAT
ACTGCACCCGGAGAAAAGAAAACGCTATCGCTTATGCAATGTCCACCCTGCCGCTCAGACACTCCAACCTT
CCGACAGATGCAGTGCAGTGAATTTGACACAGTCCCCTACAAAAACCAATTCTACCGCTGGTTCCCAGTG
TTAATCCAGCACATCCTTGTGAGCTGTACTGCAGACCCATAGATGAACAGTTTTCTGAGAGAATGCTGG
AAGCCGTCATTGATGGCACCCCGTGCTTGAAGGTGGCAACAGCAGAAAATGTCTGATTAATGGCATATG
TAAGAGGGTTGGCTGTGACTATGAGATTGATCCAATGCTACAGAGGATCGCTGTGGCGTGTGCCTTGGA
GATGGCTCGCTGCCAGACTGTGAAGAAGGTGTTTAGACAGAAGGAAGGATCCGGTTACATTGACATCG
GACTTATTCCTCAAGGTGCAAGGGATATAAGAGTGATGGAAATCAAGGCAGCCGGCAATTCCTGGCCAT
TAGGAGTGAAGATCCAGAAAAATATTACCTCAACGGAGGATTTATCATCCAGTGGAAATGAAACTATAAA
CTGGCAGGGACCGTCTTCCAGTATGACAGGAAAGGAGATCTGGAGAGACTTATGGCTCCAGGCCCAACCA
ACGAGTCAAGTGTGGCTCCAGCTACTATCCAGGTGACTAACCCCGGTATCAAGTATGAGTACACAGTCCG
GAAAGATGGCCTTGACAATGATGTGGAGAAGTTGCTGTACTTCTGGCAATTTGGCCGCTGGACAGAGTGC
AGTGTAAATGTGGAACAGGTATCCGCCCGCAGACTGCTCATTGTGTCAAGAAGGGCCATGGGATAGTGA
AAACTACCTTCTGCAACCCAGAAAACACAGCCAGCGTGAGACAGAAAAAGTGTATGAAAAGGACTGTCC
ACCCAGGTGGTGGCCGGAGAGTGGGAAGCATGTTCAATGACATGTGGCCGTACGGAGAAAAAAGAGA
ACAGTGTGTGCATCCAGACCATGGGCTCTGATGAGCAGGCTCTCCAGCTACAGACTGCCAGCACCTGC
TGAAGCCCAAGACACTGGTTTCTGCAACAGAGACATTCTGTGTCCATCAGATTGGACAGTAGGCAACTG
GAGTGAAGTGTCTGTTTCTGTGGTGGTGGAGTGCAGATTGCGAGTGTACATGTGCAAGAACCTTAAT
GAACCTGTGACAAGACAGGAAACCAACAGTCGAGCTCTGTGTGGCTCCAGCAGTGGCCATTGAGCC
GTAGAGTTCTGAAACCAATAAAGATACAGTCCCAGTGGGAAAAATCCAACAACATCAGAACATGACCA
CTTCAAGCCATCCCAGCATCTACATCCAGGCCACGCCACTGTCCACACCCACAGTGCCTGAGTCTGTG
AGCACAAGTACCCCAACATCAACAGCCTTGGCTCCACCATAACATCCCAAGAAGAACCAGATGGGATAG
GATGGCAGAATAATTCAACCCAAGTGAAGAGGACTCCACATCCCTACTTCTGTTGGAAGCATCCCA
GACTCCCCTCACTTCTGGTCTTGGAGTATGCAGCCTGATGATGAAAACGTTTCCAGTTCAGCTATAGGT
CCAACCTCAGAGAGTGACTTTTGGGCAACCACAAGTGATTCTGGCTTATCATCTAGCAATGCTATGACTT
GGCAGGTAACCTCAATTTATAGCACTGCGACCACAGAACCAGGAGTGGAGATACATAGTGGCTCAGGGGA
AGACAGTGACCAGCCTTTGAACAAGGAGGAAAACAACCTCTGTGCTATGGAACAAGATCAGAGTACCTGAA
CGTGATGCTCCCATGGAGATGGATGCAGAAAATACCACTGGACCTCCACCAACATCTTATGTGACAGAAG
AGTCTCATGGCCTCCCTCAGTACAATGATGAAAAGCTACTACCTGCCTGGTCTTCAAAAATGAGAC
ACCCAGGGATGAGGGATGATCACTGAAAATCAGGGAATATTCCACTCCCTCTGGAGGAGACCACCAG
ACAACATCCCCAGAGAAGTTAGGAAACAATGACCAACTGGCATCAGCAAATAGTACAAATCCAACCAAG
GCTCTGGCCTGTCTGACTGAGGAAGATGCCTCCACTCTGATTGAGGAGGGATTTTGGTAAATGCTTC
CAATTACAAGCATCTCATGAAGGACCACAGCCCTGCACACTGGATTGTTGGAAATGGAGTAAATGCTCT
ACCACCTGTGGGCTGGGGCCTACTGGAGGAGTGTGGAGTGTAGCACCGGGATGAACGCTGACTGCGCCG
CCATTCAGAGGCCAGACCCTGCTAAGAAGTGCCACCTGCGCCCTGTGCTGGCTGGCGAGTGGGAAACTG
GAGCAAGTGTCTCGAACTGCAGTGGAGGTTTCAAGATTCGTGAGGTTCAAGTGCATGGACGGCGTGGAC
CATCACCGGAGCCTGAGGCCATTTCACTGTCACTTCTGGCCGGCTTCTCCTCCGCTGAGTATGAGCT
GTAATCTGGAGCCTTGCAGAGAGTGGAAAGTGGAAACCTGGAGCCAGTGTCTAGGTCTGTGGAGGCGG
TGTTCCAGGAGAGAGGAGTGTGTTGCCAGGAGTCTCTGCGACTGGACAAAAAGACCTGCATCCACTGTG
CCCTGCAACAGACACCTTGTGCTCACTGGGCCACTGGGAACTGGAACTGTGCACCACTTCTGTGGTG
GTGGCTCTCAGAAGAGGACCGTTTATTGCATCCCTTCAAAAAACAGTACAACCTGAAGATCAAGACCAGT
TTTCTGTGACCACCAAGCCAGACCCCAAGAAATCCAAAACCTGCAACCAGCAAGCCTGCCGGAAGAGTGT
GATTTAACTTGCACGAAGGACAGACTTTCAACCAGCTTCTGCCAGACACTAAAAATCCATGAAGAAGTGT
CGGTGCCATCAGTACGAGTCCAGTGTCTCTCGTGTCCACAGACACAGAGCATCCACACCCAGAGGCA
AAGAAAACAGCAGATGCTCAAAAATCATGACACGCTC

ACGCGTACGCGGCCGCTCGAGCAGAAAACCTCATCTCAGAAGAGGATCTGGCAGCAAATGATATCCTGGATT
ACAAGGATGACGACGATAAGGTTTAA

Protein Sequence: >RR204380 representing NM_001106420
 Red=Cloning site Green=Tags(s)

MPCAQGNWMAKL SMVAQLLNFGAFCHGRQAQPWPVRFDPKQEHFIKSLPEYHIVSPVQVDASGHFLSYG
 LHHPVTGSRKKRAAGSGDQVYYRISHEEKNLFFNLTVNWEFLSNGYVVERRYGNLSHVKMAASSGQPCH
 LRGTVLQQGPTIRMGTAAAL SACQGLTGFHPLPHGDFEIEPVKKHPLTEEGYQPHVIYRRQSYRVPETKEP
 TCGLKDSLNDNSVKQELQREKWERKNWPSRSL SRRSISKERWVETLVVADTKMVEYHSGNSVESYILTIMN
 MVTGLFHNPSSIGNAVHIVVRLILLEEEEQGLKIVHHAETLSSFCWKQKSINPKSDLNPVHHDVAVLIT
 RKDICAGVNRPCETLGLSQLSGMCQPHRSCNINEDSGLPLAFTIAHELGHSGFIQHDGKENDCEPVRGHP
 YIMSQQIQYDPTPLTWSKCSKEYITRFLDRGRGFCLDDVPRKKGLKSNVIAPGVIYDVHHQCQLQYGPNA
 TFCQEVENVQTLWCSVKGFCRSKLDAAADGTRCGEKKWCMAGKCITVGKKPESIPGGWGRWSPWSHCSR
 TCGAGAQSAERLCNNPEPKFGGKYCTGERKRYRLCNVHPCRSDTPTFRQMQCSEFDTVPYKNQFYRWFVPV
 FNPAPCELYCRPIDEQFSERMLEAVIDGTPCFEGNSRNVCIINGICKRVGCDYEIDSNATEDRCGVCLG
 DGSACQTVKKVFRQKEGSGYIDIGLIPKGARDIRVMEIKAAGNFLAIRSEDPEKYLLNGGFIQWNGNYK
 LAGTVFQYDRKGDLERLMAPGPTNESVWLQLLFQVTNPGIKYEYTVRKDGLDNDVEKLLYFWQFGRWTEC
 SVTCGTGIRRQTAHCVKKGHGIVKTTFCNPETQPSVRQKKCYEKDCPPRWWAGWEACSMTCGPGYGEKKR
 TVLCIQTMGSDQALPATDCQHLLPKKTLVSCNRDILCPSDWTVGNWSECSVSCGGVRIIRSVTCAKLN
 EPCDKTRKPNRSLCGLQQCPFRRVLKPNKDTVP SGKNPTTSEHDHFKPIPASTSRPTPLSTPTVPESV
 STSTPTINSLGSTITSQEEPDIQWQNNSTQAEEDSHIPTSVGSTSQTPLTSWSWSMQPDDENVSSSAIG
 PTSEDFWATTSDSGLSSSNAMTWQVTPFYSTATTEPEVEIHS GSGEDSDQPLNKEENNSVLWNKIRVPE
 RDAPMEMDAEIPLGPPPTS YVTEESSWPPFSTMMKSSLPAWSFKNETPRDEGMI TEKSGNIPLPLGGDHQ
 TTSPEKLGNDQLASANSTNPTQSGSPVLTEEDASTLIEEGFLNASNYKHLMKDHPAHWIVGNWSKCS
 TTCGLGAYWRSVECSTGMNADCAAIQRDPAAKCHLRPCAGWRVGNWSKCSRNCSSGGFKIREVQCMDGVD
 HHRSLRPFHCQFLAGVPPPLS MSCNLEPCEEWKVEPWSQCSRSCGGGVQERGVFCPGGLCDWTKRPASTV
 PCNRHL CCHWATGNWELCTTSCGGGSQKRTVHCIPSENSTTEDQDQCFCDHQARPPFQNCNQACRKS
 A DLCTCKDRLSTSFQTLKSMKKCSVPSVRVQCCLSCPQTQSIHTQRQRKQMLQNHDTL

TRTRPLEQKLISEEDLAANDILDYKDDDDKV

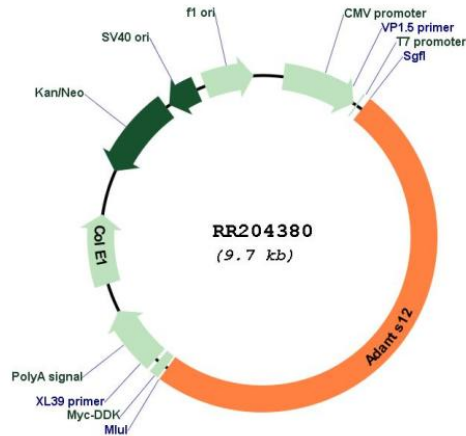
Restriction Sites:

SgfI-MluI

Cloning Scheme:



Plasmid Map:



ACCN: NM_001106420

ORF Size: 4797 bp

OTI Disclaimer: The molecular sequence of this clone aligns with the gene accession number as a point of reference only. However, individual transcript sequences of the same gene can differ through naturally occurring variations (e.g. polymorphisms), each with its own valid existence. This clone is substantially in agreement with the reference, but a complete review of all prevailing variants is recommended prior to use. [More info](#)

OTI Annotation: This clone was engineered to express the complete ORF with an expression tag. Expression varies depending on the nature of the gene.

Components: The ORF clone is ion-exchange column purified and shipped in a 2D barcoded Matrix tube containing 10ug of transfection-ready, dried plasmid DNA (reconstitute with 100 ul of water).

Reconstitution Method:

1. Centrifuge at 5,000xg for 5min.
2. Carefully open the tube and add 100ul of sterile water to dissolve the DNA.
3. Close the tube and incubate for 10 minutes at room temperature.
4. Briefly vortex the tube and then do a quick spin (less than 5000xg) to concentrate the liquid at the bottom.
5. Store the suspended plasmid at -20°C. The DNA is stable for at least one year from date of shipping when stored at -20°C.

RefSeq: [NM_001106420.3](#), [NP_001099890.2](#)
RefSeq Size: 8571 bp
RefSeq ORF: 4800 bp
Locus ID: 294809
Cytogenetics: 2q16
MW: 178.5 kDa