

## Product datasheet for **RR204339**

### Serpinc1 (NM\_001012027) Rat Tagged ORF Clone

#### Product data:

**Product Type:** Expression Plasmids  
**Product Name:** Serpinc1 (NM\_001012027) Rat Tagged ORF Clone  
**Tag:** Myc-DDK  
**Symbol:** Serpinc1  
**Vector:** pCMV6-Entry (PS100001)  
**E. coli Selection:** Kanamycin (25 ug/mL)  
**Cell Selection:** Neomycin  
**ORF Nucleotide Sequence:** >RR204339 representing NM\_001012027  
Red=Cloning site Blue=ORF Green=Tags(s)

TTTTGTAATACGACTCACTATAGGGCGGCCGGGAATTCGTCGACTGGATCCGGTACCGAGGAGATCTGCC  
 GCCCGATCGCC

ATGTATCCCCGGGAATAGGAAGTGGCGTTGCTGGAGAGAGGAAGCTTTGTCTCCTCTCTGCTACTCA  
 TTGGTGCCTTGGCTGTCTGTCTGTCATGGAACCCCTGTGGACGACATCTGCATAGCGAAGCCCCGAGA  
 CATCCCCGTGAACCCATGTGCATTTACCGCTCCCCTGCGAAGAAGGCCACGGAGGAGGATGTCCTAGAG  
 CAGAAGGTTCCGGAAGCCACCAACCGCGGGTCTGGGAAGTGTCCAAGGCCAATTCTCGATTTGCCACTA  
 ACTTCTATCAGCACCTGGCAGACTCCAAGAACGACAACGACAACATTTTCTGTCAACCCTTGAGCATCTC  
 CACGGCGTTTGTATGACCAAGCTGGTGTGTAATAACACCCTCAAGCAGCTGATGGAGGTTTTTAA  
 TTTGATACCATCTCCGAGAAGACATCCGACCAGATCCACTTCTTCTTGGCAAAGTGAAGTCCGACTCT  
 ATCGAAAAGCCAACAAGTCTTAACCTTGGTGTCAAGCAACCGCCTTTTGGAGACAAATCCCTTACCTT  
 CAATGAGAGCTATCAAGACGTTAGTGAGATTGTCTATGGAGCCAAGCTTCAGCCCCTGGACTTCAAGGAG  
 AATCCGGAGCAATCCAGAGTGACCATCAACAACGGGTAGCTAATAAGACTGAAGGCCGCATCAAGACG  
 TCATCCCCCAAGGAGCCATTGATGAGCTCACTGCCCTGGTGTGTTAACACCATTTACTTCAAGGGCCT  
 GTGGAAGTCAAAGTTCAGCCCTGAGAACAAGGAAGGAACCATTCCACAAAGTTGATGGCAGTCATGC  
 CTGGTGCCATGATGTACCAGGAAGGCAAAATCAAATACAGGCGTGTGGGAGAGGGTACCAGGTGCTAG  
 AGATGCCCTTCAAGGGGACGACATCACCATGGTGTCTATCCTGCCAAGCCTGAGAAGAGCCTGGCTAA  
 GGTGGAGCAGGAACACCCCGGAGCTGCTGCAGGAGTGGCTGGATGAGCTGTGCGAGGTCATGCTTGTG  
 GTCCACGTGCCCCGCTTCCGCATCGAGGACAGCTTCAAGGAGCAGCTGCAAGACATGGGCCCTTG  
 TTGATCTCTTCAAGCCTGAGAAGTCCCAACTCCAGGGATCATTGCTGAAGGCAGGGACGACCTCTTGT  
 CTCCGATGCATTCCAAAAGCGTTTCTTGGGTAATGAGGAAGGCAGTGAAGCAGCAGCGAGTACTTCT  
 GTCGTGATTAAGCGGTCCTGAACCCAGTAGGGTACCTTCAAGGCCAACAGGCCCTTCTGGTTC  
 TTATAAGGGAAGTCGCACTGAACACTATTATATTCATGGGAGAGTGTCTAATCCTTGTGTGAAC

ACGCGTACGCGGCCGCTCGAGCAGAAACTCATCTCAGAAGAGGATCTGGCAGCAAATGATATCCTGGATT  
 ACAAGGATGACGACGATAAGGTTTAA



[View online »](#)

Protein Sequence: >RR204339 representing NM\_001012027  
 Red=Cloning site Green=Tags(s)

M Y S P G I G S A V A G E R K L C L L S L L L I G A L G C A V C H G N P V D D I C I A K P R D I P V N P M C I Y R S P A K K A T E E D V L E  
 Q K V P E A T N R R V W E L S K A N S R F A T N F Y Q H L A D S K N D N D N I F L S P L S I S T A F A M T K L G A C N N T L K Q L M E V F K  
 F D T I S E K T S D Q I H F F F A K L N C R L Y R K A N K S S N L V S A N R L F G D K S L T F N E S Y Q D V S E I V Y G A K L Q P L D F K E  
 N P E Q S R V T I N N W A N K T E G R I K D V I P Q G A I D E L T A L V L V N T I Y F K G L W K S K F S P E N T R K E P F H K V D G Q S C  
 L V P M M Y Q E G K F K Y R R V G E G T Q V L E M P F K G D D I T M V L I L P K P E K S L A K V E Q E L T P E L L Q E W L D E L S E V M L V  
 V H V P R F R I E D S F S L K E Q L Q D M G L V D L F S P E K S Q L P G I I A E G R D D L F V S D A F H K A F L E V N E E G S E A A A S T S  
 V V I T G R S L N P S R V T F K A N R P F L V L I R E V A L N T I I F M G R V S N P C V N

TRTRPLEQKLISEEDLAANDILDYKDDDDKV

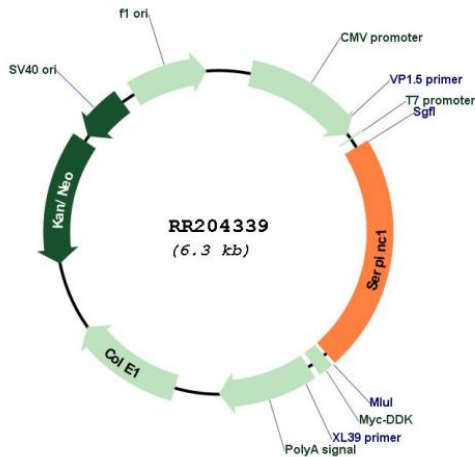
Restriction Sites:

SgfI-MluI

Cloning Scheme:



Plasmid Map:



|                               |   |
|-------------------------------|---|
| <b>ACCN:</b>                  | NM_001012027  |
| <b>ORF Size:</b>              | 1395 bp   |
| <b>OTI Disclaimer:</b>        | The molecular sequence of this clone aligns with the gene accession number as a point of reference only. However, individual transcript sequences of the same gene can differ through naturally occurring variations (e.g. polymorphisms), each with its own valid existence. This clone is substantially in agreement with the reference, but a complete review of all prevailing variants is recommended prior to use. <a href="#">More info</a>  |
| <b>OTI Annotation:</b>        | This clone was engineered to express the complete ORF with an expression tag. Expression varies depending on the nature of the gene.  |
| <b>Components:</b>            | The ORF clone is ion-exchange column purified and shipped in a 2D barcoded Matrix tube containing 10ug of transfection-ready, dried plasmid DNA (reconstitute with 100 ul of water).  |
| <b>Reconstitution Method:</b> | <ol style="list-style-type: none"><li>1. Centrifuge at 5,000xg for 5min.</li><li>2. Carefully open the tube and add 100ul of sterile water to dissolve the DNA.</li><li>3. Close the tube and incubate for 10 minutes at room temperature.</li><li>4. Briefly vortex the tube and then do a quick spin (less than 5000xg) to concentrate the liquid at the bottom.</li><li>5. Store the suspended plasmid at -20°C. The DNA is stable for at least one year from date of shipping when stored at -20°C.</li></ol> |
| <b>RefSeq:</b>                | <a href="#">NM_001012027.1</a> , <a href="#">NP_001012027.1</a>   |
| <b>RefSeq Size:</b>           | 1561 bp   |
| <b>RefSeq ORF:</b>            | 1398 bp   |
| <b>Locus ID:</b>              | 304917  |
| <b>Cytogenetics:</b>          | 13q22   |
| <b>MW:</b>                    | 52.2 kDa  |