

Product datasheet for **RR204337**

Kti12 (NM_001044288) Rat Tagged ORF Clone

Product data:

Product Type: Expression Plasmids
Product Name: Kti12 (NM_001044288) Rat Tagged ORF Clone
Tag: Myc-DDK
Symbol: Kti12
Synonyms: MGC108874
Vector: pCMV6-Entry (PS100001)
E. coli Selection: Kanamycin (25 ug/mL)
Cell Selection: Neomycin
ORF Nucleotide Sequence: >RR204337 representing NM_001044288
Red=Cloning site Blue=ORF Green=Tags(s)

TTTTGTAATACGACTCACTATAGGGCGCCGGAATTCGTCGACTGGATCCGGTACCGAGGAGATCTGCC
GCC**CGGATCGCC**

ATGCCACTGGTCGTGGTTTGC GGCTGCCGTCCAGCGCAAGAGCCGGCTACGGAAGAGTTACGTCGGG
CGCTGACCGCGAGGGACGTTCCGGTGTATGTGGTGGACGATGCTTCGGTGTGGCGCGCAGGATCCAC
TGTGTACGGCGACTCTGCGGGTGAAGGCGCTACGTGCTGCGCTGCGGGCCGCGGTAGAGCGGCGCCTG
AGCCGGCAGGACGTGGTCATCCTAGACTCCATGAACATACCAAGGGTTCCGCTACGAGTTGACTGCC
TTGCGCGAGCTGTGCGCACGCCGCTCTGCTTAGTTTACTGCATAAGGCCCGGCTGGCCAAGCCGCGGGCT
TCCGGTGCCTGGCGCCTGCGAGAGCTCGGACCCGGCTGTCAAGTGTGAGCTGGAGGCCGCGCGCCGACTAC
GGCGAGAAGACTCAGGCGGTCCGGCGCTGTAGAGCAGCGGCCATCAGCCCTTAGCAAAATGGGGGAGTCC
CGACCGCTGTCCCAAGGAAGTGGATCCAAAGGATATCCTGCCATCAAACTCCAGCTGTAAATGACTCC
GGAATCCGAGAAATCTGCAGAGCCTGCGCCATGTCCCTTCCCGAACTTTGGAGTCCTTAGCGCTG
CGCTTTGAAGCTCCCGACTCTCGGAACCGCTGGGATCGACCTTGTTCACCGTGGTGGGTTAGAAGAGC
CATTGCCCTGGCTGAGATCCGGTCTGCACTGTTGAGAATCGGGCTCCCCACCCATCAGTCTACACA
GTCCAGCCCTGGCCTCTGGCAGCTTTCTACACAGTTGGATCAGGCCACGAGCCAGGTGTTGACTGCT
GTGATGGAAGCACAGAAGAGCGTGTACCCGGAGACTTACTAACGCTTCTGGCACCCAGGACCTCC
GATTTACCGTCCCTTGACCTTGGCAGAAATGAGTCGCTCCGTCGCCAGTTTATTTCTACACTAAAAT
GCATCCCAACAATGAGAACCTGCCTCAATTGGCCAACATGTTTCTCAGTATCTGAACAGAGTTTGAC

ACGGTACGCGGCCGCTCGAGCAGAACTCATCTCAGAAGAGGATCTGGCAGCAATGATATCCTGGATT
ACAAGGATGACGACGATAAGGTTTAA



[View online »](#)

Protein Sequence:

>RR204337 representing NM_001044288

Red=Cloning site Green=Tags(s)

MPLVVVCGLPSSGKSRTEELRRALTGEGRSVYVDDASVLGAQDSTVYGDSAGEKALRAALRAAVERRL
SRQDVVILDSMNYIKGFRYELYLARAVRTPLCLVYCIRPGWPSRGLPVPGACESSDPAVSVSWRPRADY
GEKTQAVGAVEQRAISPLANGGVPTAVPKELDPKDILPSNPPAVMTPSEKSAEPAPCAFPELLESAL
RFEAPDSRNRWDRPLFTVVGLEEPLPLAEIRSALFENRAPPHQSTQSQPLASGSLHLQLDQATSQVLTA
VMEAQKSAVPGDLLTLPGTTEHLRFTRPLTLAELSRLRRQFISYTKMHPNNENLPQLANMFLQYLNQSLH

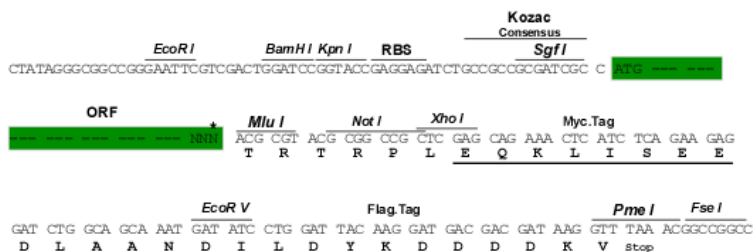
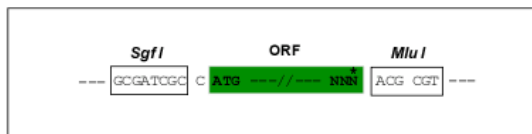
TRTRPLEQKLISEEDLAANDILDYKDDDDKV

Restriction Sites:

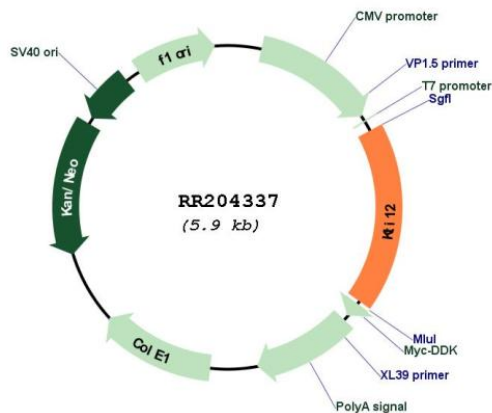
Sgfl-MluI

Cloning Scheme:

Cloning sites used for ORF Shuttling:



* The last codon before the Stop codon of the ORF

Plasmid Map:

ACCN:

NM_001044288

ORF Size:

1050 bp

OTI Disclaimer:	The molecular sequence of this clone aligns with the gene accession number as a point of reference only. However, individual transcript sequences of the same gene can differ through naturally occurring variations (e.g. polymorphisms), each with its own valid existence. This clone is substantially in agreement with the reference, but a complete review of all prevailing variants is recommended prior to use. More info
OTI Annotation:	This clone was engineered to express the complete ORF with an expression tag. Expression varies depending on the nature of the gene.
Components:	The ORF clone is ion-exchange column purified and shipped in a 2D barcoded Matrix tube containing 10ug of transfection-ready, dried plasmid DNA (reconstitute with 100 ul of water).
Reconstitution Method:	<ol style="list-style-type: none">1. Centrifuge at 5,000xg for 5min.2. Carefully open the tube and add 100ul of sterile water to dissolve the DNA.3. Close the tube and incubate for 10 minutes at room temperature.4. Briefly vortex the tube and then do a quick spin (less than 5000xg) to concentrate the liquid at the bottom.5. Store the suspended plasmid at -20°C. The DNA is stable for at least one year from date of shipping when stored at -20°C.
RefSeq:	NM_001044288.1 , NP_001037753.1
RefSeq Size:	1548 bp
RefSeq ORF:	1053 bp
Locus ID:	685656
UniProt ID:	Q5I0L7
Cytogenetics:	5q34
MW:	38.4 kDa