

Product datasheet for **RR204312**

Nkd2 (NM_001107454) Rat Tagged ORF Clone

Product data:

Product Type: Expression Plasmids
Product Name: Nkd2 (NM_001107454) Rat Tagged ORF Clone
Tag: Myc-DDK
Symbol: Nkd2
Vector: pCMV6-Entry (PS100001)
E. coli Selection: Kanamycin (25 ug/mL)
Cell Selection: Neomycin
ORF Nucleotide Sequence: >RR204312 representing NM_001107454
Red=Cloning site Blue=ORF Green=Tags(s)

TTTTGTAATACGACTCACTATAGGGCGGCCGGGAATTCGTCGACTGGATCCGGTACCGAGGAGATCTGCC
 GCCCGATCGCC

ATGGGGAAATTTTCAGTCCAAGCACGCCTGCAAGAGGAGAGAGAGTCCCGAAGGGGACAGCTTCGTGGTGT
 CGGCGTACGCGAGCGGTGCGAAAGGAGCGGAAGAGACCGACCGGGCGCGGGCAGCGGTGTGGAACATCG
 CGCACGGGACAAGCAGGAGCTGCCAATGGAGACCCTAAGGAAGGGCCTTCTGGGAAGACAAGGGTTCC
 CTAGAAGTTGTGCTGCCCTGAGAAGTCTGAGGGCCATGAGGGCCAGCTCTTCAGCGTAGATGATGGGG
 AGAAGGCAGCAAACCGAGAGGGTCCACTAAGACTCAGCAAGAAGCACTTGAACATCGACGCACTCCAGTG
 TGATGTCTCAGTGAAGAGGACAACCGTCAAGAGTGGACGTTACGCTGTATGACTTTGACAACAGTGGG
 AAAGTCACCAGAGAGGACATGTCCAGCCTGATGCACACCATCTATGAGGTCGTCGACGCCTCTGTCAATC
 ATTCCTCGGGGAGCAGCAAGACCCTCCGAGTGAAGCTAACTGTCAGCCCTGAACCCTCCAGCAAGAAGGA
 ATGGCTTCCCCCTGGCCAAGAGCGGGAGCCCACTCGTGGCAGAACAGAGAGTGAAGTCCCAGATGACCCA
 CGAGTGGCCGACAGAAGGCTGTCTGCCTATAGCAGGAAGCCCAACACAGATCCCCAGCCCTGTCTGTGC
 GAGTGCCTACTGTGTGGATGAGAACACAGAGCGAAGAAACCACTACCTAGACCTTGCTGGCATTGAGAA
 CTACACATCTAAGTTTGGTCTGGGTCAACACCTGAGCAGGCCAGGCAAGAACATCATGGCAGGGCCACA
 CACATTCACAGCAGGTCCCGGTCTCAGGAGTCGGACGCCCATGCTATACACCACCGCAGGTCTCAGGTCC
 TGGCTGAGCATATTGTGCCAGCTAATGAGCCTGCTCCTCGGGCCCTGGCTGCACAGCCCCGACTCAAGGG
 GCAGGAGAAGCAGTTCCTCAGGTCTCCCAAGGGTCCGGGAAAACCTCTTGGGGCACCAGCGGCAGCAAG
 CCAGGGAAATCGCTCAGCATTGCTGCAAGGCTGTGCCGCTGTCCAGGGTGTCCAGGGTGTCCAGGACGGCCACCACC
 TTCTCAACCCCCACCGCAGCCTCCGCCACAGCCCTATGGTCACAAGCGGTACCGGCAGAAAAGCAGAGA
 AGGCCACTCACCCTTAAGGGGCACGGCCAGCCTACCATGGTGGAGCATGAAGTGGTCCGGGACCTTCT
 CCCATGCTGGGGCCTGAGGGCTACGTGGTGCCTATGATCCAGAGGCATGAACACCACCATCACCATGAAC
 ACCACCACCATCACCACCACCACCACTTCCACCCAAACGCCTCC

ACGCGTACGCGGCCGCTCGAGCAGAAACTCATCTCAGAAGAGGATCTGGCAGCAAATGATATCCTGGATT
 ACAAGGATGACGACGATAAGGTTTAA



[View online »](#)

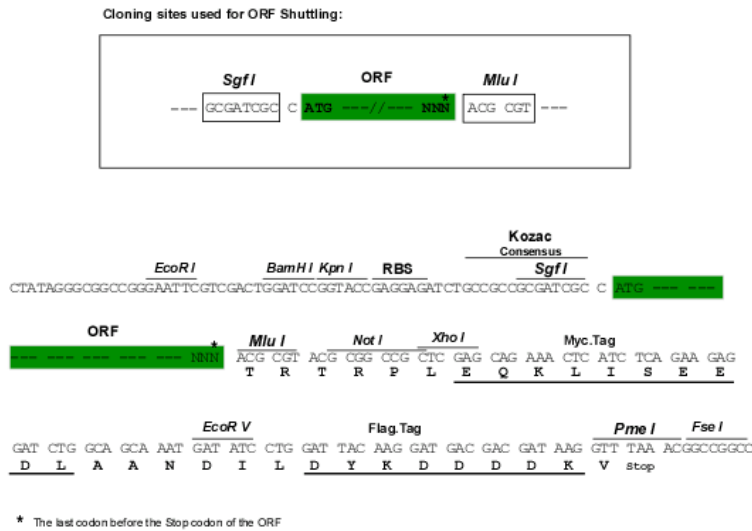
Protein Sequence: >RR204312 representing NM_001107454
Red=Cloning site Green=Tags(s)

MGKFQSKHACKRRESPEGDSFVVSAYASGRKGAETDRRAGSGVEHRARDKQELPNGDPKEGPFWEDKGS
 LEVVLPEKSEGHEGQLFSVDDGEKAANREGPLRLSKKHLNIDALQCDVSVEEDNRQEWFTLYDFDMSG
 KVTREDMSSLMHTIYEVVDASVNHSSGSSKTLRVKLVTSPEPSSKKEWLPQGQEREPTRGRTSELPDDP
 RVADRRLSAYSRKPNTPQPQCPVVRVPCVDENTERRNHYLDLAGIENYTSKFGPGSPPEQARQEHHGRAT
 HIPSRRSQESDAHAIHHRRSQVLAEHIVPANEPAPRALAAQPRLKGQEKQFLRSPKGPGLGAPSGSK
 PGKSLSHCLQAVPLSQGAQDGHHLPPPPPQPPQPYGHKRYRQKSREGHSPLKGGHQPMTMEHEVVRDL
 PMLGPEGYVVPMIQRHEHHHHHEHHHHHHHHFHPNAS

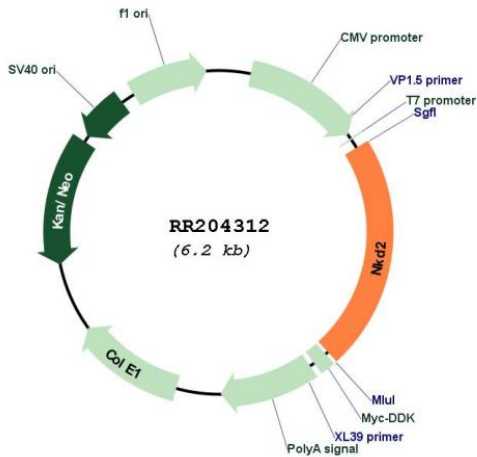
TRTRPLEQKLISEEDLAANDILDYKDDDDKV

Restriction Sites: SgfI-MluI

Cloning Scheme:



Plasmid Map:



ACCN:	NM_001107454
ORF Size:	1374 bp
OTI Disclaimer:	The molecular sequence of this clone aligns with the gene accession number as a point of reference only. However, individual transcript sequences of the same gene can differ through naturally occurring variations (e.g. polymorphisms), each with its own valid existence. This clone is substantially in agreement with the reference, but a complete review of all prevailing variants is recommended prior to use. More info
OTI Annotation:	This clone was engineered to express the complete ORF with an expression tag. Expression varies depending on the nature of the gene.
Components:	The ORF clone is ion-exchange column purified and shipped in a 2D barcoded Matrix tube containing 10ug of transfection-ready, dried plasmid DNA (reconstitute with 100 ul of water).
Reconstitution Method:	<ol style="list-style-type: none">1. Centrifuge at 5,000xg for 5min.2. Carefully open the tube and add 100ul of sterile water to dissolve the DNA.3. Close the tube and incubate for 10 minutes at room temperature.4. Briefly vortex the tube and then do a quick spin (less than 5000xg) to concentrate the liquid at the bottom.5. Store the suspended plasmid at -20°C. The DNA is stable for at least one year from date of shipping when stored at -20°C.
RefSeq:	NM_001107454.1 , NP_001100924.1
RefSeq Size:	4024 bp
RefSeq ORF:	1377 bp
Locus ID:	308068
Cytogenetics:	1p11
MW:	51.3 kDa