

Product datasheet for **RR204286**

Pla2g4a (NM_133551) Rat Tagged ORF Clone

Product data:

Product Type:	Expression Plasmids
Product Name:	Pla2g4a (NM_133551) Rat Tagged ORF Clone
Tag:	Myc-DDK
Symbol:	Pla2g4a
Synonyms:	cPLA2; Pla2c; Pla2g4
Mammalian Cell Selection:	Neomycin
Vector:	pCMV6-Entry (PS100001)
E. coli Selection:	Kanamycin (25 ug/mL)



[View online »](#)

ORF Nucleotide Sequence:

>RR204286 representing NM_133551
 Red=Cloning site Blue=ORF Green=Tags(s)

TTTTGTAATACGACTCACTATAGGGCGGCCGGAATTCGTCGACTGGATCCGGTACCGAGGAGATCTGCC
 GCC**CGCATCGCC**

ATGCTTTTCATAGATCCTTATCAGCACATAATAGTGAACACCAGTATCCATAAGTTTACAGTAGTGG
 TTCTACGTGCCACCAAAGTAACCAAGGGGACCTTTGGCGATATGCTGGACACTCCTGATCCTTATGTGGA
 ACTTTTCATCTCTACAACCCCTGACAGCAGGAAGCGAACAAAGACACTTCAATAATGATATAAACCCCTGTG
 TGGAAATGAGACCTTTGAGTTCATTTTGGATCCTAATCAGGAAAATGTTTTGGAGATCACATTGATGGATG
 CCAATTACGTCATGGATGAAACCCTAGGCACAGCTACATTTCTGTATCTTCTATGAAGTGGGAGAGAA
 GAAAGAAGTCCTTTTATTTCAACCAAGTCACAGAAATGATTCTGAAAATGTCTCTTGAAGTTTGTCTCA
 TGCCACAGCTACGGTTCAGCATGGCACTGTGTGATCAGGAGAAAACATTAGGCAGCAGAGGAAAGAGA
 ACATAAAAGAGAACATGAAGAACTTTTGGGTCCAAAAAAGAGCGAGGGGCTTTATTCCACACGTGATGT
 GCCTGTGGTGGCCATTTTGGGTTCCGGCGGGGTTTCCGGGCCATGGTGGGATTCTCCGGTGTGATGAAG
 GCCTCTATGAATCAGGGATTTTGGATTGTGCGACCTACGTTGCTGGTCTGTCCGGCTCCACATGGTACA
 TGTCAACCTTGTACTCCACCCCTGATTTCCAGAGAAAAGTCTGAGGAGATTAATGAAGAGCTAATGAA
 AAATGTTAGCCACAACCCCTCTTACTTCTTACGCCACAGAAAAGTAAAAGATATGTTGAGTCTTTATGG
 AAGAAGAAAAGTTCTGGCCAACCTGTCACCTTTACTGACATCTTTGGAATGTTAATAGGAGAAAACACTAA
 TTCAAAATAGAATGAGTACGACCTTGAGTAGCTTGAAGGAAAAGGTCAGCGCCGCCCGGTGTCCTCTGCC
 TCTCTTACCTGTCTCCATGTCAAACCGGACGTGTGAGAGCTGATGTTTGCCGATGGGTAGAATTTAGT
 CCATACGAAATGGCATGGCAAAATATGGTACCTTTATGACTCCTGACCTGTTTGAAGCAAATTTTTTA
 TGGGAACAGTTGTAATAAATATGAAGAAAACCCCTTGCATTTCTTAATGGGTGTCTGGGCAGTGCCTT
 TTCTATACTGTTCAACAGAGTTTTGGGAGTTTCTGGCTCACAGAATAAAGGTTCTACAATGGAGGAGGAA
 TTAGAAAATATTACAGCAAAGCACATTGTGAGTAACGACAGCTCTGACAGCGATGACGAGGCCAAAGGAC
 CCAAAGGCACCGAGAATGAAGATGCGGAAAGAGAGTACCAAAATGACAACCAAGCAAGTTGGGTCCATCG
 GATGCTAATGGCCTTGGTGAAGTACTCAGCTTTATTCAATACCCGAGAAGGACGTGCTGGGAAGGTGCAT
 AACTTCATGTTGGGCTTGAATCTCAACACATCGTATCCACTGTCTCCCCTGAGAGACTTCAGCCCCCAAG
 ATTCCTTCGATGATGATGAACCTCGACGCAGCGGTAGCAGATCCAGATGAATTTGAACGAATATATGAACC
 ACTGGATGTCAAAGTAAAAGATTGATGTTGTAGACAGTGGGCTCACGTTTAACTGCCGTATCCCTTG
 ATTCTGCGACCTCAGAGAGGTGTGGATCTCATATTTCTTTGACTTTTCTGCAAGGCCAAGTGACACCA
 GCCTCCATTCAAGGAACCTCTGCTTGCAGAGAAGTGGGCTAAAATGAACAAGCTCCCTTTTCAAAGAT
 TGATCCTTACGTGTTTGTATCGGGAAGGATTGAAGGAATGCTATGTGTTTAAACCTAAGAATCCTGATGTG
 GAGAAGGATTGCCCAACCATTAACACTTTGTTCTGGCCAACATCAACTTCAGAAAAGTACAAGGCCCCAG
 GTGTTCTGAGGGAACCAAGGAAGAGAAAAGAAATAGCTGACTTTGACATTTTCGATGACCCCGAATCGCC
 ATTTTCAACCTTCAACTTCCAGTATCCAAATCAAGCATTCAAAGGCTACATGATCTGATGTACTTCAAC
 AACTGAACAACATTGATGTGATAAAGGATGCCATTGTTGAGAGCATTGAATACAGAAGACAGAACCCAT
 CTCGTTGCTCTGTTCCCTCAGTAATGTTGAGGCAAGAAAATTTCAACAAGGAGTTCCTAAGTAAACC
 CACAGCAGAGTCCATT

ACGCGTACGCGGCCGCTCGAGCAGAACTCATCTCAGAAGAGGATCTGGCAGCAAATGATATCCTGGATT
 ACAAGGATGACGACGATAAGGTTTAA

Protein Sequence: >RR204286 representing NM_133551
Red=Cloning site Green=Tags(s)

```
MSFIDPYQHIIVEHQYSHKFTVVVLRATKVTKGTFGDM LTPDPYVELFISTTPDSRKTRHFNNDINPV
WNETFEFILDPNQENVLEITLMDANYVMDELTGTATFPVSSMKVGEKKEVPFIFNQVTEILEMSLEVCS
CPDLRFSMALCDQEKTFRQQRKENIKENMKLLGPKKSEGLYSTRDVPVAILGSGGGFRAMVGFSGVMK
ALYESGILD CATYVAGLSGSTWYMSTLYSHPDFPEKGPEEINEELMKNVSHNPLLLLTPQKV KRYVESLW
KKKSSGQPVTFTDIFGMLIGETLIQNRMSTLSSLKEKVSAA RCPLPLFTCLHVKPDVSELMFADWVEFS
PYEIGMAKYGTFMTPDLFGSKFFMGTVVKYEE NPLHFLMGVWGS AFSILFN RVLGVSGSQNKGSTMEEE
LENITAKHIVSNDS SDDSDEA QGPKGTENEDAEREYQNDNQASWVHRMLMALVDSALFNTREGRAGKVH
NFMLGLNLNTSYPLSPLRDFSPQDSFDDDELDAAVADPDEFERIEPLDVKSKIHVVDSGLTFNL PYPL
ILRPQRGVDLIISFDFSARPSDTSPPFKELL LAEKWAKMNKLPFKIDPYVFDREGLKECYVFKPKNPDV
EKDCPTIIHFVLANINFRKYKAPGVLRETKEE IADFDIFDDPESPFSTFNFQYPNQAFKRLHDLMYFN
TLNNIDVIKDAIVESIEYRRQNPSRCSVSLSNVEARKFFNKEFLSKPTAESI
```

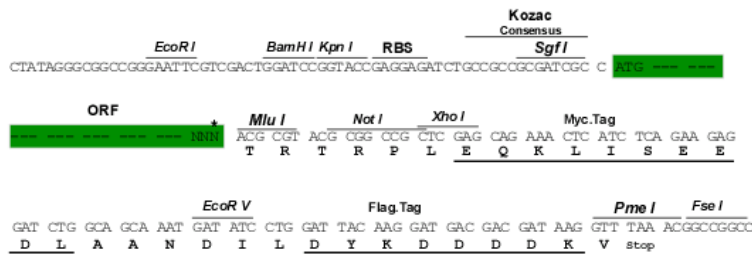
TRTRPLEQKLISEEDLAANDILDYKDDDDKV

Restriction Sites:

Sgfl-MluI

Cloning Scheme:

Cloning sites used for ORF Shuttling:



* The last codon before the Stop codon of the ORF

ACCN: NM_133551

ORF Size: 2256 bp

OTI Disclaimer: The molecular sequence of this clone aligns with the gene accession number as a point of reference only. However, individual transcript sequences of the same gene can differ through naturally occurring variations (e.g. polymorphisms), each with its own valid existence. This clone is substantially in agreement with the reference, but a complete review of all prevailing variants is recommended prior to use. [More info](#)

OTI Annotation: This clone was engineered to express the complete ORF with an expression tag. Expression varies depending on the nature of the gene.

Components: The ORF clone is ion-exchange column purified and shipped in a 2D barcoded Matrix tube containing 10ug of transfection-ready, dried plasmid DNA (reconstitute with 100 ul of water).

Reconstitution Method:

1. Centrifuge at 5,000xg for 5min.
2. Carefully open the tube and add 100ul of sterile water to dissolve the DNA.
3. Close the tube and incubate for 10 minutes at room temperature.
4. Briefly vortex the tube and then do a quick spin (less than 5000xg) to concentrate the liquid at the bottom.
5. Store the suspended plasmid at -20°C. The DNA is stable for at least one year from date of shipping when stored at -20°C.

RefSeq: [NM_133551.2](#), [NP_598235.2](#)

RefSeq Size: 2855 bp

RefSeq ORF: 2259 bp

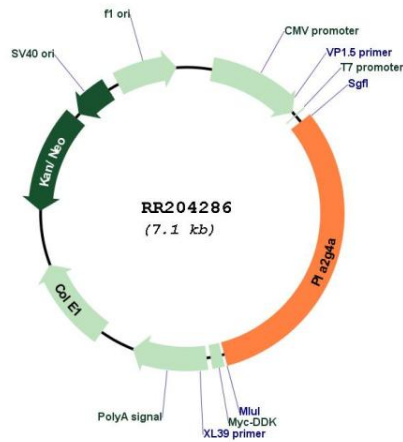
Locus ID: 24653

Cytogenetics: 13q21

MW: 85.6 kDa

Gene Summary: catalyzes the synthesis of COX-2 substrate arachidonic acid (AA); may play a role in epileptogenesis [RGD, Feb 2006]

Product images:



Circular map for RR204286