

Product datasheet for **RR204283**

Mccc1 (NM_001009653) Rat Tagged ORF Clone

Product data:

Product Type:	Expression Plasmids
Product Name:	Mccc1 (NM_001009653) Rat Tagged ORF Clone
Tag:	Myc-DDK
Symbol:	Mccc1
Synonyms:	MGC95141
Mammalian Cell Selection:	Neomycin
Vector:	pCMV6-Entry (PS100001)
E. coli Selection:	Kanamycin (25 ug/mL)



[View online »](#)

ORF Nucleotide Sequence:

>RR204283 representing NM_001009653
 Red=Cloning site Blue=ORF Green=Tags(s)

TTTTGTAATACGACTCACTATAGGGCGGCCGGAATTCGTGACTGGATCCGGTACCGAGGAGATCTGCC
 GCC**CGGATCGCC**

ATGGCGGCGCGGCTCTGTTGGCTGCGGTGGACAGGAACCAAGTTGCGGCGGTCCCGATCCTGCTGCTGC
 AGCCGAGGGAATGGCCTTGAAGCACAGAACCCTGAAATATGGAACAACCCAGGAGGAAGCATCACAA
 GGTCTCATTGCAACAGAGGAGAAATTGCCTGCAGGGTATACGAACAGCCAGAAAAATGGGTGTACAA
 TCTGTGGCTGTTTACAGCGAGGCCGACAGGAATCCATGCATGTAGATATGGCAGACGAGGCGTATTCCA
 TTGGCCCTGCGCCATCTCAGCAGAGCTACCTCGCAATGGAGAAAAATCATCCAAGTGGCAAGAGCTGCG
 AGCACAGGCCATCCATCCAGGATATGGTTTTCTTTCAGAAAAATATGGAGTTTGTGAATTTTGAAGCAA
 GAAGGAATATTTTTATAGTCTCCTTCAACTGCAATTAGAGACATGGGTATAAAGAGCACATCCAAGT
 CCATCATGGCTGCCGCTGGAGTACCTGTTGTGGAAGGTTACCATGGCAACGACCAATCTGATGAGTGCCT
 GAAAGAGCATGCAGGAAAAATCGGGTATCTGTGATGATCAAAGCCATCCGTGGTGGAGGAGGAAAAAGGC
 ATGAGGATCATTAGGTACAGAAAAAGAAATCCAAGAGCAGCTAGAATCAGCCCGGAGGGAGGCAAAAGAAGT
 CTTTCAACGATGACGCAATGCTGATCGAGAAGTTCGTGGACACGCCAAGGCATGTGGAAGTCCAGGTGTT
 TGGTGATCACCATGGCAATGCAGTGTACTTGTGTTGAAAGAGACTGTAGTGTGCAGAGGCGACATCAGAAG
 ATCATTGAGGAGGCCCGCCTGGTATTGATCCTGAAGTAAGAAGGAGGCTGGGAGAGGCTGCAGTCA
 GAGCTGCAAGGCTGTCAACTATGTGGGAGCAGGAAGTGTGGAATTCATTATGGAAGTCAAAGCACAATTT
 TTTTTTATGGAGATGAACACAAGGCTACAAGTGGAGCATCCGGTCACTGAGATGATCACGGGACTGAC
 TTGGTGGAGTGGCAGCTCAGGATTGCAGCAGGGGAAAAAGATCCCTTTGAGCCAGGAAGAAATCCCTCTGC
 AGGGCCATGCCTTTGAGGCCAGAATCTATGCAGAGGATCCTGACAATAACTTCATGCCAGGAGTGGACC
 ATTAGTTCACCTCTACCCCTCCGCCAGACATGTCTACAAGGATCGAAACTGGAGTACGGCAAGGAGAT
 GAAGTCTCGGTGCATTACGACCCATGATCGCAAAGCTGGTGGTGTGGGCTCAGATCGCCAGTCAAGCC
 TGTCAAACTGAGATACAGTCTTCATCAGTACAACATTGTTGGCTTGGCACCAATGTGGACTTCTGCT
 CCGGCTCTCCGGCCACTCAGAGTTTGAAGCTGGGAATGTACACACTGACTTCATCCCTCAACACCACAAG
 GACCTGCTGCCACTCACAGCACCATAGCCAAGGAATCTGTGTGCCAGGCAGCCTTGGGGCTTATCCTCA
 AAGAGAAAGAAATGACCAGCGCTTTAACTCCACACTCAAGATCAATTCCTCCGTTTTTCATTAGCAG
 TGGGAGAAGACTGAATATCTCTTACACCAGGAACATGACTTTAAGAAGTGGTAAAAACGATATAATCATA
 GCTGTGACGTATAACCGAGATGGGTCATATGACATGCAGATTGAAAATAAGTTATCCGAGTCTGGGCG
 ATCTTTCCAATGAGGATGGCTATACCTACCTGAAGTCTTCTGTTAATGGAGTAGCCAGTAAATCCAAGTT
 CATCTCTCTGGACAACACCATCTACCTGTTTTCTATGGAAGGCAGTATTGAAGTTGGCATTCCAGTACCC
 AAGTACTTGTCTCCAGTGAAGTGCAGAAGGAAGTCAAGGAGGCACCATCGCTCCCATGACTGGAACCATTG
 AAAAGGTGTTCTGTAAGGCTGGAGACAGAGTAAAGGCTGGAGACGCTCTGATGGTTATGATCGCCATGAA
 GATGGAGCACACCATAAAAGCCCCAAAGGACGGCAGGATAAAAAAGGTGTTTTTTCAGTGAAGGAGCCCAA
 GCCAACAGACATGCACCTTTAGTGGAGTTTGAAGAGGAGGAAGTC

ACGCGTACGCGGCCGCTCGAGCAGAACTCATCTCAGAAGAGGATCTGGCAGCAATGATATCCTGGATT
 ACAAGGATGACGACGATAAGGTTTAA

Protein Sequence: >RR204283 representing NM_001009653
 Red=Cloning site Green=Tags(s)

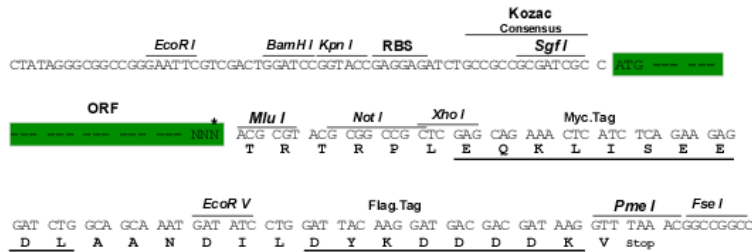
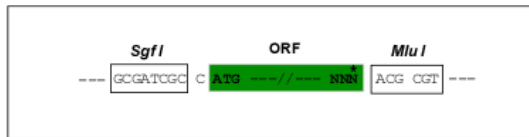
MAAAALLAAVDRNQLRRVPILLLQPREWPWKHRTVKYGTTPGGSITKVL IANRGEIACRVIRTARKMGVQ
 SVAVYSEADRNSMHVDMADAEAYSIGPAPSQSYLAMEKIIQVAKSSAAQAIHPGYGLSENMEFAEFCKQ
 EGIIFIGPPSTAIRDMGIKSTSKSIMAAAGVPVVEGYHGNDQSDECLKEHAGKIGYPMIKAIRGGGGK
 MRIIRSEKEFQEQLSARREAKKSFNDAMLIEKFVDTPRHVEVQVFGDHHGNVYLFERDCSVQRRHQK
 IIEEAPAGIDPEVRRRLGAAVRAAKAVNYVGAGTVEFIMDSKHNFYFMENTRLQVEHPVTEMITGTD
 LVEWQLRIAAGEKIPLSQEEIPLQGHAFARIYAEDPDNNFMPGAGPLVHLSTPPDMSTRIETGVRQGD
 EVSVHYDPMIAKL VVWASDRQSALSKLRYSLHQYNI VGLR TNVDFLLRLSGHSEFEAGNVHTDFIPQHHK
 DLLPTHSTIAKESVCQAALGLILKEKEMTSFKLHTQDQFSPFSFSSGRRLNISYTRNMTLRSGKNDIII
 AVTYNRDGSYDMQIENKLFVRLGDL SNEDGYTYLKSSVNGVASKSKFILLDNTIYLF SMEGSI EIVGIPVP
 KYLSPVSAEGTQGGTIAPMTGTIEKVFVKAGDRVKAGDALMVMIAMKMEHTIKAPKDGR IKKVFVSEGAQ
 ANRHAPLVEFEVEEV

TRTRPLEQKLI SEEDLAANDILDYKDDDDKV

Restriction Sites: SgfI-MluI

Cloning Scheme:

Cloning sites used for ORF Shuttling:



* The last codon before the Stop codon of the ORF

ACCN: NM_001009653

ORF Size: 2145 bp

OTI Disclaimer: The molecular sequence of this clone aligns with the gene accession number as a point of reference only. However, individual transcript sequences of the same gene can differ through naturally occurring variations (e.g. polymorphisms), each with its own valid existence. This clone is substantially in agreement with the reference, but a complete review of all prevailing variants is recommended prior to use. [More info](#)

OTI Annotation: This clone was engineered to express the complete ORF with an expression tag. Expression varies depending on the nature of the gene.

Components: The ORF clone is ion-exchange column purified and shipped in a 2D barcoded Matrix tube containing 10ug of transfection-ready, dried plasmid DNA (reconstitute with 100 ul of water).

Reconstitution Method:

1. Centrifuge at 5,000xg for 5min.
2. Carefully open the tube and add 100ul of sterile water to dissolve the DNA.
3. Close the tube and incubate for 10 minutes at room temperature.
4. Briefly vortex the tube and then do a quick spin (less than 5000xg) to concentrate the liquid at the bottom.
5. Store the suspended plasmid at -20°C. The DNA is stable for at least one year from date of shipping when stored at -20°C.

RefSeq: [NM_001009653.1](#), [NP_001009653.1](#)

RefSeq Size: 2409 bp

RefSeq ORF: 2148 bp

Locus ID: 294972

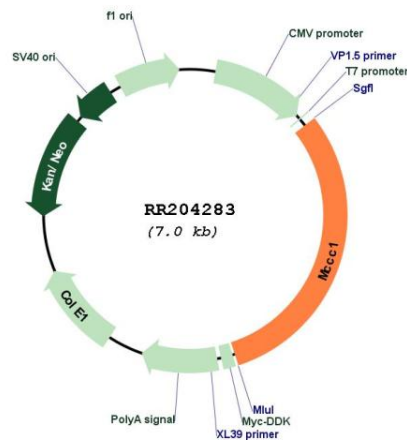
UniProt ID: [Q5I0C3](#)

Cytogenetics: 2q25

MW: 79.3 kDa

Gene Summary: Biotin-attachment subunit of the 3-methylcrotonyl-CoA carboxylase, an enzyme that catalyzes the conversion of 3-methylcrotonyl-CoA to 3-methylglutaconyl-CoA, a critical step for leucine and isovaleric acid catabolism.[UniProtKB/Swiss-Prot Function]

Product images:



Circular map for RR204283