

Product datasheet for **RR204282**

Bud23 (NM_001135743) Rat Tagged ORF Clone

Product data:

Product Type:	Expression Plasmids
Product Name:	Bud23 (NM_001135743) Rat Tagged ORF Clone
Tag:	Myc-DDK
Symbol:	Bud23
Synonyms:	Wbscr22
Mammalian Cell Selection:	Neomycin
Vector:	pCMV6-Entry (PS100001)
E. coli Selection:	Kanamycin (25 ug/mL)
ORF Nucleotide Sequence:	>RR204282 representing NM_001135743 Red=Cloning site Blue=ORF Green=Tags(s)

TTTTGTAATACGACTCACTATAGGGCGGCCGGAATTCGTCGACTGGATCCGGTACCGAGGAGATCTGCC
GCC**CGATCGC**C

ATGGCATCTCGTAGCCGGAGACCAGAACACAGCGGACCGCCAGAGCTGTTTTATGACCAGAATGAAGCCC
GGAAATACGTTTCGCAACTCACGGATGATTGACATCCAGACCAAGATGACTGAGCGAGCACTGGAGCTCCT
CTGTTTGCAGAGGGCCAGCCTTCTTATCTGTTAGACATCGGCTGTGGTTCTGGACTGAGTGGAGACTAT
ATCTCAGAAGAGGGGCACTACTGGTGGCATTGACATCAGCCCTGCCATGTTGGACGCCGCTTGGACC
GCGACACAGAGGGAGACCTACTACTAGGGGACATGGGCCAGGAGTCCCTTTCAGACCGGTTCTTTTGA
TGGCTGCATCAGCATCTCTGCGGTGCAGTGGCTCTGCAACGCAAACAAGAAGTCGGACATCCCTGCCAGG
CGCCTCTACTGCTTCTTTCTTCTCTGTACTCTGCCCTCGTCCGTGGGGCCCGAGCTGTCCTGCAGCTGT
ACCCCGAAGACTCGGAGCAGCTGGAGCTGATCACAACCCAGGCCACGAGAGCAGGCTTCACTGGCGGTGT
GGTGGTGGACTTCCCAACAGTGCCAAAGCAAAGAAGTTCTACCTCTGTCTGTTTTCTGGGCCTTCACC
TCCCTGCCAAAGGGGCTGACTGAAAGTCAGGAAGCAGACCAGGCCTCCGAGTCCGCTTTCACCAAGTGAAC
GGGCTCCACACAAGAAGGCCCGGAGAGACCTGGTGAAGAAGAGCCGGGAGTGGTCTAGAGAAGAAGGA
GAGGCGCAGGCGCCAGGGCAAGGAGTCTCAGACCTGACACGCAGTACACCGGCCCAAGCGCAAGCCCCGC
TTC

ACGCGTACGCGGCCGCTCGAGCAGAACTCATCTCAGAAGAGGATCTGGCAGCAAATGATATCTGGATT
ACAAGGATGACGACGATAAGGTTAA



[View online »](#)

Protein Sequence: >RR204282 representing NM_001135743
Red=Cloning site Green=Tags(s)

MASRSRRPEHSGPPELFYDQNEARKYVRNSRMIDIQTKMTERALELLCLPEGQPSYLLDIGCGSLSGDY
 ISEEGHYWVGIDISPAMLDALDRDTEGDLLLGDMMGQVFPFRPGSFDGCISISAVQWLCNANKKSDIPAR
 RLYCFFSSLYSALVRGARAVLQLYPENSEQLELITQTATRAGFTGGVVDFPNSAKAKKFYLCFLSGPST
 SLPKGLTESQEADQASESAFTSERAPHKKARRDLVKKREWVLEKKERRRRRQKQKEVVRPDTQYTGRRKRKPR
 F

TRTRPLEQKLISEEDLAANDILDYKDDDDKV

Restriction Sites:

SgfI-MluI

Cloning Scheme:

Cloning sites used for ORF Shuttling:



* The last codon before the Stop codon of the ORF

ACCN: NM_001135743

ORF Size: 843 bp

OTI Disclaimer: The molecular sequence of this clone aligns with the gene accession number as a point of reference only. However, individual transcript sequences of the same gene can differ through naturally occurring variations (e.g. polymorphisms), each with its own valid existence. This clone is substantially in agreement with the reference, but a complete review of all prevailing variants is recommended prior to use. [More info](#)

OTI Annotation: This clone was engineered to express the complete ORF with an expression tag. Expression varies depending on the nature of the gene.

Components: The ORF clone is ion-exchange column purified and shipped in a 2D barcoded Matrix tube containing 10ug of transfection-ready, dried plasmid DNA (reconstitute with 100 ul of water).

Reconstitution Method:

1. Centrifuge at 5,000xg for 5min.
2. Carefully open the tube and add 100ul of sterile water to dissolve the DNA.
3. Close the tube and incubate for 10 minutes at room temperature.
4. Briefly vortex the tube and then do a quick spin (less than 5000xg) to concentrate the liquid at the bottom.
5. Store the suspended plasmid at -20°C. The DNA is stable for at least one year from date of shipping when stored at -20°C.

RefSeq: [NM_001135743.1](#), [NP_001129215.1](#)

RefSeq Size: 1303 bp

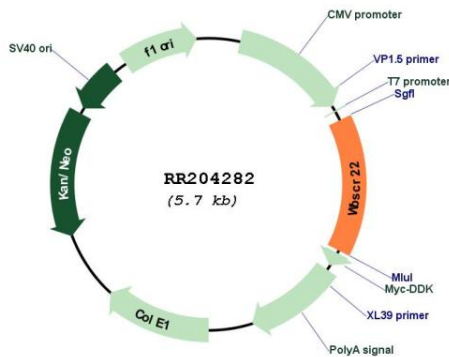
RefSeq ORF: 846 bp

Locus ID: 368084

Cytogenetics: 12q12

MW: 31.6 kDa

Product images:



Circular map for RR204282