

Product datasheet for **RR204259**

Ptpn22 (NM_001106460) Rat Tagged ORF Clone

Product data:

Product Type:	Expression Plasmids
Product Name:	Ptpn22 (NM_001106460) Rat Tagged ORF Clone
Tag:	Myc-DDK
Symbol:	Ptpn22
Synonyms:	Ptpn8
Mammalian Cell Selection:	Neomycin
Vector:	pCMV6-Entry (PS100001)
E. coli Selection:	Kanamycin (25 ug/mL)



[View online »](#)

ORF Nucleotide
Sequence:

>RR204259 representing NM_001106460
 Red=Cloning site Blue=ORF Green=Tags(s)

TTTTGTAATACGACTCACTATAGGGCGGCCGGGAATTCGTGACTGGATCCGGTACCGAGGAGATCTGCC
 GCC**CGGATCGCC**

ATGGACCAAGAGAAATTCTGCAGCAGCTACTGAAAGAGGCCAGAAAAAGAAAATTAACAGGGAGGAGT
 TTGCCAATGAATTTCTGAAGCTGAAAAGGCAATCTACCAAGTACAAGGCAGACAAAATATATCCTACAAC
 CGTGGCTCAGAGGCCAAGAATATCAAGAAAAACAGATACAAGGATATTTTGGCCCTATGATCACAGCCTG
 GTAGAGCTGTCTCTGTTAACGTCCGATGAGGACTCCAGTTACATCAATGCCAGCTTTATTAAGGGTGTCT
 ATGGGCCAGGGCTTATATTGCCACTCAGGGTCTTTATCTACAACCTCCTGGACTTCTGGAGGATGAT
 CTGGGAATACCGTGTCTTGGTCACTGTCATGGCATGTATGGAGTTCGAAATGGGAAAGAAAAAGTGTGAG
 CGTTATTGGGCTGAGCCAGGAGAAACACAGCTGCAATTTGGCCCTTTTCTATATCCTGTGAAACTGAGA
 AAAAGAAATCTGATTATAAAATCAGGACTCTGAAAGCCAAGTTCAATAGTAAACTCGAATTGTTTACCA
 GTTTCATTATAAGAATTGGCCGGACCATGATGTGCCTTCTCTATAGACCCTATCCTTCAGCTCATCTGG
 GATATGCCGTGTACCAAGAAGACGACTGCGTTCTCTATGCATTCAATGCAAGTCCGGCTGCGGAAGGA
 CGGGGGTCATTTGTGCTGTTGATTATACATGGATGTTGCTGAAAGATGGGATAATTCCTAAGAACTTCAG
 TGTTTTAATTTGATTACGAAAATGCGAACACAGAGGCCTTCGCTAGTTCAAACCTCAGGAACAGTACGAA
 CTGGTCTACAGCGCTGTGTTGGAAGTGTAAAGAGGCAGTGGACATTATCTCTGATAATCACCGTGAAA
 GAGAGATTCAAGCAGAATGTTCAATTCCTGAACAAAAGCTCACTATAGAAGCTGACTCTTATCCTCTGGA
 TTTTCCAAAAACGCCGTGAGAGATGCAAAAATGACAAACCAGCAGAGCAAAACAGGGCGGAAGCGGAG
 AGCACCGAAGTGTCTTCTTTGGCCTTAGAACTTCTAAGATAAGTCCAAGGAAGAGTTGGTTTTGCACT
 CTAATCTAGCCCTTCTTTGACTGTTTAGAGCTAAACTGTGAGTGTAAACAGGCTGTATAACCGGAA
 CGGGCAGGCGAGGGCTTCTCTGGTCGTGGGAGAGCCGCTTCAGAAGTATCAAAGTCTGGACTTCGGTTCC
 ATATTGTTGGTGTGCTCCTAGTGCTCTGCCATAAACACAGCGAGCAGATGTACAACCTCAAAGGGC
 CAGTAAAACGGACCAATCAACTCCTTTGAACTGATTACAGCAGAGGAAAAACAAACGAGTTAGCTGTGGA
 AGACGGTCTTTCATGCTTGAATCTCAGCTGCTCGAGCACGGTCTCATGGAGTTCAGGCGCAAAAAGTG
 GCCCATGCTTCTCAGAAGAACTGAACTATTATTGCCGCTGCCTGCGAACGCCCGCATGTGATGCAT
 CTTGTGTACCGCAGGACGGCCCGGTGCTTTGAGAGAGCATTGTGTATGTCTTTAGCGGAAGATCCTTA
 CTTTTCATCATCCCTCCAAATAGTGCTGGTCTAAGATGTCTTTGATCTGCCTGAGAAACAAGATGGA
 GCCACTTCTCCTGGTGTCTCAGCTGCCAGCCTCTTCTGCAGCCTCCTCTTATAGTAACCCACGGGATT
 CCTAATGGAGAGCACTTAACCAAGCTTTCCCGCCCAATAAACCAAGAGACAGCTATAGAAGCCACTTC
 TGCAAGGACAGATGATGAAATCCCCCGCCACTCCCTGAACGGACACCTGAGTCCTTCATTGTGGCCGAA
 GCAGCCGGAGAGCCCTCGCCAAGCATTACTGAGTCCTTACCTCTGGCAGGAAAATCTGGAGTGACTGG
 AATGCGGGGGAACATCTGAGTCACAGAGCCATGACTTGGTGGCGTTTACGTCAAGCAAGAATGTGGAAC
 CGGAAGTCCCAATCAGATCAACATCAGGATGGTTCTCCTCCACCTCCACTCCCAGAAAGAACTCTGGAG
 TCCTTCTTTCTGCTGACGAGGACTGTATACAGGCCAACCCATGAAACCTTCTCTATTAGCTATCCTG
 AAACCACAGAGATCTCCACATCTTCTAAGCAAACATTGAAGACCCAGGAAAAAGTTTACAAGGAGCAA
 GAGTTTGAAGATTTTCCGAAATATGAAAAAAGTGTTTGTAATTCTCCCTCACCAAGCAAGCCTACAGAA
 TGTGTTACGCCAAAAAATCCAGCTCCTTCTGAATTTTGGTTTTGGAACCTGTTTTTCAAACCCAAAG
 GACCAAGGAACCCACCATCAACTTGAATATT

ACGCGTACGCGGCCGCTCGAGCAGAACTCATCTCAGAAGAGGATCTGGCAGCAAATGATATCCTGGATT
 ACAAGGATGACGACGATAAGGTTTAA

Protein Sequence:

>RR204259 representing NM_001106460
 Red=Cloning site Green=Tags(s)

MDQREILQQLLKEAQKKKINREEFANEFLKLRQSTKYKADKIYPTTVAQRPKNIKKNRYKDILPYDHS
 VELSLTSDSDSSYINASFVIGVYGPAYIATQGPLSTLLDFWRMIWEYRVLVIVMACMEFEMGKKKCE
 RYWAEPGETQLQFGPFSISCETEKKKSDYKIRTLKAKFNSETRIVYQFHYKNWPDHDPSSIDPILQLI
 DMRCYQEDDCVPLCIHCSAGCGRTGVICAVDYTWMLLKDGIIPKNFSVFNLIQEMRTQRP
 SLVQTQEYELVYSAVLELFKRHVDIISDNHREREIQAECSIQEKLTIKIEADSYPLDFPKNAVRDAKMTNQQSKQGA
 EAE STEVSSFGLRTSKISAKEELVLHSKSSPSFDCLELNCECNKAVITRNGQARASLVVGEPLQYQSLDFGS
 ILFGSCPSALPINTASRCHNSKGPVKRTKSTPFELIQQRKTNELAVEDGSSCLESQLEHGLMELQAQKV
 AHASSEELNYSLPRACERPACDASCVPQDGGALREHLCMSLAEDPYFSSPPNSAGSKMSFDLPEKQDG
 ATSPGAQLPASSAASSYSNPRDSLMESTLTSFPPPINQETAIEATSARTDDEIPPLPERTPESFIVAE
 AAGEPPSITESLPLAGKSGVTLECGGTSESQSHDLVAF TSSKNVELGSPKSDQHGDGSPPPPLPERTLE
 SFFLADEDCIQAQPMKPSISYPETTEISTSSKQTLKTPGKSFTRSKSLKIFRNMKKSVCNSPSPSKPTE
 CVQPKNSSSFLNFGFGTRFSKPKGPRNPPSTWNI

TRTRPLEQKLI SEEDLAANDILDYKDDDDKV

Restriction Sites:

Sgfl-MluI

Cloning Scheme:



ACCN: NM_001106460

ORF Size: 2412 bp

OTI Disclaimer: The molecular sequence of this clone aligns with the gene accession number as a point of reference only. However, individual transcript sequences of the same gene can differ through naturally occurring variations (e.g. polymorphisms), each with its own valid existence. This clone is substantially in agreement with the reference, but a complete review of all prevailing variants is recommended prior to use. [More info](#)

OTI Annotation: This clone was engineered to express the complete ORF with an expression tag. Expression varies depending on the nature of the gene.

Components: The ORF clone is ion-exchange column purified and shipped in a 2D barcoded Matrix tube containing 10ug of transfection-ready, dried plasmid DNA (reconstitute with 100 ul of water).

- Reconstitution Method:**
1. Centrifuge at 5,000xg for 5min.
 2. Carefully open the tube and add 100ul of sterile water to dissolve the DNA.
 3. Close the tube and incubate for 10 minutes at room temperature.
 4. Briefly vortex the tube and then do a quick spin (less than 5000xg) to concentrate the liquid at the bottom.
 5. Store the suspended plasmid at -20°C. The DNA is stable for at least one year from date of shipping when stored at -20°C.

RefSeq: NM_001106460.1, NP_001099930.1

RefSeq Size: 2747 bp

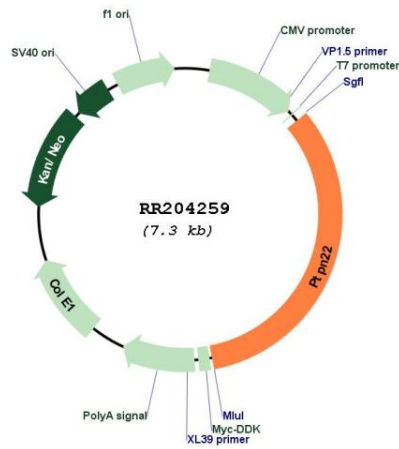
RefSeq ORF: 2415 bp

Locus ID: 295338

Cytogenetics: 2q34

MW: 89.6 kDa

Product images:



Circular map for RR204259