

Product datasheet for **RR204254**

Pcdhga12 (NM_001037337) Rat Tagged ORF Clone

Product data:

Product Type:	Expression Plasmids
Product Name:	Pcdhga12 (NM_001037337) Rat Tagged ORF Clone
Tag:	Myc-DDK
Symbol:	Pcdhga12
Vector:	pCMV6-Entry (PS100001)
E. coli Selection:	Kanamycin (25 ug/mL)
Cell Selection:	Neomycin



[View online »](#)

ORF Nucleotide
Sequence:

>RR204254 representing NM_001037337
 Red=Cloning site Blue=ORF Green=Tags(s)

CTATAGGGCGGCCGGGAATTCGTCGACTGGATCCGGTACCGAGGAGATCTGCCGCCGCGATCGCCGGCGC
 GCC

ATGATCCCATGCAAAGGCCGGAGGACTGCAAAGGCTGGTATTCTGGGAGTCTTCTTCGGGATGCTGT
 GGAAGCCGATCCACCCAGATACGCTATTCCGTTCCGGAGGAGCTGGAGAAAGGATCTAGGGTGGGCAA
 CATCTCCAAGGATCTGGGGCTGGAGCCCGCGAGCTGGCGGAGCGAGGGTCCGCATCGTCTCCAGAGGT
 AGGGCTCAACTTTTCGCTCTAAACCCTCGAAGCGGCAGCTTGGTCACCGCGGCAAGATAGACGGGAGG
 AGCTGTGTATGGGGTCCATCAAGTGTCAAGTAACTAGAGATTCTAATGGAAGATATAGGGAAAATATA
 CGGAGTAGAAATAGAAGTGAAGGACATTAAACGACAACGCACCCTACTCCGTAAGTGAATTAGAAATA
 AAAATGAGTGAACGCCCGCTGGAATGCGATTCCCTCTCCACGCTTGGGATCCAGATATCGGGA
 AGAAGTCTTTCAGAGCTACCAGCTCAGCCGAATGCTCACTTCTCGCTCGAGGTGCAGAAGGGAGCTGA
 TGGAACAAGTACCCAGAATTGGTGTGGAGAGCTCGTGGACCGGGAGGAAAAGCCGCTCACCTCCTA
 GTCCCTACCGCTTCGGACGCGGGAGACCCGGTTCGCTCCGGCACGCGCGCATCCTTGTGACGGTCCTAG
 ATGCAAAATGACAACGCGCCAGCGTTTGCTCGGTCCGAGTACCGCGTGAATGTGCGGGAGAACGTGGCCGT
 GGGCACTCAGCTGCTGCTGGTCAACGCCACCGACCGGGACGAAGGATCCAATGCGGAAGTGTATTTCC
 TTCCGGTATGTAGATGACAAGGCAGCTAAAGTTTTCAAGCTAGACAGTAATTTGGGAACAATATCAACAA
 TAGGGGAGCTGAACCATGAAGAATCGGGGTTCTACGAGATGGAAGTGAAGCAACAGATAACCGGGGATT
 TTCTGCACGGGCAAGGTCTGGTACAGTTCTGGACGTGAACGACAATGCCCTGAAGTAGCCATCACC
 TCCCTCAACAGCCCGTTCAGAAAACCTCCCGAGGGACATTAATAGCCCTTTAAATGTAAGTAAAGTACC
 AAGATTTGGGAAAATGGACAGTAATCTGTTCCATCCAAGAGAATCGCCCTTTAAATGTAAGTAAAGTACC
 TTACGGAAAACACTACTATAGTTTACTCACAGATGCAGTCTAGACCGTGAACAGGTTCCCTAGTTATAATATC
 ACGGTGACCGCCACTGACAGGGGAAGTCCGCCCTGACAACCGAAAACCTCCTCTCGCTGAATGTAGCGG
 ACGCAACGATAACCCGCCATTTTCTTCAGGCCTCATACTGGGCTATATCCAGGAGAATAACCCTAG
 AGGGGCTTCTATCGCGTCCGTGACCGCCACGACCCTGACAGTGACAAAAATGCCAAGTCACTTACTCC
 CTAGCTGAGGACACACCAGGGCGTCCCTTTCTCTTATGTCTTCAACTCGGATACTGGTGTCC
 TGTACGCGCTGCACTCCTTTGACTATGAGCAGTCCCAGACCTACAGCTGCAAGTGTAGCACGTGACAG
 CGGGGAGCCGCCCTCAGCAGCAACGTGTCGCTGAGCCTGTTCTGTGCTGGATCAGATGACAACACCCCC
 GAAATCTTGTACCCACTCTCCCTACCGATGGTCTACTGGAGTGGAGCTAGCACCCGCTCAGCAGAGC
 CTGGCTATCTGGTGACAAAGGTGGTGGCAGTGGACAGAGACTCAGGACAAAACCGCTGGCTGTCTACCG
 TCTGCTAAAGGCCAGCGAGCCAGGACTTCTCGGTGGGGCTGCACACCGCGGAGGTGAGCACGGCTCGG
 GCCCTGATGGACAGAGATGCTCTCAAGCAGAACCTTGTAGTGTCTGTGACAGGACCACGGCCAGCCTCCTC
 TCTCCGCCACTGTACGCTCACTGTGGCGATCGCCGACAGTATCCCCGACGTCTGGCAGATTTGGACAA
 TCTAGAATCTCTACCACCTCTGAAACCTCAGGTCTCACGCTGTATCTGGTGGTGGCCGTGGCAGCGGT
 TCCATGGTCTTCTGGTCTTTGTTCTGGTGTGCTGGCGCTCAGGCTGCGGCGTGGCACTCACTGCGCC
 TGCTCCGGGTGCGGGACCCGGATTGGCTGACGTTGCAGCCTCTCGTTTTGTGGGCGTAGATGGAGTGCA
 AGCTTTCTTGACACCTATTGCGACGAGGTCTCGCTCACTGCGGGCTCCGAAAAGAGTCACTTGATTTTC
 CCGCAGCCCAACTATGCAGACACGCTAATCAGCCAGGAGAGCTGCGAGAAAACCGAGCCTTTTTGCCAT
 CGAGTGATTTGGTATTTTCTAAAGACAATCATGCATTAATCAGCAAGCCCCGCCAACACTGACTGGCG
 TTTCTCTCAAGCCAGAGACCCGGCAGGCGGATCCCAAAATGGGGATGAAACCGGCACCTGGCCCAAC
 AACCGATTGATACAGAGATGCTGCAAGCCATGATCTTGGCCTCTGCCAGTGAAGCCGCTGATGGGAGCT
 CCACTCTGGGAGGGGCACTGGCACTATGGGTTTGAAGCGCTCGATATGGACCCAGTTTACCCTGCAGCA
 CGTGCCTGACTACCGCCAGAACGTGTACATCCCTGGCAGCAATGCCACTGACCAACGCAGCTGGCAAA
 CGAGATGGCAAGGCTCCGGCAGGCGCAATGGCAACAAGAAGAAGTGGGCAAGAAGAGAAGAAG

ACGCGTACGCGGCCGCTCGAGCAGAAAACCTCATCTCAGAAGAGGATCTGGCAGCAAATGATATCCTGGATT
 ACAAGGATGACGACGATTAAGTTTAA

Protein Sequence: >RR204254 representing NM_001037337
 Red=Cloning site Green=Tags(s)

MIPMQRPEDCKGLVFLGVFFGMLWEAGSTQIRYSVPEELEKGSRVGNISKDLGLEPRELAERGVRIIVSRG
 RAQLFALNPRSGSLVTAGKIDREELCMGSIKQQLNLEILMEDIGKIYGVIEIVRDINDNAPYFRESELEI
 KMSENAAAAGMRFPLPHAWDPDIGKNSLQSYQLSPNAHFSLEVQKGADGNKYPELVLESSLDREEKAAHLL
 VLTASDAGDPVRSGTARILVTVLDANDNAPAFARSEYRVNVRENVAVGTQLLL VNATDRDEGSNAEVIYS
 FRYVDDKAAKVFKLDNSLGTISTIGELNHEESGFYEMEVQATDNAGFSARAKVLVTVLDVNDNAPEVAIT
 SLNSPVPENSPRGTLIALLNVDQDSGENGQVICSIQENLPFKLEKSYGNYYSLLTDAVLDREQVPSYNI
 TVTATDRGSPPLTTETHLSLVADANDNPPIFLQASYWAYIQENNPRGASIASVTAHDPDSDKNAQVTS
 LAEDTHQGVPLSSYVSINSDTGVLVALHSFDYEQFQDLQLQVIARDSGEPPLSSNVLSLFLVDQNDNTP
 EILYPTLPTDGGTGVELAPRSAEPGYLVTKVAVDRDSGQNAWLSYRLLKASEPGLFSVGLHTGEVSTAR
 ALMDRDALKQNLVVSVDHQPPLSATVTLTVAIADSIQVLDLADLNLESPPTTSETSGLTLVYVVAVAV
 SMVFLVFVLLALRLRWHSRLRLRAAGPGLADVAASRFVGVQAFVLTQYSHEVSLTAGSRKSHLIF
 POPYADTLISQESCEKTEPLLPSDDL VFSKDNHALNQAPPNTDWRFSQAQRPGTSGSQNGDETGTWPN
 NQFDTEMLQAMILASASEAADGSSTLGGGTGTMGLSARYGPQFTLQHVDPYRQNVYIPGSNATLTNAAGK
 RDGKAPAGGNGNKKKSGKKEK

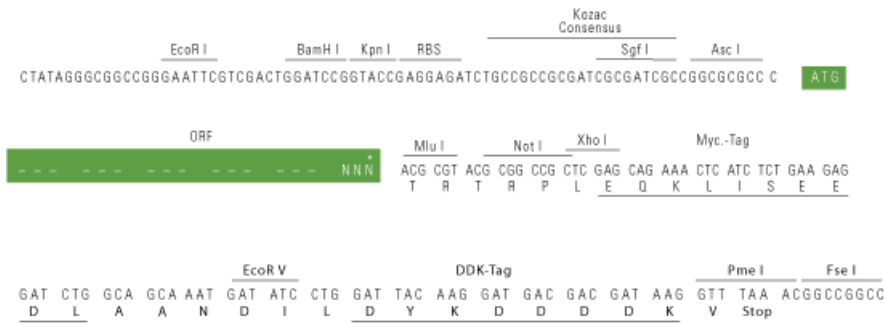
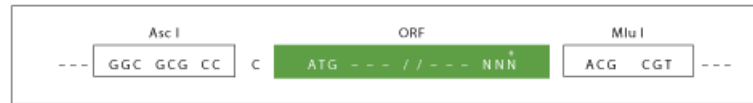
TRTRPLEQKLISEEDLAANDILDYKDDDDKV

Restriction Sites:

AscI-MluI

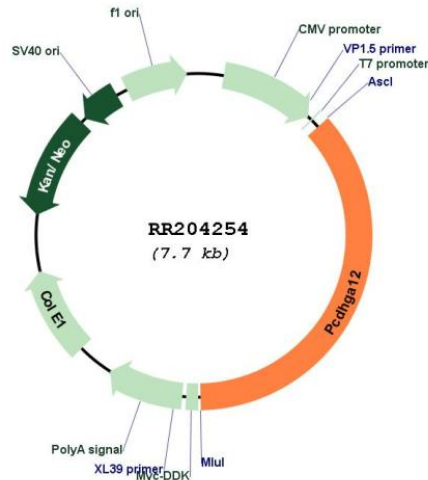
Cloning Scheme:

Cloning sites used for ORF Shuttling:



* The last codon before the Stop codon of the ORF

Plasmid Map:



ACCN: NM_001037337

ORF Size: 2796 bp

OTI Disclaimer: The molecular sequence of this clone aligns with the gene accession number as a point of reference only. However, individual transcript sequences of the same gene can differ through naturally occurring variations (e.g. polymorphisms), each with its own valid existence. This clone is substantially in agreement with the reference, but a complete review of all prevailing variants is recommended prior to use. [More info](#)

OTI Annotation: This clone was engineered to express the complete ORF with an expression tag. Expression varies depending on the nature of the gene.

Components: The ORF clone is ion-exchange column purified and shipped in a 2D barcoded Matrix tube containing 10ug of transfection-ready, dried plasmid DNA (reconstitute with 100 ul of water).

Reconstitution Method:

1. Centrifuge at 5,000xg for 5min.
2. Carefully open the tube and add 100ul of sterile water to dissolve the DNA.
3. Close the tube and incubate for 10 minutes at room temperature.
4. Briefly vortex the tube and then do a quick spin (less than 5000xg) to concentrate the liquid at the bottom.
5. Store the suspended plasmid at -20°C. The DNA is stable for at least one year from date of shipping when stored at -20°C.

RefSeq: [NM_001037337.1](#), [NP_001032414.1](#)

RefSeq Size: 4738 bp

RefSeq ORF: 2799 bp

Locus ID: 498850

Cytogenetics: 18p11

MW: 100.9 kDa