

## Product datasheet for **RR204252**

### Ramp3 (NM\_020100) Rat Tagged ORF Clone

#### Product data:

Product Type: Expression Plasmids  
Product Name: Ramp3 (NM\_020100) Rat Tagged ORF Clone  
Tag: Myc-DDK  
Symbol: Ramp3  
Vector: pCMV6-Entry (PS100001)  
E. coli Selection: Kanamycin (25 ug/mL)  
Cell Selection: Neomycin  
ORF Nucleotide Sequence: >RR204252 representing NM\_020100  
Red=Cloning site Blue=ORF Green=Tags(s)

TTTTGTAATACGACTCACTATAGGGCGGCCGGAATTCGTCGACTGGATCCGGTACCGAGGAGATCTGCC  
GCC**CGATCGCC**

ATGGCGACCCCGGCACAGCGGCTGCACCTTCTCCCTCTGTTGCTGCTGCTTTGTGGTGAGTGTGCCAAG  
TATGCGGTTGCAATGAGACAGGAATGCTGGAGAGTTGCCTCGCTGTGGAAAGCCTTTGCCGAAATGAT  
GCAGAAGGTGGACGTCTGGAAGTGGTCAACCTGTCGGAGTTCATCGTGTACTACGAAAGCTTCACTAAC  
TGCACGGAGATGGAGACAAACATCGTGGGCTGCTACTGGCCCAACCCGCTGGCCAGAGCTTTATCACGG  
GTATCCATAGGCAGTTCTTTTCCAACCTGCACTGTGGACAGGACCCACTGGGAAGACCCCGGATGAAGT  
TCTCATCCCACTTATCGCAGTTCAGTCTTGTGACCGTGGCTATGGCTGGGCTGGTGGTATGGCGTAGC  
AAGCGCACTGACCGGCTTCTG

**ACGCGT**ACGCGGCCGCTCGAGCAGAACTCATCTCAGAAGAGGATCTGGCAGCAAATGATATCCTGGATT  
ACAAGGATGACGACGATAAGGTTTAA

Protein Sequence: >RR204252 representing NM\_020100  
Red=Cloning site Green=Tags(s)

MATPAQRLHLLPLLLLLCGECAQVCGCNETGMLERLPRCGKAF AEMMQVDVWKC NLSEFIVVYESFTN  
CTEMETNIVGCYWPPLAQSFITGIHRQFFSNCTVDRTHWEDPPDEVLIPLI AVPVLLTVAMAGLVVWRS  
KRTDRLL

**TR**TRPLEQKLI SEEDLAANDILDYKDDDDKV

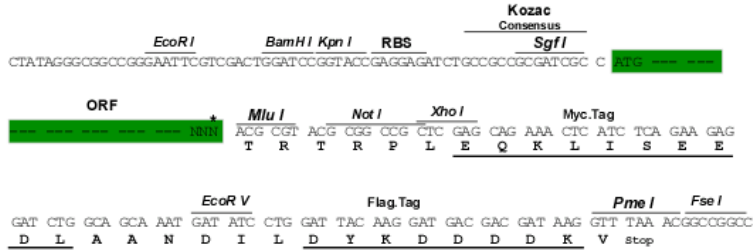
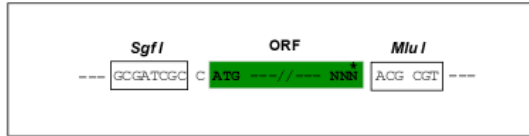
Restriction Sites: SgfI-MluI



[View online »](#)

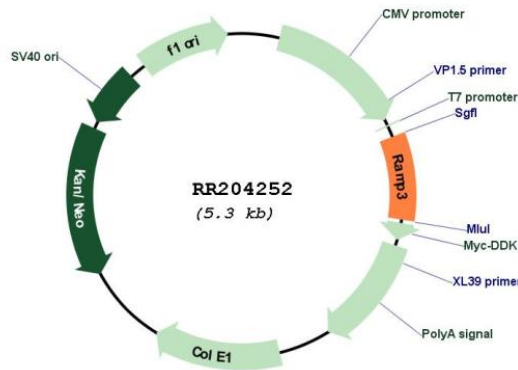
## Cloning Scheme:

Cloning sites used for ORF Shuttling:



\* The last codon before the Stop codon of the ORF

## Plasmid Map:



ACCN: NM\_020100

ORF Size: 441 bp

<b>OTI Disclaimer:</b>	<p>Due to the inherent nature of this plasmid, standard methods to replicate additional amounts of DNA in E. coli are highly likely to result in mutations and/or rearrangements. Therefore, OriGene does not guarantee the capability to replicate this plasmid DNA. Additional amounts of DNA can be purchased from OriGene with batch-specific, full-sequence verification at a reduced cost. Please contact our customer care team at <a href="mailto:custsupport@origene.com">custsupport@origene.com</a> or by calling 301.340.3188 option 3 for pricing and delivery.</p> <p>The molecular sequence of this clone aligns with the gene accession number as a point of reference only. However, individual transcript sequences of the same gene can differ through naturally occurring variations (e.g. polymorphisms), each with its own valid existence. This clone is substantially in agreement with the reference, but a complete review of all prevailing variants is recommended prior to use. <a href="#">More info</a></p>
<b>OTI Annotation:</b>	<p>This clone was engineered to express the complete ORF with an expression tag. Expression varies depending on the nature of the gene.</p>
<b>Components:</b>	<p>The ORF clone is ion-exchange column purified and shipped in a 2D barcoded Matrix tube containing 10ug of transfection-ready, dried plasmid DNA (reconstitute with 100 ul of water).</p>
<b>Reconstitution Method:</b>	<ol style="list-style-type: none"> <li>1. Centrifuge at 5,000xg for 5min.</li> <li>2. Carefully open the tube and add 100ul of sterile water to dissolve the DNA.</li> <li>3. Close the tube and incubate for 10 minutes at room temperature.</li> <li>4. Briefly vortex the tube and then do a quick spin (less than 5000xg) to concentrate the liquid at the bottom.</li> <li>5. Store the suspended plasmid at -20°C. The DNA is stable for at least one year from date of shipping when stored at -20°C.</li> </ol>
<b>RefSeq:</b>	<p><a href="#">NM_020100.2</a>, <a href="#">NP_064485.2</a></p>
<b>RefSeq Size:</b>	<p>1234 bp</p>
<b>RefSeq ORF:</b>	<p>444 bp</p>
<b>Locus ID:</b>	<p>56820</p>
<b>UniProt ID:</b>	<p><a href="#">Q9JJ73</a></p>
<b>Cytogenetics:</b>	<p>14q21</p>
<b>MW:</b>	<p>16.8 kDa</p>
<b>Gene Summary:</b>	<p>transports calcitonin receptor-like receptor (Calcr) to the cell membrane and determine its glycosylation state and ligand specificity as a functional adrenomedullin receptor [RGD, Feb 2006]</p>