

Product datasheet for **RR204232**

Man2b1 (NM_199404) Rat Tagged ORF Clone

Product data:

Product Type:	Expression Plasmids
Product Name:	Man2b1 (NM_199404) Rat Tagged ORF Clone
Tag:	Myc-DDK
Symbol:	Man2b1
Synonyms:	Manb
Vector:	pCMV6-Entry (PS100001)
E. coli Selection:	Kanamycin (25 ug/mL)
Cell Selection:	Neomycin
ORF Nucleotide Sequence:	>RR204232 representing NM_199404 Red=Cloning site Blue=ORF Green=Tags(s)

TTTTGTAATACGACTCACTATAGGGCGCCGGGAATTCGTCGACTGGATCCGGTACCGAGGAGATCTGCC
GCC**CGGATCGCC**

ATGGGCACCGGATCGCTTGGCCCTGGTGTCCGTGCTGGTGGCGGGAACACTGGGTGGCTCTGGATGAGCT
CCTGCAACTTAGGTTTGCCAGTCTGTCTATTTCTTTCTTATTGGTTGTTACTGGCTGCGCCTGGCGC
TCAGGCCGCGGGTTACAAGACATGTCCCACCACGAAGCCAGGCATGCTCAACGTGCACCTGCTGCCTCAC
ACACACGATGATGTGGGCTGGCTGAAGACAGTAGACCAATACTACTACGGCATCATGAGTGACGTCCAGC
ATGCATCTGTTTACGTACATCCTAGACTCAGTGATTTACTCTCTACTGAACGATCCCACCCGTCGTTTCAT
ATACGTGGAAATGGCTTTCTTCTCCCGTTGGTGGGAGCAGACCAATGTAACACAGGACGCTGTACGG
AACCTGGTGCAGCCAGGGGCGCCTGGAGTTGTCAATGGTGGCTGGGTAATGAATGATGAGGCAGCCACTC
ACTATGGTGCTATTGTGGACCAGATGACACTGGGCTACGCTTCTGCAGGACACATTTGGTAGTGATGG
ACTTCCCGTGTGGCCTGGCACATTGACCCTTTGGCCATTCTCGAGAACAGGCCTCCCTGTTTGCCAG
ATGGGTTTTGATGGCTTCTTCTCGGGCGCATTGACTACCAAGATAAAATTAACCGGAAGAGAAAGCTGA
AGATGGAGGAACCTGGAGGGCTAGCGCCAGCTTGAAGCCCCCTGCTGCTGACCTTTACTGGTGTGCT
CCCAATAAATTACAACCTCCAAAAGACCTGTGCTGGGATGTGCTGTGTACAGACCCCTCCCGTGGTGGAC
GATCCCAAGCCCTGAGTTAATGCCAATAAGTTGGTTGATTACTTCTGAACCTCGCCTCTTCCAG
AAAAGTATTACCGAACCAACCACACCGTGATGACCATGGGCTCAGACTTCCAGTATGAGAATGCCAACAT
GTGGTTCAAAAACATGGACAAGCTTATCCGCTGGTCAACGAGCAGCAGGCAAACGGGAGCAAGTCCAC
GTGCTCTACTCCACCCCTTCGTGTTACCTCTGGGAGCTGAACAAGGCCAATCTCACTTGGACAGTGAAGG
AGGACGACTTCTTTCCTTATGCTGATGGCCCCACATGTTCTGGACTGGCTATTTCTCCAGTAGGCCAGC
CCTCAAGCGCTATGAGCGCCTCAGCTACAATTCTGCAGGTGTGCAACCAGCTGGAAGCACTGGTGGGT
CCCGAGGCCAAAGTGGGACCCTACGGCTCAGGAGACAGTGCACCCCTCAATGAGGCAATGGCGGTGCTGC
AGCACCAGATGCTGCTACTGGTACTGCAAGGCAGAATGTTGTCAATGACTATGCGAAGCAGCTGGCGGC
AGGCTGGGGACCTGTGAGGTTCTCGTGAGCAACGCTCTGGCGGACTCAGCCTTACAACAGAACTTC
TCATTCTGTCGGGAGATCAACATCAGTATCTGCCAGCCAGCCAGACGTCAGAGCACTTCCGGGTAATTA



TTTACAACCCCGTGGGGCGGAAGGTGGATCTGATGGTTCCGGCTGCCGGTCAGTGAAGGCATCTTCCTTGT
 GAAGGACCCTAACGATAGGAGAATTTCCAGTAATGTGGTATGGTTCCCAGTGCTTACAGTAAGACGTAT
 CAATGGGAGCTGCTGTTCCCAGCCTCAGTGCCTGCCCTGGGCTTCCAGCATCTACTCTGTGAACAAAATGA
 GTGGCCATAACCATCAGGCCACAACCTAACGGCCAGGCCAAGAAATCCAAGTCCCCTGTCTTAGTCAT
 TGAATAAAGTACATACGGGCCACATTTGACTCTGACACAGGGTATTGAGGAAGATTGAAAACCTGGAA
 CAGAACATTTCCGCTCCCTGTGAGACAAGGCTTCTTTGGTACAATGCCAGCGCTGGTGATGAGGAGATC
 CTCAGGCTCTGGTGCCTACATCTTCAGACCCAGTCATCGTAAACCACTGCCTGTGAGCCACTGGGCTCA
 GGTCACTTTGGTGAAGACAACTTGGTGCAGGAGGTACACCAGAATTTTTCAGCCTGGTGTCCCAAGTG
 ATTCGCTGTATGAAGGACAGCGTCATTTGGAGCTGGAGTGGACGGTGGGACCAATCCCAGTGAAAAGATG
 ACTGGGAAAGGAAGTCATCAGCCGCTTAAACACCCCGATGAGAACCAGGGGGCAGTTCTTCACGGACAG
 CAACGGCCGGGAAATCCTGAAGAGGAGGACGATTTCCGACCCACCTGGACATTAATCAGACTGAACCA
 GTGGCTGGAAATTACTACCCTGTCAACACTCGCATTTACATCACGGACGGGCATATGCAGCTGACCGTGC
 TGACCGACCGTCCCAGGGGGCAGCAGTCTGCTGGATGGCTCATTGGAGCTCATGGTCCACCGACGGCT
 GTTGGTAGATGATGAACGTGGGGTGGCGGAACCTTGCTGGAGACAGATACGGGGGATAAGTTTCGAGGG
 CGCCACCTTGATTTTGTAGTTCTGTGCTGATGCGGCTGCAAGACCCGACTGCTGGCGGAGCAGGAAG
 TCTTGGCCCTCAGGTGGTGTGCTGGCCACGGGGTAGCAGTCCCTATCACTCGCAGGCACCAAAAATGCA
 GTTCTCCGCACTTCGCCGGGAGCTACCTCCGACGGTGCATCTGCTCACCTGGCTCGCTGGGGTCCAAAAG
 ATGCTGCTGCTGCGCTTGGAGCACCAGTTCGCTGTGAAGGAAGATTCAAATCGCAACCTGAGCTCTCCGG
 TGACCTTGAACCTGCAGAACCTGTTCAAGACCTTCACTATCAACTACCTGCAGGAGACCACACTGGCAGC
 CAACCAGCCCCTATCCAGGGTTCCAGGCTCAAGTGGATGACAGATACTGGTCCCATCTCCTACCCTGCT
 CCTTCCCGGTTGGACCTACCTCAATCACACTGCAGCCTATGCAAATCCGTACCTTCTGGCCTCGGTTCA
 AATGGCAGAGACTCATC

ACGCGTACGCGGCCGCTCGAGCAGAACTCATCTCAGAAGAGGATCTGGCAGCAAATGATATCCTGGATT
 ACAAGGATGACGACGATAGGTTTAA

Protein Sequence:

>RR204232 representing NM_199404
 Red=Cloning site Green=Tags(s)

MGTGSLAPGVRAGGNTGWLWMSSCNLGLPVLISIFLIWLLLAAPGAQAAGYKTCPTTKPGLNVHLLPH
 THDDVGLKTVDDQYYYGIMSDVQHASVQYILDSVIYSLLNDRTRRFIYVEMAFFSRWVKQQTINVTQDAVR
 NLVVRQGRLEFVNGGWVWNDEAATHYGAIVDQMTLGLRFLQDTFGSDGLPRVAWHIDPFHGSREQASLFAQ
 MGFDFGFLGRIDYQDKFNRKRKLKMEELWRASASLKPPAADLFTGVLNPNYNPPKDLCDVLCDDPPVVD
 DPTSPEFNANKLVDYFLNLASSQKYYRTNHTVMTMGSDFYENANMWFKNMDKLI RLVNEQQANGSKVH
 VLYSTPSCYLWELNKANLTWTVKEDDFPYADGPHMFWTGYFSSRPALKRYERLSYNFLQVCNQLEALVG
 PEAKVGPYSGDSAPLNEAMAVLQHDAVTGTARQNVVNDYAKQLAAGWGPCEVLVSNALARLSLYKQNF
 SFCREINISICPASQTSEHFRVIIYNPVGKVDLMVRLPVSEGI FLVKDPNDRRISSNVVMVPSAYSPTY
 QWELLFPASVPALGFSIYSVNKMSGHNSHQAHLN TARPCKSKSRVLIENKYIRATFDSDTGLLRKIENLE
 QNISLPPVRQGFYWNASAGDEESPOASGAYIFRPSHRKPLPVSHWAQVTLVKTNLVQEVHQNFSAWCSQV
 IRLYEQQRHLELEWTVGPIPVKDDWGKEVISRFNTPMRTRGQFFTDNSGREILKRRDDFRPTWTLNQTEP
 VAGNYYPVNTRIYITDGHMQLTVLTDRSQGGSSLLDGSLELMVHRLLVDDERGVAEPLLETDTGDKVVRG
 RHLVILSSVSDAAARHRLLAEQEVLAPQVYLAHGGSSPYHSQAPKMQFSALRRELPPQVHLLTLARWGPK
 MLLLRLHQFAVKEDSNRNLSSPVTLNLQNLFKTFTINYLQETTLAANQPLSRVSRLKWMDDTGPISYPA
 PSRLDPTSITLQPMQIRTFILASVQWQLI

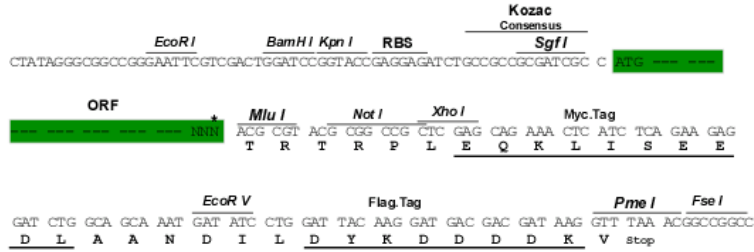
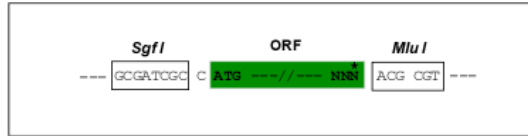
TRTRPLEQKLI SEEDLAANDILDYKDDDDKV

Restriction Sites:

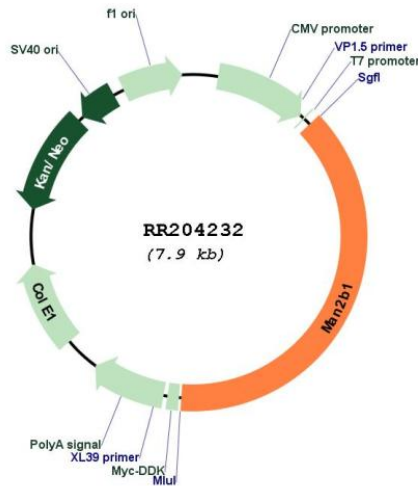
Sgfl-MluI

Cloning Scheme:

Cloning sites used for ORF Shutting:



* The last codon before the Stop codon of the ORF

Plasmid Map:

ACCN: NM_199404

ORF Size: 3027 bp

OTI Disclaimer:

The molecular sequence of this clone aligns with the gene accession number as a point of reference only. However, individual transcript sequences of the same gene can differ through naturally occurring variations (e.g. polymorphisms), each with its own valid existence. This clone is substantially in agreement with the reference, but a complete review of all prevailing variants is recommended prior to use. [More info](#)

OTI Annotation:	This clone was engineered to express the complete ORF with an expression tag. Expression varies depending on the nature of the gene.
Components:	The ORF clone is ion-exchange column purified and shipped in a 2D barcoded Matrix tube containing 10ug of transfection-ready, dried plasmid DNA (reconstitute with 100 ul of water).
Reconstitution Method:	<ol style="list-style-type: none">1. Centrifuge at 5,000xg for 5min.2. Carefully open the tube and add 100ul of sterile water to dissolve the DNA.3. Close the tube and incubate for 10 minutes at room temperature.4. Briefly vortex the tube and then do a quick spin (less than 5000xg) to concentrate the liquid at the bottom.5. Store the suspended plasmid at -20°C. The DNA is stable for at least one year from date of shipping when stored at -20°C.
RefSeq:	<u>NM_199404.1</u> , <u>NP_955436.1</u>
RefSeq Size:	3150 bp
RefSeq ORF:	3030 bp
Locus ID:	361378
Cytogenetics:	19q11
MW:	114.3 kDa
Gene Summary:	mouse homolog is a lysosomal alpha-mannosidase which cleaves alpha-linked mannose residues on glycoproteins [RGD, Feb 2006]