

## Product datasheet for **RR204196**

### Actg2 (NM\_012893) Rat Tagged ORF Clone

#### Product data:

Product Type:	Expression Plasmids
Product Name:	Actg2 (NM_012893) Rat Tagged ORF Clone
Tag:	Myc-DDK
Symbol:	Actg2
Synonyms:	ACTGE; SMGA
Vector:	pCMV6-Entry (PS100001)
E. coli Selection:	Kanamycin (25 ug/mL)
Cell Selection:	Neomycin
ORF Nucleotide Sequence:	>RR204196 representing NM_012893 Red=Cloning site Blue=ORF Green=Tags(s)

TTTTGTAATACGACTCACTATAGGGCGCCGGAATTCGTCGACTGGATCCGGTACCGAGGAGATCTGCC  
GCC**GCGATCGCC**

ATGTGTGAAGAAGAGACCACCGCCTTGTGTGTGACAATGGGTCTGGCCTGTGCAAGGCAGGCTTTGCAG  
GAGACGACGCTCCAGGGCTGTCTTTCCCTCCATTGTGGGCCGCCCTCGGCATCAGGGCGTGATGGTGGG  
AATGGGCCAGAAAGACAGCTATGTGGGGACGAAGCCCAGAGCAAGCGTGGGATCCTGACCTCAAATAC  
CCATTGAGCACGGCATCATCAGAACTGGGATGACATGGAGAAGATCTGGCACCACTCCTTCTACAACG  
AGCTGCGAGTAGCACCAGAAGAGCACCCGACCCCTGCTCACAGAGGCCCCCTAAACCTAAAGCCAAACAG  
GGAGAAGATGACCAGATCATGTTTCAAACCTTCAATGTTCTGCCATGTATGTTGCCATTAAGCTGTG  
CTCTCGCTCTATGCATCTGGCCGACCACAGGCATCGTCTGGATTAGGGGATGGCGTCACCCACAATG  
TCCCCATCTACGAGGGCTATGCACTGCCCCATGCCATCATGCGTCTTGACCTGGCTGGACGGGATCTCAC  
AGACTACCTCATGAAAATTCTCACAGAAAGAGGCTATTCCTTTGTGACCACAGCTGAGAGAGAAATTGTG  
CGAGACATCAAGGAGAAGCTGTGCTACGTAGCCCTGGATTTTGAATGAGATGGCCACGGCGGCTTCGT  
CTTCTCCCTGGAGAAGAGCTACGAGTTGCCCTGATGGGCAGGTCATCACGATTGGCAATGAGCGCTTCCG  
CTGCCCGAGACCCTGTTCCAGCCTTCTTCATTGGCATGGAGTCAGCTGGAATTCATGAGACAACATAC  
AATTCATCATGAAGTGTGACATTGACATCCGCAAGGATTTGTATGCTAACAAATGCTCTCTGGGGCA  
CTACCATGATCCCTGGGATTGCTGACAGGATGCAGAAGGAGATCACAGCCTTGGCTCCCAGCACCATGAA  
GATCAAGATCATCGTCTCCGGAGCGGAAGTACTCAGTCTGGATTGGAGGCTCCATCCTGGCTTCTCTC  
TCCACCTCCAGCAAATGTGGATCAGCAAGCCAGAGTATGATGAAGCGGGGCCCTCCATTGTCCACAGGA  
AATGCTTC

**ACGCGT**ACGCGGCCGCTCGAGCAGAACTCATCTCAGAAGAGGATCTGGCAGCAAATGATATCCTGGATT  
ACAAGGATGACGACGATAAGGTTTAA



[View online »](#)

**Protein Sequence:** >RR204196 representing NM\_012893  
Red=Cloning site Green=Tags(s)

MCEEETALVCDNGSGLCKAGFAGDDAPRAVFPISVGRPRHQVMVGMGQKDSYVGDEAQS~~SRGILTLKY~~  
 PIEHGIIITNWDDMEKIWHHSFYNELRVAP~~EEHPTLLTEAPLNPKANREKMTQIMFETFNVPAMYVAIQAV~~  
 LSLYASGRITGIVLDSGDGVTHNVPIYEGYALPHAIMRLDLA~~GRDLTDYLMKILTERGYSFVTTAEREIV~~  
 RDIKEKLCYVALDFENEMATAASSSSLEKSYELPDGQVITIGNERFRCPE~~TLFQPSFIGMESAGIHETTY~~  
 NSIMKCDIDIRKDLYANNVLSGGTTMYPGIADRMQKEITALAPSTMKIKIIAP~~PERKYSVWIGGSILASL~~  
 STFQQM~~WISKPEYDEAGPSIVHRKCF~~

TRTRPLEQKLISEEDLAANDILDYKDDDDKV

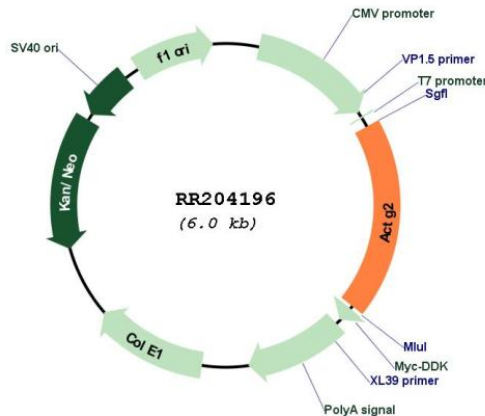
**Restriction Sites:**

Sgfl-MluI

**Cloning Scheme:**



**Plasmid Map:**



**ACCN:**

NM\_012893

<b>ORF Size:</b>	1128 bp
<b>OTI Disclaimer:</b>	The molecular sequence of this clone aligns with the gene accession number as a point of reference only. However, individual transcript sequences of the same gene can differ through naturally occurring variations (e.g. polymorphisms), each with its own valid existence. This clone is substantially in agreement with the reference, but a complete review of all prevailing variants is recommended prior to use. <a href="#">More info</a>
<b>OTI Annotation:</b>	This clone was engineered to express the complete ORF with an expression tag. Expression varies depending on the nature of the gene.
<b>Components:</b>	The ORF clone is ion-exchange column purified and shipped in a 2D barcoded Matrix tube containing 10ug of transfection-ready, dried plasmid DNA (reconstitute with 100 ul of water).
<b>Reconstitution Method:</b>	<ol style="list-style-type: none"><li>1. Centrifuge at 5,000xg for 5min.</li><li>2. Carefully open the tube and add 100ul of sterile water to dissolve the DNA.</li><li>3. Close the tube and incubate for 10 minutes at room temperature.</li><li>4. Briefly vortex the tube and then do a quick spin (less than 5000xg) to concentrate the liquid at the bottom.</li><li>5. Store the suspended plasmid at -20°C. The DNA is stable for at least one year from date of shipping when stored at -20°C.</li></ol>
<b>RefSeq:</b>	<a href="#">NM_012893.1</a> , <a href="#">NP_037025.1</a>
<b>RefSeq Size:</b>	1237 bp
<b>RefSeq ORF:</b>	1131 bp
<b>Locus ID:</b>	25365
<b>UniProt ID:</b>	<a href="#">P63269</a>
<b>Cytogenetics:</b>	4q34
<b>MW:</b>	41.9 kDa
<b>Gene Summary:</b>	may play a role in smooth muscle function [RGD, Feb 2006]