

## Product datasheet for **RR204167**

### Ift81 (NM\_199120) Rat Tagged ORF Clone

#### Product data:

Product Type:	Expression Plasmids
Product Name:	Ift81 (NM_199120) Rat Tagged ORF Clone
Tag:	Myc-DDK
Symbol:	Ift81
Synonyms:	Cdv-1; Cdv1
Mammalian Cell Selection:	Neomycin
Vector:	pCMV6-Entry (PS100001)
E. coli Selection:	Kanamycin (25 ug/mL)



[View online »](#)

**ORF Nucleotide Sequence:**

>RR204167 representing NM\_199120  
 Red=Cloning site Blue=ORF Green=Tags(s)

TTTTGTAATACGACTCACTATAGGGCGGCCGGGAATTCGTCGACTGGATCCGGTACCGAGGAGATCTGCC  
 GCC**CGCATCGCC**

ATGAGTGACCAAATCAAATTCATCGTGGACAGCCTCAATAAGGAGCCTTTTAAGAAGAACTATAATTTAA  
 TCACATTTGATTCTTTGGGACCAATGCAACTATTACAAGTTCTCAATGATGTCCTGGCTGAGATAGACCC  
 CAAGCAAGACGTTGATATCAGAGAGGAGACGCCGGAGCAGACAGCCAAGCGCATGTTGAGCCTTCTTGGT  
 ATCCTGAAGTACAAACCTCCGGGGAATGCCACAGACATGAGCACCTTCGCCAGGGTTTGGTGATCGGGA  
 GTAACCTGTCTATCTACCCGGTGTCCACTGGCTCCTCCAGCGGAGCAGTGAAGTAAAGAAAAGGGCGTA  
 TTTAGCTCGCTTCTTAATAAAGCTGGAGGTGCCAGCGAGTTTCTCCAAGATGAAACCGTGGCTGACACC  
 AACAAACAGTATGAAGAGCTGATGGAAGCCTTCAAAGCCCTGCATAAAGAGTGTGAGCAGCTCAAAACAT  
 CTGGATTCTCCACAGCGGAGATAAGAAGGGATATCAGCGCAATGGAGGAGGAGAAAGACCAGCTCATGAA  
 GAGAGTTGAACGGTTGAAGAAGAGGGTGGAGACTGTCCAGAACCATCAGCGAATGCTTAAAAAGCAAGA  
 CAGCTTCGGGTTGAGAAAAGAGAGAGAAGAGTTTCTTGCTCAACAGAAGCAGGAACAAAAGAAATCAGCTGT  
 TTCATGCGGTGCAGAGATTGCAAAGAGTGCAAAACCAGCTGAAGAGTATGCGGCACCGCGGACGAGACGC  
 CAAGCCTGAGAGTTTAAATGAAGAGGCTAGAGGAGGAGATAAAATTTAATTCATATATGGTCACTGAAAA  
 TTTCCAAAAGAATTAGAAAGCAAGAAAAAGGAATTACACTTTTTACAAAAAGTGGTTTCTGAGCCAGCTA  
 TGGGCCACTCTGACCTTCTTGAACCTTGAAGTCTAAAGTCAATGAAGTAAACGCAGAGATCAATCAGTTGAT  
 TGAGAAAAAATGATGAGAAACGAGCCAATAGAAGGCAAGCTCTCACTGTACAGGCAACAGGCGTCCATC  
 ATTTCTCGTAAGAAAGAGGCCAAAGCTGAGGAGCTGCAGGAGACCAAGGAGAAGCTGGCCAGCCTCGAGA  
 GAGAGGTGTCTGTGAAGACAAACCAGACCCGGGAATTTGACGGCACTGAGGTTCTGAAGGGAGATGAGTT  
 CAAGAGATACGTACGTAACCTTCGGAGCAAAAGCACAGTTTTTCAAAAAGAAAGCACCAGATAATAGCTGAG  
 TTTAAGGCTGAATTTGGCCTCTTGACAGAGGACAGAAGAAGTCTGAAGCAACGTCAGGAAACCATTCAAC  
 ATCAACTGCGAACCATTTGAAGAGAAGAAGGGCATCTCTGGTTACAGCTACACCCAAGAGGAGCTTGAGAG  
 AGTGTGCGCCCTGAAGAGCGAGGTTGACGAGATGAAAGGCCGGACCCTGGACGACATGTCAGAGATGGTA  
 AAAAACTGAATTCCTTGGTATCAGAAAAGAAGTCAAGTCTTAGCCCCAGTTATAAAAAGAACTACGGCAAT  
 TGCGTCAGAAATGTCAGCTAACCCAGGAGTGTGATGAGAAGAGAACCAGTATGATAGCTGTGCGGCAGG  
 CCTTGAAAGCAACCGTCCAAATTAGAGCAGGAAGTACGAGGACTCCGTGAAGAATGTCTTCAAGAAGAA  
 AGTAAATACCATTATACAACTGCATGATTAAGAACCTAGAAGTTCAGCTTCGCCGAGCCACTGATGAGA  
 TGAAGGCGTACGTCTTCTGATCAACAAGAAAAGAGGAAAGCAATTAGGGAACAGTATACCAAAAATAT  
 TACTGAGCAAGAAAACCTGGGCAAGAACTTCGGGAAAAACAAAAGGCTGTTTCGAGAAAAGTACCGTCCC  
 AACATGAAGCAAGCGAAGATGTGGCGGATCTTGAACAACTGATGGAATGCAAAAACAGTGCTTTCTGA  
 AGCAGCAGAGCCAGCCTCCATCGGCCAGGTAATTCAGGAGGGCGGAGAGGACCGGCTGGTTCTC

**ACGCGT**ACGCGGCCGCTCGAGCAGAACTCATCTCAGAAGAGGATCTGGCAGCAATGATATCCTGGATT  
 ACAAGGATGACGACGATAAGGTTTAA

**Protein Sequence:** >RR204167 representing NM\_199120  
Red=Cloning site Green=Tags(s)

```
MSDQIKFIVDSL NKEPFKKNYNLITFDSL GPMQLLQVLNDVLA EIDPKQDV D IREETPEQTAKRML SLLG
ILKYKPPGNATDMSTFRQGLVIGSKPVIYPVLHWLLQRSELKKRAYLARFLIKLEVPSEFLQDET VADT
NKQYEELMEAFKALHKECEQLKTSGFSTAEIRRDISAMEEEKDQLMKRVERLKKRVETVQNHQRMLKIAR
QLRVEKERE EFLAQQQE QKNQLFHAVQRLQRVQNQLKSMRHAADAKPESLMKRLEEEIKFN SYMVTEK
FPKELESKKKELHFLQKV VSEPAMGHS D LLELESKVNEVNAEINQLIEKKMMRNEPIEGKLSLYRQQASI
ISRKKEAKAEELQETKEK LASLEREVS VKTNQTREFDGTEVLKGDEFKRYVSKLRSKSTVFKKKHQIIAE
FKAEFGLLQRTEELLKQRQETIQHLR TIEEKKGISGYSY TQEELERSALKSEVDEMKGRTLDDMSEMV
KKLNSLVSEKKSALAPVIKELRQLRQKCQLTQECDEKRTQYDSCAAGLESNRSKLEQEV RGLREECLQEE
SKYHYTNCMIKNLEVQLRRATDEMKA YVSSDQQEKRKAIREQYTKNITEQENLGKKLREKQKAVRESHGP
NMKQAKMWRDLEQLMECKKQCF LKQQSPASIGQVIQEGGEDRLVL
```

TRTRPLEQKLISEEDLAANDILDYKDDDDKV

**Restriction Sites:**

SgfI-MluI

**Cloning Scheme:**



**ACCN:** NM\_199120

**ORF Size:** 2025 bp

**OTI Disclaimer:** The molecular sequence of this clone aligns with the gene accession number as a point of reference only. However, individual transcript sequences of the same gene can differ through naturally occurring variations (e.g. polymorphisms), each with its own valid existence. This clone is substantially in agreement with the reference, but a complete review of all prevailing variants is recommended prior to use. [More info](#)

**OTI Annotation:** This clone was engineered to express the complete ORF with an expression tag. Expression varies depending on the nature of the gene.

**Components:** The ORF clone is ion-exchange column purified and shipped in a 2D barcoded Matrix tube containing 10ug of transfection-ready, dried plasmid DNA (reconstitute with 100 ul of water).

**Reconstitution Method:**

1. Centrifuge at 5,000xg for 5min.
2. Carefully open the tube and add 100ul of sterile water to dissolve the DNA.
3. Close the tube and incubate for 10 minutes at room temperature.
4. Briefly vortex the tube and then do a quick spin (less than 5000xg) to concentrate the liquid at the bottom.
5. Store the suspended plasmid at -20°C. The DNA is stable for at least one year from date of shipping when stored at -20°C.

**RefSeq:** [NM\\_199120.1](#), [NP\\_954551.1](#)

**RefSeq Size:** 2666 bp

**RefSeq ORF:** 2028 bp

**Locus ID:** 373066

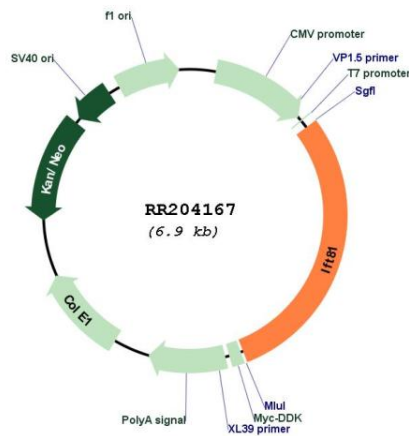
**UniProt ID:** [P83829](#)

**Cytogenetics:** 12q16

**MW:** 79 kDa

**Gene Summary:** mouse homolog is a downregulated gene in the hypertrophied ventricle of carnitine-deficient juvenile visceral steatosis mice [RGD, Feb 2006]

### Product images:



Circular map for RR204167