

Product datasheet for **RR204151**

Tgfbr3 (NM_017256) Rat Tagged ORF Clone

Product data:

Product Type:	Expression Plasmids
Product Name:	Tgfbr3 (NM_017256) Rat Tagged ORF Clone
Tag:	Myc-DDK
Symbol:	Tgfbr3
Synonyms:	betaglycan
Vector:	pCMV6-Entry (PS100001)
E. coli Selection:	Kanamycin (25 ug/mL)
Cell Selection:	Neomycin



[View online »](#)

**ORF Nucleotide
Sequence:**

>RR204151 representing NM_017256
 Red=Cloning site Blue=ORF Green=Tags(s)

TTTTGTAATACGACTCACTATAGGGCGGCCGGAATTCGTCGACTGGATCCGGTACCGAGGAGATCTGCC
 GCC**CGGATCGCC**

ATGGCAGTGACATCCCACCACATGATCCCGGTGATGGTTGTCCTGATGAGCGCCTGCCTGGCCACCGCCG
 GTCCAGAGCCCAGCACCCGGTGTGAACTGTCAACCAATCAACGCCTCTACCCAGTCCAGGCCTTGATGGA
 GAGCTTACCCTTCTGTCTGGCTGTGCCAGCAGAGGCACCACCGGCTGCCAAGGAGGTCCATGTCCTA
 AACCTCCGAAGTACAGATCAGGGACCAGGCCAGCGGCAGAGAGAGGTTACCCTGCACCTGAACCCATTG
 CCTCGGTGCACACTACCACAAACCTATCGTGTTCCTGCTCAACTCCCCCAGCCCTGGTGTGGCATCT
 GAAGACGGAGAGACTGGCCGCTGGTGTCCCAGACTCTTCTGGTTTCAGAGGTTCTGTGGTCCAGTTT
 CCATCAGGAACTTCTCCTTGACAGCAGAAACAGAGGAAAGGAATTTCCCTCAAGAAAATGAACATCTGC
 TGCCTGGGCCAAAAGGAATATGGAGCAGTGACTTCGTTACCCGAACCTAAGATAGCAAGAAACATCTA
 TATTAAGTGGGAGAAGATCAAGTGTTCCTCCTACGTGAACATAGGGAAGAATTTCTCTCACTCAAT
 TACCTTGGCGAGTACCTCAACCCAAAGCCGCCGAAGGTTGTGTCTGCCAGTCAACCCATGAAAAGG
 AAGTACACATCATCGAGTTAATTACCCCAAGCTCGAACCCCTACAGCGCTTCCAGGTGGATATAATAGT
 TGACATACGACCTGCTCAAGAGGATCCCAGGTGGTCAAAAACCTTGTCCTGATCTTGAAGTGCAAAAAG
 TCTGTCAACTGGGTGATCAAGTCTTTGACGTCAAGGAAACTTGAAAGTCATTGCTCCCAACAGTATCG
 GCTTTGGAAAAGAGAGTGAACGATCCATGACAATGACCAATGGTAAGAGATGACATCCCTTCCACCCA
 AGAGAACTGATGAAGTGGGCACTGGACAATGGCTACAGGCCAGTGACGTATACACAATGGCTCCCGTG
 GCTAATAGATTTTCTCGCTTGAGAACACAGGAGATGAGAGATGAGGAAGTCCACACCATTCCTC
 CTGAGCTTCGTATCCTGCTGGACCTGACCACCCGCCCTGGACAACCCACTTCCAGGAGGGG
 AAGCCCAATGGTGGTCTCCCTTTCCATTCCTGGATATCCCCAGGAGAGGCTGGAAGGAGGGCGAAGAT
 AGGATCCCCCGGCCAAAGCAGCCATCGTTCACAGTGTCAACTGCTTCTGACCACCGAGAACCAGAAG
 AAGTGCAAGGGGGCGTGGACATCGCCCTGTGAGTCAAATGTGACCATGAAAAGATGGTCTGGTGTAGA
 CAAAGACTCTTCCAGACCAATGGTACTCAGGGATGGAGCTCACCTGTTGGATCCTTCGTGTAAGGCC
 AAAATGAATGGTACTCACTTTGTTCTCGAGTCTCCCTGAATGGTGTGGTACTCGACATCGGAGGTCGA
 CCCCAGGATGGTGTGGTTACTATAACTCTATTGTGGTGCAGGCTCCGTCCTGGGATAGCAGTGGCTG
 GCCTGATGGCTATGAAGACTTGGAGTCAAGCGATAATGGATTTCTGGAGACGGGATGAAGGAGAACT
 GCCCCCTGAGCCGAGCTGGAGTGGTGGTGTAACTGCAGCTTGCAGCAGCTGAGGAATCCAGTGGCT
 TCCAGGGCCAGCTCGATGGAATGCTACCTTCAACATGGAGCTGTATAACACAGACCTTTCTGGTGGC
 CTCCCCAGGGTCTTCTGTGGCAGAGAACGAGCATGTTTATGTTGAGGTGTCTGTCCAAGGCTGAC
 CAAGATCTGGGATTCGCCATCCAAACCTGCTTCTCTCCTCACTCCAACCCAGACAGAATGTCTGATT
 ACACCATCATCGAGAATCTGTCCGAAAGACGACTCTGTGAAGTTCTACAGCTCCAAGAGAGTGCACCT
 TCCCATCCCGATGCTGAGGTGGACAAGAAGCGCTTCAGCTTCTGTTCAGTCTGTGTTCAACACCTCC
 CTGCTCTTCTGCACTGCGAGTTGACTCTGTGCTCCAGGAAGAAGGGCTCCCTGAAGCTGCCGAGGTGTG
 TGACTCCTGACGACGCTGCACCTCTCTCGATGCCACCATGATCTGGACCATGATGCAGAATAAGAAGAC
 ATTCAACAAGCCCTGGCTGTGGTCTCCAGGTAGACTATAAAGAAAATGTTCCAGCACTAAGGATTCC
 AGTCCAATTCCTCCTCCTCCACAGATTTCCATGGCCTGGACAGCTCACCGTATGGCATTGTCAT
 TTGACGATTTGTGATCGGAGCGCTCCTGACGGGGCCTTGTGGTACATCTACTCCACACAGGGGAGAC
 AGCACGAAGGCAGCAAGTCCCTACCTCGCCGCCAGCCTCGGAGAACAGCAGCGGGCCACAGCATCGGC
 AGCACTCAGAGTACCCCTGCTTAGCAGCAGCACAGCC

ACCGTACGGGGCGCTCGAGCAGAACTCATCTCAGAAGAGGATCTGGCAGCAATGATATCTGGATT
 ACAAGGATGACGACGATAAGGTTTAA

Protein Sequence: >RR204151 representing NM_017256
Red=Cloning site Green=Tags(s)

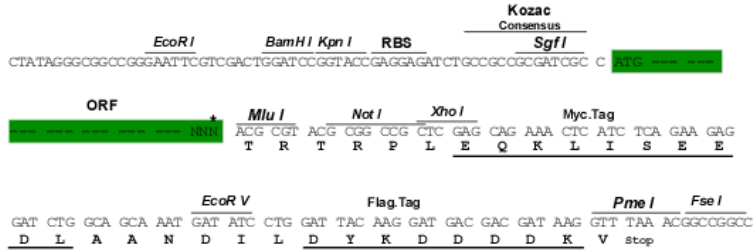
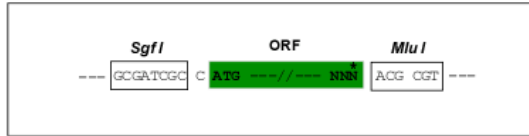
MAVTSHHMIPVMVVLMSACLATAGPEPSTRCELSPINASHPVQALMESFTVLSGCASRGTTGLPREVHVL
NLRSTDQGPGRQREVTLHLNPIASVHTHHKPIVFLNSPQPLVWHLKTERLAAGVPRLFLVSEGSVVQF
PSGNFSLTAETEERNFPQENEHLLRWAQKEYGAVTSFTELKIARNIYIKVGEDQVFPPTCNIGNFLSLN
YLAEYLQPKAAEGCVLPSQPHEKEVHIIELITPSSNPYSAFQVDIIVDIRPAQEDPEVVKNLVLILKCKK
SVNWVIKSFDVKGNLKVIA PNSIGFGKESERSMTMVKLVRDDIPSTQENLMKWALDNGYRPVTSYTMAPV
ANRFHLRLENNEEMRDEEVHTIPPELRILLDPDHPPALDNPLFPGEGSPNGGLPFPFPDIPRRGWKEGED
RIPRPKQPIVPSVQLLPDHREPEEVQGGVDIALSVKCDHEKMMVAVDKDSFQTNGYSGMELTLDPSCA
KMNGTHFVLESPLNGCGTRHRRSTPDGVVYNSIVVQAPSPGDSSGWPDPGYEDLESGDNGFPGDGEGET
APLSRAGVVVFNCSLRQLRNPSGFQGLDGNATFNMELYNTDLFLVPSGVFVSAENEHVYVEVSVTKAD
QDLGFAIQTCLSPYSNPDRMSDYTI IENICPKDDSVKFYSSKRVHFPIPHAEVDKRFSLFKSVFNTS
LLFLHCELTLCSRKKGSLKLRPCVTPDDACTSLDATMIWTMMQNKFTFKPLAVVLQVDYKENVPSTKDS
SPIPPPPQIFHGLDTLVMGIAFAAFVIGALLTGALWYIYSHGETARRQVPTSPPASENSSAHSIG
STQSTPCSSSTA

TRTRPLEQKLI SEEDLAANDILDYKDDDDKV

Restriction Sites: Sgfl-MluI

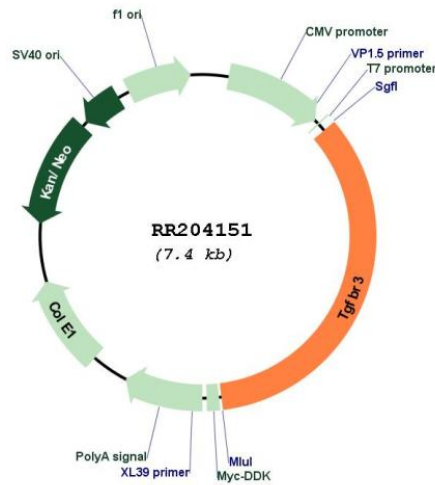
Cloning Scheme:

Cloning sites used for ORF Shuttling:



* The last codon before the Stop codon of the ORF

Plasmid Map:



ACCN:	NM_017256
ORF Size:	2559 bp
OTI Disclaimer:	The molecular sequence of this clone aligns with the gene accession number as a point of reference only. However, individual transcript sequences of the same gene can differ through naturally occurring variations (e.g. polymorphisms), each with its own valid existence. This clone is substantially in agreement with the reference, but a complete review of all prevailing variants is recommended prior to use. More info
OTI Annotation:	This clone was engineered to express the complete ORF with an expression tag. Expression varies depending on the nature of the gene.
Components:	The ORF clone is ion-exchange column purified and shipped in a 2D barcoded Matrix tube containing 10ug of transfection-ready, dried plasmid DNA (reconstitute with 100 ul of water).
Reconstitution Method:	<ol style="list-style-type: none">1. Centrifuge at 5,000xg for 5min.2. Carefully open the tube and add 100ul of sterile water to dissolve the DNA.3. Close the tube and incubate for 10 minutes at room temperature.4. Briefly vortex the tube and then do a quick spin (less than 5000xg) to concentrate the liquid at the bottom.5. Store the suspended plasmid at -20°C. The DNA is stable for at least one year from date of shipping when stored at -20°C.
RefSeq:	NM_017256.1 , NP_058952.1
RefSeq Size:	3931 bp
RefSeq ORF:	2562 bp
Locus ID:	29610
UniProt ID:	P26342
Cytogenetics:	14p22
MW:	94.1 kDa
Gene Summary:	binds TGF-beta; may regulate TGF-beta receptor type II expression or ligand-binding activity [RGD, Feb 2006]