

Product datasheet for **RR204146**

Veph1 (NM_001014171) Rat Tagged ORF Clone

Product data:

Product Type:	Expression Plasmids
Product Name:	Veph1 (NM_001014171) Rat Tagged ORF Clone
Tag:	Myc-DDK
Symbol:	Veph1
Synonyms:	RGD1308217
Vector:	pCMV6-Entry (PS100001)
E. coli Selection:	Kanamycin (25 ug/mL)
Cell Selection:	Neomycin



[View online »](#)

**ORF Nucleotide
Sequence:**

>RR204146 representing NM_001014171
 Red=Cloning site Blue=ORF Green=Tags(s)

TTTTGTAATACGACTCACTATAGGGCGGCCGGGAATTCGTCGACTGGATCCGGTACCGAGGAGATCTGCC
 GCC**CGGATCGCC**

ATGCACCAACTTTTCAGATTGGTTTTGGGACAAAAAGATCTTTCAAGAGCTGGGGACCTCTTCTCTTTAG
 ATGACGCTGAGATAGAAGACAGCCTGACAGAAGCTTTGGAGCAGATTAAGTAATTAGCTCATCTTTGGA
 TTATCAAATAAACAATGACCAGGCAGTGGTTGAAATCTGTATCACGAGGATTACAACAGCCATCAGA
 GAGACGGAATCCATTGAAAAGCACGCCAGGGCCCTGGTGGGACTGTGGGATTCTGCTTGGAGCACAACC
 TGAGACCTGCAGGGAAAGACGAAGATACTCCACACGCTAAAATCGCATCCGATATCATGAGTTGTATCTT
 ACAAAATTACAACCGACCCCTGTGATGGTCTTAGCTGTACCCATCGCAGTGAAATTCCTCCACAGAGGC
 AGCAAGGAGCTGTGTAGGAACATGTCCAACCTACCTGTCTTGGCTGCCATACCAAGGCCGATCTCTGG
 CTGACCACACTGAAGGGATAGTAAAGAGCATACTCCAAGGAAATGCCATGCTACTGAGGGTGTGCCTGC
 TGTGTATGAAAAGCAGCCCCAACCAATCAACAGGCACCTGGCAGAACTCTGGCCTTGATGTCTCAATTG
 GAGCAGACAGAACAGTACCATCTACTACGGCTTCTCCATGTAGCAGCAAAGAGAAAAGATGTGGAGGTGG
 TTCAGAAATGTGTTCTTTCCTGATCAGAAACCTGAAGGAGTCAACCTATAATGACATCATCTGAAACAT
 CCTCATAGAAATAGCAGGCCATGAGCCGCTGGCCTTGAACAGTTTTCTCCAATGCTGAAAGAGATTGCA
 GAGCAATCCCCTACCTCACTGGACAAATGGCGAGGATCTTTGGTGTCTTGGGCATGTGGATGAAGAGA
 GAGCCAGGAGCTGCCTACGGTACCTGGTGGCCAGCTGGTAACATGGAGCATTCAATCCACCACATTCT
 CCTGCTGGAAATTAAGAGTCTCACAGATGCCTTCTCTCCATTCTGGGCCCTCACAGCAGGGACATCTTC
 CGAATGAGCAACAGCTTCAACAACATCGCAAGCTGCTTCCCAGCAACTGGAAAACAGCAAGGCCGAGA
 GTGGCAGGAGAAGAACCAGCACTGAAGTTAGCTTCTGAGAAATTCAGAGAACCAGCAAGCATTGAGGC
 TAAAAGTGAAGACCACGAAAAAATCCAAGTTAAAATCCAGGCCTTGAAGATAAAAATAAATGCTGAGAGC
 CATAACCCCTGGCTCTGTCCGGAGATACAGTTTAGACCAGTCTCCAAGGAAGAACGAAAAACGTTTCGAT
 TTAGCAGGTCCAGAAGTTTGGCTTTGAATACTGTGCTCACAAACAGTGTGAATGTGGAAGACGGAGAAAT
 CGAAGGAAAGACAGGAATGCATGCCAGCATCTCGCTTTCAGAAATAGACCCACCTGGCCACGGAATTGGC
 AAGGTGCCCTTTAAGACGGATACCCATGGATCACAGCTGAGAAATTCCTCAGCTTACACCCAAGTATTA
 TACACAGTGAACCAGAAAATATGCCTGAACTTTTAAAGAAAACGTCGAAGAAGAAATTCAGAGGGCGC
 CATAAGTCTGTGGAATACCAAGATAAGCTCTACTTACACTTAAAGGAAAACCTCAGCAAAGTGAAGGCA
 TACGCCCTTGGAAATCGCAAAAAAAGTCCAATCCAGACCAGTGCACCATTGAAGATAATACGAGAAGCT
 GTGTGGCAAAGCTGTTCTTTACGTGTTCTGTTAAAGGGTCACTACTGCCTATACAGCAAGTCCAGTTTAC
 CCTGTGACAGCAAGCCCCCAGCCATGGATTGAGATCATGTTTCTCTTCCAACAGAGCCTGTTTCTGAG
 CCCCTGTCCATTGAGTGGCTCGGTGCAGTTCCTCAAGGCCCTATGGGAGAAGACACAGGGCACAGGAA
 CCCACAGCTTTGAGGTCGCCATGACAGAGTCCACATTTCCACAGCAGAAGGATCTGGACCAGCTTACGCT
 CCATCTGGAAGAAGTGGGTTCTTTGATGTGTTTGGCTTCAGCGAAACAGCAGGGGCATGGCAATGCTTC
 ATGTGTAACAACCCCGAAAAGGCAACTGTTATAAATCAAGATGGCCAGCCTCTCATTGAAGGAAAGCTTA
 AGGAGAAAACAGTGAAGTGGAAAGTTCATCAAGAGGTGAAAACACGTTATTTTACTGGCTGAAAACCA
 ACTTCTGTTTCAAAGGGGAAAATCTGACGACCCCGATGATTCCTCCGATAGAACTCAGCAAAGTACAGAGC
 GTGAAAGCTGTGGCCAAGAAGCGTCGGGACCGCTCTCTCCCTCGGGCTTTTGAATCTTACAGACAATA
 AGACCTATGTTTTCAAAGCCAAGGATGAGAAAAACGACAGAGGAGTGGCTGCAAGTGCATCAACGTGGCGT
 GGCCAGGCAAAGGAGAGGGAGACCGAGAAGTAAACCACATATCTG

ACGCGTACGCGGCCGCTCGAGCAGAACTCATCTCAGAAGAGGATCTGGCAGCAAATGATATCTGGATT
 ACAAGGATGACGACGATAAGGTTTAA

Protein Sequence: >RR204146 representing NM_001014171
 Red=Cloning site Green=Tags(s)

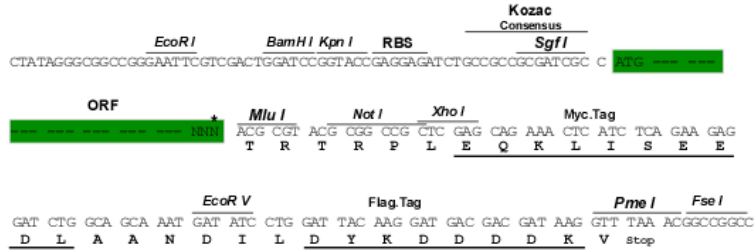
MHQLFRLVLGQKDL SRAGDLFSLDDAEIEDSLTEALEQIKVISSSLDYQTNNNDQAVVEICITRITTAIR
 ETESIEKHARALVGLWDSLEHNL RPAGKDEDPHAKIASDIMSCILQYNRTPVMVLAVPIAVKFLHRG
 SKELCRNMSNYLSLAAITKADLLADHTEGIVKSILQGNAMLLRVLPVYVEKQPQPINRHLLAELLALMSQL
 EQTEQYHLLRLLHVAARKKDVEVVQKCVFPIRNLKESTYNDIILNILEIAGHEPLALNSFLPMLKEIA
 EQFPYLTGQMARIFGAVGHVDEERARSCLRYLVSQLANMEHSFHHILLLEIKSLTDAFSSILGPHSRDIF
 RMSNSFTNIAKLLSRQLENSKAESGRRRTGTEVSFPEKFRPKTMEPKSEDHEKLQVKIQAFEDKINAES
 HTPGSVRRYSLDHVSKEERKNVRF SRSRSLALNTVLTNSVNVEDGEIEGKTGMHASICLSEIDPPGHGIG
 KVPFKTDTHGSQLRNSSASHPSIIHSEPENMPETFKENVQEEIPEAAISPVEYQDKLYLHLKENLSKVKA
 YALEIAKKVPIPDQCTIEDNTRSCVAKLFFTC SLKGHYCLYSKSSFTLVSQAPQPWIQIMFLFQQSLFPE
 PLSIQSGSVQFLKALWEKTQGTGTHSFEVAMTESTFPQQKDLQQLHLEEVRFDFVGFSETAGAWQCF
 MCNNPEKATVINQDQPLIEGKLEKQVRWKF IKRWKTRYFTLAGNQLLFQKKGSDPDSPIELSKVQS
 VKAVAKRRDRSLPRAFEIFTDNKTYVFKAKDEKNAEELWQCINVALAQAKERESREVTTYL

TRTRPLEQKLI SEEDLAANDILDYKDDDDKV

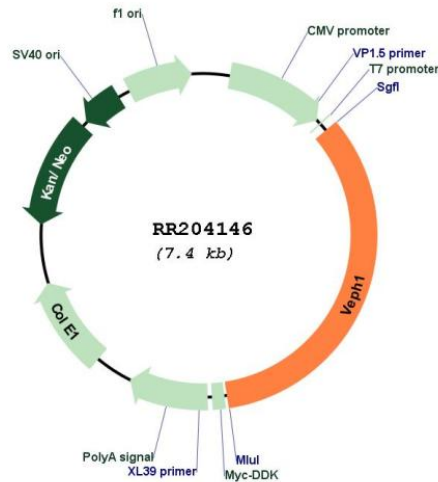
Restriction Sites: Sgfl-Mlul

Cloning Scheme:

Cloning sites used for ORF Shuttling:



* The last codon before the Stop codon of the ORF

Plasmid Map:


ACCN: NM_001014171

ORF Size: 2496 bp

OTI Disclaimer: The molecular sequence of this clone aligns with the gene accession number as a point of reference only. However, individual transcript sequences of the same gene can differ through naturally occurring variations (e.g. polymorphisms), each with its own valid existence. This clone is substantially in agreement with the reference, but a complete review of all prevailing variants is recommended prior to use. [More info](#)

OTI Annotation: This clone was engineered to express the complete ORF with an expression tag. Expression varies depending on the nature of the gene.

Components: The ORF clone is ion-exchange column purified and shipped in a 2D barcoded Matrix tube containing 10ug of transfection-ready, dried plasmid DNA (reconstitute with 100 ul of water).

Reconstitution Method:

1. Centrifuge at 5,000xg for 5min.
2. Carefully open the tube and add 100ul of sterile water to dissolve the DNA.
3. Close the tube and incubate for 10 minutes at room temperature.
4. Briefly vortex the tube and then do a quick spin (less than 5000xg) to concentrate the liquid at the bottom.
5. Store the suspended plasmid at -20°C. The DNA is stable for at least one year from date of shipping when stored at -20°C.

RefSeq: [NM_001014171.1](#), [NP_001014193.1](#)

RefSeq Size: 3068 bp

RefSeq ORF: 2499 bp

Locus ID: 361954

UniProt ID: [Q5PQS3](#)

Cytogenetics: 2q31

MW: 94.5 kDa

Gene Summary: Interacts with TGF-beta receptor type-1 (TGFBR1) and inhibits dissociation of activated SMAD2 from TGFBR1, impeding its nuclear accumulation and resulting in impaired TGF-beta signaling. May also affect FOXO, Hippo and Wnt signaling.[UniProtKB/Swiss-Prot Function]