

## Product datasheet for **RR204142**

### **Pbk (NM\_001079937) Rat Tagged ORF Clone**

#### Product data:

**Product Type:** Expression Plasmids  
**Product Name:** Pbk (NM\_001079937) Rat Tagged ORF Clone  
**Tag:** Myc-DDK  
**Symbol:** Pbk  
**Vector:** pCMV6-Entry (PS100001)  
**E. coli Selection:** Kanamycin (25 ug/mL)  
**Cell Selection:** Neomycin  
**ORF Nucleotide Sequence:** >RR204142 representing NM\_001079937  
**Red=Cloning site Blue=ORF Green=Tags(s)**

TTTTGTAATACGACTCACTATAGGGCGGCCGGAATTCGTCGACTGGATCCGGTACCGAGGAGATCTGCC  
GCC**CGATCGCC**

ATGGAAGGAATCAGTAATTTCAAGACGCCAAACAATTATCTGAAAAAGGAAATCTGTATTATGTTCAA  
CTCCATGTGTAATATCCCTGCCTCTCCATTTATGCAGAAGCTCGGCTTTGGGACTGGGGTCAGTGTTTA  
CCTAATGAAAAGATCTCCGAGAGGGTTGTCCATTCTCCTTGGGCTGTGAAAAAGATAAAATCCTTTATGC  
GATGATCATTATCGAACTGTGTATCAGAAGAGACTAACTGATGAAGCTAAGATTTTAAAAACCTTAATC  
ACCCAAACATTGTAGGCTATCGTGCTTTTACTGAAGCCAGTGATGGTAGTCTGTGCCTTGCTATGGAGTA  
TGGAGGTGAAAAGTCTCTGAATGACTTAATAGAAGAGCGGAACAAGACAGTGGAAGTCCTTTCCAGCA  
GCTGTAATTCTCAGAGTTGCTTTGCACATGGCAAGAGGGCTAAAGTATCTGCATCAGGAAAAAGAGCTGC  
TGCATGGAGACATAAAGTCTTCAAATGTTGAATTAAGGTGACTTTGAAACAATAAAACTGTGATGT  
AGGAGTCTCTGCCATTGGATGAAAATATGACTGTGACTGATCCTGAGGCCTGTTATATTGGTACTGAG  
CCATGGAACCCAAAGAAGCATTGGAGGAAAATGGCATTATTACTGACAAGGCAGATATGTTTGCTTTTG  
GCCTTACTCTTTGGGAAATGATGACTTTATGTATTCCACACATCAACCTCCAGATGATGATGATGATGA  
AGATGCAACATTTGATGAGAGTGACTTCGATGATGAAGCTTACTATGCAGCTCTGGGACAAAGACCATCC  
ATCAATATGGAAGAACTGGATGAATCCTACCAGAAGGTCATTGAACTCTTCTGTGTGTGACTAATGAGG  
ATCCTAAAGATCGCCATCTGCTGCACACATCGTTGAAGCTTTGGAAGTATAGTGCCAATGTTGTGGTCT  
AAGCTCGAAGCATAGCTTGTATGGGAAGTGT

**ACGCGT**ACGCGGCCGCTCGAGCAGAACTCATCTCAGAAGAGGATCTGGCAGCAATGATATCCTGGATT  
ACAAGGATGACGACGATAAGGTTTAA



[View online »](#)

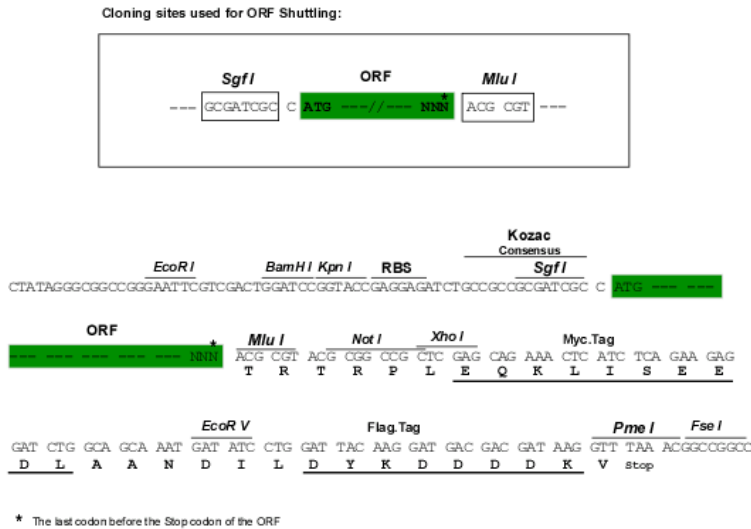
**Protein Sequence:** >RR204142 representing NM\_001079937  
 Red=Cloning site Green=Tags(s)

MEGISNFKTPNKLSEKRKSVLCSTPCVNIPASPFMQKLGFGTGVSVYLMKRSPRGLSHSPWAVKKNINPLC  
 DDHYRTVYQKRLTDEAKILKNLNHPNIVGYRAFTEASDGLCLAMEYGGEKSLNDLIEERNKDSGSPFPA  
 AVILRVALHMARGLKYLHQEKLLHGDIKSSNVVIKGFETIKICDVGVSPLDENMTVTDPEACYIGTE  
 PWKPKEALEENGIITDKADMFAFGLTLWEMMTLCIPHINLPDDDDDEDATFDESDFDDEAYYAALGTRPS  
 INMEELDESYQKVIELFCVCTNEDPKDRPSAAHIVEALELDGQCCLSSKHSLYGNC

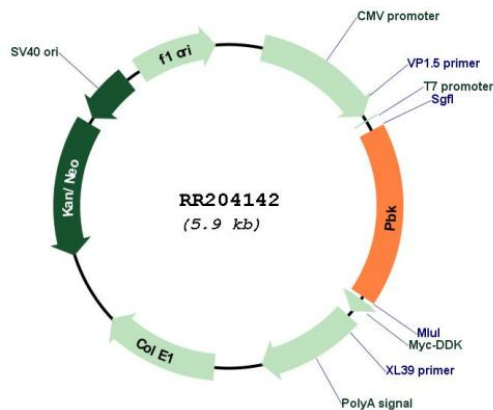
TRTRPLEQKLISEEDLAANDILDYKDDDDKV

**Restriction Sites:** SgfI-MluI

**Cloning Scheme:**



**Plasmid Map:**



**ACCN:** NM\_001079937

<b>ORF Size:</b>	1011 bp
<b>OTI Disclaimer:</b>	The molecular sequence of this clone aligns with the gene accession number as a point of reference only. However, individual transcript sequences of the same gene can differ through naturally occurring variations (e.g. polymorphisms), each with its own valid existence. This clone is substantially in agreement with the reference, but a complete review of all prevailing variants is recommended prior to use. <a href="#">More info</a>
<b>OTI Annotation:</b>	This clone was engineered to express the complete ORF with an expression tag. Expression varies depending on the nature of the gene.
<b>Components:</b>	The ORF clone is ion-exchange column purified and shipped in a 2D barcoded Matrix tube containing 10ug of transfection-ready, dried plasmid DNA (reconstitute with 100 ul of water).
<b>Reconstitution Method:</b>	<ol style="list-style-type: none"><li>1. Centrifuge at 5,000xg for 5min.</li><li>2. Carefully open the tube and add 100ul of sterile water to dissolve the DNA.</li><li>3. Close the tube and incubate for 10 minutes at room temperature.</li><li>4. Briefly vortex the tube and then do a quick spin (less than 5000xg) to concentrate the liquid at the bottom.</li><li>5. Store the suspended plasmid at -20°C. The DNA is stable for at least one year from date of shipping when stored at -20°C.</li></ol>
<b>RefSeq:</b>	<a href="#">NM_001079937.1</a> , <a href="#">NP_001073406.1</a>
<b>RefSeq Size:</b>	1839 bp
<b>RefSeq ORF:</b>	1014 bp
<b>Locus ID:</b>	290326
<b>Cytogenetics:</b>	15p12
<b>MW:</b>	37.6 kDa