

Product datasheet for **RR204098**

Psmc2 (NM_033236) Rat Tagged ORF Clone

Product data:

Product Type:	Expression Plasmids
Product Name:	Psmc2 (NM_033236) Rat Tagged ORF Clone
Tag:	Myc-DDK
Symbol:	Psmc2
Synonyms:	MSS1
Vector:	pCMV6-Entry (PS100001)
E. coli Selection:	Kanamycin (25 ug/mL)
Cell Selection:	Neomycin
ORF Nucleotide Sequence:	>RR204098 representing NM_033236 Red=Cloning site Blue=ORF Green=Tags(s)

TTTTGTAATACGACTCACTATAGGGCGCCGGAATTCGTCGACTGGATCCGGTACCGAGGAGATCTGCC
GCC**CGATCGCC**

ATGCCGGATTACCTAGGTGCAGACCAGCGGAAAACCAAAGAGGATGAGAAGGACGACAAGCCCATCCGAG
CTCTGGATGAAGGGGATATCGCCTTGTTGAAAACCTATGGCCAGAGTACTTATTCGAGGCAGATCAAGCA
GGTTGAAGATGACATTCAGCAACTTCTTAAAAAATTAATGAGCTCACTGGTATCAAAGAGTCCGCACT
GGGCTGGCCCTCCAGCCCTCTGGGATTTGGCTGCAGACAACAGACACTTCAGAGTGAACAGCCGCTAC
AGGTTGCAAGATGTACCAAGATAATCAACGCCGATTTCAGAGGACCCGAAATACATCATCAACGTGAAGCA
GTTTGCCAAGTTCGTGGTGGATCTCAGTGATCAGGTGGCACCTACTGACATTGAGGAAGGGATGAGAGTC
GGCGTGGACAGAAATAAATACCAAAATTCACATTCCTACTGCCTCCTAAGATTGACCCAACAGTTACCATGA
TGCAGGTGGAGGAAAACCTGATGTACATACAGTGACGTTGGTGGCTGTAAGGAACAGATTGAGAAATT
GCGGGAAGTGGTTGAAACCCCTACTCCATCCAGAGAGGTTTGTAACTTGAATCGAGCCTCCGAAG
GGTGTGTTGTTATTTGGCCACCAGGCACAGGCAAGACCCTCTGTGCCAGGCGAGTGGCCAATCGGACTG
ATGCTTGCTTCCAGTTATCGGGTCTGAGCTTGTACAGAAGTACGTCGGTGAAGGGGCTCGAATGTT
TCGGGAGCTTTTGAATGGCCAGGACAAAAAGCCTGCCTTATTTCTTTGATGAAATTGATGCCATT
GGAGGGGCTCGGTTTGACGATGGCGCTGGGGGTGACAATGAGGTGCAGAGGACCATGTTGGAGCTCATCA
ATCAGCTGGATGGCTTTGATCCTCGGGCAACATCAAAGTGCTCATGGCCACTAACCAGCTGATACTCT
GGACCCAGCGCTGATGAGGCCAGGGAGGCTGGACAGAAAGATTGAGTTCAGCTTACCTGACTTAGAGGGT
CGAACGCACATCTTAAGATTATGCTCGCTCAATGAGTGTGAAAGAGACATCCGATTTGAGCTACTAG
CCCGCTGTGTCCAAACAGTACTGGAGCGGAGATTAGAAGCGTTGCACAGAGGCTGGTATGTTTGAAT
CCGAGCCCGGAGAAAGATTGCTACAGAGAAGGACTTCTTAGAAGCTGTAATAAGGTCATCAAGTCGAT
GCCAAATTTAGTCTACTCCCGCTACATGACATACAAC

ACGCGTACGCGGCCGCTCGAGCAGAAACTCATCTCAGAAGAGGATCTGGCAGCAAATGATATCCTGGATT
ACAAGGATGACGACGATAAGGTTTAA



[View online >](#)

Protein Sequence: >RR204098 representing NM_033236
 Red=Cloning site Green=Tags(s)

MPDYLGADQRKTKEDKDDKPIRALDEGDIALLKTYGQSTYSRQIKQVEDDIQQLLKKINELTGIKESDT
 GLAPPALWDLAADKQTLQSEQLQVARTKIINADSEDPKYIINVKQFAKFVVDLSDQVAPTDIEEGMRV
 GVDRNKYQIHIPLPPKIDPTVTMMQVEEKPDVTVSDVGGCKEQIEKLREVVETPLLLHPERFVNLGIEPPK
 GVLLFGPPGTGKTLCAVANRTDACFIPVIGSELVQKYVGEARMVRELFEMARTKKACLIFFDEIDAI
 GGARFDDGAGGDNEVQRTMLELINQLDGFDPGRNLIKVLMATNRPDTLDPALMRPGRDRKIEFSLPDLG
 RTHIFKIHARMSVERDIRFELLARLCPNSTGAEIRSVCTEAGMFAIRARRKIATEKDFLEAVNKVIKSY
 AKFSATPRYMTYN

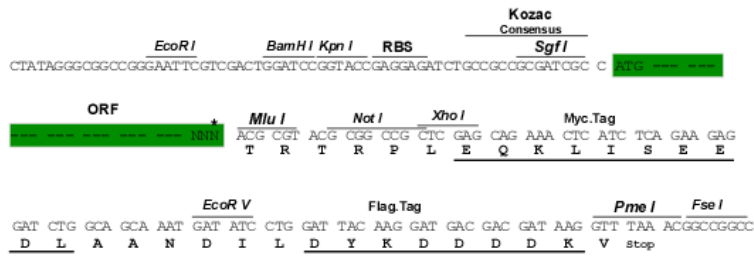
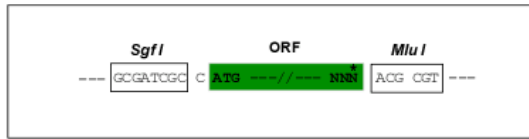
TRTRPLEQKLISEEDLAANDILDYKDDDDKV

Restriction Sites:

SgfI-MluI

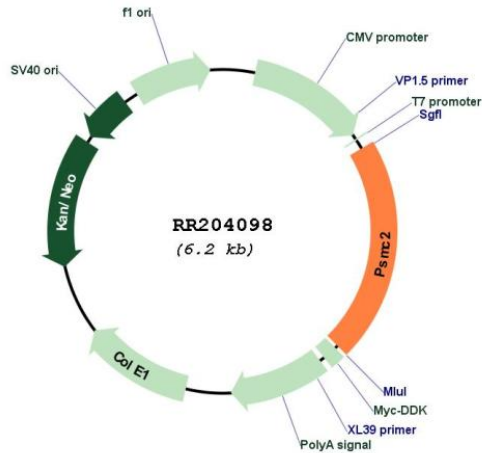
Cloning Scheme:

Cloning sites used for ORF Shuttling:



* The last codon before the Stop codon of the ORF

Plasmid Map:



ACCN:

NM_033236

ORF Size:	1299 bp
OTI Disclaimer:	The molecular sequence of this clone aligns with the gene accession number as a point of reference only. However, individual transcript sequences of the same gene can differ through naturally occurring variations (e.g. polymorphisms), each with its own valid existence. This clone is substantially in agreement with the reference, but a complete review of all prevailing variants is recommended prior to use. More info
OTI Annotation:	This clone was engineered to express the complete ORF with an expression tag. Expression varies depending on the nature of the gene.
Components:	The ORF clone is ion-exchange column purified and shipped in a 2D barcoded Matrix tube containing 10ug of transfection-ready, dried plasmid DNA (reconstitute with 100 ul of water).
Reconstitution Method:	<ol style="list-style-type: none">1. Centrifuge at 5,000xg for 5min.2. Carefully open the tube and add 100ul of sterile water to dissolve the DNA.3. Close the tube and incubate for 10 minutes at room temperature.4. Briefly vortex the tube and then do a quick spin (less than 5000xg) to concentrate the liquid at the bottom.5. Store the suspended plasmid at -20°C. The DNA is stable for at least one year from date of shipping when stored at -20°C.
RefSeq:	NM_033236.1 , NP_150239.1
RefSeq Size:	1403 bp
RefSeq ORF:	1302 bp
Locus ID:	25581
UniProt ID:	Q63347
Cytogenetics:	4q11
MW:	48.6 kDa
Gene Summary:	may play a role in ATP-dependent RNA/DNA unwinding [RGD, Feb 2006]