

Product datasheet for **RR204090**

Endog (NM_001034938) Rat Tagged ORF Clone

Product data:

Product Type:	Expression Plasmids
Product Name:	Endog (NM_001034938) Rat Tagged ORF Clone
Tag:	Myc-DDK
Symbol:	Endog
Mammalian Cell Selection:	Neomycin
Vector:	pCMV6-Entry (PS100001)
E. coli Selection:	Kanamycin (25 ug/mL)
ORF Nucleotide Sequence:	>RR204090 representing NM_001034938 Red=Cloning site Blue=ORF Green=Tags(s)

TTTTGTAATACGACTCACTATAGGGCGCCGGGAATTCGTCGACTGGATCCGGTACCGAGGAGATCTGCC
GCC**CGATCGCC**

ATGCGCGCGCTACGGGCCGGTTTGACCCTGGCGCTGGGCGCCGGCCTGGGCGCCGCGGCAGAGCATTGGC
GGCGGCGAGAGGGTAAAGGGCCGGGGCTGCTGGGCCGAGTGCCAGTGTGCCGGTTGTCGCGGCCGATCT
TCCCGCGCTGCCGGGGGACCGGCTGGCAGCACCGGAGAGTTGGCCAAGTACGGGCTGCCCGCGTGGCG
CAGCTCCGGAGCCGCGAGTCTACGTGCTGAGCTACGACCCGCGCACGCGGTTGCGCTCTGGGTGTTGG
AGCAGCTGAGGCCAGAGCGGCTCCGTGGCGATGGGGACCGTCGCGCTGCGACTCCACGAGGACGATTC
TGTGCACGCGTACCACCGCGCCACCAATGCGGACTACCGCGCAGTGGCTTTGACCGCGGCCACTTGGCG
GCCGCCGCAATCACCGCTGGAGTCAGCGGGCCATGGACGACACCTTCTACCTGAGCAACGTAGCGCCTC
AGGTGCCACACCTCAACCAGCATGCCTGGAACAACCTTGAGAAGTACAGCCGAGCTTGACTCGAACTTA
CCAAAACGTTTATGTCTGCACAGGGCCTCTTTTCTGCCAGGACCGAGGCTGATGGGAAGTCTATGTG
AAGTACCAGGTTATTGGGAAGAACCACGTGGCAGTGCCACACACTTCTCAAGGTGTTGATCCTGGAGG
CAGCCAGTGGGCAATCGAGCTGCGTTCCTATGTGATGCCCAATGCCCGGTGGATGAGACTCTCCCTTT
GGAGCGTTCCTAGTGCCATCGAGAGCATCGAGCGGGCCTCGGGATTGCTCTTCGTGCCCAATATTCTG
GCTCGAGCTGAAACCTCAAGGCCATCACTGCTGGTAGCAAG

AG**CGGACCG**ACGCGTACGCGGCCGCTCGAGCAGAACTCATCTCAGAAGAGGATCTGGCAGCAAATGATATCC
TGGATTACAAGGATGACGACGATAAGGTTAA



[View online »](#)

Protein Sequence: >RR204090 representing NM_001034938
 Red=Cloning site Green=Tags(s)

MRALRAGLTLALGAGLGAAAHHRRREGKGPGLLGRVPVLPVVAADLPALPGGPAGSTGELAKYGLPGVA
 QLRSRSESYVLSYDPRTRGALWVLEQLRPERLRGDGDRRACDFHEDDSVHAYHRATNADYRGSFGDRGH
 LA
 AAANHRWSQRAMDDTFYLSNVAPQVPHLNQHAWNNLEKYSRSLTRTYQNVYVCTGPLFLPRTEADGKSYV
 KYQVIGKNHVAVPTHFFKVLILEAASGQIELRSYVMPNAPVDETLPLERFLVPIESIERASGLLFVFNIL
 ARAGNLKAITAGSK

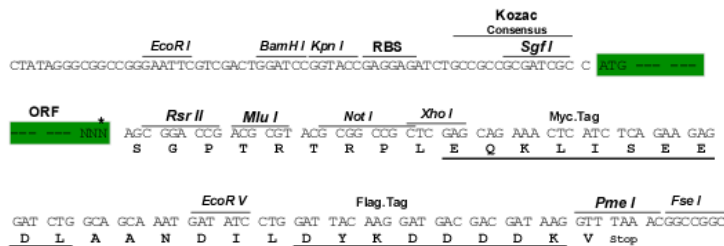
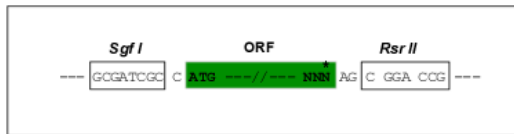
SGP TRTRPLEQKLISEEDLAANDILDYKDDDDKV

Chromatograms: https://cdn.origene.com/chromatograms/ja2055_e04.zip

Restriction Sites: SgfI-RsrII

Cloning Scheme:

Cloning sites used for ORF Shuttling:



* The last codon before the Stop codon of the ORF

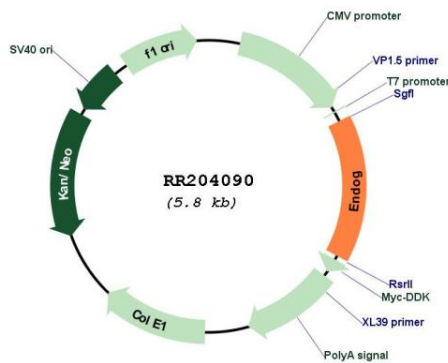
ACCN: NM_001034938

ORF Size: 882 bp

OTI Disclaimer: Due to the inherent nature of this plasmid, standard methods to replicate additional amounts of DNA in E. coli are highly likely to result in mutations and/or rearrangements. Therefore, OriGene does not guarantee the capability to replicate this plasmid DNA. Additional amounts of DNA can be purchased from OriGene with batch-specific, full-sequence verification at a reduced cost. Please contact our customer care team at custsupport@origene.com or by calling 301.340.3188 option 3 for pricing and delivery.

The molecular sequence of this clone aligns with the gene accession number as a point of reference only. However, individual transcript sequences of the same gene can differ through naturally occurring variations (e.g. polymorphisms), each with its own valid existence. This clone is substantially in agreement with the reference, but a complete review of all prevailing variants is recommended prior to use. [More info](#)

OTI Annotation:	This clone was engineered to express the complete ORF with an expression tag. Expression varies depending on the nature of the gene.
Components:	The ORF clone is ion-exchange column purified and shipped in a 2D barcoded Matrix tube containing 10ug of transfection-ready, dried plasmid DNA (reconstitute with 100 ul of water).
Reconstitution Method:	<ol style="list-style-type: none"> 1. Centrifuge at 5,000xg for 5min. 2. Carefully open the tube and add 100ul of sterile water to dissolve the DNA. 3. Close the tube and incubate for 10 minutes at room temperature. 4. Briefly vortex the tube and then do a quick spin (less than 5000xg) to concentrate the liquid at the bottom. 5. Store the suspended plasmid at -20°C. The DNA is stable for at least one year from date of shipping when stored at -20°C.
RefSeq:	<u>NM_001034938.1</u> , <u>NP_001030110.1</u>
RefSeq Size:	929 bp
RefSeq ORF:	885 bp
Locus ID:	362100
Cytogenetics:	3p12
MW:	32.7 kDa

Product images:


Circular map for RR204090