

Product datasheet for **RR204082**

Mfap4 (NM_001034124) Rat Tagged ORF Clone

Product data:

Product Type:	Expression Plasmids
Product Name:	Mfap4 (NM_001034124) Rat Tagged ORF Clone
Tag:	Myc-DDK
Symbol:	Mfap4
Synonyms:	Magp-36
Vector:	pCMV6-Entry (PS100001)
E. coli Selection:	Kanamycin (25 ug/mL)
Cell Selection:	Neomycin
ORF Nucleotide Sequence:	>RR204082 representing NM_001034124 Red=Cloning site Blue=ORF Green=Tags(s)

TTTTGTAATACGACTCACTATAGGGCGGCCGGAATTCGTCGACTGGATCCGGTACCGAGGAGATCTGCC
GCC**CGATCGC**C

ATGAAGACCTCTCAGGCCTGCCACTGCTGCTGCTGCTGCTGCTCTCCACGCCTCCTCCCTGCGCCCCAC
AAGCCTCCGGATCCGGGAGATGCTCTGGAGAAGTCTGCCTCAGCAACCCCTGGACTGTGATGATAT
CTACATGCAGGGCTATCAGGAAGATGGGGTGTACCTCATCTACCCCTATGGCCCCAGTGTGCCGGTCCCT
GTCTTCTGTGACATGACAACCGAGGGTGGCAAGTGGACGGTTTTCCAGAAAAGATTCAACGGCTCAGTGA
GTTTCTCCGGGTTGGAACGACTACAAGCTGGGCTTCGGCCGTGCTGACGGGGAGTACTGGCTGGGGCT
GCAGAACCTGCACCTCCTGACACTGAAGCAGAAGTATGAGTTGCGCGTGGACTTGAAGACTTTGAGAAC
AACACAGCCTATGCTAAGTATGTTGACTTCTCCATCTCCCCAATGCGGTGAGTGGGAGGAGGATGGCT
ATACCCCTACGTGGCTGGCTTCGAGGATGGCGGGCAGGTGACTCACTGTCTACCACAGTGGCCAGAA
GTTCTCCACCTTTGATCGAGACCAGGACCTTTTGTGCAGAACTGTGCAGCCCTCCTCAGGAGCCTTC
TGGTTCAGAAGCTGCCATTTTGCCAACCTCAACGGCTTCTACCTGGTGGTCCCACCTCCTATGCCA
ATGGCATCAACTGGGCCAGTGGAAAGGCTTCTACTACTCCCTCAAGCGCACTGAGATGAAAATTCGTCG
TGCC

ACGCGTACGCGGCCGCTCGAGCAGAAACTCATCTCAGAAGAGGATCTGGCAGCAAATGATATCCTGGATT
ACAAGGATGACGACGATAAGGTTTAA



[View online »](#)

Protein Sequence: >RR204082 representing NM_001034124
Red=Cloning site Green=Tags(s)

MKTL SGLPLLLLLLL STPPPCAPQASGIRGDALEK SCLQQPLDCDDIYMQGYQEDGVYL IYPYGPSVPVP
 VFCDMTTEGGKWTVFQKRFNGSVSFFRQWNDYKLGFGRADGEYWLGLQNLHLLTLKQKYELRVDLED FEN
 NTAYAKYVDF SISPNAVSAEEDGYTL YVAGFEDGGAGDSL SYHSGQKFSTFDRDQDLFVQNCAALSSGAF
 WFRSCHFANLNGFYLGSSHL SYANGINWAQWKGFYYS LKRTEMKIRRA

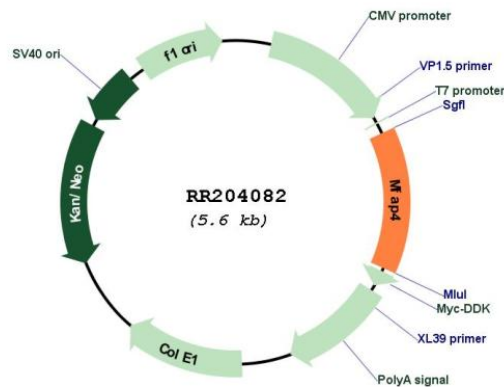
TRTRPLEQKLISEEDLAANDILDYKDDDDKV

Restriction Sites: SgfI-MluI

Cloning Scheme:



Plasmid Map:



ACCN: NM_001034124

ORF Size: 774 bp

OTI Disclaimer:	The molecular sequence of this clone aligns with the gene accession number as a point of reference only. However, individual transcript sequences of the same gene can differ through naturally occurring variations (e.g. polymorphisms), each with its own valid existence. This clone is substantially in agreement with the reference, but a complete review of all prevailing variants is recommended prior to use. More info
OTI Annotation:	This clone was engineered to express the complete ORF with an expression tag. Expression varies depending on the nature of the gene.
Components:	The ORF clone is ion-exchange column purified and shipped in a 2D barcoded Matrix tube containing 10ug of transfection-ready, dried plasmid DNA (reconstitute with 100 ul of water).
Reconstitution Method:	<ol style="list-style-type: none">1. Centrifuge at 5,000xg for 5min.2. Carefully open the tube and add 100ul of sterile water to dissolve the DNA.3. Close the tube and incubate for 10 minutes at room temperature.4. Briefly vortex the tube and then do a quick spin (less than 5000xg) to concentrate the liquid at the bottom.5. Store the suspended plasmid at -20°C. The DNA is stable for at least one year from date of shipping when stored at -20°C.
RefSeq:	NM_001034124.1 , NP_001029296.1
RefSeq Size:	1542 bp
RefSeq ORF:	777 bp
Locus ID:	287382
Cytogenetics:	10q22
MW:	29 kDa