

Product datasheet for **RR204052**

Pdia2 (NM_001105775) Rat Tagged ORF Clone

Product data:

Product Type:	Expression Plasmids
Product Name:	Pdia2 (NM_001105775) Rat Tagged ORF Clone
Tag:	Myc-DDK
Symbol:	Pdia2
Synonyms:	Pdip
Vector:	pCMV6-Entry (PS100001)
E. coli Selection:	Kanamycin (25 ug/mL)
Cell Selection:	Neomycin



[View online »](#)

ORF Nucleotide Sequence:

>RR204052 representing NM_001105775
 Red=Cloning site Blue=ORF Green=Tags(s)

TTTTGTAATACGACTCACTATAGGGCGGCCGGAATTCGTCGACTGGATCCGGTACCGAGGAGATCTGCC
 GCC**CGGATCGCC**

ATGGATGATCGGTTTCTGCCAGTGTGCTGCTCCTGCTGGGTGTCTCAGGCTCATGGGGACAGGGAGAGG
 AGCCGGGGGGTCCCCAGAGGTGCTCTCTGAGGAGTCCATTGGGGAAGAAGTCCCCGAGGAGGATGGAAT
 CTTGGTTTTGAACAACCAAAACCCTGAGCCTGGCACTGCAGGAGCATTAGCCCTGATGGTGGAGTTTTAT
 GCCCATGGTGTGGTCACTGCAAGGCACTAGCTCCTGAGTACAGCAAGGCAGCTGCCCTGCTGGCAGCTG
 AGTCAGCTGCGGTACCTTGCCAAAGTGGATGGGCTGCGGAACCAGAGCTGACCAAGGAGTTGGAGT
 GGTAGGGTACCCTACACTCAAGTCTTCCAGAATGAAACCGCACAAACCAGAAGAATACATAGGGCCC
 AAGACAGCTGAGGGCATTGCTGAGTGGCTGAGGCGGCAGTGGGGCCAGCGCCACAGTCTGGAGGATG
 AGGAAGGTGTCCAGGCACTGATGGCAAATGGGATATGGTGGTATTGGCTTCTTTCAGGATCTACAGGA
 AGAGGATGTGGCAACTTCTGCGCTTGGCCAGGGATGCTCTGGACATGGCCTTTGGCTTCACTGACCAG
 CCACAGCTTTTTGAGAAGTTGGCCTACCAAGGACACTGTGGTCTTTTCAAGAAGTTGATGAGGGTC
 GGGCCGACTTCCCGGTAGACAAGGAGGCTGGCCTGGACCTGGGGGACCTGTCCCGCTTCCATCACACA
 CAGCATGCACCTGGTACAGAATTAACAGCCAGACATCACCTAAGATCTTTCAGCCAGGATCCTCAAC
 CACCTGCTGCTGTTTGTGAACCAGACACTAGCTCAGCACAGGGAGCTACTGACAGGCTTCAGGGAGGCGAG
 CTCCTCCATTCCGGGGACAGGTGTTGTTTGTGATGGTGGATGTGGCCGCTGACAACAGCCATGTGCTAAA
 TTATTTTGGCCTCAAGGCTGAGGAAGCCCCACCCTGCGTCTGATTAATGTTGAGACTACCAAGAAGTAT
 GCACCTGCAGGGGTGATACCCATCACTGCAGCTTCTGTGGCTGCATTCTGCCAGGCAGTCCCTCCATGGGG
 AAGTCAAGCACTATCTCCTGAGCCAGGAGATACCCCGACTGGGACCAGCGGCCAGTCAAGACTTTGT
 GAGCAAGAATTTTGGAGCAGGTTGCCTTTGATGAAACCAAGAATGTGTTTGTCAAGTTCTATGCCCATGG
 TGAGCCACTGCAAGGAGATGGCTCCAGCCTGGGAGGCACTGGCAGAGAAGTACAGGATCGTGAGGACA
 TTGTCATTGCTGAGATGGATGCTACAGCTAACGAGCTGGAGGCCTTCTCTGTGCATGGCTATCCCACTCT
 CAAGTTCTTCCCTGCAGGACCTGACCGAAAGATTATAGAATACAAAAGCACCAGGGACCTAGAGACATTC
 TCCAAGTCTCGACAGAGGAGGTGACCTGCCTGAGGAAGAATCCAAGGAGCCTGCAGTCTCTGCCCCAG
 AAGCAACCCAATTCCACCTTGGTCCCAAGGAGGAGCTG

ACGCGTACGCGGCCGCTCGAGCAGAAACTCATCTCAGAAGAGGATCTGGCAGCAAATGATATCTGGATT
 ACAAGGATGACGACGATAAGGTTTAA

Protein Sequence:

>RR204052 representing NM_001105775
 Red=Cloning site Green=Tags(s)

MDDRFLPVLLLLLVSGSWGQEEPPGPPEVLSEESIGEEVPEEDGILVLNNQTLALQEHSLMVEFY
 APWCGHCKALAPEYSKAAALLAAESAAYTLAKVDGPAPELTKFVGVGYPTLKFQNGNRTNPEEYIGP
 KTAEGIAEWLRRRVGPSATRLEDEEGVQALMAKWDMMVIGFFQDLQEEDVATFLALARDALDMAFGFTDQ
 PQLFEKFGTLKDTVVLKKFDEGRADFPVDKEAGLDLGDLSRFLITHSMHLVTEFNSQTSPIFAARILN
 HLLL FVNQTLAQHRELLTGFREAAPPFRGQVLFVMVDVAADNSHVLNYFGLKAEAPTLRLINVTTKY
 APAGVIPITAASVA AFCQAVLHGEVKHYLLSQEIPPDWDQRPVKTLVSKNFEQVAFDETKNVFKFYAPW
 CSHCKEMAPAWELA EK YRDREDIVIAEMDATANELEAFSVHGYPTLKFPPAGPDRKIIIEYKSTRDLET
 SKFLDRGGDLPEEESKEPAVSAPEAQPNSTLGPKEEL

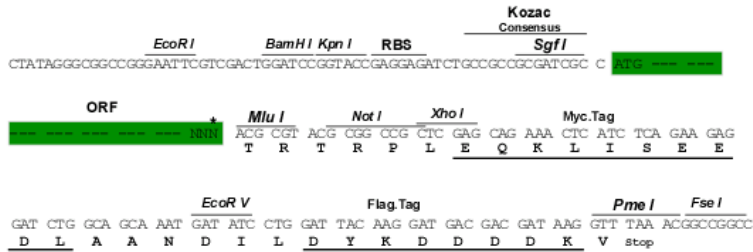
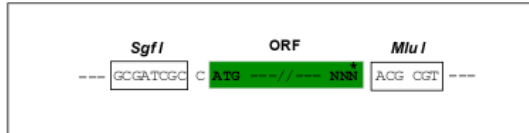
TRTRPLEQKLI SEEDLAANDILDYKDDDDKV

Restriction Sites:

Sgfl-MluI

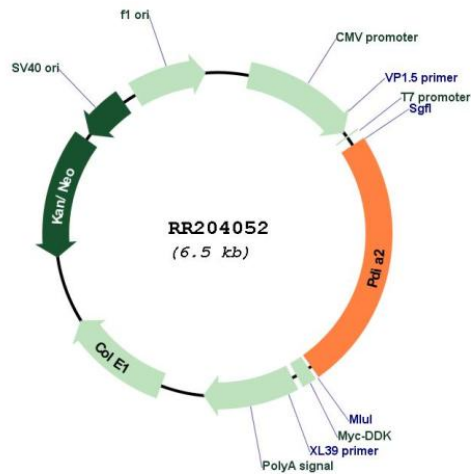
Cloning Scheme:

Cloning sites used for ORF Shutting:



* The last codon before the Stop codon of the ORF

Plasmid Map:



ACCN:	NM_001105775
ORF Size:	1581 bp
OTI Disclaimer:	The molecular sequence of this clone aligns with the gene accession number as a point of reference only. However, individual transcript sequences of the same gene can differ through naturally occurring variations (e.g. polymorphisms), each with its own valid existence. This clone is substantially in agreement with the reference, but a complete review of all prevailing variants is recommended prior to use. More info
OTI Annotation:	This clone was engineered to express the complete ORF with an expression tag. Expression varies depending on the nature of the gene.
Components:	The ORF clone is ion-exchange column purified and shipped in a 2D barcoded Matrix tube containing 10ug of transfection-ready, dried plasmid DNA (reconstitute with 100 ul of water).
Reconstitution Method:	<ol style="list-style-type: none">1. Centrifuge at 5,000xg for 5min.2. Carefully open the tube and add 100ul of sterile water to dissolve the DNA.3. Close the tube and incubate for 10 minutes at room temperature.4. Briefly vortex the tube and then do a quick spin (less than 5000xg) to concentrate the liquid at the bottom.5. Store the suspended plasmid at -20°C. The DNA is stable for at least one year from date of shipping when stored at -20°C.
RefSeq:	NM_001105775.2 , NP_001099245.2
RefSeq Size:	1671 bp
RefSeq ORF:	1584 bp
Locus ID:	287164
Cytogenetics:	10q12
MW:	58.5 kDa