

Product datasheet for **RR204042**

Npc111 (NM_001002025) Rat Tagged ORF Clone

Product data:

Product Type: Expression Plasmids
Product Name: Npc111 (NM_001002025) Rat Tagged ORF Clone
Tag: Myc-DDK
Symbol: Npc111
Synonyms: SLC66A2
Vector: pCMV6-Entry (PS100001)
E. coli Selection: Kanamycin (25 ug/mL)
Cell Selection: Neomycin
ORF Nucleotide Sequence: >RR204042 representing NM_001002025
Red=Cloning site Blue=ORF Green=Tags(s)

TTTTGTAATACGACTCACTATAGGGCGCCGGGAATTCGTCGACTGGATCCGGTACCGAGGAGATCTGCC
GCCGGATCGCC

ATGGCAGCTGCCTGGCTGGGATGGCTGCTCTGGGCCCTGCTCCTGAGCGCGGCCAGGGTGAGCTATACA
 CACCCAAACACGAAGCTGGGGTCTGCACCTTTACGAAGAGTGCGGGAAAAACCCAGAGCTCTCTGGAGG
 CCTCAGTCACTATCCAATGTATCCTGCCTGTCTAACACCCCGGCCCGCCACGTACGGGTGAACACCTG
 GCTCTTCCAGCGCATCTGTCCCGCCTGTACAACGGCCCAATACCACTTTTGCTGTGCTCTACCA
 AGCAGCTGCTGTCTTAGAAAGCAGCATGTCCATACCAAGGCCCTTCTACGCGCTGCCGGCCTGCTC
 TGACAATTTGTGAGCTTACACTGCCACAACACTTGACGCCCTGACCAGAGCCTTTCATCAACGTCACC
 CGGGTGGTTGAGCGGGCGCTGGAGAGCCTCCTGCCGTGGTGGCCTATGAGGCCTTTATCAGCGCAGCT
 TTGCTGAGAAGGCCTATGAGTCTGCAGCCAGGTGCGCATCCCTGCGGCCGCTTCCTTGGCCGTGGGCG
 CATGTGTGGAGTGTATGGCTCCGCCCTTGCAATGCTCAGCGCTGGCTCAACTCCAAGGAGACACAGGG
 AATGGCCTGGCTCCGCTGGATATCACCTTCCACCTTTGGAGCCTGGCCAGGCCCTACCGGATGGGATCC
 AGCCACTGAATGGGAAGATCGCACCTGCAACGAGTCTCAGGGTATGACTCAGCAGTCTGCTCTGCCA
 GGACTGTGCGGGCTCCTGCCCTGTCATCCCTCCGCCGAGGCCTTGCGCCCTTCTTCTACATGGGTGCG
 ATGCCAGGCTGGCTGGCCCTCATCATCATCTTCACTGCTGCTTTGTGTTGCTCTCTGCAGTCTTGTGC
 GTCTCCGAGTGGTTTCCAACAGGAACAAGAACAAGGCAGAAAGGCCCCAGGAAGCCCCAACTCCCTCA
 TAAGCACAACTCTACCCCATACCATCTGGCCGGTTCTTCCAGAACTGGGGCACAAGGGTGGCCTCG
 TGGCCACTCACCGTCTTAGCACTGTCTTATCGTTGTGATAGCCTTAGCAGCAGGCTGACCTTTATTG
 AACTCACACAGACCCTGTGGAAGTGTGGTCCGCCCAAGAGCCAGGCCGGAAGAGAAGTCTTTCCA
 TGATGAGCATTTCCGCCCTTCTTTCGAACCAACCAGATTTTCGTGACAGCTCGGAACAGGTCCAGTAC
 AAGTACGACTCCCTACTGCTAGGGTCCAAGAACTTCAGTGGGATCCTGTCCCTGGACTTCTGCTGGAGC
 TGCTGGAGCTTCAGGAGAGGCTTCGACACTGCAAGTGTGGTCCCTGAGGCAGAGCGCAACATCTCCCT
 CCAGGACATCTGCTATGCCCCCTCAACCCATATAACACCAGCCTCTCCGACTGTGTGTCAACAGCCTC
 CTTCACTTCCAGAACAACCGCACCTCCTGATGCTCACGGCAACCAGACTCTGAATGGCCAGACCT



CCCTGGTGGACTGGAAGGACCATTTCTCTACTGTGCAAATGCCCTCTCACGTTCAAAGATGGCACGTC
TCTGGCCCTGAGCTGCATGGCTGACTACGGGGCTCCTGTCTTCCCCTTCTTGTGTTGGGGGATACCAA
GGCACGGACTATCCGAGGCAGAAGCGCTGATCATAACCTTCTCTCAATAACTACCCCGCTGATGATC
CCCGCATGGCCCAGGCCAAGCTCTGGGAGGAGGCTTTCTGAAGGAAATGGAATCCTTCCAGAGGAACAC
AAGTGACAAGTTCCAGGTTGCGTTCTCAGCTGAGCGCTCTCTGGAGGATGAGATCAACCGCACCACCATC
CAGGACCTGCCTGTCTTGGCGTCAGCTACATTATCGTCTTCTGTACATCTCCCTGGCCCTGGGCAGTC
ACTCCAGATGCAGCCGAGTAGCGGTGGAGTCCAAGGCTACTCTGGGCCTAGGTGGGGTATTGTTGTGCT
GGGAGCAGTTCTGGCTGCCATGGGCTTCTACTCCTACCTGGGTGCCCTTCTCTGGTTATCATCCAA
GTGGTACCTTTCTGGTCTAGCTGTGGGAGCTGACAACATCTTCATCTTTGTTCTTGAGTACCAGAGGC
TACCTAGGATGCCTGGGGAACAGCGAGAGGCTCACATTGGCCGCACCCTGGGCAGTGTGGCCCCAGCAT
GCTGCTGTGCAGCCTCTCTGAGGCCATCTGCTTCTTTCTAGGGGCCCTGACCCCATGCCAGCTGTGAGG
ACCTTCGCTTGACCTCTGGCTTAGCAATTATCCTCGACTTCTGCTCCAGATGACTGCCTTTGTGGCC
TGCTCTCCCTGGATAGCAAGAGGCAGGAGGCTCTCGCCCGGATGCTTATGCTGCTTTTCAACCCGGAA
GCTGCCCCACCTAAAGAAAAAAGAGGCCTTACTCCGCTTCTCCGCAAGATATACGCTCCTTTCTGT
CTGCACAGATTATCCGCCCTGTTGTGATGCTGCTGTTTCTGACCCTGTTGGAGCAAATCTCTACTTAA
TGTGCAACATCAACGTGGGGCTAGACCAGGAGCTGGCTCTGCCAAGGACTCGTACTTGATAGACTACTT
CCTCTTTCTGAACCGATACCTTGAAGTGGGGCCTCCAGTGTACTTTGTCACCACCTCGGGCTTCACTTC
TCCAGCGAGGCAGGCATGAACGCCACTTGTCTAGCGCAGGCTGTAAAGAGCTTCTCCCTAACCCAGAAAA
TCCAGTATGCCAGTGAATTCCTGACCAGTCTTACGTGGCTATTGCTGCATCCTCCTGGGTAGATGACTT
CATCGACTGGCTGACCCCGTCTCTCTGCTGTGCGCTTTATATACGTGGCCCCATAAGGATGAGTTC
TGTCCTCAACGGATACTTCTTCAACTGCTTAAAAACTGCATGAACCGCACTCTGGGTCTGTGAGGC
CCACAGCGGAACAGTTTCATAAGTACCTGCCCTGGTTCCTGAATGATCCGCCAATATCAGATGTCCCAA
AGGGGGTCTAGCAGCGTATAGAAGCTGTGAATTTGAGCTCAGATGGCCAGGTTATAGCCTCCAGTTC
ATGGCCTACCACAAGCCCTTAAGGAACTCACAGGACTTACAGAAGCTCTCCGGGCGTCCCGTTGCTAG
CAGCCAACATCACAGCTGACCTACGGAAGTGCCTGGGACAGATCCAAACTTTGAGGTCTTCCCTTACAC
GATCTCCAACGTGTTCTACCAGCAATACCTGACGGTCTTCTGAGGGAATCTTACCCTTGCTCTTTGC
TTTGTGCCACCTTTGTTGTCTGCTACCTCTACTGGCCTGGACATGTGCTCAGGGATCCTCAACCTAC
TCTCCATCATTATGATTCTCGTGGACACCATTGGCCTCATGGCTGTGTTGGGTATCAGCTATAATGCGGT
ATCCCTCATCAACCTTGTACGGCAGTGGGCATGTCTGTGGAGTTTGTGTCCACATCACTCGGTCTTT
GCTGTAAGCACCAAGCCTACCCGGCTGGAGAGGGCTAAAGATGCTACTGTCTTATGGGCAGTGCAGTGT
TTGCTGGAGTGGCCATGACCAACTTCCCAGGCATCCTCATCTTGGGCTTTGCCAAGCCAGCTTATTCA
GATCTTCTTCTCCGCTCAACCTTCTGATCACCTTGGTGGTCTGCTGCATGGCCTGGTCTTCTGCCG
GTTGCTCTCAGCTATCTGGGACCAGATGTTAACCAAGCTCTGGTACAGGAGGAGAAACTAGCCAGCGAGG
CAGCAGTGGCCCCAGAGCCTTCTTGCCACAGTACCCCTCCCCTGCTGATGCGGATGCCAATGTTAACTA
CGGCTTTGCCCAGAAGTGGCCACGGAGCTAATGCTGCTAGAAGCTCTTGGCCAAAAGTGACCAAAAG
TTC

ACGCGTACGCGGGCCGCTCGAGCAGAACTCATCTCAGAAGAGGATCTGGCAGCAAATGATATCCTGGATT
ACAAGGATGACGACGATAAGGTTTAA

Protein Sequence: >RR204042 representing NM_001002025
 Red=Cloning site Green=Tags(s)

```

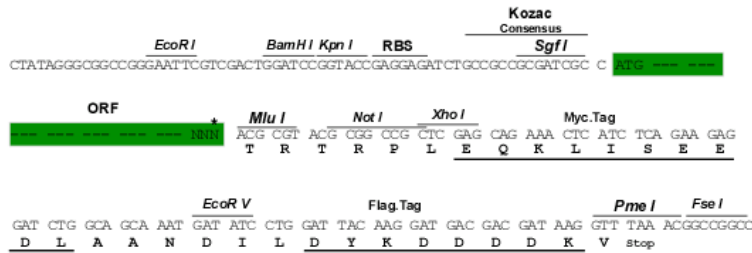
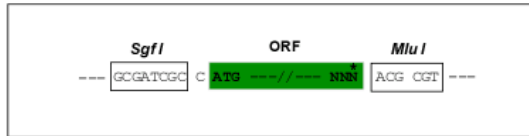
MAAAWLGWLLWALLLSAAQGELYTPKHEAGVCTFYEECGKNPELSGGLTSLSNVSCLSNTPARHVTGEHL
ALLQRICPRLYNGPNTTFACCSKQLLSLESSMSITKALLTRCPACSDNFVSLHCHNTCSPDQSLFINVT
RVVERGAGEPPAVVAYEAFYQRSFAEKAYESCSQVRIPAAASLAVGSMCGVYGSALCNAQRWLNFGDGTG
NGLAPLDITFHLLLEPGQALPDGIQPLNGKIAPCNESQGDDSAVCSCQDCAASCPVIPPPEALRPSFYMGR
MPGWLALIIIFTAVFVLLSAVLVRLRVVSNRNKNKAEGPQEAPKLPKHKLSPHTILGRFFQNWGTRVAS
WPLTVLALSFIVVIALAAGLTFIELTTPVELWSAPKSQARKEKSFHDEHFGPFFRTNQIFVTARNRSSY
KYDSLGLGSKNFSGILSLDFLELLELQERLRHLQVWSPEAERNISLQDICYAPLNPNYNTSLSDCCVNSL
LQYFQNNRLLMLTANQTLNGQTSVDWKDHFLYCANAPLTFKDGTSALALSCMADYGAPVFPFLAVGGYQ
GTDYSEAEALIIITFSLNNYPADDPMAQAKLWEEAFLKEMESFQRNTSDKFQVAFSAERSLEDEINRTTI
QDLPVFAVSYIIVFLYISLALGYSRCSRVAVESKATLGLGGVIVVLGAVLAAMGFYSYLVGVPSSLVIIQ
VVPFLVLAVGADNIFIFVLEYQRLPRMPGEQREAHIGRTLGSVAPSMMLCSLSEACFFLGLALTPMPAVR
TFALTSGLAIIIDFLQMTAFVALLSLDSKRQEASRPDVLCCFSTRKLPPPKEKEGLLLRFRKIYAPFL
LHRFIRPVVMLLFLTLFGANLYLMCNINVGLDQELALPKDSYLDYFLFLNRYLEVGPVYFVTTSGFNF
SSEAGMNATCSSAGCKSFLTQKIYASEFPDQSYVAIAASSWVDDFIDWLTPSSSCCRLYIRGPHKDEF
CPSTDTSFNCLKNMNRTLGPVRPTAEQFHKYLWFLNDPPNIRCPKGGLAAYRTSVNLSDDGQVIAQF
MAYHKPLRNSQDFTEALRASRLAANITADLRKVPGTDPNFEVFPYITISNVFYQQYLTVLPEGIFTLALC
FVPTFVVCYLLGLDMCSGILNLLSIIIMILVDTIGLMAVWGISYNAVSLINLVTAVGMSVEFVSHITRSF
AVSTKPTRLERAKDATVFMGSAVFAVAMTNFPGILILGFAQAQLIQIFFRRLNLLITLLGLLHGLVFLP
VVL SYLGPDVNQALVQEEKLASEAAVAPEPSCPQYPSPADADANVNYGFAPELAHGANAARSSLPKSDQK
F
  
```

TRTRPLEQKLISEEDLAANDILDYKDDDDKV

Restriction Sites:
Cloning Scheme:

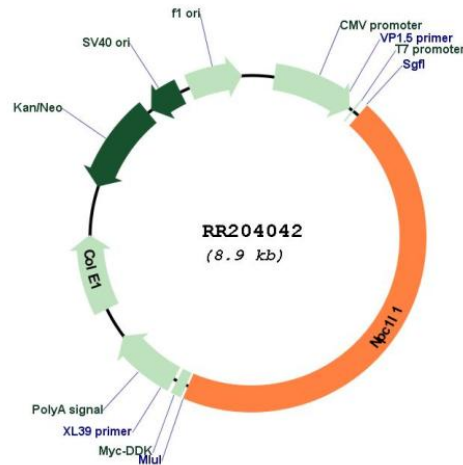
Sgfl-MluI

Cloning sites used for ORF Shuttling:



* The last codon before the Stop codon of the ORF

Plasmid Map:



ACCN: NM_001002025

ORF Size: 3993 bp

OTI Disclaimer: The molecular sequence of this clone aligns with the gene accession number as a point of reference only. However, individual transcript sequences of the same gene can differ through naturally occurring variations (e.g. polymorphisms), each with its own valid existence. This clone is substantially in agreement with the reference, but a complete review of all prevailing variants is recommended prior to use. [More info](#)

OTI Annotation: This clone was engineered to express the complete ORF with an expression tag. Expression varies depending on the nature of the gene.

Components: The ORF clone is ion-exchange column purified and shipped in a 2D barcoded Matrix tube containing 10ug of transfection-ready, dried plasmid DNA (reconstitute with 100 ul of water).

Reconstitution Method:

1. Centrifuge at 5,000xg for 5min.
2. Carefully open the tube and add 100ul of sterile water to dissolve the DNA.
3. Close the tube and incubate for 10 minutes at room temperature.
4. Briefly vortex the tube and then do a quick spin (less than 5000xg) to concentrate the liquid at the bottom.
5. Store the suspended plasmid at -20°C. The DNA is stable for at least one year from date of shipping when stored at -20°C.

RefSeq: [NM_001002025.1](#), [NP_001002025.1](#)

RefSeq Size: 4484 bp

RefSeq ORF: 3996 bp

Locus ID: 432367

UniProt ID: [Q6T3U3](#)

Cytogenetics: 14q21

MW: 146.4 kDa

Gene Summary: mouse homolog plays a role in intestinal cholesterol absorption [RGD, Feb 2006]