

## Product datasheet for **RR203991**

### Ldb1 (NM\_001107601) Rat Tagged ORF Clone

#### Product data:

**Product Type:** Expression Plasmids  
**Product Name:** Ldb1 (NM\_001107601) Rat Tagged ORF Clone  
**Tag:** Myc-DDK  
**Symbol:** Ldb1  
**Vector:** pCMV6-Entry (PS100001)  
**E. coli Selection:** Kanamycin (25 ug/mL)  
**Cell Selection:** Neomycin  
**ORF Nucleotide Sequence:** >RR203991 representing NM\_001107601  
Red=Cloning site Blue=ORF Green=Tags(s)

TTTTGTAATACGACTCACTATAGGGCGGCCGGAATTCGTCGACTGGATCCGGTACCGAGGAGATCTGCC  
GCC**CGATCGCC**

ATGCTGGATCGGGATGTGGGCCCACTCCCATGTACCCACCTACATACCTGGAGCCTGGGATAGGGAGGC  
ACACGCCATATGGTAACCCAGACAGACTATAGAATATTTGAACTTAACAAACGACTACAGAACTGGACAGA  
GGAGTGTGACAACTCTCTGGTGGGACGCTTTCACGACCGAGTTCTTCGAGGATGATGCTGACCATC  
ACTTTCTGCCTGGAGGATGGACCAAGAGATATACCATTGGCCGGACCCTGATACCACGCTACTTCCGAA  
GCATTTTCGAGGGGGTGTACGGAGCTGTATTACGTAAGCACCCCAAGGAGGCATTCCACAGCAA  
CTTCGTGTCCCTCGACTGTGACCAGGGCAGCATGGTGACCAGCATGGCAAACCCATGTTTACCCAGGTG  
TGTGTGGAAGGCCGTTGTACCTGGAGTTCATGTTTGACGACATGATGCGGATAAAGACATGGCACTTCA  
GTATCCGGCAGCACAGAGAGCTCATCCCCAGGAGTATCCTGGCCATGCACGCCAGGACCCAGATGTT  
GGATCAGCTCTCCAAAACATTACCCGGTGTGGTTGTCCAATCCACTCTCACTACCTCCGACTCTGT  
GTGATACTGGAGCCCATGCAGAACTCATGTCCCGTCACAAGACCTACAGCCTCAGCCCCGAGACTGCC  
TCAAGACCTGCCTTTTCCAGAAGTGGCAGCGGATGGTAGCACCTCCCGGGAGCCTGCACGACAGCAGCC  
CAGCAAACGGAGGAAACGGAAGTGTAGGGGGTAGCACCATGAGCTCGGGGGCGGCAACCAACAAC  
AGCAACAGCAAGAAGAAGAGCCAGCCAGCACCTTCGCTCTCCAGCCAGGTACCTGATGTGATGGTGG  
TGGGGGAGCCACCCTGATGGGCGGGGAGTTTCGGGACGAGGACGAGAGGCTCATCACTCGGCTGGAGAA  
CACCCAGTTTGCAGCGGCAACGGCATTGACGACGAGGACAGCTTTAACAACCTCCCTGCACTGGGGCC  
AACAGCCCCTGGAACAGCAAGCCTCCGTCCAGCCAAGAAAGCAAATCGGAGAACCCACGTCACAGGCTT  
CCCAG

**ACGCGT**ACGCGGCCGCTCGAGCAGAACTCATCTCAGAAGAGGATCTGGCAGCAAATGATATCCTGGATT  
ACAAGGATGACGACGATAAGGTTTAA



**Protein Sequence:** >RR203991 representing NM\_001107601  
 Red=Cloning site Green=Tags(s)

MLDRDVGPTMPYPPTYLEPGIGRHTPYGNQTDYRIFELNKRLQNWTEECDNLWDAFTTEFFEDDAMLTI  
 TFCLEDGPKRYTIGRTLIPRYFRSIFEGGATELYYVLKHPKEAFHSNFVSLDCDQGSMTQHGKPMFTQV  
 CVEGRLYLEFMFDDMMRIKTWHFSIRQHRELIPRSILAMHAQDPQMLDQLSKNITRCLSNSTLNYLRLC  
 VILEPMQELMSRHKTYSLSPRDCLKTCLFQKWQRMVAPPAEPARQQPSKRKRKRKMSGGSTMSSGGGNTNN  
 SNSKKKSPASTFALSSQVPDMVVGEPTLMGGEFGDEDERLITRENTQFDAQNGIDDEDSFNNSPALGA  
 NSPWSKPPSSQESKSENPTSQASQ

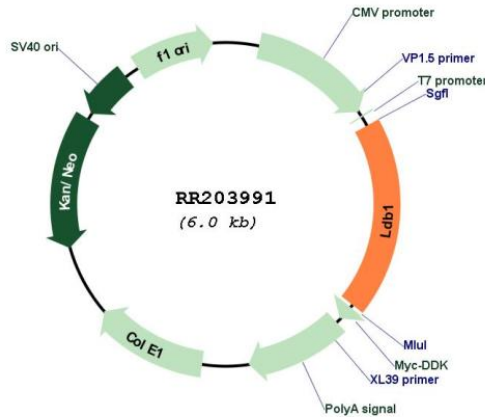
TRTRPLEQKLISEEDLAANDILDYKDDDDKV

**Restriction Sites:** SgfI-MluI

**Cloning Scheme:**



**Plasmid Map:**



**ACCN:** NM\_001107601

|                               |   |
|-------------------------------|---|
| <b>ORF Size:</b>              | 1125 bp   |
| <b>OTI Disclaimer:</b>        | The molecular sequence of this clone aligns with the gene accession number as a point of reference only. However, individual transcript sequences of the same gene can differ through naturally occurring variations (e.g. polymorphisms), each with its own valid existence. This clone is substantially in agreement with the reference, but a complete review of all prevailing variants is recommended prior to use. <a href="#">More info</a>  |
| <b>OTI Annotation:</b>        | This clone was engineered to express the complete ORF with an expression tag. Expression varies depending on the nature of the gene.  |
| <b>Components:</b>            | The ORF clone is ion-exchange column purified and shipped in a 2D barcoded Matrix tube containing 10ug of transfection-ready, dried plasmid DNA (reconstitute with 100 ul of water).  |
| <b>Reconstitution Method:</b> | <ol style="list-style-type: none"><li>1. Centrifuge at 5,000xg for 5min.</li><li>2. Carefully open the tube and add 100ul of sterile water to dissolve the DNA.</li><li>3. Close the tube and incubate for 10 minutes at room temperature.</li><li>4. Briefly vortex the tube and then do a quick spin (less than 5000xg) to concentrate the liquid at the bottom.</li><li>5. Store the suspended plasmid at -20°C. The DNA is stable for at least one year from date of shipping when stored at -20°C.</li></ol> |
| <b>RefSeq:</b>                | <a href="#">NM_001107601.1</a> , <a href="#">NP_001101071.1</a>   |
| <b>RefSeq Size:</b>           | 2293 bp   |
| <b>RefSeq ORF:</b>            | 1128 bp   |
| <b>Locus ID:</b>              | 309447  |
| <b>Cytogenetics:</b>          | 1q54  |
| <b>MW:</b>                    | 42.8 kDa  |