

Product datasheet for **RR203967**

Armcx2 (NM_001014274) Rat Tagged ORF Clone

Product data:

Product Type:	Expression Plasmids
Product Name:	Armcx2 (NM_001014274) Rat Tagged ORF Clone
Tag:	Myc-DDK
Symbol:	Armcx2
Vector:	pCMV6-Entry (PS100001)
E. coli Selection:	Kanamycin (25 ug/mL)
Cell Selection:	Neomycin



[View online »](#)

ORF Nucleotide Sequence:

>RR203967 representing NM_001014274
 Red=Cloning site Blue=ORF Green=Tags(s)

TTTTGTAATACGACTCACTATAGGGCGGCCGGGAATTCGTCGACTGGATCCGGTACCGAGGAGATCTGCC
 GCC**CGGATCGCC**

ATGAGCCGAGCTCGGGATGCTGGCTGTGTAGCTGCTGGAATAGTGATTGGGGCTAGTGCCTGGTACTGTG
 TCTACAAATACACTAGGGGGAAAGAACAAGAAAGAAGAGACTGGCCAAGCCAAGAACCGGCCTCTGT
 GGGTACTGGAAGTAGGGCTAGAGCTGGGCTAAGAGCTGGTTTCACAATTGACCTTGGGCCAGGATCAAT
 CCCCCAACCCAGTCAGTGTGAGACAATGAACAAGGCCGAAGAAGCCTCCAGTCTTGCCACAGCTGTAG
 CTGAAGAGGTGGCACCCACTGCACCCAGTCTAAGGTTTCAAGTGGGGCAGAAAGGAAAGTCCAGGAGCT
 AAAGTCAGGAAGTGAAGTAAATGGAATCTATAGTCATGACTTCAGCTGCCTGTGCAGTTACACCTCT
 CCCAAGGTGACAGGGCCTCTCACTGCTGCAGAGGCTCCAGAAATAGTAGGGGGTCCCAAAGTGGTAGAAA
 CTTCTAGCACCACAGAGGCTCTGCGGCAGTAGCATCCCTGGGCCAGCAGTATCTCCGAGGGTAGCACA
 GTCTCCTGGGCCAGCAGACCTTACCATCAATAGTGTCTCCTGGCCAACAGCAATTCCTGGGCAGTA
 GCACATCCTGGGACAGTCCAGTCTCCTGGGTGAGCAGCAACTGCCATGGCAGTGCAGTCTCTTGTGCCAG
 CATCCCCTTCGTGGGCAGTAGTAGCACCTCCTGGGGCAGTCTACATTCCTGTGGCAGCCCACTTCACTGG
 GCCAGCAGCAGCTCCCAGGATAACCCAGTCCCCTGGCACGGTGATACCTCCGCTTCCACCCCATCATCA
 GTGCTTCCCAGGGGAGTCCCAACAGTGCCTACCAGAACAGTTCAGTCTCCCGGGGAGCAGTACATCCTG
 TGGCAGCCAGTCTCCTGGGGTAGTGCCTCCTAGGACTGTCCAGTATTCTGGGGCAACAGTGCCTTCCGG
 GGCACCAGCAACTCCTAGGGCAGCGCATCTACCAGAGGGCAGCAACCACAGAGTCCCTAGGGCAGCA
 GCACCTGCTGAAGCTACAGGGACTCCTGGAACAGGAACACCTGCCGTGGTAGCTGAGGCTCTCTGCCCA
 TGCATTCTGGGGCTGCAGAGACTCCTGGGACTTCAGGGTCTCTAAGACAGCAGCCACAGGCAAGAAGAG
 AGCCCCAGGAGTTCACACTGGGGCTATACCTAAGACTGGGGCAGCCACTGGAGCTTCCCAAAGGTGGA
 GGCAAAGGTGAAACAAGAACCAGTGGAGGCAAGGGCAAAAAATAGGAAGAACAAGGTTGAAGTGGATG
 AATTGGGGATGGGTTTCCGTCCTGGTGATGGCGCAGCAGCGGCTGCTGCAGCTTCTGCTAATGGGGGCA
 AGCCTTCTAGCAGAGATCCCTGAATCTGAGGAAGGGGAGTCTGGGTGGACTGATACTGAGTCAGATTCT
 GACTCTGAGCCAGAGGTCCAGCAGAGGGGAAAGGGAAGAGAACCATTCCCATGCATAAGCGCCCTTTC
 CATATGAAATCGATGAGATTCTAGGTGTTGAGATCTCAGAAAAGTCTAGCCTTGCTTCAAGTCAAGAA
 CGACCCCTTCAATCAGCAAGTGGCCCTGCTCACCTGAGCAACAATGCCAACTATTCGTGTAATCAAGAA
 ACAATCCGAAAGTTGGGAGGCCTCCCAATTATTGCAAACATGATCAATAAGACTGACCCCACTTAAGG
 AAAAAGCCTTGATGGCCATGAATAACCTGAGTGAATAATGAGAACCAGGGCCGACTTCAGGTGTACAT
 GAATAAAGTGATGGATGATGTCATGGCCTTAACCTGAACTCGGCGGTGCAGGTAGTTGGGCTAAAATTT
 CTAACGAACATGACTATTACTAATGACTACCAGCACCTGCTGGTCAATTCATTGCAAACCTTTTCCGCT
 TGTATCTCAGGGGGTGGAAAAATCAAGGTTGAGATTCTAAAAATCCTTTCAAACCTTTGCTGAAAAATCC
 AGACATGCTAAAGAACTTCTGGTACCAAGTGCCGTCATTCAGTTCCTTTATAATTCTTATGTG
 GAATCAGAAATCTTATTAATGCCCTTACTCTATTTGAGATTATCTTTGACAACCTCAGAGCAGAAGTGT
 TCAACTACAGGAATTCACAAGGGTCCCTGTTTTACTTATGTACTACATCTGGGGTGTGTGTAAGAA
 AATTCGAGCCTTAGCAAATCACCATGACCTCTTGGTAAAAGTAAAAGTTATAAGCTGGTAAACAAATTC

ACGCGTACGCGGCCGCTCGAGCAGAAACTCATCTCAGAAGAGGATCTGGCAGCAATGATATCCTGGATT
 ACAAGGATGACGACGATAAGGTTTAA

Protein Sequence: >RR203967 representing NM_001014274
 Red=Cloning site Green=Tags(s)

MSRARDAGCVAAGIVIGASAWYCVYKYTRGKEQKKKRLAKPKNRSVGTGTRARAGLRAGFTIDLGPGFN
 PPTPVSVETMNKAEAEASSLATAVAEVAPTAPSPKVQNGAERKVQELKSGTEANMESIVMTSAACAVTPP
 PKVTGPLTAAEAPEIVGGPKVVETSSTTEASAASLGPVSPRVAQSPGPAAPSPSIVSPGPTAIPWAV
 AHPGTVQSPGSAATAMAVQSLVPASPSWAVVAPPGAVYIPVAAHFTGPAAPRITQSPGTVIPPLPPPSS
 VLPRGVPTVPTRTVQSPGAAVHPVAAQSPGVVPPRTVQYSGATVPSGAPATPRAAASTQRAATTEVPRAA
 APAEATGTPGTGTPAVVAEASLPMHSGAAETPGTSGSSKTAATGKKAAPGVHTGAIPKTGAATGAVPKGG
 GKGGNKNRSGGKGNRKNKVEVDELGMGFRPGDAAAAAASANGGQAF LAEIPESSEGESGWTDTESDS
 DSEPEVQQRGKGRKRTIPMHKRPFPYEIDEILGVRDLRKVLALLQKSDDPFIQQVALLTLSNNANYSNCQE
 TIRKLGGLPIIANMINKTDPHIKEKALMAMNLSHENYENQRLQVYMNKVMDDVMASNLNSAVQVVLKLF
 LTNMTITNDYQHLLVNSIANFFRLLSQGGGKIKVEILKILSNFAENPDMLKLLGTQVPSFSSLYNSYV
 ESEILINALTLFEIIFDNLRAEVFNREFNKGSLFYLCCTSGVCVKKIRALANHHDLLVKVKVIKLVNKF

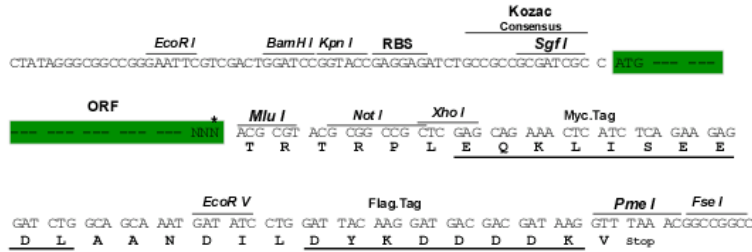
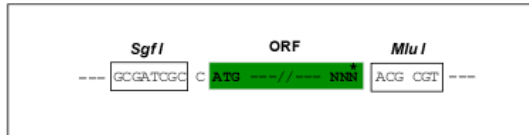
TRTRPLEQKLI SEEDLAANDILDYKDDDDKV

Restriction Sites:

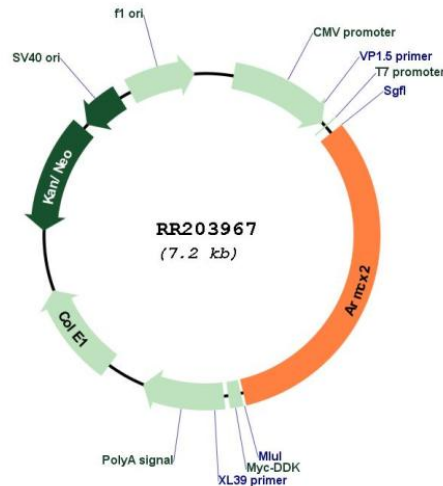
Sgfl-MluI

Cloning Scheme:

Cloning sites used for ORF Shuttling:



* The last codon before the Stop codon of the ORF

Plasmid Map:


ACCN: NM_001014274

ORF Size: 2310 bp

OTI Disclaimer: The molecular sequence of this clone aligns with the gene accession number as a point of reference only. However, individual transcript sequences of the same gene can differ through naturally occurring variations (e.g. polymorphisms), each with its own valid existence. This clone is substantially in agreement with the reference, but a complete review of all prevailing variants is recommended prior to use. [More info](#)

OTI Annotation: This clone was engineered to express the complete ORF with an expression tag. Expression varies depending on the nature of the gene.

Components: The ORF clone is ion-exchange column purified and shipped in a 2D barcoded Matrix tube containing 10ug of transfection-ready, dried plasmid DNA (reconstitute with 100 ul of water).

Reconstitution Method:

1. Centrifuge at 5,000xg for 5min.
2. Carefully open the tube and add 100ul of sterile water to dissolve the DNA.
3. Close the tube and incubate for 10 minutes at room temperature.
4. Briefly vortex the tube and then do a quick spin (less than 5000xg) to concentrate the liquid at the bottom.
5. Store the suspended plasmid at -20°C. The DNA is stable for at least one year from date of shipping when stored at -20°C.

RefSeq: [NM_001014274.1](#), [NP_001014296.1](#)

RefSeq Size: 3320 bp

RefSeq ORF: 2313 bp

Locus ID: 367903
Cytogenetics: Xq32
MW: 79.9 kDa