

Product datasheet for **RR203965**

Lmbrd1 (NM_139189) Rat Tagged ORF Clone

Product data:

| | |
|--------------------|---|
| Product Type: | Expression Plasmids |
| Product Name: | Lmbrd1 (NM_139189) Rat Tagged ORF Clone |
| Tag: | Myc-DDK |
| Symbol: | Lmbrd1 |
| Vector: | pCMV6-Entry (PS100001) |
| E. coli Selection: | Kanamycin (25 ug/mL) |
| Cell Selection: | Neomycin |



[View online »](#)

ORF Nucleotide Sequence:

>RR203965 representing NM_139189
 Red=Cloning site Blue=ORF Green=Tags(s)

TTTTGTAATACGACTCACTATAGGGCGGCCGGAATTCGTCGACTGGATCCGGTACCGAGGAGATCTGCC
 GCC**CGGATCGCC**

ATGGCGGGCGGCTGCCGATCTGGTGATCGGCTGGTGCATCTTCGGCCTTTGCTCCTGGCTATTTTGG
 CCTTTTGTCTGGGTATACGTTTCGTAATACCAGAGCCAACGGGAAAGTGAGGTCGTCTCCACTGTGACAGC
 CATTTTTTCACTGGCTGTCGCGCTTATCACATCAGCGCTCCTGCCAGTGGATATATTTTTGGTTTCTTAC
 ATGAAAAATCAAATGGCACATTCAAGGACTGGGCTAATGCCAATGCTACTGTACAGATTGAGAACACAG
 TTCTGTATGGCTACTATACTCTGTACTCCGTCATCCTGTTCTGTGTGTTCTTCTGGATCCCTTTGTCTA
 CTTCTACTATGAGGAGAAGGACGACGACACCAGCAAGTGCACCAAGTTAAAACGGCGCTCAAGTAC
 AACTGGGATTTGTTGTGATCTGCGCGCTGCTGCTCCTTGTGGTGCCTTTGTGCCGCTGAATCTGCCCA
 ACAACAACAATTCTACGGAGTGGGAAAAGGTGAAGCTCCTGTTTGAAGATCTCGGAAGTGGTCAAGTCT
 GGCCGCGCTGTCCTTCTCCATCAGCTCTCTGACCTTGATTGGGATGCTGGCGGCCATAACATACACAGCG
 TATGGCATGTCCGCATTACCTTTAAACCTGATAAAAGGCACTAGGAGCACTGCCTACGAACGCTGGAGA
 AACTGAGGACATCGAGGAGTGGAGCAGCACATCCAGACGATTGATCAAAAGAGCAAAGATGGCCGACC
 TTTGTCCGCGAGGGATAGACGTACCTTAAAGCAATGTGAAGAAAGATTAAAGAACCTTAGGAAAAGAGAA
 CGGCACCTAGAATTCATTGAAAACAGCTGGTGGACAAAATTTCTGTGGTGCCTGCGCCCCCTGAAGATTA
 TTTGGGAATATTTTTCATCCTGGTTGCATTGCTGTTTGAATTTCTCTTCTCTGTCAAATTTAGATAA
 AGCTCTTCACTCAGCGGGAATAGATTCGGGTTTCATCGCTTTTGGAACTAACCTGAGCAATCCATTGAAC
 ATGCTTTTGCCTTTGTTACAACCGTGTCCCTCTTGATTATATCTTATAACAATTTATTATGTAAT
 TTATTTTTACTTCGATGGCAGGAATTCGAAATATTGGCATTGGTTCTTTTGGATTAGACTATATAAAAT
 CAGAAGAGGACGAACCGGCTCAGCGCTCTTATTTCTCTGCATGATTCTTCTGCTGATTGTCCTCCAC
 ACCAGCTACATGATCTATAGTCTTGTCTCCTCAGTACGTGATGTACGGAAGCCAGAATTACTTAATAGAGA
 GCAATATAACTTCTGATGCCATAAAGGCAACTCAACGCTTGTGTGCCAAAGAGATGTGATGCAGATGC
 CCCAAAAGATCAGTGTACTGTCACCCGAACATACGTATTCTCCACAAGTTCTGGTTCTTTCAGCGCCGCA
 TACTACTTTGGTAACTGGGCCTTTCTGGTGGTGTCTTGTATCGGATTGATTGTATCTGCTGTAAGGGA
 AGAAGTCAGTCATAGAAGGAGTGGATGAAGATTCAGACTTAAGCGATGACGAACCGTCCGCTACTCTGC
 AA

ACGCGTACGCGGCCGCTCGAGCAGAAACTCATCTCAGAAGAGGATCTGGCAGCAAATGATATCCTGGATT
 ACAAGGATGACGACGATAAGGTTTAA

Protein Sequence:

>RR203965 representing NM_139189
 Red=Cloning site Green=Tags(s)

MAAAAADLVIGWCIFGLLLLAILAFCWVYVRKYQSQRESEVVSTVTAIFSLAVALITSALLPVDIFLVSY
 MKNQNGTFKDWANANVTQIENTVLGYGYTLYSVILFCVFFWIPFVYFYEEKDDDDTSKCTQVKTALKY
 TLGFVVICALLLLVGAFVPLNLPNNNNSTEWKVKLLFEDLGTGQGLAALSFSISSLTLIGMLAAITYTA
 YGMSALPLNLIKGTRSTAYERLENTEDEIEVEQHIQTIRSKSKDGRPLSARDRRTLKQCEERLRTLKRE
 RHLEFIENSWWTKFCGALRPLKIIWGIFFILVALLFVLSLFLSNLDKALHSAGIDSGFIVFGTNLSNPLN
 MLLPLLQTVFPLDYILITIIIMYIFITSMAGIRNIGIWFVWIRLYKIRRGTRPQALLFLCMILLIIVLH
 TSYMIYSLAPQYMYGSQNYLIESNITSDAHKGNSTLAVPKRCDADAPKQCTVTRTYVFLHKFWFFSAA
 YYFGNWAFLVVFLIIGLIVSCCKGKKSVEGVDSDLSDEPSAYSA

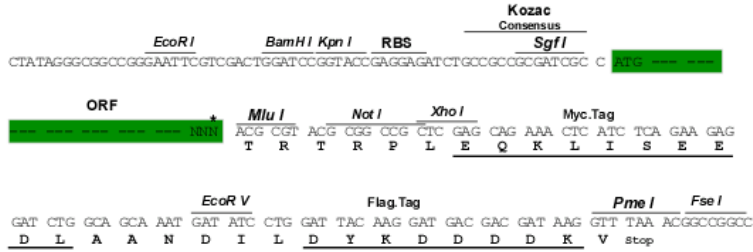
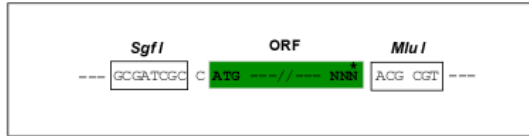
TRTRPLEQKLISEEDLAANDILDYKDDDDKV

Restriction Sites:

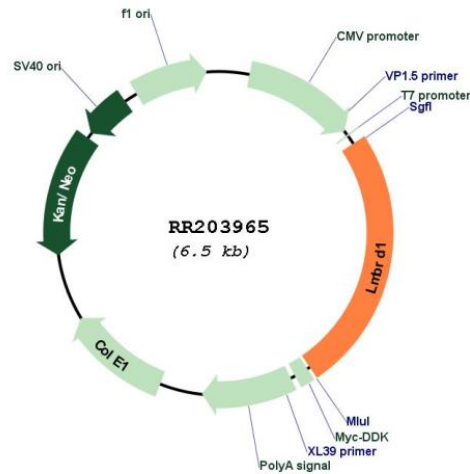
Sgfl-MluI

Cloning Scheme:

Cloning sites used for ORF Shutting:



* The last codon before the Stop codon of the ORF

Plasmid Map:


ACCN: NM_139189

ORF Size: 1611 bp

OTI Disclaimer: The molecular sequence of this clone aligns with the gene accession number as a point of reference only. However, individual transcript sequences of the same gene can differ through naturally occurring variations (e.g. polymorphisms), each with its own valid existence. This clone is substantially in agreement with the reference, but a complete review of all prevailing variants is recommended prior to use. [More info](#)

OTI Annotation: This clone was engineered to express the complete ORF with an expression tag. Expression varies depending on the nature of the gene.

Components: The ORF clone is ion-exchange column purified and shipped in a 2D barcoded Matrix tube containing 10ug of transfection-ready, dried plasmid DNA (reconstitute with 100 ul of water).

Reconstitution Method:

1. Centrifuge at 5,000xg for 5min.
2. Carefully open the tube and add 100ul of sterile water to dissolve the DNA.
3. Close the tube and incubate for 10 minutes at room temperature.
4. Briefly vortex the tube and then do a quick spin (less than 5000xg) to concentrate the liquid at the bottom.
5. Store the suspended plasmid at -20°C. The DNA is stable for at least one year from date of shipping when stored at -20°C.

RefSeq: [NM_139189.2](#), [NP_631928.2](#)

RefSeq Size: 2576 bp

RefSeq ORF: 1614 bp

Locus ID: 246046

UniProt ID: [Q6AZ61](#)

Cytogenetics: 9q21

MW: 61 kDa

Gene Summary: Probable lysosomal cobalamin transporter. Required to export cobalamin from lysosomes allowing its conversion to cofactors (By similarity).[UniProtKB/Swiss-Prot Function]