

## Product datasheet for **RR203952**

### Mnda (NM\_001012029) Rat Tagged ORF Clone

#### Product data:

Product Type:	Expression Plasmids
Product Name:	Mnda (NM_001012029) Rat Tagged ORF Clone
Tag:	Myc-DDK
Symbol:	Mnda
Synonyms:	lfi204; rHin-3
Vector:	pCMV6-Entry (PS100001)
E. coli Selection:	Kanamycin (25 ug/mL)
Cell Selection:	Neomycin
ORF Nucleotide Sequence:	>RR203952 representing NM_001012029 Red=Cloning site Blue=ORF Green=Tags(s)

TTTTGTAATACGACTCACTATAGGGCGCCGGGAATTCGTCGACTGGATCCGGTACCGAGGAGATCTGCC  
GCC**CGATCGCC**

ATGTCAAATGAATATAAGAGAATCGTTCTGTTGAAAGGACTTGAACCTCTCAGTAGTCATCATTTTAGCT  
TATTTAAGTCATTGCTGGCCAGTGATTTAAAACGGAGAGACACATGCAGGAGCAATACACCAAGGTCCA  
GATTGCTGACATGATGGAAGATGAATCCAGATGATGCTGGATTGGCAAATTCATCAAATTTGTGAA  
GACTTACCAGCTCTAGAAAACGTGCTGAAATCTTAAAAGAGAGAGAATACAAGTAAGAGGAGAAACCC  
CACGGGAAATAAATAGGCGAGAACCAGGTCCGTCAAGACCTTCATCAACTGCAAGCCATATGATAGTGTC  
TGAAGGATGGGAGACTTCCACAGCTCAGGCAGAGACCTCCACAGCTCAGGGAGAGCCTTCTACAGCTCAG  
AAAAGAAAAAGTATGAGCGAAGGAAAGACTGAAGTGAAAAAGACCAAGGCATCAGAGAGACCAGATCAGC  
CTCCCTGTCTGAAGAAGCCACAGCCAAGTGTCTGTCCACCAATACCCAGACTTCGTCTTTGGCTCCATG  
TAACTCTCCTTTGGCTAAGTGTTCAATGGAGAACCAAAATATACAGACCCAAAACCAGAACATCCCAGA  
GGCGCTGTTCTCAAACAGAACCCTGACAGTGATGGTGCTCAAAGCAACAGACCCATTTGAATATGAAT  
CAGCAGAACATGGAGTGAAGAACATGTTTCTTGCTACAGTGTTACTGTGACCGGTATTTCCATGTGAA  
AGTTTTCAACAGCAACTGAAAGAGAAGTTCAAAAAATAATTTTATCATCATTTCCAATTACTCAAG  
AGGACAGACATCCTAGAGATCAATGAAGCTTCCCTTGTGTGAGAGGCTGCTCCTGACAAAAAGATTGCAG  
TGCCCAACAAACGTATCAAAGAGGCAAAAAATCTCCTAAAATCCGTGATATTAAGAGGGTACTTCAAG  
GGATCTGTTTTATGGAGTGTTCATTAATCAAGAAAAAGTGTGCCAAAGAACACAATCTATGAACTA  
AAAGATGATACAGGAAATATAGAAGTGGTGGGAGTGGAAAAATGGTACAACATCAACTGTAAACGAAGGAG  
ATAACTTCAAACCTTTCTGCTTTCACCTGAAAACAATTGACAGGCAACAAAAATAGTGTGTGGAAAGCA  
CAGTTTTATCAAGGTCACCAGAGCTCGGAAAAAAGGAAGCAGCCACTGCCATCCAAGCACAAAAAAG  
GAAGAAGGAACTCACTACCTAAAGACAATTCATGCTTTTAAAGAAGAGAAA

**ACGCGT**ACGCGGCCGCTCGAGCAGAAACTCATCTCAGAAGAGGATCTGGCAGCAAATGATATCCTGGATT  
ACAAGGATGACGACGATAAGGTTTAA



[View online »](#)

**Protein Sequence:** >RR203952 representing NM\_001012029  
Red=Cloning site Green=Tags(s)

MSNEYKRIVLLKGLEPLSSHHSFLFKSLLASDLKLERHMQEQYTKVQIADMMEDEFPPDDAGLGKFIKFCF  
 DLPALRKRAEILKRERIQVRGETPREINRREPGRSPSSSTASHMIVSEGWETSTAQAETSTAQGEPTAQ  
 KRKSMSEKTEVKKTKASERPDQPPCPEEATAKCLSPIPQTSSLAPCNSPLAKCSMENQNIQTQONIPR  
 GAVLQTEPLTVMVLKATDPFEYESAEHGVKNMFLATVVTVDRYFHVKVFNSNLKEKFKKNNFIIISNYFK  
 RTDILEINEASLVSEAAPDKKIAVPNKRIKEAKKSPKIRDIKEGTSRDLYFGVFTLIKKKVKPKNTIYEL  
 KDDTGNIEVVGSGKWNINCNEGDNFQLFCFHLKTI DRQQLVCGKHSFIKVTRAREKKEAATAHPSTKK  
 EEGTHYPKDKFNFAKKEEK

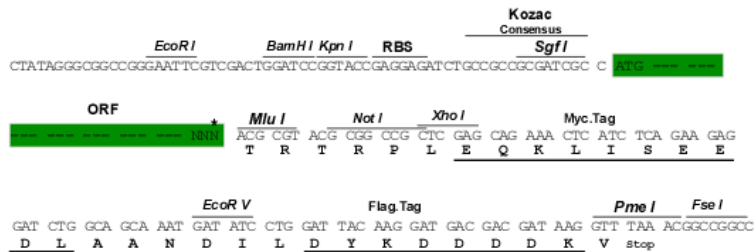
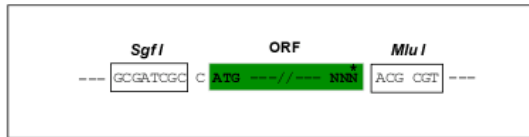
TRTRPLEQKLISEEDLAANDILDYKDDDDKV

**Restriction Sites:**

SgfI-MluI

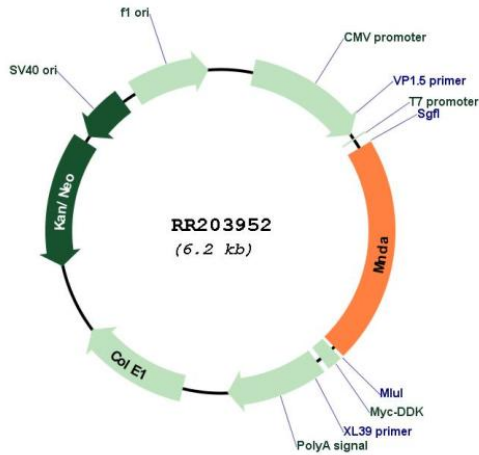
**Cloning Scheme:**

Cloning sites used for ORF Shuttling:



\* The last codon before the Stop codon of the ORF

**Plasmid Map:**



**ACCN:**

NM\_001012029

<b>ORF Size:</b>	1314 bp
<b>OTI Disclaimer:</b>	The molecular sequence of this clone aligns with the gene accession number as a point of reference only. However, individual transcript sequences of the same gene can differ through naturally occurring variations (e.g. polymorphisms), each with its own valid existence. This clone is substantially in agreement with the reference, but a complete review of all prevailing variants is recommended prior to use. <a href="#">More info</a>
<b>OTI Annotation:</b>	This clone was engineered to express the complete ORF with an expression tag. Expression varies depending on the nature of the gene.
<b>Components:</b>	The ORF clone is ion-exchange column purified and shipped in a 2D barcoded Matrix tube containing 10ug of transfection-ready, dried plasmid DNA (reconstitute with 100 ul of water).
<b>Reconstitution Method:</b>	<ol style="list-style-type: none"><li>1. Centrifuge at 5,000xg for 5min.</li><li>2. Carefully open the tube and add 100ul of sterile water to dissolve the DNA.</li><li>3. Close the tube and incubate for 10 minutes at room temperature.</li><li>4. Briefly vortex the tube and then do a quick spin (less than 5000xg) to concentrate the liquid at the bottom.</li><li>5. Store the suspended plasmid at -20°C. The DNA is stable for at least one year from date of shipping when stored at -20°C.</li></ol>
<b>RefSeq:</b>	<a href="#">NM_001012029.1</a> , <a href="#">NP_001012029.1</a>
<b>RefSeq Size:</b>	1768 bp
<b>RefSeq ORF:</b>	1317 bp
<b>Locus ID:</b>	304988
<b>Cytogenetics:</b>	13q24
<b>MW:</b>	49.7 kDa