

## Product datasheet for **RR203939**

### Arhgap17 (NM\_022244) Rat Tagged ORF Clone

#### Product data:

Product Type:	Expression Plasmids
Product Name:	Arhgap17 (NM_022244) Rat Tagged ORF Clone
Tag:	Myc-DDK
Symbol:	Arhgap17
Synonyms:	Rich1
Mammalian Cell Selection:	Neomycin
Vector:	pCMV6-Entry (PS100001)
E. coli Selection:	Kanamycin (25 ug/mL)



[View online »](#)

**ORF Nucleotide Sequence:**

>RR203939 representing NM\_022244  
 Red=Cloning site Blue=ORF Green=Tags(s)

TTTTGTAATACGACTCACTATAGGGCGGCCGGGAATTCGTCGACTGGATCCGGTACCGAGGAGATCTGCC  
 GCC**CGGATCGCC**

ATGAAGAAGCAATTCAACCCGATGAAGCAGCTGGCCAACCCAGACTGTCGGCAGAGCTGAGAAGACAGAAG  
 TCCTCAGTGAAGATCTGCTACAGATTGAACGTCGACTGGACACTGTGCGGTCAATGTGCCACCATTCA  
 TAAGCGTTTGATAGCCTGCTTCCAAGGTCAGCATGGCACCGATGCTGAGAGGAGACATAAAAAGTTCCT  
 CTGACAGCTCTCGCCAGAACATGCAGGAAGCTTCAGCCAGCTGGAAGAGTCTCTCTTGGGGAAGATGC  
 TGGAAACCTGTGGGGATGCTGAGAATCAGCTGGCTTTTGAACCTCTCAGCATGAGGTCTTTGTGGAGAA  
 GGAGATCATGGACCCTCTACGGCATAGCGGAGGTGGAGATTCCAACATCCAAAAGCAAAGGAAACAG  
 CTTGCTAGATTGGTGTGGACTGGGATTAGTCAGAGCAAGATGGAACCAAGCACACAAGTCTTCAGGAA  
 CCAACTTTCAGGGACTTCCATCTAAAATAGATACCCTAAAGGAAGAGATGGATGAAGCTGGAATAAAGT  
 CGAGCAGTGAAGGATCAACTTGCAGCAGACATGTACAACCTCATGGCCAAGAAGGGGAATACGGCAAG  
 TTCTTTGTGACGTTATTAGAAGCCCAAGCAGATTACCATAGAAAAGCATTAGCAGTCTTAGAAAAGGCC  
 TTCCCGAAATGCGCGCCCATCAAGATAAATGGGCAGAGAAGCCAGCCTTCGGTACACCTCTGGAGGAACA  
 CCTGAAGAGGAGTGGACGTGAGATCGCTCTCCCTATTGAGGCCTGCGTCACTGTTGTTACTGGAGACTGGC  
 ATGAAGGAGGAGGGCCTTTTTCGGATCGGAGCTGGAGCCTCCAAGTTGAAGAAGCTGAAAGCTGCTCTCG  
 ACTGCTCCACGTCTCACCTGGATGAGTTCTATTCAGACCCCCATGCTGTGCGCAGGTGCTTTAAAGTCTTA  
 TTTGCGGGAAGTGCCTGAGCCCTAATGACTTTTCACTGTATGAAGAGTGGACACAAGTTGCAAGTGTG  
 CAGGATCAAGACAAAAAAGTCAATATTTATGGACAACATGTGAGAAGTTGCCGCCACAAAAATTTGTTA  
 ACTTTAGGTATTTAATCAAGTTCTTGCAAAGCTCGCCAGACCCAGTATGTTAATAAAAAGTCACTCTAG  
 CAACATAGCCATCGTGTGGGCCCTAACCTCCTGTGGGCCAAACAAGAAGGAACCCCTGGCTGAAATAGCG  
 GCTGCCACATCTGTCCAGTGGTTCGAGTATTGAACCTATCATCCAGCATGCCGATTGGTTCTTCCCCG  
 GAGAGGTAGAATCAATGTATCAGAAGCATTCTGCTCTTGCTACCCCAAAATCTAATCACTCATCCCA  
 TACTGGAATGACTCTGACTCGGGGACTCTGGAGAGGAAGCGACCCGCCAGCATGGCAGTATGGAAGGG  
 GACTTGGTGAAGAAGGAGAGTCTCCAAAACCCAAAGACTCTGTGTCTGCAGCTGCCCTGTGGCAGGAA  
 GAAACAGCAACCAGATAACCACGGTCCCAAACCCAGGCCAGACAGGTGGCAACTCCCATCAGCTCTCAGT  
 AGGCACAGCTCACAGTGCAGCTGGCCCCAGCCGCACACTCTGCGTCGAGCTGTGAAGAAACCTGCTCCG  
 GCACCCCCAAACCAGGAACCCACCTCCTGGCCACCCTGGAGGACAGAGCTCTCCAGGCACAGGCACAT  
 CCCCAGCAAGCAAGCACCAGGCCATCACCGCTCAGCAGCAGCAGCAGCAACAACAACAACAGCA  
 GCAGCAACAACAACAGCAGCAACAACAACAACAACAACAGCAGCAGCAGCAGACCCCGGGCATGCGCCGC  
 GTTCCAGCAGCTGCCTCCTATCCAGGCACCCAAACCACCACCACCCGACGCCCCCCACACAGCCTCGGC  
 TGGGTGAACAGGGACCAGAGCCAGGCCACGCCACCTCAGACCCCCACACCACCAGCACCACCCCC  
 GGCCAAGCAGAATTCATCCCAAAGCGAGACCACACAGTGCATGGAACCCCTCCAAGGCCACGGCCAGTG  
 CCTAAACCCCGCAACCGGCTAGTGTGCCACCACCCCGAATCCACCTGGCACCCACATGGGGGATGGTG  
 GCCTCACACCTTCAGTGGCCACAGCTCCAGAATCGTCACTGACACCAATTCTAGGGTTTCTGAATCACT  
 TCGAAACATCTTCTGAAATACATTAGACTTGGCAAGCAAGAAGTGCCTGGCCATATCTGCTGGAC  
 ATAGACAATGACACAGAGAGCACCGCCTTG

**ACGCGT**ACGCGGCCGCTCGAGCAGAAACTCATCTCAGAAGAGGATCTGGCAGCAAATGATATCTGGATT  
 ACAAGGATGACGACGATAAGGTTTAA

**Protein Sequence:** >RR203939 representing NM\_022244  
 Red=Cloning site Green=Tags(s)

```

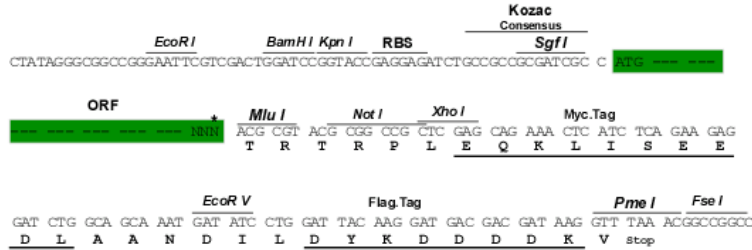
MKKQFNRMKQLANQTVGRAEKTEVLSDDLQIERRLDTVRSMCHHSHKRLIACFQGQHGTAERRHKKLP
LTALAQNMQEASQALESLLGKMLETCGDAENQLAFELSQHEVFVEKEIMDPLYGIAEVEIPNIQQRKQ
LARLVLDWDSVRARWNQAHKSSGTNFQGLPSKIDTLKEEMDEAGNKVEQCKDQLAADMVNFMAKEGEYK
FFVTLLLEAQADYHRKALAVLEKALPEMRAHQDKWAEKPAFGTPLEEHLKRSGREIALPIEACVMLLLETG
MKEEGLFRIGAGASKLKKLKAALDCSTSHLDEFYSDPHAVAGALKSYLRELPEPLMTFSLYEEWTQVASV
QDQDKKLQYLWTTCCQKLPPQNFVNFYRLIKFLAKLAQTSVNMKTPSNIATVLPNLLWAKQEGTLAEIA
AATSVHVAVIEPIIQHADWFFPGEVEFNVSEAFVPLATPNSNHSSHTGNDSDSGTLERKRPASMAVMEG
DLVKKESPPKPKDSVSAAPVAGRNSNQITTVPNQAQTGGNSHQLSVGTAHSAAGPSPTLRRVKKPAP
APPKPGNPPPGHPGGQSSPGTGTSPKPSTRSPSPPPQQQQQQQQQQQQQQQQQQQQQQQQQQQTPGMRR
CSSSLPPIQAPNHPPQPPTQPRLGEQGPEPGTTPPQTPPPSTPPPAKQNSSQSETTQLHGTLRPRPV
PKPRNRPSVPPPPNPPGTHMGDGLTPSVPTASRIVTDTNSRVSESLRNIFPEIHSDLASKEVPGHILLD
IDNDTESTAL
  
```

TRTRPLEQKLISEEDLAANDILDYKDDDDKV

**Restriction Sites:** Sgfl-Mlul

**Cloning Scheme:**

Cloning sites used for ORF Shutting:



\* The last codon before the Stop codon of the ORF

**ACCN:** NM\_022244

**ORF Size:** 2340 bp

**OTI Disclaimer:** The molecular sequence of this clone aligns with the gene accession number as a point of reference only. However, individual transcript sequences of the same gene can differ through naturally occurring variations (e.g. polymorphisms), each with its own valid existence. This clone is substantially in agreement with the reference, but a complete review of all prevailing variants is recommended prior to use. [More info](#)

**OTI Annotation:** This clone was engineered to express the complete ORF with an expression tag. Expression varies depending on the nature of the gene.

**Components:** The ORF clone is ion-exchange column purified and shipped in a 2D barcoded Matrix tube containing 10ug of transfection-ready, dried plasmid DNA (reconstitute with 100 ul of water).

**Reconstitution Method:**

1. Centrifuge at 5,000xg for 5min.
2. Carefully open the tube and add 100ul of sterile water to dissolve the DNA.
3. Close the tube and incubate for 10 minutes at room temperature.
4. Briefly vortex the tube and then do a quick spin (less than 5000xg) to concentrate the liquid at the bottom.
5. Store the suspended plasmid at -20°C. The DNA is stable for at least one year from date of shipping when stored at -20°C.

**RefSeq:** [NM\\_022244.2](#), [NP\\_071580.1](#)

**RefSeq Size:** 3144 bp

**RefSeq ORF:** 2343 bp

**Locus ID:** 63994

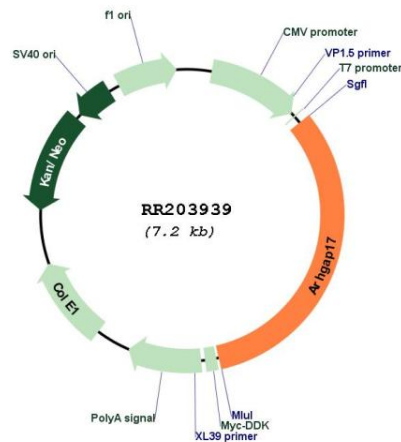
**UniProt ID:** [Q99N37](#)

**Cytogenetics:** 1q36

**MW:** 85.8 kDa

**Gene Summary:** activates RhoA, Rac1, and Cdc42 GTPases, plays a role in regulation of calcium ion dependent exocytosis, may regulate actin filament reorganization [RGD, Feb 2006]

### Product images:



Circular map for RR203939