

## Product datasheet for **RR203912**

### Mrps34 (NM\_001105771) Rat Tagged ORF Clone

#### Product data:

Product Type: Expression Plasmids  
Product Name: Mrps34 (NM\_001105771) Rat Tagged ORF Clone  
Tag: Myc-DDK  
Symbol: Mrps34  
Mammalian Cell Selection: Neomycin  
Vector: pCMV6-Entry (PS100001)  
E. coli Selection: Kanamycin (25 ug/mL)  
ORF Nucleotide Sequence: >RR203912 representing NM\_001105771  
Red=Cloning site Blue=ORF Green=Tags(s)

TTTTGTAATACGACTCACTATAGGGCGGCCGGGAATTCGTCGACTGGATCCGGTACCGAGGAGATCTGCC  
GCC**CGATCGCC**

ATGGCGCGGAAGAAAGTGAACCCCGGCTGATCGCTGAGCTGGCCCGCCGCTGCGCGCCTTGCGCGAGC  
AGCGGAACCAGCCGCGAGACTCGCAGCTCTACGCCCTAGACTACGAGACGCTGACCCGGCCGCACTCTGG  
TCGCCGGCTGCCAGTGCAGCCCTGGGCCGACGTACGTCGCGAGAGCCGCTTCTACAGCTGCTCGCCCGC  
CTCCCCTTGTTGGCCCTGGGTCTGTTACCCGCAAGTCTGGCTGTGGCAGCAGCAGGAGCCATGCT  
ACTGGCCCTCACGCGTGTGAGGCTGACTACACGGCGCAGAATTGGACCACGGGAGGGCTGGGAT  
CCTGACTTTCAAAGGGAAGAGTGAGGAAACGGCTCGGGAAATCGAGCAAGTCATGTACCAGATTGGCGG  
TTGGTACCCAAGCACGAGGAGGAGGCTTCACTGCGTTCACTGGGAAAGCAGAGGACAGATTGAACCTTG  
TCCCCTACCCACCTCTGCTGCGGGCCATGATCCTCGCTGAGCGACAGAAAAACGGGGATACCAGCGTCA  
GGAGCCGCTCCTGAACCTGGAGAGGACTCGAATGCGCCCTGGGACTACCCTGCAAAACAGGAGACTAA  
GGGAGAGCCAAGGGCACCCAGTC

AG**CGGACCG**ACGCGTACGCGGCCGCTCGAGCAGAACTCATCTCAGAAGAGGATCTGGCAGCAAATGATATCC  
TGGATTACAAGGATGACGACGATAAGGTTTAA

Protein Sequence: >RR203912 representing NM\_001105771  
Red=Cloning site Green=Tags(s)

MARKKVKPRLIAELARRVRALREQRNQRDSQLYALDYETLTRPHSGRRLPVRWADVRRESRLQLLAR  
LPLFGLGRLVTRKSWLWQHDEPCYWRLTRVRPDYTAQNLDHGRAWGILTFKKGSEETAREIEQVMYHDWR  
LVPKHEEEAFTAFGKAEDRLNLVYPPLLRAMILAERQKNGDTSVEEPLLNLERTRMRPWDYPKQETK  
GRAKGPV

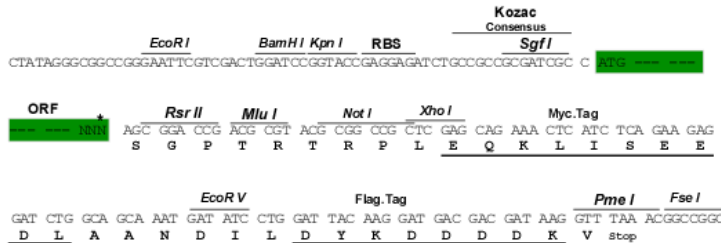
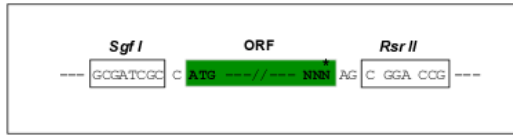
**SGP**TRTRPLEQKLISEEDLAANDILDYKDDDDKV



**Restriction Sites:** SgfI-RsrII

**Cloning Scheme:**

Cloning sites used for ORF Shutting:



\* The last codon before the Stop codon of the ORF

**ACCN:** NM\_001105771

**ORF Size:** 654 bp

**OTI Disclaimer:** The molecular sequence of this clone aligns with the gene accession number as a point of reference only. However, individual transcript sequences of the same gene can differ through naturally occurring variations (e.g. polymorphisms), each with its own valid existence. This clone is substantially in agreement with the reference, but a complete review of all prevailing variants is recommended prior to use. [More info](#)

**OTI Annotation:** This clone was engineered to express the complete ORF with an expression tag. Expression varies depending on the nature of the gene.

**Components:** The ORF clone is ion-exchange column purified and shipped in a 2D barcoded Matrix tube containing 10ug of transfection-ready, dried plasmid DNA (reconstitute with 100 ul of water).

**Reconstitution Method:**

1. Centrifuge at 5,000xg for 5min.
2. Carefully open the tube and add 100ul of sterile water to dissolve the DNA.
3. Close the tube and incubate for 10 minutes at room temperature.
4. Briefly vortex the tube and then do a quick spin (less than 5000xg) to concentrate the liquid at the bottom.
5. Store the suspended plasmid at -20°C. The DNA is stable for at least one year from date of shipping when stored at -20°C.

**RefSeq:** [NM\\_001105771.1](#), [NP\\_001099241.1](#)

**RefSeq Size:** 901 bp

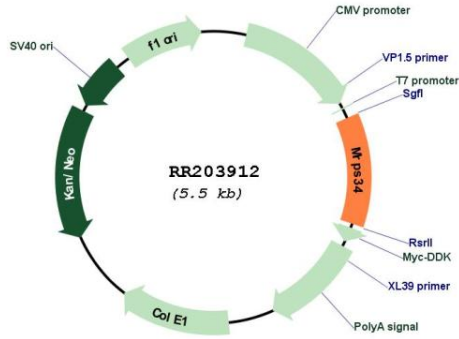
**RefSeq ORF:** 657 bp

**Locus ID:** 287126

**Cytogenetics:** 10q12

MW: 25.8 kDa

Product images:



Circular map for RR203912