

Product datasheet for **RR203883**

Abt1 (NM_001025674) Rat Tagged ORF Clone

Product data:

Product Type: Expression Plasmids
Product Name: Abt1 (NM_001025674) Rat Tagged ORF Clone
Tag: Myc-DDK
Symbol: Abt1
Synonyms: MGC116249
Vector: pCMV6-Entry (PS100001)
E. coli Selection: Kanamycin (25 ug/mL)
Cell Selection: Neomycin
ORF Nucleotide Sequence: >RR203883 representing NM_001025674
Red=Cloning site Blue=ORF Green=Tags(s)

TTTTGTAATACGACTCACTATAGGGCGGCCGGGAATTCGTCGACTGGATCCGGTACCGAGGAGATCTGCC
GCC**CGGATCGC**C

ATGGTGAAAGTAGGAAAGCTGGTGGAGGAGCAAAGGCCGGCGATGGAGGAAGAGAAAGAGGTGAATGCAG
AGGCCGGCGGAGGAGCTGGAGGAGGCCGAGGAAGCGTCTGCAACGGCAGCAAGAAGAAGGTAGTCCGGG
TATTGTGTAAGTGGGCCACGTCCCGCCGCGATTCCGGCCCTGCACGTTGCAACCTGCTCAGCGTCTAC
GGTGAGGTGGGACGCGTTTTCTCCAGGCCGAGGACCCCTTTGTGAGACGAAAAAGAAGGCAGCCGCGG
CTGCAGGAGGAAAGAAGGGAGCTAAATACAGCAAGGACTATACCGAAGGCTGGGTGGAGTCCGAGACAA
ACGCATAGCCAAGCGAGTGGCAGCTAGTCTACATAACACACCCATGGGTGCCCGCAAGCGCAGTCCCTTC
CGTTATGACCTGTGGAACCTCAAGTATTTGCATCGTTTTACTTGGTCCCACCTCAGTGAACACCTTGCT
TTGAGCGCCAGGTACGAAGGCAACGCCTGAGAGCAGAGGTTGCCAAGCGAAACGAGAGACTGACTTCTA
TCTTCGAAACGTAGAACAGGGACAACGCTTTCTGACGCTGATGGGGATGCTACTCGACCAAATAGCTCC
TGGACATTTACTCAACGTCCCACTGAGCAGGAGCTGAGGGCCAGAAAGGAGCACGGCCAGGAGGGCGGG
AACGAGCTCGGCTGGCCACAGTCCAGGACCAGGCCGATCCAACAGAGGGCTACTTGCCAGGATCTTTGG
GCCTCTCTACTTGCAGAGAGCAGGAAAGAACC

AG**CGGACCG**ACGCGTACGCGGCCGCTCGAGCAGAACTCATCTCAGAAGAGGATCTGGCAGCAAATGATATCC
TGGATTACAAGGATGACGACGATAAGGTTTAA



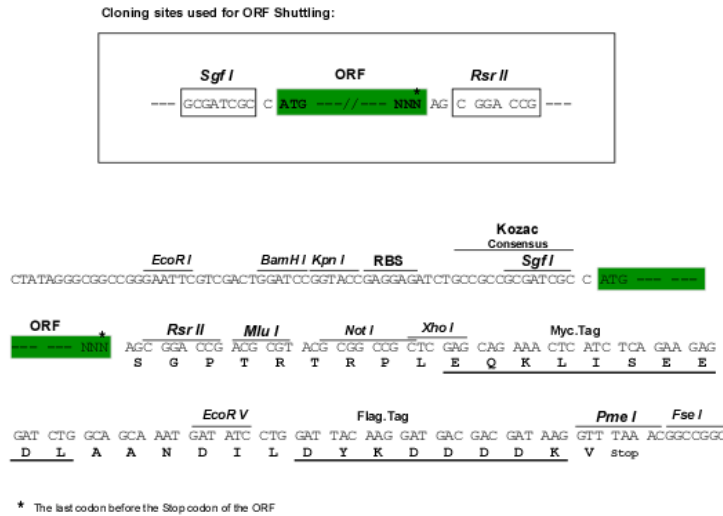
Protein Sequence: >RR203883 representing NM_001025674
 Red=Cloning site Green=Tags(s)

MVKVGLVVEEQKAAMEEEKEVNAAEELEEAEASCNGSKKKVVPVGIYVYLGHVPPFRPLHVRNLLSVY
 GEVGRVFFQAEDPFVRRKKKAAAAGGKKGAKYSKDYTEGWVEFRDKRIAKRVAASLHNTPMGARKRSPF
 RYDLWNLKYLHRFTWSHLSEHLAFERQVRRQRLRAEVAQAKRETD FYLRNVEQQRFLAADGDATRPNSS
 WFTTQRPTQEQLRAQKARPGGRRERARLATVQDQARSNRGLLARIFGASLLAESRKEP

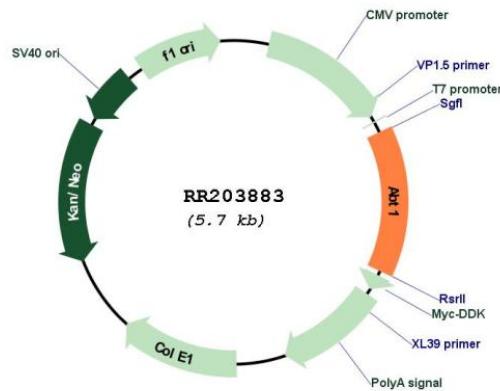
SGPTRTRPLEQKLI SEEDLAANDILDYKDDDDKV

Restriction Sites: SgfI-RsrII

Cloning Scheme:



Plasmid Map:



ACCN: NM_001025674

ORF Size: 804 bp

OTI Disclaimer:	The molecular sequence of this clone aligns with the gene accession number as a point of reference only. However, individual transcript sequences of the same gene can differ through naturally occurring variations (e.g. polymorphisms), each with its own valid existence. This clone is substantially in agreement with the reference, but a complete review of all prevailing variants is recommended prior to use. More info
OTI Annotation:	This clone was engineered to express the complete ORF with an expression tag. Expression varies depending on the nature of the gene.
Components:	The ORF clone is ion-exchange column purified and shipped in a 2D barcoded Matrix tube containing 10ug of transfection-ready, dried plasmid DNA (reconstitute with 100 ul of water).
Reconstitution Method:	<ol style="list-style-type: none">1. Centrifuge at 5,000xg for 5min.2. Carefully open the tube and add 100ul of sterile water to dissolve the DNA.3. Close the tube and incubate for 10 minutes at room temperature.4. Briefly vortex the tube and then do a quick spin (less than 5000xg) to concentrate the liquid at the bottom.5. Store the suspended plasmid at -20°C. The DNA is stable for at least one year from date of shipping when stored at -20°C.
RefSeq:	NM_001025674.1 , NP_001020845.1
RefSeq Size:	1319 bp
RefSeq ORF:	807 bp
Locus ID:	306960
UniProt ID:	Q4KLM5
Cytogenetics:	17p11
MW:	30.6 kDa
Gene Summary:	May be a novel TATA-binding protein (TBP) which can function as a basal transcription activator. Can act as a regulator of basal transcription for class II genes (By similarity). [UniProtKB/Swiss-Prot Function]