

## Product datasheet for **RR203867**

### Lss (NM\_031049) Rat Tagged ORF Clone

#### Product data:

Product Type:	Expression Plasmids
Product Name:	Lss (NM_031049) Rat Tagged ORF Clone
Tag:	Myc-DDK
Symbol:	Lss
Mammalian Cell Selection:	Neomycin
Vector:	pCMV6-Entry (PS100001)
E. coli Selection:	Kanamycin (25 ug/mL)



[View online »](#)

ORF Nucleotide  
Sequence:

>RR203867 representing NM\_031049  
 Red=Cloning site Blue=ORF Green=Tags(s)

TTTTGTAATACGACTCACTATAGGGCGGCCGGGAATTCGTCGACTGGATCCGGTACCGAGGAGATCTGCC  
 GCC**CGGATCGCC**

ATGACCGAGGGCACGTGTCTGCGCGCTCGTGGGGACCCTATAAACTGAGCCCGCCACCGATCTCACCC  
 GCTGGCGGCTCCATAATGAGTTGGGTCGGCAGAGATGGACTTATTATCAAGCGGAGGAGACCCTGGTCCG  
 AGAACAGACGGGGCTAGAGGCCCACTCTTTGGGACTGGACACAACAAGTTATTTCAAGAACTTACCTAAA  
 GCTCAAACAGCCCATGAGGGGGCCCTGAACGGAGTAACCTTTTATGCCAAGCTGCAGGCTGAGGATGGAC  
 ACTGGGCTGGTGATTATGGTGGTCCACTTTCCTCTTGCCAGGTCTCCTGATTACGTGTCACATAGCACA  
 CATCCCCCTGCCGGCTGGATACAGAGAGAAATGGTACGGTACTTGCCTCAGTGCAGCTTCCCAATGGC  
 GGCTGGGCTTGACATTGAGGACAAGTCCACGGTGTGGGACTGCCCTGAGCTATGTGTCTCTCAGAA  
 TCCTGGGTATTGGACCTGATGATCCTGACCTTGTGCGTGTCCGAACATTCTTCAAAAAAGGTGGTGC  
 AGTGGCCATCCCTTCTGGGGAAAGTTCTGGCTGGCTGTCTGAATGTTTACAGCTGGGAAGGAATCAAT  
 ACCCTCTCCCTGAGATGTGGCTGCTTCTGAATGGTTTCTGCACATCCCTCCACTCTGTGGTGTCACT  
 GCCGGCAGGTCTATCTGCCCATGAGCTACTGCTACGCCACTCGGTAAGTGCCTCAGAGGACCCACTGGT  
 TCAGAGCCTCCGCCAGGAAGTCTATGTGGAGGATTATGCCAGCATCGATTGGCCAGCACAGAAGAACAAC  
 GTGTGCCCCGATGACATGTACACGCCACACAGCTGGTGTGCACGTGGTATATGGACTCCTCAACCTGT  
 ATGAACGTTTCCACAGTACCAGCCTGCGGAAGTGGGCCATCCAGTTGCTGTATGAACATGTCGCAGCTGA  
 TGATCGGTTACAGAAATGCATCAGCATTGGCCCGATCTCAAAACTGTCAACATGCTTATTCGTTGGTCA  
 TGGACGGACCATCCTCCCCTGCCTTCCAGGAGCAGTCTCGAGGATCAAAGATTATCTTTGGCTGGGCC  
 TTGACGGCATGAAAATGCAGGGCACCAATGGATCACAGACTGGGACACTTCATTTGCTCCAAGCCCT  
 GCTGGAGGCAGGTGCACACCGAAGACCTGAGTTTTTGCCTGCCTGCAGAAGGCTCACGAGTTCCTGCGG  
 CTTTCCAGGTCCAGACAACAATCCTGACTACCAGAAGTATTATCGCCATATGCACAAGGTGGTTTCC  
 CCTCAGCAGTGGACTGTGGCTGGATCGTTGCTGACTGCACGGCCGAGGCTTTGAAGGCTGTGCTGCT  
 CCTGCAGGAGCGGTGCCCTCAATCACCAGCATGTCCCCGAGAGCGACTCTACGATGCTGTGGCTGTG  
 TTGTTGAGCATGAGGAATCCGATGGAGGGTTGCTACCTATGAGACTAAGCGTGGCGGGTATTTGCTGG  
 AGCTGCTGAACCCCTCAGAGGTCTTTGGAGACATCATGATTGACTACACGTATGTAGAGTGTACCTCCGC  
 AGTGATGCAGGCCCTGAGGCACTTCCGCGAGTACTTCCAGACCACAGGGCTACAGAGATCAGGGAGACC  
 CTAATCAAGGCCTGGACTTCTGCCGAAAGAAGCAGAGAGCGGATGGCTCGTGGGAGGGCTCCTGGGGG  
 TTTGCTTACCTATGGCACCTGGTTTGGCTTGGAAAGCATTTCGCTTGCATGGGACATATCTACCAAAATAG  
 GACTGCTTGTGCAGAAGTAGCTCAGGCCTGCCACTTCTCCTGTGCGGGCAGATGGCGGATGGGGCTGG  
 GGGGAGGACTTTGAGTCTGTGAGCAGCGCGGTACGTGCAGAGTGCCGGGTCCCAGGTCCATAGTACGT  
 GCTGGGCCCTGTGGTTTGTGGCTGTGAGGCATCCCGACATCTGCTCAGGAGAGAGGAATCAGATG  
 TCTGCTAGGGAACAGCTCCCCAACGGAGACTGGCCTCAGGAGAACATCTCTGGGGTCTTCAACAAGTCC  
 TGTGCCATCAGCTACACAAATTACAGAAACATCTCCCATCTGGGCCCTGGGCCGCTTCTCCAGCCTGT  
 ATCCTGACAATACCCTTGTGGCCACATTATCCTGACAATACCCTTGTGGCCACATT

**ACGCGT**ACGCGGCCGCTCGAGCAGAAACTCATCTCAGAAGAGGATCTGGCAGCAAATGATATCCTGGATT  
 ACAAGGATGACGACGATAAGGTTTAA

**Protein Sequence:** >RR203867 representing NM\_031049  
 Red=Cloning site Green=Tags(s)

MTEGTCLRRRGGPYKTEPATDL TRWRLHNELGRQRWYTYQAEEDPGREQTGLEAHSGLDSTSYFKNLPK  
 AQTAEHALNGVTFYAKLQAEDGHWAGDYGGPLFLLPGLLITCHIAHIPLPAGYREEMVRYLRSVQLPNG  
 GWGLHIEDKSTVFGTALSYYSLRILGIGPDDPLVRARNILHKKGGAVAIPSWGKFWLAVLNVSWEIN  
 TLFPEMWLLPEWFAHPSTLWCHCRQVYLPMSYCYATRLSASEDPLVQSLRQEL YVEDYASIDWPAQKNN  
 VCPDDMYTPHSWLLHVYGLLNL YERFHSTSLRKWAIQLLYEHVAADDRFTKCISIGPISKTVNMLIRWS  
 YDGPSSPAFQEHVSRIKDYLWGLDGMKMQGTNGSQTWDTSFVQALLEAGAHRRPEFLPCLQKAHEFLR  
 LSQVPDNNPDYQKYRHMHKGGFPFSTLDCGWIVADCTAEALKAVLLLQERCPSITEHVPRERLYDAVAV  
 LLSMRNSDGGFATYETKRGGYLLELLNPSEVFGDIMIDYTYVECTSAVMQALRHFREYFPDHRATEIRET  
 LNQGLDFCRKKQRADGSWEGSWGVCFTYGTWFGLEAFACMGHIYQNRACAEVAQACHFLLSRQMADGGW  
 GEDFESCEQRRYVQSAGSQVHSTCWALLGLMAVRHPDISAQERGI RCLLGKQLPNGDWPQENISGVFNKS  
 CAISYTYNRNIFPIWALGRFSSLYPDNTLAGHII LTIPLLAT

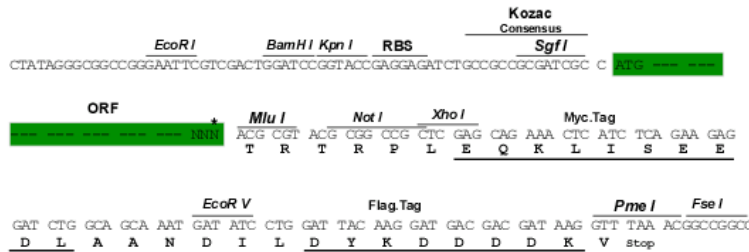
TRTRPLEQKLI SEEDLAANDILDYKDDDDKV

**Restriction Sites:**

SgfI-MluI

**Cloning Scheme:**

Cloning sites used for ORF Shuttling:



\* The last codon before the Stop codon of the ORF

**ACCN:** NM\_031049

**ORF Size:** 2199 bp

**OTI Disclaimer:** The molecular sequence of this clone aligns with the gene accession number as a point of reference only. However, individual transcript sequences of the same gene can differ through naturally occurring variations (e.g. polymorphisms), each with its own valid existence. This clone is substantially in agreement with the reference, but a complete review of all prevailing variants is recommended prior to use. [More info](#)

**OTI Annotation:** This clone was engineered to express the complete ORF with an expression tag. Expression varies depending on the nature of the gene.

**Components:** The ORF clone is ion-exchange column purified and shipped in a 2D barcoded Matrix tube containing 10ug of transfection-ready, dried plasmid DNA (reconstitute with 100 ul of water).

**Reconstitution Method:**

1. Centrifuge at 5,000xg for 5min.
2. Carefully open the tube and add 100ul of sterile water to dissolve the DNA.
3. Close the tube and incubate for 10 minutes at room temperature.
4. Briefly vortex the tube and then do a quick spin (less than 5000xg) to concentrate the liquid at the bottom.
5. Store the suspended plasmid at -20°C. The DNA is stable for at least one year from date of shipping when stored at -20°C.

**RefSeq Size:** 2851 bp

**RefSeq ORF:** 2202 bp

**Locus ID:** 81681

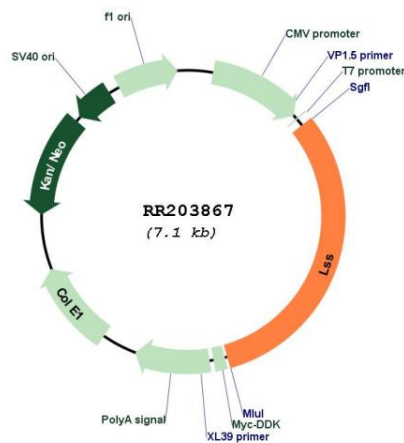
**UniProt ID:** [P48450](#)

**Cytogenetics:** 20p12

**MW:** 83.3 kDa

**Gene Summary:** enzyme that catalyzes the cyclization of (S)-2,3 oxidosqualene to lanosterol [RGD, Feb 2006]

**Product images:**



Circular map for RR203867