

Product datasheet for **RR203862**

Asah2 (NM_053646) Rat Tagged ORF Clone

Product data:

Product Type:	Expression Plasmids
Product Name:	Asah2 (NM_053646) Rat Tagged ORF Clone
Tag:	Myc-DDK
Symbol:	Asah2
Vector:	pCMV6-Entry (PS100001)
E. coli Selection:	Kanamycin (25 ug/mL)
Cell Selection:	Neomycin



[View online »](#)

ORF Nucleotide
Sequence:

>RR203862 representing NM_053646
Red=Cloning site Blue=ORF Green=Tags(s)

TTTTGTAATACGACTCACTATAGGGCGGCCGGAATTCGTCGACTGGATCCGGTACCGAGGAGATCTGCC
GCCGCGATCGCC

ATGGCAAAGCGAACCTTCTCCTCCTTGGAGGCGTTCTCATTTTCTTCTGGTAATGATGACGGCCATCA
CAGTGGCCCTTCTCACCTCTTGTTCGTACCAGTGGGACCATCGAAAACCACAAAGATTCAGGGAATCA
CTGGGTTTCAACCACCCAGGGCCCCACAACCACCCAGTCTCTCCAACCACAAAACCTCCAACCACAA
ACTCCAGACTCCCTCCCTCTCAGAACTTCAGTGGCTACTACATTGGTGTGGGGCAGCTGACTGCACCG
GACAAGTGTGAGATATCAATTTGATGGGCTATGGCAAAAATGGCCAGAACGCACAGGGTCTCCTCACCG
GCTGTTACGCGCGCTTTTATCTTGGCGGATCCAGATGGGTCAAATCGAATGGCATTGTGAGCGTGAA
CTATGCATGATTTCCCAACGACTCAGGTTGGAGGCTTGAAGAGACTACAGAGTAAATATGGCTCTCTGT
ATCGAAGAGACAACGTTATCCTGAGTGCCTCACACTACTCTGGCCCAGCAGGATTTTCCAATATAC
ACTCTATATACTTGCCAGCGAGGATTCAGCAACCGGACCTTTTCTAGTACATAGTCTCTGGGATCGTGAAG
AGCATTGATATAGCACACACAAATCTTAAACCGGGCAAAGTCTTATCAACAAAGGAAATGTTGCTAATG
TGCAGATCAACCCGAGTCCCTCCTTACCTTCAGAATCCACCTTCGGAGAGAGCAAGGTATTCTCCGA
CACGGACAAGGAAATGGTCGTCTTGAACCTGGTGGATTGAAATGGAGAAGACTTGGGCCTTATCAGCTGG
TTTGCCGTCCACCCCGTGAAGCAACAGTAAACCTCGTCAACAGTGACAATATGGGCTACGCGG
CTTACCTTTTTCGAGCAAGAAAAGAACAGAGGCTATCTGCCTGGACAGGGACCATTCGTAGCAGGCTTTGC
TTCATCAAATCTCGGAGACGTGTGCCAACATTTTGGCCACATTGTGTCAACACAGGGGAGTCTTGT
GACAACGACAAAAGCACCTGTCCAGTGGTGGGCTAGCATGTGCATGGCCAGTGGACCCGGACAAGATA
TGTTTGAGAGCACACACATTATAGGACGGGTCATCTATCAGAAAGCCAAGGAGCTGCATGCCTCTGCCTC
CCAGGAAGTGACCGGCCAGTGTCTCACAGCTCACAGTGGGTGAACATGACGGATGTGAGCGTCCAACCTC
AATGCCACACACAGTGAAGACGTGTAAGGCCCTGGGCTACAGTTTTGCCGAGGCACAATTGATG
GAGTTTGGGCTCAATATTACACAGGGAACAACAGAAGGGAATCTATTTTGGGACTCTTCGGGACCA
GCTCTTGGGAAAACCATCTGAAGAAATCATAGAATGCCAGAACTAAACCAATCCTAATCCACACGGGA
GAGCTGACAAAACCTCATCCTTGGCAACCAGATATTGTTGATATTCAGATCGTACTCTTGGTTCGTTGG
CCATAGCTGCTATCCCTGGGGAATTTACAACCATGTCAGGTCGAAGACTTCGTGAGGCAGTTAAAAAAGA
ATTTGCACTTTATGGGATGAAGGATATGACTGTCGTTATCGCAGGGCTGAGCAATGTTTATACCCATTAC
ATTACCACATATGAAGAATACCAGGCTCAGCGGTATGAGGCAGCATCTACGATTTATGGACCACACACC
TGTCTGCGTACATCCAGCTCTTCCAGAGCCCTTGCTAAGGCCATTGCTACGGATACAGTAGCCAACATGAG
CAGCGGTCTGAGCCTCATTCTTCAAAAACCTGATAGTTCACTTATTCCCTAATATTGGCGATAGAGCA
CCAATAGGCAAACAATTTGGGGATGTCCTGCAGCCAGCAAAACCTGAATACAGAGTGGGAGAAGTGGTTG
AAGTTGTCTTTGAGGCGCTAACCCAAAGAATTCAGCAGAAAACCCAGACCCATCAAACCTTCTCACTGT
GGAGAAATACGAGGACTCTGTAGCCAATGGCAGATAATGCATAACGATGCCTCTGGGAGACGAGATTT
TATTGGACAAGGGAGTACTGGGCTGAGCAATGCAACAATACATTGGCATATCCAGATACTGCCCTCC
CTGGAGTCTACAGAATCAGATATTTGGACACAATCGGAAGCAGGAACCTCTAAAGCCTGCTGTCATACT
AGCATTGAAGGAATTTCTCCCTTTTGAATTTGCTACTACT

ACGCGTACGCGGCCGCTCGAGCAGAACTCATCTCAGAAGAGGATCTGGCAGCAAATGATATCCTGGATT
ACAAGGATGACGACGATAAGGTTTAA

Protein Sequence: >RR203862 representing NM_053646
 Red=Cloning site Green=Tags(s)

MAKRTFSSLEAFLIFLLVMMTAITVALLTLLFVTSGTIENHKDSGNHWVSTTQGPTTTQSSPTTQTPTTQ
 TPDLPSPQNFSGYYIGVGRADCTGQVSDINLMGYGKNGQNAQGLLTRLFSRAFILADPDGNSRMAFVSVE
 LCMISQRLRLEVLKRLQSKYGSLYRRDNVILSATHTHSGPAGFFQYTLYLASEGF SNRTFQYIVSGIVK
 SIDIAHTNLKPGKVLINKGNVANVQINRSPSSYLQPPSERARYSDDTKEMVVLKLDLNGEDLGLISW
 FAVHPVSMNNSNHLVNSDNMGYAYLFEQEKNRGYLPGQGPFVAGFASSNLGDVSPNILGPHCVNTGES
 DNDKSTCPSGGPSMCASGPGQDMFESTHIIGRVIYQKAKELHASASQEVTPVLTAHQVWNMTDVSQV
 NATHTVKTCKAALGYSFAAGTIDGVSGLNITQGTTEGNLFWDTLRDQLLQKPSSEEIECQKPKPILHTG
 ELTKPHWPQDVIDIQIVTLGSLAIAAIPGEFTTMSGRRLREAVKKEFALYGMKDMTVVIAGLSNVYTHY
 ITTYEYQAQRYEAASTIYGPHLSAYIQLFRALAKAIATDTVANMSSGPEPPFFKNLIGSLIPNIADRA
 PIGKQFGDVLQPAKPEYRVGEVVEVVFVGANPKNSAENQTHQFTLVEKYEDSVANWQIMHNDASWETRF
 YWHKGVGLSNATIHWHIPDTPALPGVYRIRYFGHNRKQELLKPAVILAFEGISSPFEIVTT

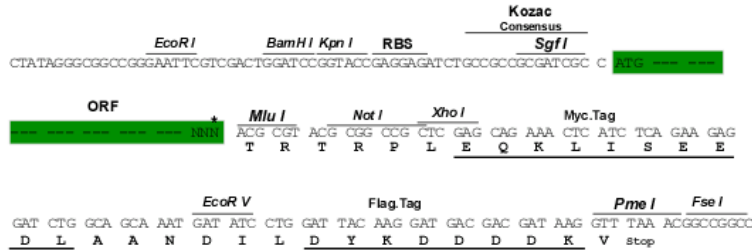
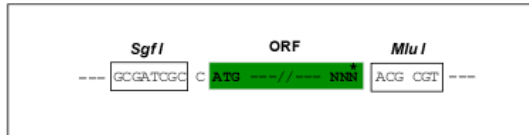
TRTRPLEQKLISEEDLAANDILDYKDDDDKV

Restriction Sites:

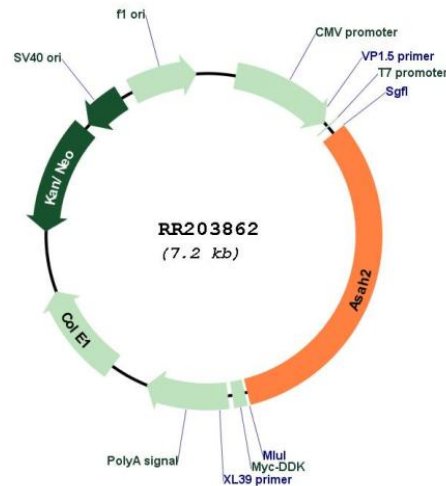
Sgfl-MluI

Cloning Scheme:

Cloning sites used for ORF Shuttling:



* The last codon before the Stop codon of the ORF

Plasmid Map:


ACCN: NM_053646

ORF Size: 2283 bp

OTI Disclaimer: The molecular sequence of this clone aligns with the gene accession number as a point of reference only. However, individual transcript sequences of the same gene can differ through naturally occurring variations (e.g. polymorphisms), each with its own valid existence. This clone is substantially in agreement with the reference, but a complete review of all prevailing variants is recommended prior to use. [More info](#)

OTI Annotation: This clone was engineered to express the complete ORF with an expression tag. Expression varies depending on the nature of the gene.

Components: The ORF clone is ion-exchange column purified and shipped in a 2D barcoded Matrix tube containing 10ug of transfection-ready, dried plasmid DNA (reconstitute with 100 ul of water).

Reconstitution Method:

1. Centrifuge at 5,000xg for 5min.
2. Carefully open the tube and add 100ul of sterile water to dissolve the DNA.
3. Close the tube and incubate for 10 minutes at room temperature.
4. Briefly vortex the tube and then do a quick spin (less than 5000xg) to concentrate the liquid at the bottom.
5. Store the suspended plasmid at -20°C. The DNA is stable for at least one year from date of shipping when stored at -20°C.

RefSeq: [NM_053646.2](#), [NP_446098.1](#)

RefSeq Size: 4914 bp

RefSeq ORF: 2286 bp

Locus ID: 114104
UniProt ID: [Q91XT9](#)
Cytogenetics: 1q52
MW: 83.5 kDa
Gene Summary: membrane-bound neutral ceramidase; hydrolyzes the N-acyl linkage of ceramide to produce sphingosine [RGD, Feb 2006]