

## Product datasheet for **RR203861**

### PPP2CA (NM\_017039) Rat Tagged ORF Clone

#### Product data:

**Product Type:** Expression Plasmids  
**Product Name:** Ppp2ca (NM\_017039) Rat Tagged ORF Clone  
**Tag:** Myc-DDK  
**Symbol:** Ppp2ca  
**Synonyms:** Pp2a1  
**Vector:** pCMV6-Entry (PS100001)  
**E. coli Selection:** Kanamycin (25 ug/mL)  
**Cell Selection:** Neomycin  
**ORF Nucleotide Sequence:** >RR203861 representing NM\_017039  
**Red=Cloning site Blue=ORF Green=Tags(s)**

TTTTGTAATACGACTCACTATAGGGCGCCGGAATTCGTCGACTGGATCCGGTACCGAGGAGATCTGCC  
GCC**CGGATCGCC**

ATGGACGAGAAGTTGTTACCAAGGAGCTGGACCAGTGGATCGAGCAGCTGAACGAGTGAAGCAGCTCT  
CCGAGTCCAGGTCAAGAGCCTCTGCGAGAAGGCTAAAGAAATCCTGACAAAAGAATCTAATGTTTCAGGA  
GGTTCGATGTCCAGTCACTGTGTGGAGATGTGCATGGGCAATTCATGACCTCATGGAACCTTTAGA  
ATTGGTGGTAAATCACCAGATACAAATTAAGTTGTTTATGGGAGACTATGTGGACAGAGGATATTACTCAG  
TTGAAACAGTTACTACTGCTTGTAGCTCTTAAGGTTTCGTTACCGAGAGCGTATCACCATACTCCGAGGGAA  
TCACGAGAGCAGACAGATCACACAAGTTTATGGTTTCTACGATGAGTGTAAAGGAAATACGGAAATGCA  
AATGTTTGGAAATACTTCACAGACCTTTTTGACTACCTTCCTCTCACTGCCTTGGTGGATGGGCAGATCT  
TCTGTCTACATGGTGGTCTTTACCATCCATAGACACACTGGATCACATCCGAGCACTTGATCGCCTACA  
AGAAGTTCCTCATGAGGGTCCAATGTGTGACTTGCTGTGGTCAGATCCAGATGACCGTGGTGGCTGGGG  
ATATCTCCTCGGGGAGCTGGTTATACCTTTGGCCAAGATATTTCTGAGACATTTAATCATGCCAATGGCC  
TCACGTTGGTGTCCAGAGCTCACCAGCTGGTGTGGAGGATATAACTGGTGCCATGACCGGAATGTAGT  
AACAAATTTTCAGTGTCCAAACTATTGCTATCGTTGTGGTAACCAAGCTGCAATCATGGAACCTTGATGAC  
ACTCTTAAGTATTCTTTCTTGCAGTTCGATCCAGCACCTCGTAGAGGCGGACCATGCTACTCGTCGTA  
CCCCAGACTACTTCTCTG

**ACGCGT**ACGCGGCCGCTCGAGCAGAAACTCATCTCAGAAGAGGATCTGGCAGCAAATGATATCCTGGATT  
ACAAGGATGACGACGATAAGGTTTAA



[View online »](#)

**Protein Sequence:** >RR203861 representing NM\_017039  
Red=Cloning site Green=Tags(s)

MDEKLFTEKLDQWIEQLNECKQLSESQVKSLCEKAKEILTKESNVQEVRCPVTVCGDVHGQFHDLMELEFR  
 IGGKSPDTNYLFMGDYVDRGYYSVETVLLVALKVRYRERITILRGNHESRQITQVYGFYDECLRKYGNA  
 NVWKYFTDLFDYLPALTALVDGQIFCLHGGLSPSIDTLDHIRALDRLQVEPHEGPMCDLLWSDPDDRGGWG  
 ISPRGAGYTFGQDISETFNHANGTLVSRHQQLVMEGYNWCHDRNVVTFISAPNYCYRCGNQAAIMELDD  
 TLKYSFLQFDPAPRRGEPHVTRTRTPDYFL

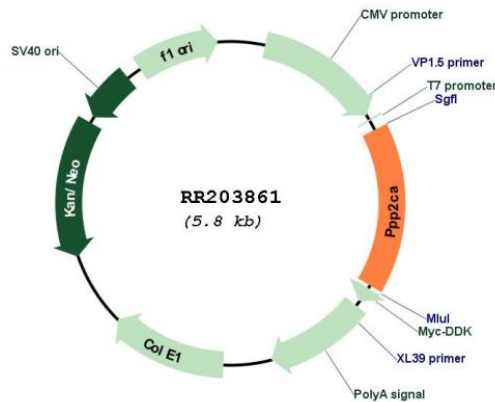
TRTRPLEQKLISEEDLAANDILDYKDDDDKV

**Restriction Sites:** SgfI-MluI

**Cloning Scheme:**



**Plasmid Map:**



**ACCN:** NM\_017039

**ORF Size:** 927 bp

<b>OTI Disclaimer:</b>	The molecular sequence of this clone aligns with the gene accession number as a point of reference only. However, individual transcript sequences of the same gene can differ through naturally occurring variations (e.g. polymorphisms), each with its own valid existence. This clone is substantially in agreement with the reference, but a complete review of all prevailing variants is recommended prior to use. <a href="#">More info</a>
<b>OTI Annotation:</b>	This clone was engineered to express the complete ORF with an expression tag. Expression varies depending on the nature of the gene.
<b>Components:</b>	The ORF clone is ion-exchange column purified and shipped in a 2D barcoded Matrix tube containing 10ug of transfection-ready, dried plasmid DNA (reconstitute with 100 ul of water).
<b>Reconstitution Method:</b>	<ol style="list-style-type: none"> <li>1. Centrifuge at 5,000xg for 5min.</li> <li>2. Carefully open the tube and add 100ul of sterile water to dissolve the DNA.</li> <li>3. Close the tube and incubate for 10 minutes at room temperature.</li> <li>4. Briefly vortex the tube and then do a quick spin (less than 5000xg) to concentrate the liquid at the bottom.</li> <li>5. Store the suspended plasmid at -20°C. The DNA is stable for at least one year from date of shipping when stored at -20°C.</li> </ol>
<b>RefSeq:</b>	<a href="#">NM_017039.2</a> , <a href="#">NP_058735.1</a>
<b>RefSeq Size:</b>	1915 bp
<b>RefSeq ORF:</b>	930 bp
<b>Locus ID:</b>	24672
<b>UniProt ID:</b>	<a href="#">P63331</a>
<b>Cytogenetics:</b>	10q22
<b>MW:</b>	35.6 kDa
<b>Gene Summary:</b>	catalyzes the removal of serine- and threonine- bound phosphate groups [RGD, Feb 2006]