

## Product datasheet for **RR203751**

### Lpar2 (NM\_001109109) Rat Tagged ORF Clone

#### Product data:

**Product Type:** Expression Plasmids  
**Product Name:** Lpar2 (NM\_001109109) Rat Tagged ORF Clone  
**Tag:** Myc-DDK  
**Symbol:** Lpar2  
**Synonyms:** Edg4; RGD1561336  
**Vector:** pCMV6-Entry (PS100001)  
**E. coli Selection:** Kanamycin (25 ug/mL)  
**Cell Selection:** Neomycin  
**ORF Nucleotide Sequence:** >RR203751 representing NM\_001109109  
Red=Cloning site Blue=ORF Green=Tags(s)

TTTTGTAATACGACTCACTATAGGGCGCCGGGAATTCGTCGACTGGATCCGGTACCGAGGAGATCTGCC  
GCC**CGGATCGCC**

ATGGGCCAGTGCTACTACAATGAGACCATCGGCTTTTTCTATAATAACAGCGGCAAGGAGCTCAGCCTTC  
ACTGGCGCCCAAAGATGTGGTGGTGGCCCTGGGGCTGACAGTCAGTGTGCTGGTATTGCTGACCAA  
CCTGCTGGTTATTGCAGCCATTGCCTCCAACCGACGCTTCCACCAGCCATATACTACCTGCTTGGCAAC  
TTGGCTGCAGCTGACCTCTTCGCTGGCATGGCCTACCTCTTCTCATGTTCCATACTGGCCCCGACCCG  
CCAGGCTCTCCATCAAAGGCTGGTTCCTGCGACAGGGCCTGCTGGACACCAGCCTCACGGCATCGGTGGC  
CACGTTGCTGGCCATTGCTGTGGAACGGCACCGCAGTGTGATGGCTGTGCAGCTGCACAGCCGCTTGCC  
CGGGTGTGTTGGTCACTCATCGTGGGAGTGTGGTGGCTGCGCTGGGTCTGGGGTGTGCTGCCTGCAC  
ACTTCTGGCACTGCCTCTGTGACTTGGACAGCTGCTCACGAATGGTGGCCCTGTTTCAGCCGCTCCTACCT  
GGCTGTGTTGGCCCTATCCAGCCTGCTTGTCTTCTACTCATGGTAGCCGCTACACACGAATTTTCTTC  
TTTGTGCGCAGACGGGTTGAACGCATGGCAGAGCAGTCAGCTGCCATCCCCGCTACCGAGAGACAACGC  
TCAGCCTAGTCAAGACAGTTGTATCATTCTGGGGCATTGTGGTGTGCTGGACACCGGGCCAGGTGG  
TGCTGCTCTTGGACGGTCTGGACTG

**ACGCGT**ACGCGGCCGCTCGAGCAGAAACTCATCTCAGAAGAGGATCTGGCAGCAAATGATATCCTGGATT  
ACAAGGATGACGACGATAAGGTTTAA



[View online »](#)

**Protein Sequence:** >RR203751 representing NM\_001109109  
Red=Cloning site Green=Tags(s)

MGQCYNETIGFFYNNSGKELSLHWRPKDVVVVALGLTVSVLVLLTNLLVIAAIASNRRFHQPIYYLLGN  
 LAAADLFAGMAYLFLMFHTGPR TARLSIKGWFLRQGLDLSLTASVATLLAIAVERHRSVMVAVQLHSRLP  
 RGRVVT LIVGVVAALGLGLLP AHFWHCLCDLDCSRMVPLFSR SYLAVWALSSLLVFLLMVAVYTRIFF  
 FVRRRVERMAEHVSCHPRYRETTLSLVKTVVIIILGAFVVCWTPGPGGAALGRSGL

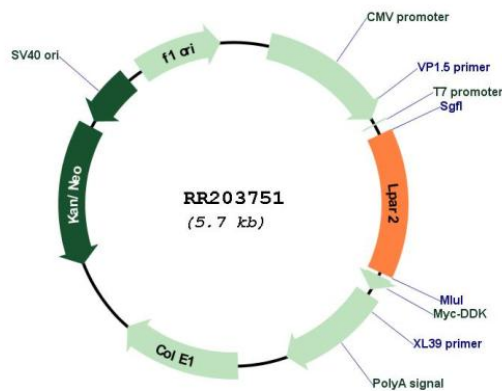
TRTRPLEQKLISEEDLAANDILDYKDDDDKV

**Restriction Sites:** SgfI-MluI

**Cloning Scheme:**



**Plasmid Map:**



**ACCN:** NM\_001109109

**ORF Size:** 795 bp

<b>OTI Disclaimer:</b>	The molecular sequence of this clone aligns with the gene accession number as a point of reference only. However, individual transcript sequences of the same gene can differ through naturally occurring variations (e.g. polymorphisms), each with its own valid existence. This clone is substantially in agreement with the reference, but a complete review of all prevailing variants is recommended prior to use. <a href="#">More info</a>
<b>OTI Annotation:</b>	This clone was engineered to express the complete ORF with an expression tag. Expression varies depending on the nature of the gene.
<b>Components:</b>	The ORF clone is ion-exchange column purified and shipped in a 2D barcoded Matrix tube containing 10ug of transfection-ready, dried plasmid DNA (reconstitute with 100 ul of water).
<b>Reconstitution Method:</b>	<ol style="list-style-type: none"> <li>1. Centrifuge at 5,000xg for 5min.</li> <li>2. Carefully open the tube and add 100ul of sterile water to dissolve the DNA.</li> <li>3. Close the tube and incubate for 10 minutes at room temperature.</li> <li>4. Briefly vortex the tube and then do a quick spin (less than 5000xg) to concentrate the liquid at the bottom.</li> <li>5. Store the suspended plasmid at -20°C. The DNA is stable for at least one year from date of shipping when stored at -20°C.</li> </ol>
<b>RefSeq:</b>	<u>NM_001109109.1, NP_001102579.1</u>
<b>RefSeq Size:</b>	2836 bp
<b>RefSeq ORF:</b>	798 bp
<b>Locus ID:</b>	498609
<b>Cytogenetics:</b>	16p14
<b>MW:</b>	29.5 kDa