

Product datasheet for **RR203661**

Itgb4 (NM_013180) Rat Tagged ORF Clone

Product data:

Product Type: Expression Plasmids
Product Name: Itgb4 (NM_013180) Rat Tagged ORF Clone
Tag: Myc-DDK
Symbol: Itgb4
Vector: pCMV6-Entry (PS100001)
E. coli Selection: Kanamycin (25 ug/mL)
Cell Selection: Neomycin
ORF Nucleotide Sequence: >RR203661 representing NM_013180
Red=Cloning site Blue=ORF Green=Tags(s)

TTTTGTAATACGACTCACTATAGGGCGGCCGGAATTCGTCGACTGGATCCGGTACCGAGGAGATCTGCC
GCCCGATCGCC

ATGGCAGGGCTATGTTCCAGCCCGTGGGTGAAGCTGCTACTGGCAGTAGTGCTGAGTGCCGGTCTCCCTG
GAAACATGGCCAACCGCTGTAAGAAGGCTCAGGTGAAGAGCTGTACGGAGTGCATCCGAGTGGACAAGAG
CTGTGCCACTGCACAGACGAGCTGTTCAAGGAGCGAGCTGCAACACCCAGGCGGACGTTCTGGTGCA
GGCTGCCGGGGAGAGAGCGTGTGGTTCATGGAGAGCAGCCTTGAGATCACAGAGAACATCCAGATTGACA
CCAGCCTGCACCCGAGCCAGGTATCTCCCAAGGCCTGCAAGTGCGGCTGCGGCCGGGTGAGGAGCGCAA
CTTTGTGTTCAAGGTGTTTGGCCCTGGAGAGCCCGTGGATCTGTATATCCTCATGGACTTTTCCAAC
TCCATGTCTGATGATCTGGACAACCTCAAGCAGATGGGGCAGAACCTGGCCAAGATCCTGCGCCAGCTCA
CCAGTGACTACACTATTGGATTCGAAAGTTTGTGGACAAAGTCAGTGTCCCTCAGACGGACATGAGGCC
CGAGAAGCTGAAGGAGCCGTGGCCCAACAGCGACCCCCATTCTCCTTCAAGAAATGTTATCAGCTTAACA
GAGAATGTGGAAGAATTCTGGGACAACTGCAAGGAGAACGCATCTCAGGCAACCTGGACGCTCCTGAAG
GAGGCTTCGACGCCATCCTGCAGACAGCCGTGTGCACAAGGGACATTGGCTGGAGAGCGGACAGCACCCA
CCTGCTGGTGTCTCCACCGAGTCTGCCTTCCACTATGAGGCTGATGGTGCCAACGTGCTGGCCGGCATC
ATGAACCGCAATGATGAGAAGTGCCACCTGGATGCCACAGGCGCCTACACCCAGTATAAGACCCAGGACT
ACCCATCTGTGCCCACTGGTTTCGCTGCTTGCCAAACACAACATTATCCCCATCTTTGCCGTACCAA
CTACTCTTACAGTTACTACGAGAAGCTCCATAAATATTTCCCTGTCTCCTCTCTGGGAGTCTGCAGGAA
GATTATCCAACATCGTGGAGCTGCTGGAGGAGCTTTCTATCGAATTCGCTCCAACCTGGACATCCGGG
CTCTGGACAGCCCGAGAGGCCTGAGGACAGAGGTACCTCCGATACCTCCAGAAGACAGAGACTGGGTC
CTTTCACATCAAGCGGGGGAAGTGGGCACATAACAATGTGCATCTTCGGGAGTGGAGGACATAGATGGG
ACACAGCTGTGCCAGCTGGCCAAAGAAGACCAAGAGGTAACATCCACCTGAAACCCTCCCTCTCCGATG
GCCTCCGGATGGACGCGAGCGTCACTGTGACATGTGCGCTGCGAGCTGCAAAAAGGAAGTTTCAGTCAGC
TCGCTGTCACTACAGAGGAGACTTCATGTGTGGACACTGTGTGTGCAACGAGGGCTGGAGTGGCAAAC
TGCAATTGCTCCACGGTTCCCTGAGTGACACGACGCCCTGCCTGCGTGAGGGTGGAGACAAACCATGCT
CGGGCCATGGCGAGTGCCAGTGCAGGACGTTGTGTGTGCTACGGTGAAGGCCGCTACGAGGTCACCTCTG
CGAGTATGACAACTTCAGTGTCCCGCACCTCTGGATTCTTTGCAATGACCGGGACGCTGCTCCATG



[View online »](#)

GGAGAGTGTGTGTGTGAGCCTGGTTGGACCGGCCGACGCTGTGACTGTCCCCTCAGCAATGCCACCTGTA
 TCGATAGCAATGGGGGCATCTGCAATGGACTAGGCTTCTGTGAGTGTGGCCGTTGTCACTGCAACCAGCG
 GTCTTCGCTCTACACGGACACCCTGTGAGATCAACTACTCGGCGATACGCCTGGGCTCTGTGAGGAC
 CTCCGCTCCTGTGTACAGTGCCAGGCTGGGGCACTGGGAGAAAGAAAGGGCGCACGTGTGAGGAATGCA
 ACTTTAAGGTCAAGATGGTAGACGAGCTTAAGAAAGCGGAAGAGGTGGTGGAGTACTGCTCCTCCGGGA
 CGAGGATGACGACTGCACTTACAGCTACACCCTGGAGGGCGACGGCAGCCCTGGGCCCCAACAGCACCGTC
 CTGGTCCACAAGAAGAAGACTGCCTCCCGCTCCTTCTGGTGGCTCATTCCCCTGCTCATCTTCCCTCC
 TGTGCTCCTGGTGTGCTTCTGCTGCTGCTGCTGAAATACTGTGCCTGCTGCAAAGCCTGCCTGGGACT
 TCTTCTGTGCAACCAAGGTCACATGGTGGGCTTTAAGGAAGTCACTATATGCTGCGGGAGAACCTG
 ATGGCCTCTGACCACCTGGACACGCCATGCTGAGAAGTGGGAACCTCAAGGGACGAGACACAGTCCGCT
 GGAAGATCACCACAATGTGCAACGGCCTGGCTTGGCACCCATGCTGCCAGCATCAGCCCCACAGAGCT
 CGTACCCTATGGGCTATCCCTGCGCTTGGCCGCTCTGCACTGAGAACCTCATGAAGCCTGGCACCCGA
 GAGTGTGACCAGTACGCCAGGAGGTGGAGGAAAATCTGAATGAGGTATACAGACAAGTCAACGGCGTAC
 ACAAGCTCCAGCAGACGAAGTCCGACAGCAACCCAACGCTGGGAAAAAGCAAGACCACACCATTGTGGA
 CACAGTGTGCTGGCGCCCGCTCTGCCAAGCAGTCTGCTGAAGCTGACAGAGAAGCAGTGGAGCAG
 GGGTCTTCCATGAAGTCAAGGTGGCCCTGGTACTACACCCTCACAGCAGAGCAGGATGCCCGGGCA
 TGGTGGAGTCCAGGAGGGGTAGAGCTGGTGGACGTGCGTGTGCCCTTTCATCCGGCCTGAGGATGA
 TGATGAGAAACAGCTGCTGGTGGAGGCCATTGATGTCCCCTGGGCACTGCCACCCTTGGTGCAGCCTG
 GTAACATCACCATCATTAAAGGAGCAAGCTAGCGGGATAGTGTCTTTGAGCAGCCTGAATACTCAGTGA
 GTCGTGGAGACCAGGTGGCCCGCATCCCTGTATCCGGCACATCTGGACAACGGCAAGTCCCAGGTCTC
 CTATAGCACACAGGATAATACAGCAGTGGACACCGGGATTATGTCCCTGTGGAAGGGGAGCTGTGTTT
 TACCCCGGAGAGACCTGGAAGGAACTGCAGGTGAAGCTCCTGGAGCTGCAGGAAGTGCAGTCCCTCCTT
 GTGGCCCGCAGGTCCGACGCTTCAAGTCAACTCAGCAACCCCAAGTTTGGAGCCCGCTGGGCCAGCC
 CAACACAGCCACTGTTATCATCGGGGAACAAGATGAAACGGACAGAAAGTCTATAAATGAGATATCCGCA
 TCGCCGCACTACCCCGTGGAGACCTGGGTGCCCGCAGAACCCCAATGCCAAGGCTGCCGATCCAGGA
 AGATCCATTTCAACTGGCTGCCCTCCTGGCAAGCCAATGGGGTATAGGGTAAAATACTGGGTCCAGGG
 CGACTCTGAGTCCGAAGCCACCTGCTGGACAGCAAGGTGCCCTCAGTGGAGCTACCAACCTGTATCCC
 TATTGCGACTACGAAATGAAGGTGTGCGCTACGGGGCACACGGGGAGGGGCCCTATAGCTCACTGGTGT
 CCTGCCGACCCACCAGGAAGTGCCAGTGAAGCCAGGAAGGCTGGCTTTCATGTAGTTCCTTCTACGGT
 GACCCAGCTGAGCTGGGAGAACAGCTGAAACCAACGGGGAGATCACAGCCTATGAGGTCTGCTATGGA
 CTGGTCAACGAGGACAACCGACCAATTGGACCTATGAAGAAGGTGCTTGTGGACAACCCCAAGAACCGGA
 TGCTGCTCATTGAGAATCTTCGAGAGTCCAGCCATACCGATACAGGTTGAAGGCCGCAACGGGGCAGG
 ATGGGGACCCGAGAGAGAGGCTATCATCAACTGGCCACACAGCCCAAGCGGCCATGTCCATTCCTATC
 ATCCCAGACATCCCCATAGTGGACGCCAGGGTGGAGAAGACTACGAAAACCTTCTCATGTACAGTGACG
 ACGTTCTGCGCTCCCAGCCAGCAGCCAGAGGCCAGCGTTTCAGATGACACTGAGCACCTGGTGAATGG
 CCGGATGGACTTTGCCTATCCAGGCAGTGCCAACTCCCTGCATAGGATGACTGCTGCCAACGTGGCTAT
 GGCACACATCTAAGCCCACACCAGACCCACCGAATGCTGAGCACGTCTTACCCCTACCCGGGACTACC
 ACTCTGACGCGCACAGACCACTCTCAGTCAGGCACACTTCCCAGGACTACTCCACTCACTTCCCT
 TTCTCCCAAGGCCTCCCTCCTATCTGGGAAGATGGGAGGAGCAGGCTTCCGCTGCTCTGGACCTTGGG
 TCCTGGAGCCGGGCTCAGATGAAGGGTGTGCCCGCATCCAGGGGCTACCAGACTATAATCCTGGCCG
 GGCAGTACGACGCGCCCTCCTGGGTACAGATTCCCCTGGGGCTATGGGTGTGCCCGACACACCCACTCG
 GCTGGTGTCTCCGCCCTGGGGCCACATCTCTGAAGGTGAGCTGGCAGGAGCCACAGTGTGATCGAGCA
 CTGCTGGGCTACAGCTGGAATACCAGCTACTCAACGGCGGCGAGATGCATCGGCTCAACATCCCTAACC
 CTGGCCAAACCTCTGTGGTGGTAGAGGATCTCCTGCCTAACCACTCCTATGTGTTCCGGGTACGGGCACA
 AAGCCAGGAGGGCTGGGGCCGGGAGCGAGAGGGTGTATACCATCGAGTCCCAGGTGCACCCGAGAGC
 CCTCTCTGCCCTGCCAGGCTCCGCTTACCTTGAACCCCCAGCGCCCAGGCCCTGGTGTTC
 CTGCCCTAAGCCCAGACTCTCTGACGTGAGCTGGGAGCGCCCAAGAAGGCCAACGGAGATATCCTTGG
 CTACCTGGTACCTGTGAGATGGCCAAGGAGGAGGACCAGCCAGAACCTTCCGGGTGGATGGGGACAAC
 CCTGAGAGCCGGCTGACGGTTCCTGGCCTCAGTGAAGCTTCTTACAAGTTCAAGGTGCAGGCCCGGA
 CAACAGAGGGCTTTGGGCCGAGCGTGAGGGTATCATCACCATCGAGTCTCAGGATGGAGGCCCTTCCC
 ACAGCTGGGCAGCCATTCTGGGCTTTCCAGAACCCTGCAAAGTGAGTACAGCACTGTACCAGCACT
 CACAGCACTACCACCACCAGCCCTTCTTATAGATGGACTAACCTGGGGACCCAGCGCTGGAAGCAG

GGGGCTCCCTCACCCGGCATGTGACCCAGGAATTTGTGAGCCGGACCCTGACCACCAAGTGGCTCTCTCAG
CACTCATATGGACCAACAGTTCTTCCAACC

ACGCGTACGCGGCCGCTCGAGCAGAACTCATCTCAGAAGAGGATCTGGCAGCAATGATATCCTGGATT
ACAAGGATGACGACGATAAGGTTTAA

Protein Sequence:

>RR203661 representing NM_013180
Red=Cloning site Green=Tags(s)

MAGLCSSPWVKKLLAVVLSAGLPGNMANRCKKAQVKSCTECIRVDKSCAYCTDELKERRCNTQADVLAA
GCRGESVLVMESSLEITENIQIDTSLHRSQVSPQGLQVRLRPGEERNFVKVFEPLVSPVDLYILMDFSN
SMSDDLNLKQMGQNLAKILRQLTSDYTIIGFGKFDKVSVPQTDMRPEKLKEPWPNSDPPFSFKNVISLT
ENVEEFWDKLQGERISGNLDAPEGGFDAILQTAVCTRDIGWRADSTHLLVFSTESAFHYEADGANVLAGI
MNRNDEKCHLDATGAYTQYKTQDYPSVPTLVRLAKHNIPIFAVTNYSYSYIEKHLKHYFPVSSLGVLQE
DSSNIVELLEAFYRIRSNLDIRALDSPRGLRTEVTSDTLQKTEGTFHFKRGEVGTYNVHLRAVEDIDG
THVQCLAKEDQRGNIHLKPSFSDGLRMDASVICMCACELQKEVQSARCHYRGDFMCGHCVCNEGWSGKT
CNCSTGSLSDTQPCLREGEDKPCSGHGECQCGRCVYGEGRYEGHFCEYDNFQCPRTSGFLCNDGRGCSM
GECVCEPGWTGRSCDCPLSNATCIDSNGGICNGLGFCECGRCHCNQRSSLYDTTCEINYSAIRLGLCED
LRSCVQCQAWGTGEKKGRTCEECNFKVMVDELKKAEEVVEYCSFRDEDDCTYSYVEGDGSPGNSTV
LVHKKKDCPLPAPSWWLIPLLIIFLLLLLVLLLLLWVKYCACCKACLGLLPCCNQGHMVGFEDHYMLRENL
MASDHLDTPLMRSGNLKGRDTRWKITNNVQRPGFATHAASISPTLVYGLSLRLGRLCTENLMPGTR
ECDQLRQEVEENLNEVYRQVNGVHKLQQTFRQPNAGKKQDHTIVDTVLLAPRSKQSLKLTEKQVEQ
GSFHELKVAPGYTLTAEQDARGMVEFQEGVELVDVVRVPLFIRPEDDDEKQLLVEAIDVPVGTATLGRRL
VNITIIKEQASGIVSFEQPEYSVSRGDQVARIPVIRHILDNGKSQVSYSTQDNTAHGHRDYVPVEGELLF
YPGETWKEQLQVKKLELQEVDSLLRGRQVRRFQVQLSNPKFGARLQPNATVVIIEQDETDRLINEISA
SPPLPRGDLGAPQNPNAKAAGSRKIHFNWLPKPMGYRVKYVWQGDSESEAHLLDSKVPVELTNLYP
YCDYEMKVCAYGAGHGEPPYSSLVSCRTHQEVSEPGRLAFNVVSTVTQLSWAEPATNGEITAYEVCYG
LVNEDNRPIGPMKKVLVDNPKNRMLLIENLRESQPYRYTVKARNGAGWGPAREAIIINLATQPKRPMIPI
IPDIPIVDAQGGEDYENFLMYSDDVLRSPASSQRPVSVDDTEHLVNGRMDFAYPGSANSLHRMTAANVAY
GTHLSPHQTHRMLSTSTLTRDYHSLTRTDHSQSGTLPRDYSTLTSLSQGLPPIWEDGRSRLPLSWTLG
SWSRAQMKGVPASRGSPDSIILAGQSAAPSWGTDSTRGAMGVPDTPTRLVFSALGPTSLKVSQWQEPQCDRA
LLGYSVEYQLLNGGEMHRLNIPNPGQTSVVVEDLLPNHSYVFRVRAQSQEGWGREREGVITIEESQVHPQS
PLCPLPGSAFTLSTPSAPGPLVFTALSPDSLQLSWERPRRPNGDILGYLVTCEMAQGGGPARTFRVDGDN
PESRLTVPGLENVYPYKFKVQARTTEGFPEREIIITIESQDGGPFPQLGSHSGLFQNPQLQSEYSTVTST
HSTTTTEPFLIDGLTLGTQRLEAGGSLTRHVTQEFVSRTLTTSGSLSTHMDQQFFQT

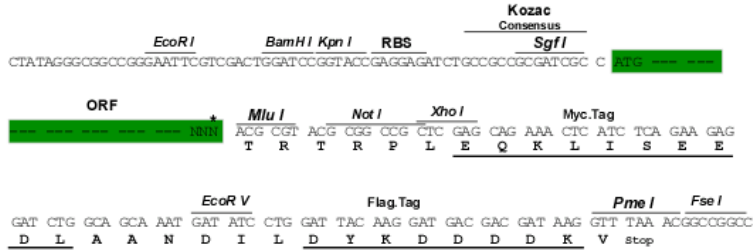
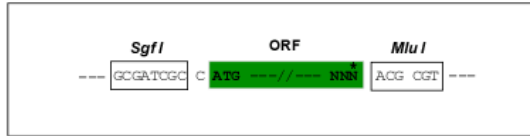
TRTRPLEQKLI SEEDLAANDILDYKDDDDKV

Restriction Sites:

Sgfl-MluI

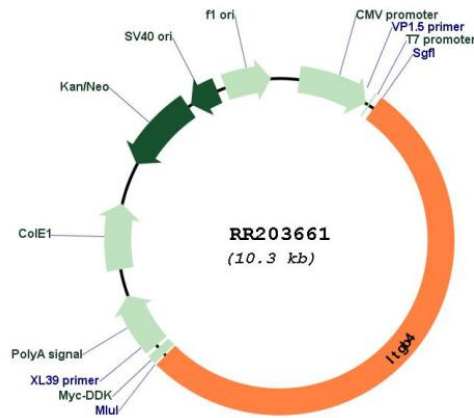
Cloning Scheme:

Cloning sites used for ORF Shuttling:



* The last codon before the Stop codon of the ORF

Plasmid Map:



ACCN:	NM_013180
ORF Size:	5421 bp
OTI Disclaimer:	The molecular sequence of this clone aligns with the gene accession number as a point of reference only. However, individual transcript sequences of the same gene can differ through naturally occurring variations (e.g. polymorphisms), each with its own valid existence. This clone is substantially in agreement with the reference, but a complete review of all prevailing variants is recommended prior to use. More info
OTI Annotation:	This clone was engineered to express the complete ORF with an expression tag. Expression varies depending on the nature of the gene.
Components:	The ORF clone is ion-exchange column purified and shipped in a 2D barcoded Matrix tube containing 10ug of transfection-ready, dried plasmid DNA (reconstitute with 100 ul of water).
Reconstitution Method:	<ol style="list-style-type: none">1. Centrifuge at 5,000xg for 5min.2. Carefully open the tube and add 100ul of sterile water to dissolve the DNA.3. Close the tube and incubate for 10 minutes at room temperature.4. Briefly vortex the tube and then do a quick spin (less than 5000xg) to concentrate the liquid at the bottom.5. Store the suspended plasmid at -20°C. The DNA is stable for at least one year from date of shipping when stored at -20°C.
RefSeq:	NM_013180.1 , NP_037312.1
RefSeq Size:	5896 bp
RefSeq ORF:	5424 bp
Locus ID:	25724
UniProt ID:	Q64632
Cytogenetics:	10q32.1
MW:	200.6 kDa
Gene Summary:	beta subunit of integrin alpha6/beta4 which is a cell surface receptor for laminin; involved in hemidesmosome formation [RGD, Feb 2006]