

Product datasheet for **RR203659**

Ubb (NM_138895) Rat Tagged ORF Clone

Product data:

Product Type: Expression Plasmids
 Product Name: Ubb (NM_138895) Rat Tagged ORF Clone
 Tag: Myc-DDK
 Symbol: Ubb
 Synonyms: UBC
 Mammalian Cell Selection: Neomycin
 Vector: pCMV6-Entry (PS100001)
 E. coli Selection: Kanamycin (25 ug/mL)
 ORF Nucleotide Sequence: >RR203659 representing NM_138895
 Red=Cloning site Blue=ORF Green=Tags(s)

TTTTGTAATACGACTCACTATAGGGCGCCGGGAATTCGTCGACTGGATCCGGTACCGAGGAGATCTGCC
 GCC**CGATCGCC**

ATGCAAACTCTTCGTGAAGACCCTGACCGGCAAGACCATCACCTAGAGGTGGAGCCCAGTGACACCATCG
 AGAACGTGAAGGCCAAGATCCAGGATAAAGAGGGCATCCCCCTGACCAGCAGAGGCTCATCTTTGCCGG
 CAAGCAGCTGGAAGATGGCCGACCCCTCTGACTACAACATCCAGAAAGAGTCAACCCTGCACCTGGTC
 CTCCGCCTGAGGGCGGCATGCAGATCTTCGTGAAGACCCTGACCGTCAAGACCATCACCTGGAGGTGG
 AGCCCAGTGACACCATCGAGAACGTGAAGGCCAAGATCCAGGATAAAGAGGGCATCCCCCTGACCAGCA
 GAGGCTCATCTTTGCCGGCAAGCAGCTGGAAGATGGCCGACCCCTCTGATTACAACATCCAGAAAGAG
 TCAACCCTGCACCTTGTCTCCGCCTGAGGGCGGCATGCAGATCTTCGTGAAGACCCTGACCGGCAAGA
 CCATCACCTAGAGGTGGAGCCCAGTGACACCATCGAGAACGTGAAGGCCAAGATCCAGGATAAAGAGGG
 CATCCCCCTGACCAGCAGAGGCTCATCTTTGCCGGCAAGCAGCTGGAAGATGGCCGACCCCTCTGAC
 TACAACATCCAGAAAGAGTCAACCCTGCACCTGGTCTCCGCCTGAGGGCGGCATGCAGATCTTCGTGA
 AGACCCTGACCGGCAAGACCATCACCTGGAGGTGGAGCCCAGTGACACCATCGAGAACGTGAAGGCCAA
 GATCCAGGATAAAGAGGGCATCCCCCTGACCAGCAGAGGCTCATCTTTGCCGGCAAGCAGCTGGAAGAT
 GGCCGCACCCCTCTGATTACAACATCCAGAAAGAGTCAACCCTGCACCTGGTCTCCGCCTGAGGGGTG
 GCTAT

ACGCGTACGCGGCCGCTCGAGCAGAAACTCATCTCAGAAGAGGATCTGGCAGCAAATGATATCCTGGATT
 ACAAGGATGACGACGATAAGGTTTAA



[View online »](#)

Protein Sequence: >RR203659 representing NM_138895
 Red=Cloning site Green=Tags(s)

```

MQIFVKTLTGKTITLEVEPSDTIENVKAKIQDKEGIPPDQQR LIFAGKQLEDGRTLSDYNIQKESTLHLV
LRLRGGMQIFVKLT LTKITILEVEPSDTIENVKAKIQDKEGIPPDQQR LIFAGKQLEDGRTLSDYNIQKE
STLHLVLRRLRGGMQIFVKLT LTKITILEVEPSDTIENVKAKIQDKEGIPPDQQR LIFAGKQLEDGRTLSD
YNIQKESTLHLVLRRLRGGMQIFVKLT LTKITILEVEPSDTIENVKAKIQDKEGIPPDQQR LIFAGKQLED
GRTLSDYNIQKESTLHLVLRRLGGY
  
```

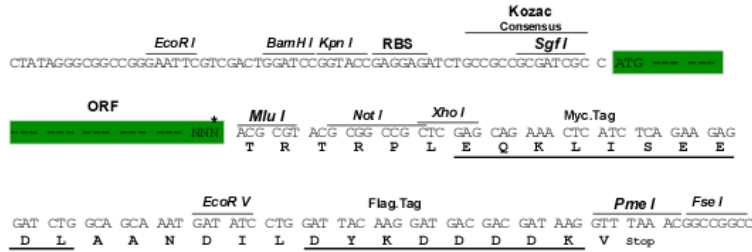
TRTRPLEQKLISEEDLAANDILDYKDDDDKV

Restriction Sites:

Sgfl-MluI

Cloning Scheme:

Cloning sites used for ORF Shutting:



* The last codon before the Stop codon of the ORF

ACCN: NM_138895

ORF Size: 915 bp

OTI Disclaimer: The molecular sequence of this clone aligns with the gene accession number as a point of reference only. However, individual transcript sequences of the same gene can differ through naturally occurring variations (e.g. polymorphisms), each with its own valid existence. This clone is substantially in agreement with the reference, but a complete review of all prevailing variants is recommended prior to use. [More info](#)

OTI Annotation: This clone was engineered to express the complete ORF with an expression tag. Expression varies depending on the nature of the gene.

Components: The ORF clone is ion-exchange column purified and shipped in a 2D barcoded Matrix tube containing 10ug of transfection-ready, dried plasmid DNA (reconstitute with 100 ul of water).

Reconstitution Method:

1. Centrifuge at 5,000xg for 5min.
2. Carefully open the tube and add 100ul of sterile water to dissolve the DNA.
3. Close the tube and incubate for 10 minutes at room temperature.
4. Briefly vortex the tube and then do a quick spin (less than 5000xg) to concentrate the liquid at the bottom.
5. Store the suspended plasmid at -20°C. The DNA is stable for at least one year from date of shipping when stored at -20°C.

RefSeq: [NM_138895.2](#), [NP_620250.2](#)

RefSeq Size: 1191 bp

RefSeq ORF: 918 bp

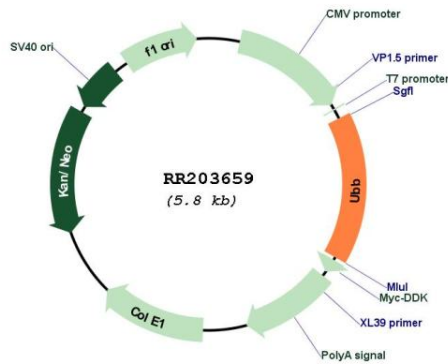
Locus ID: 192255

Cytogenetics: 10q23

MW: 34.4 kDa

Gene Summary: mediates ATP-dependent degradation of denatured proteins [RGD, Feb 2006]

Product images:



Circular map for RR203659