

Product datasheet for **RR203647**

Colq (NM_019274) Rat Tagged ORF Clone

Product data:

Product Type:	Expression Plasmids
Product Name:	Colq (NM_019274) Rat Tagged ORF Clone
Tag:	Myc-DDK
Symbol:	Colq
Vector:	pCMV6-Entry (PS100001)
E. coli Selection:	Kanamycin (25 ug/mL)
Cell Selection:	Neomycin
ORF Nucleotide Sequence:	>RR203647 representing NM_019274 Red=Cloning site Blue=ORF Green=Tags(s)

TTTTGTAATACGACTCACTATAGGGCGGCCGGAATTCGTCGACTGGATCCGGTACCGAGGAGATCTGCC
GCC**CGATCGCC**

ATGGCTGTCTGAATCCAATGACTTTGGGAATTTATCTCCAACCTTTCTTCTGCTCCATCGTGTGCGAGC
CAACTTTTCATCAACAGTGTCTCTCCAATCTCAGCAGCCCTTCTGGCCTGGATCAGAAGAAACGAGGCCAA
CCACAAAGCATGCTGCCTACTGATGCCCGCCACCCCACTCTCCACCAGCCATTCTTCAGAGGCAGC
CGAAGCCCGCTTCTCTCCCAGACATGAAGAATCTTCTGGAACCTGAGGCCTCCCATCACCTGCATGC
AAGGCTCTTAGGCTCTCTGGCCCCCTGGGCCCCAGGGTCCACCTGGGCTTCTGGCAAGGCAGGACC
AAAGGGAGAAAAGGGGGATCTTGGCCGCCAGGAAGGAAGGGTAGACCTGGACCCCAAGGTGTTCTGGC
GAGCCCGGCCGTTGGCTGGCCAGGCCCTGAAGGACCCAGGGGCGAAAAAGGCGACGTGGGTATGATGG
GTCTGCCAGGGTCAAGAGGACCGATGGGCTCTAAGGGCTTCCCTGGATCCAGAGGGGAAAAGGGATCCAG
AGGTGAAAGAGGGGACTTGGGTCCAAAGGAGAAAAGGGTTTCCCTGGATTTCTGGAATGCTGGGGCAG
AAAGGTGAAATGGGTCCAAAGGGAGAATCTGGGATAGCAGGACATCGGGGCCACAGGAAGACCAGGGA
AACGAGGCAAGCAGGGTCAAGAGGAGACAGTGAATTATGGGCCACCAGGCAAACCTGGGCTTCTGG
TCAACCTGGCCGTCAGGTCTCCCGGGCCCCAGGACCCCATCTGCAGGACAACCTGTAATGGGACTC
AAAGGGGAAAGAGGATTTCCAGGGCCCCCGGAAGATGCCTTTGCGGACCCCTGCGAATGTGAATAACC
CCTCCTATGGGGACCCATGTATGGGCGCGGCTCCCTCGAGTTCCTGCGATTTTGTGGTCAACAACCA
GGAGGAGCTTGAGAAGCTGAACACTCAAATGCCATTGCCTTTGGAAGAGACCAGCGATCTCTGTACTTC
AAAGATAGCCTTGGTGGCTCCCATCCAGTAACCCCTTTTACCCAGTGGGTTTACACCATAAAGCAG
CATGGCACCTGTGTGGGATGGGTCCTGCAGCCTGGGGAGGAATGTGACGATGGTAACCCGGATGTGAG
TGACGGCTGCATTGACTGTCATCGGGCTACTGTGGAGACGGTTATCGGCACCGGGCGTGGAGGACTGT
GACGGCTGACTTTGGCTACCTGAAGTGCAGACCTATCTCCCTGGATCATACGGAGAACCTCGGTGCA
CCAGTATTGCTCCATCGACTCCACACCTGCCGATACTTCACG

ACGCGTACGCGGCCGCTCGAGCAGAAACTCATCTCAGAAGAGGATCTGGCAGCAAATGATATCTGGATT
ACAAGGATGACGACGATAAGGTTTAA



[View online »](#)

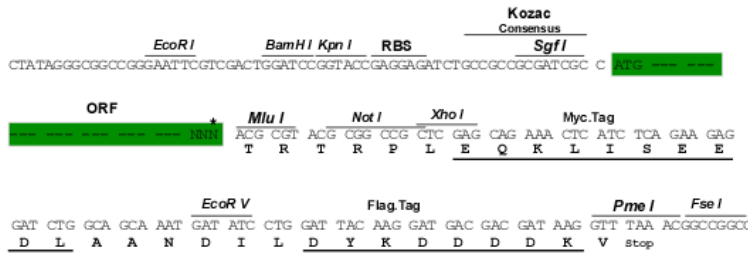
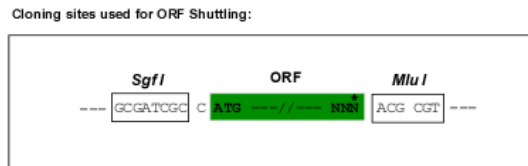
Protein Sequence: >RR203647 representing NM_019274
Red=Cloning site Green=Tags(s)

```
MAVLNPMTLGIYLQLFFCSIVSQPTFINSVLPISAALPLDQKKRGNHKACCLLMPPPPPLFPPPPFRGS
RSPLLSPDMKNLLELEASPSPCMQGSLSGSPGPPGPQPPGLPGKAGPKGEKGDGRGRKGRPGPPGVPG
EPGPVGPWPPEGRGEKGDVGMMLPGRGPMGSKGFPGSRGEKSGRGERDLPKGEKGFPGMLGQ
KGEMGPKGESGIAGHRGPTGRPGKRGKQKQKQKQKQKQKQKQKQKQKQKQKQKQKQKQKQKQKQKQKQKQ
KGERGFPGPPGRCLCGPPANVNNPSYGDPMYGRGSPRVPVPAIFVNNQEELKLNQNAIAFRRDQRSLYF
KDSLGLWLPQIQLTPFYVGLHHKAAWHLCGDVGLQPGEECDGNDVSDGCDCHRAYCGDGYRHRGVEDC
DGSDFGYLKETYLPGSYGELRCTQYCSIDSTPCRYFT
```

TRTRPLEQKLI SEEDLAANDILDYKDDDDKV

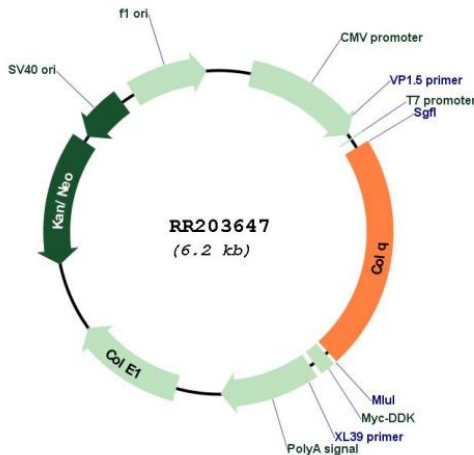
Restriction Sites: SgfI-MluI

Cloning Scheme:



* The last codon before the Stop codon of the ORF

Plasmid Map:



ACCN:	NM_019274
ORF Size:	1374 bp
OTI Disclaimer:	The molecular sequence of this clone aligns with the gene accession number as a point of reference only. However, individual transcript sequences of the same gene can differ through naturally occurring variations (e.g. polymorphisms), each with its own valid existence. This clone is substantially in agreement with the reference, but a complete review of all prevailing variants is recommended prior to use. More info
OTI Annotation:	This clone was engineered to express the complete ORF with an expression tag. Expression varies depending on the nature of the gene.
Components:	The ORF clone is ion-exchange column purified and shipped in a 2D barcoded Matrix tube containing 10ug of transfection-ready, dried plasmid DNA (reconstitute with 100 ul of water).
Reconstitution Method:	<ol style="list-style-type: none">1. Centrifuge at 5,000xg for 5min.2. Carefully open the tube and add 100ul of sterile water to dissolve the DNA.3. Close the tube and incubate for 10 minutes at room temperature.4. Briefly vortex the tube and then do a quick spin (less than 5000xg) to concentrate the liquid at the bottom.5. Store the suspended plasmid at -20°C. The DNA is stable for at least one year from date of shipping when stored at -20°C.
RefSeq:	NM_019274.2 , NP_062147.1
RefSeq Size:	2645 bp
RefSeq ORF:	1377 bp
Locus ID:	29755
UniProt ID:	O35167
Cytogenetics:	16p16
MW:	47.9 kDa
Gene Summary:	binds heparin; links asymmetric acetylcholinesterase to the basal lamina of the neuromuscular junction [RGD, Feb 2006]