

Product datasheet for **RR203620**

Nppc (NM_053750) Rat Tagged ORF Clone

Product data:

Product Type: Expression Plasmids
Product Name: Nppc (NM_053750) Rat Tagged ORF Clone
Tag: Myc-DDK
Symbol: Nppc
Mammalian Cell Selection: Neomycin
Vector: pCMV6-Entry (PS100001)
E. coli Selection: Kanamycin (25 ug/mL)
ORF Nucleotide Sequence: >RR203620 representing NM_053750
Red=Cloning site Blue=ORF Green=Tags(s)

TTTTGTAATACGACTCACTATAGGGCGGCCGGAATTCGTCGACTGGATCCGGTACCGAGGAGATCTGCC
GCC**CGATCGCC**

ATGCACCTCTCCAGCTGATCGCCTGTGCCCTGCTGCTCGCGCTACTCTCACTCCGGCCCTCCGAAGCCA
AGCCCGGGACACCACCGAAGGTCCCGAGAACCCTGCCAGGGGAGGAGCTGGCAGAGCCCCAGGCAGCTGG
TGGCAATCAGAAAAGGGTGACAAGACTCCAGGCGGGGGGAGCCAATCTCAAGGGAGACCGATCGCGA
CTGCTTCGGGACCTGCGTGTGGACCAAGTCCCGGGCGGCGTGGGCTCGCCTTCTGCACGAGACCCCA
ACGCGCGCAAATACAAAGGCGGCAACAAGAAGGGCTTGTCAAAGGCTGCTTTGGCCTCAAGCTGGACCG
GATCGGCTCCATGAGCGGTCTGGGATGT

ACGCGTACGCGGCCGCTCGAGCAGAACTCATCTCAGAAGAGGATCTGGCAGCAAATGATATCCTGGATT
ACAAGGATGACGACGATAAGGTTAA

Protein Sequence: >RR203620 representing NM_053750
Red=Cloning site Green=Tags(s)

MHLSQLIACALLLALLSLRPSEAKPGTPPKVPRTPPGEELAEPQAAGGNQKKGDKTPGGGANLKGDRSR
LLRDLRVDTKSRAAWARLLHEHPNARKYKGGNKKGLSKGCFGLKLDRIGSMSGLGC

TRTRPLEQKLISEEDLAANDILDYKDDDDKV

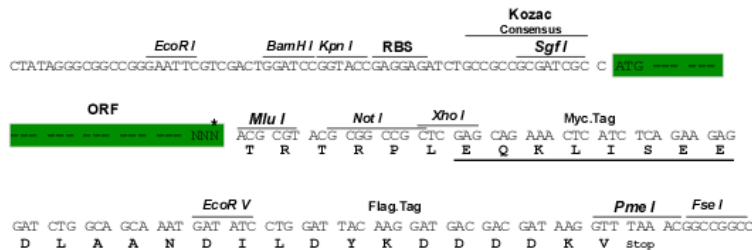
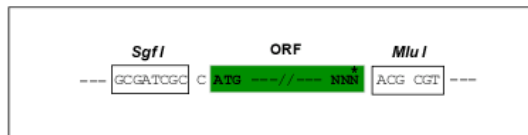
Restriction Sites: SgfI-MluI



[View online »](#)

Cloning Scheme:

Cloning sites used for ORF Shuttling:



* The last codon before the Stop codon of the ORF

ACCN: NM_053750

ORF Size: 378 bp

OTI Disclaimer: The molecular sequence of this clone aligns with the gene accession number as a point of reference only. However, individual transcript sequences of the same gene can differ through naturally occurring variations (e.g. polymorphisms), each with its own valid existence. This clone is substantially in agreement with the reference, but a complete review of all prevailing variants is recommended prior to use. [More info](#)

OTI Annotation: This clone was engineered to express the complete ORF with an expression tag. Expression varies depending on the nature of the gene.

Components: The ORF clone is ion-exchange column purified and shipped in a 2D barcoded Matrix tube containing 10ug of transfection-ready, dried plasmid DNA (reconstitute with 100 ul of water).

Reconstitution Method:

1. Centrifuge at 5,000xg for 5min.
2. Carefully open the tube and add 100ul of sterile water to dissolve the DNA.
3. Close the tube and incubate for 10 minutes at room temperature.
4. Briefly vortex the tube and then do a quick spin (less than 5000xg) to concentrate the liquid at the bottom.
5. Store the suspended plasmid at -20°C. The DNA is stable for at least one year from date of shipping when stored at -20°C.

RefSeq: [NM_053750.1](#), [NP_446202.1](#)

RefSeq Size: 1020 bp

RefSeq ORF: 381 bp

Locus ID: 114593

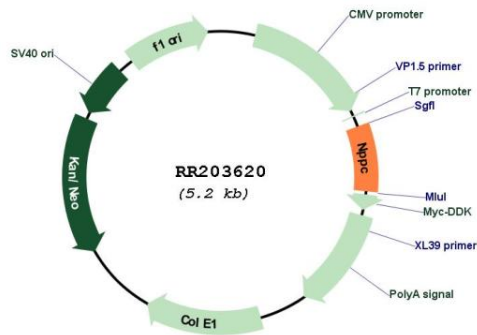
UniProt ID: [P55207](#)

Cytogenetics: 9q35

MW: 13.3 kDa

Gene Summary: binds natriuretic peptide receptor; involved in inhibition of growth and proliferation in vascular smooth muscle cells [RGD, Feb 2006]

Product images:



Circular map for RR203620