

Product datasheet for **RR203548**

Nipa2 (NM_001107518) Rat Tagged ORF Clone

Product data:

Product Type: Expression Plasmids
Product Name: Nipa2 (NM_001107518) Rat Tagged ORF Clone
Tag: Myc-DDK
Symbol: Nipa2
Synonyms: RGD1306051; SLC56A2
Vector: pCMV6-Entry (PS100001)
E. coli Selection: Kanamycin (25 ug/mL)
Cell Selection: Neomycin
ORF Nucleotide Sequence: >RR203548 representing NM_001107518
Red=Cloning site Blue=ORF Green=Tags(s)

TTTTGTAATACGACTCACTATAGGGCGCCGGAATTCGTCGACTGGATCCGGTACCGAGGAGATCTGCC
GCC**CGGATCGCC**

ATGAGCCTGGGGCGTGGAAAATGACTTTTATATTGGTCTTGGATTGGCTATGACCTCCAGCATTTTCA
TTGGAGGGAGTTTCATTTTAAAAAAAAGGCCTTCTGCGACTTGCCAGAAAAGGCTCCATGAGAGCAGG
TCAAGGAGGCCATGCATATCTTAAGGAATGTTATGGTGGCTGGACTGCTGCAATGGGAGCTGGTGAA
GTGGCCAATTTGCTGCATATGCATTTGCTCCGGCCACACTGGTACTCCACTAGGTGCACTCAGCGTCC
TTGTAAGTGCCATTCTGTCTTCACTTCTAAATGAAAGACTTAATCTTCATGGGAAAATTGGGTGTT
ACTAAGTATTCTAGGATCTACAGTTATGGTCATTCATGCTCCAAAGGAAGAGGAGATTGAGACCTTAAAT
GAAATGTCACATAAGTTAGGTGACCCAGGTTTTGGTCTTTGCAACATTTGGTTCATTGTGGCCTTGA
TATTCATCTTTGGTGGGACCTCGACATGGACAGACAAACATCTTGTGTATATAACAATCTGCTCTGT
GATTGGAGCATTTTCAGTCTCCTGCGTGAAGGGTTGGTATCACTATAAAAGAGTTGTTGGCTGGAAAG
CCTGTTCTGCAGCACCCCTCGCTGGATTCTGCTGCTTAGCCTTGGTCTGTGTGAGCACACAAATTA
ATTACCTAAACCGGGCTCTGGACATTTCAACACTTCCATTGTGACTCCAATATATTATGTTCTTTAC
AACTTCAGTTTTGACGTGTTGAGCTATTCTTTTTAAAGAATGGCAAGATATGCCTGTTGATGATGTCATT
GGGACCTTGAGTGCTTCTTCACAATCATTGTGGGATATTTTTGTTGCATGCCTTTAAAGATGTGAGTT
TTAGTCTAGCAAGTCTGCCTGTAACCTTTTGGAAAAGATGAAAAGGCAGTGAATGGCAATCTTTCTAATAT
GTATGAAGTTCTTAATAATAATGAAGAAGACTTACCATGTGGGATTGAACACACTGGTAAAAATATCTCC
CGTAGAAATGAAATCTGACATCTTTT

ACGCGTACGCGGCCGCTCGAGCAGAACTCATCTCAGAAGAGGATCTGGCAGCAATGATATCCTGGATT
ACAAGGATGACGACGATAAGGTTTAA



[View online »](#)

Protein Sequence: >RR203548 representing NM_001107518
 Red=Cloning site Green=Tags(s)

MSLGRGKYDFYIGLGLAMTSSIFIGGSFILKKKGLRLARKGSMRAGQGGHAYLKEWLWWAGLLSMGAGE
 VANFAAYAFAPATLVPTL GALSVLVSAILSSYFLNERLNLHGKIGCLLSILGSTVMVIHAPKEEEIETLN
 EMSHKLGDPGFVVFATFVVIVALIFIFVVGPRHGQTNILVYITICSVIGAFSVSCVKGLGITIKELLAGK
 PVLQHP LAWILLLSLVVCVSTQINYLNRALDIFNTSIVTPIYYVFFTTSVLTC SAILFKEWQDMPVDDVI
 GTLSGFFTIIIVGIFLLHAFKDVFSFLASLPVTFRKDEKAVNGNLSNMYEVLNNNEEDLPCGIEHTGENIS
 RRNGNLTSF

TRTRPLEQKLISEEDLAANDILDYKDDDDKV

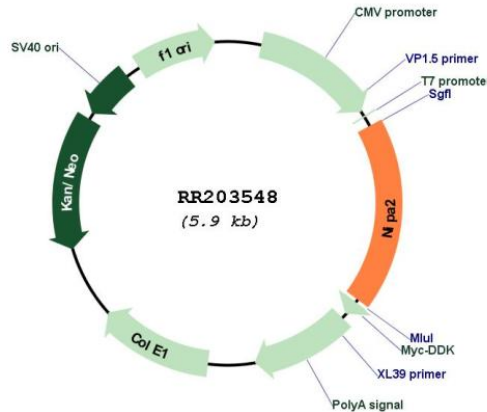
Restriction Sites:

SgfI-MluI

Cloning Scheme:



Plasmid Map:



ACCN: NM_001107518

ORF Size:	1077 bp
OTI Disclaimer:	The molecular sequence of this clone aligns with the gene accession number as a point of reference only. However, individual transcript sequences of the same gene can differ through naturally occurring variations (e.g. polymorphisms), each with its own valid existence. This clone is substantially in agreement with the reference, but a complete review of all prevailing variants is recommended prior to use. More info
OTI Annotation:	This clone was engineered to express the complete ORF with an expression tag. Expression varies depending on the nature of the gene.
Components:	The ORF clone is ion-exchange column purified and shipped in a 2D barcoded Matrix tube containing 10ug of transfection-ready, dried plasmid DNA (reconstitute with 100 ul of water).
Reconstitution Method:	<ol style="list-style-type: none">1. Centrifuge at 5,000xg for 5min.2. Carefully open the tube and add 100ul of sterile water to dissolve the DNA.3. Close the tube and incubate for 10 minutes at room temperature.4. Briefly vortex the tube and then do a quick spin (less than 5000xg) to concentrate the liquid at the bottom.5. Store the suspended plasmid at -20°C. The DNA is stable for at least one year from date of shipping when stored at -20°C.
RefSeq:	NM_001107518.1 , NP_001100988.1
RefSeq Size:	2860 bp
RefSeq ORF:	1080 bp
Locus ID:	308667
Cytogenetics:	1q22
MW:	39.1 kDa