

## Product datasheet for **RR203490**

### Agap3 (NM\_001108616) Rat Tagged ORF Clone

#### Product data:

Product Type:	Expression Plasmids
Product Name:	Agap3 (NM_001108616) Rat Tagged ORF Clone
Tag:	Myc-DDK
Symbol:	Agap3
Synonyms:	Centg3
Vector:	pCMV6-Entry (PS100001)
E. coli Selection:	Kanamycin (25 ug/mL)
Cell Selection:	Neomycin



[View online »](#)

**ORF Nucleotide Sequence:**

>RR203490 representing NM\_001108616  
 Red=Cloning site Blue=ORF Green=Tags(s)

TTTTGTAATACGACTCACTATAGGGCGGCCGGAATTCGTCGACTGGATCCGGTACCGAGGAGATCTGCC  
 GCC**CGGATCGCC**

ATGGTGCCGTGTTCTCGAAAAGGTGCTGACCCGGACAGGGAGAAGAAAGCTGCGGAGTGTAAAGTGACAG  
 GCATTGGGAGCGCCGGCCATCCCTATCAAGCAGGGATCCTGCTGAAAAGGAGCGCAATCCTTGAA  
 CAAGGAGTGAAAAAGAAGTATGTGACACTGTGTGACAACGGGCTGCTTACTTACCACCCAGCCTGCAC  
 GATTACATGCAGAACATCCACGGCAAAGAGATCGACCTCCTGCGGACCACAGTCAAAGTGCCAGGGAAGC  
 GCCTGCCCGAGCCACTCCCTCCACAGCTCCGGGCACCAAGTCCCGTGGTCCCAACGGGTGGCCCTGGA  
 GCGGAGTAACACACAGCTGGGTGGTACCACAGGTGCCCCACTCGGCCAGCAGTGCATCCCTGCATTCT  
 GAGCGCCTCACCCTCAGCCTGGGCTGGCTCACGCCCTGAGGGGTTGCACCAGCGCTCCTGTTCCATTT  
 CCAGCACTGACCAGTGGAGTGGCGAGCTGCCCTGCCAGCGTGCAGCGTCTGCCAGTGGCCAGC  
 TGAGTTACTCAGTCCAGCCCCAAGCTGGAGCCTCCCCATCTCCCCGCTCCAACCGGAAGAAGCAGCGC  
 CGGAAAAAGAGCACCGGGACCCCAAGACAGATGGCCCCAACAGTGTGCTGAAGAGACAGAGGAGTCTCT  
 TTGAATTTGTTGGTGTCCCTCACTGGTCCAGACTGGCACTTCGAGGCCTCAACAGCGGAAGAGCGGGA  
 GCTGTGGGTGCAGAGCGTACAGGCCAAATCCTCGCCAGCCTCCAGGGATGTGCGAGCGCAAGGACAAG  
 ACCCGGCTGGGGAACAGAGCACAGCCCTGGCTGTGACAGTGTCCGACAGCCCGTGGCAATAGCTTCT  
 GTGTTGACTGCGAAGCTCCCAATCCAGACTGGGCCAGCCTGAATCTGGGTGCCCTGATGTGTATCGAGTG  
 TTCAGGGATCCACCGACCTGGGAGCTCACCTGTCCGAGTCCGCTCCCTGGACCTTGATGACTGGCCA  
 CCCGAAGTGTAGCTGTATGACCGCAATGGGCAATGCCTGGCTAACAGTGTCTGGGAGGGGCTCTGG  
 ATGGCTACTCGAAGCCAGGCCAGAAGCTGCAGAGAGGAGAAGGAACCGTGGATCCGGGCCAAGTATGA  
 ACAGAAGCTCTTCTGGCCCCACTGCCGAGCTCGGATGTGCCTCTGGGGCAGCAGTTACTCCGGGCGGTG  
 GTGGAGGATGACCTACGACTGCTGGTGTGCTGCTGGCCATGGGTCCAAGGAGGAGGTGAACGAGACCT  
 ACGGGGATGGCGATGGCAGGACAGCCCTGCACCTGTCCAGTGCATGGCCAACGTCGTTTTACACAGCT  
 GCTCATCTGGTACGGGTGGACGTGAGGAGCCGTGATGCCGAGGCTGACCCCACTGGCCTATGCCCGC  
 CGTGCCCGCAGCCAGGAGTGTGCAGACATCTTGATCCAGCATGGGTGCCCGGGGAGGGCTGTGGTTAG  
 CACCCACTCCCAACAGAGAGCCTGCCAACGGCACCAACCTTCTGCAGAAGTGCACCGCAGCCCTAGTAT  
 CCTA

**ACGCGT**ACGCGGCCGCTCGAGCAGAAACTCATCTCAGAAGAGGATCTGGCAGCAAATGATATCCTGGATT  
 ACAAGGATGACGACGATAAGGTTTAA

**Protein Sequence:**

>RR203490 representing NM\_001108616  
 Red=Cloning site Green=Tags(s)

MVPCSRKGAADPDREKKAIECKVDSIGSGRAIPIKQIGILLKRSKSLNKEWKKKYVTLCDNGLLTYHPSLH  
 DYMQNIHGKEIDLLRTTVKVPGRKLRPRATPSTAPGTSPRGANGLALERSNTQLGGTTGRPHSASSASLHS  
 ERPHRSAWAGSRPEGLHQRSCSISSTDQWSAAAALPASVQRPASGPAELLSSSPKLEPPPSRNRKKQR  
 RKKSTGTPRPDGPNASAAEETESFEFVVVSLTGQTFHFEASTAEERELWVQSVQAQILASLQGCRAKDK  
 TRLGNQSTALAVQTVRTARGNSFCVDCEAPNPDWASNLGALMCIECSGIHRHLGAHLSRVRSLLDDWP  
 PELLAVMTAMGNALANSVWEGALDGYSKPGPEACREEKERWIRAKYEQKLFAPLPSDDVPLGQQLLRV  
 VEDDLRLLVMLLAHGSKEEVNETYGDGDGRTALHLSSAMANVVFQLLIWIYGVDRSRDARGLTPLAYAR  
 RAGSQECADILIQHGCPGEGCGLAPTPNREPANGTNPASIELHRSPSIL

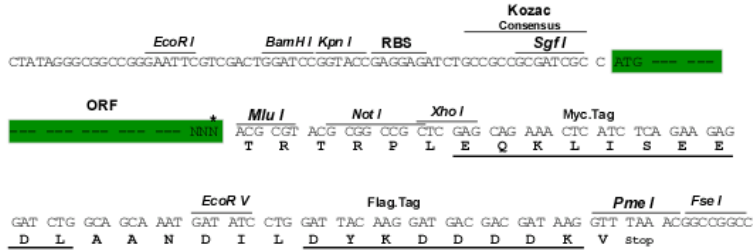
**TR**TRPLEQKLISEEDLAANDILDYKDDDDKV

**Restriction Sites:**

SgfI-MluI

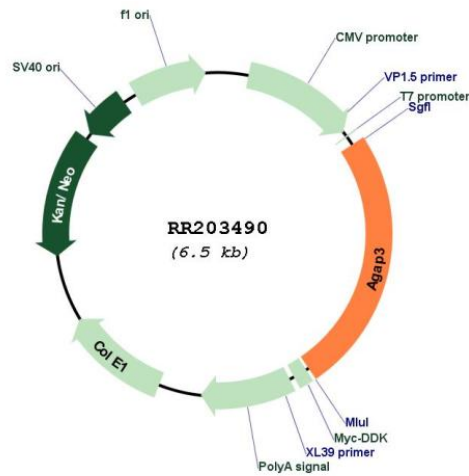
## Cloning Scheme:

Cloning sites used for ORF Shutting:



\* The last codon before the Stop codon of the ORF

## Plasmid Map:



<b>ACCN:</b>	NM_001108616
<b>ORF Size:</b>	1614 bp
<b>OTI Disclaimer:</b>	The molecular sequence of this clone aligns with the gene accession number as a point of reference only. However, individual transcript sequences of the same gene can differ through naturally occurring variations (e.g. polymorphisms), each with its own valid existence. This clone is substantially in agreement with the reference, but a complete review of all prevailing variants is recommended prior to use. <a href="#">More info</a>
<b>OTI Annotation:</b>	This clone was engineered to express the complete ORF with an expression tag. Expression varies depending on the nature of the gene.
<b>Components:</b>	The ORF clone is ion-exchange column purified and shipped in a 2D barcoded Matrix tube containing 10ug of transfection-ready, dried plasmid DNA (reconstitute with 100 ul of water).
<b>Reconstitution Method:</b>	<ol style="list-style-type: none"><li>1. Centrifuge at 5,000xg for 5min.</li><li>2. Carefully open the tube and add 100ul of sterile water to dissolve the DNA.</li><li>3. Close the tube and incubate for 10 minutes at room temperature.</li><li>4. Briefly vortex the tube and then do a quick spin (less than 5000xg) to concentrate the liquid at the bottom.</li><li>5. Store the suspended plasmid at -20°C. The DNA is stable for at least one year from date of shipping when stored at -20°C.</li></ol>
<b>RefSeq:</b>	<a href="#">NM_001108616.1</a> , <a href="#">NP_001102086.1</a>
<b>RefSeq Size:</b>	4337 bp
<b>RefSeq ORF:</b>	1617 bp
<b>Locus ID:</b>	362300
<b>Cytogenetics:</b>	4q11
<b>MW:</b>	58.2 kDa