

Product datasheet for **RR203421**

Hcls1 (NM_001011898) Rat Tagged ORF Clone

Product data:

Product Type:	Expression Plasmids
Product Name:	Hcls1 (NM_001011898) Rat Tagged ORF Clone
Tag:	Myc-DDK
Symbol:	Hcls1
Mammalian Cell Selection:	Neomycin
Vector:	pCMV6-Entry (PS100001)
E. coli Selection:	Kanamycin (25 ug/mL)



[View online »](#)

ORF Nucleotide Sequence:

>RR203421 representing NM_001011898
 Red=Cloning site Blue=ORF Green=Tags(s)

TTTTGTAATACGACTCACTATAGGGCGGCCGGAATTCGTCGACTGGATCCGGTACCGAGGAGATCTGCC
 GCC**CGCATCGCC**

ATGTGGAAGTCTGTAGTGGGCACAATGTATCGGTTTCCGTGGAGACCCAGGGTATGACTGGGACACAG
 ACCCTGACTTTGTGAATGACATCTCTGAGAAGGAACAACGGTGGGGAGCCAAGACCATTGAGGGCTCTGG
 ACGCACAGAGCATATCAACATCCACCAGCTGAGGAACAAAGTGTCCGAGGAGCATGACATTCTCAAGAAG
 AGAGAGCTGGAGTCGGGGCTAAAGCCTCCCATGGCTATGGGGTTCGGTTTGGAGTGAAAGAGACCCGGA
 TGGACAAGAGTCCCGTGGGCCACGAGTATGTTGCTGAAGTGGAGAAACACTCGTCTCAGACTGATGCCGC
 CAAAGGCTTTGGGGCAAATATGGAGTTGAGAGGGACCGGCAGACAAGTCAGCGGTGGGCTTTGACTAC
 AAAGGAGAGGTGGAGAAGCACGCATCTCAGAAAGATTACTCTCATGGCTTTGGTGGCCGCTACGGGGTAG
 AGAAGGATAAACGGGACAAGCAGCTCTGGGATATGACTACAAGGGAGAGACGGAGAAGCAGAGTCTCA
 GCGAGATTATGCCAAGGGCTTTGGTGGTCAATATGGAATCCAGAAAGACAGAGTGGATAAGAGTGTGTT
 GGCTTCAATGAAATGGAGGCCCAACCACGGCATATAAGAAGACAACACCCATAGAAGCTGCTTCCAGTG
 GTGCCCTGGGCTGAAGGCAAAATTCGAGTCCATGGCTGAGGAGAAGAGGAAGCGAGAAGAAGAAGAA
 GGCACAACAGATGGCCAGGCAGCAGCAAGAACGAAAGGCTATGGTGAAGATGAGCCGTGAAGCTCAGCAG
 CCATCCGTGCCTGTGGACGAGCCCGCAGCACCAGCCCCGTTGCCAAGAAGATCTCTCAGAGGTCTGGC
 CTCCAGCAGAGAGTCACTACCACCACAGTCCGAGCCCCGTTGGGAGGCAGAAGAGAATACCCTGTGCCCTC
 CCTGCCACGAGACAGCTCCACCTCAGAATCCCCTCGAGGACAATGAGGAGCCCCAGCTCTGCCCCCT
 AGGACTCCAGAAGGCCTCAGGTGGTGAAGAGCCAGTGTACGAAGCAGCACCCGAGCCCCGAGCCTGAGC
 CCGAGCCTGACTATGAGGATGTTGGAGAGTTAGATCGGCCGGATGAGGAAGCAGAGGGAGACTATGAGGA
 TGTGCTGGAGCCCGAGGACACCCCTTCTCTATCCTACCAGGCTGGACACTCAGCTGGGGCTGGCGGTGCA
 GGGATCTCTGCTGTAGCCCTTTATGATTACCAAGGAGAGGGAAGTGTAGCTGTCTTTGACCCAGATG
 ATGTCATCACTGACATTGAGATGGTTGATGAAGGCTGGTGGCGGGCCGATGTCATGGCCACTTTGGACT
 CTTTCTGCAAACTATGTCAAGCTCCTC

ACGCGTACGCGGCCGCTCGAGCAGAAACTCATCTCAGAAGAGGATCTGGCAGCAAATGATATCCTGGATT
 ACAAGGATGACGACGATAAGGTTTAA

Protein Sequence:

>RR203421 representing NM_001011898
 Red=Cloning site Green=Tags(s)

MWKSIVGHNVSVSVETQGGDWDTPDFVNDISEKEQRWGAKTIEGSGRTEHINIHLRNKVSSEHDILKK
 RELESQPKASHGYGGRFGVERDRMDKSAVGHEVVAEVEKHSSQTDAAKFGGKYGVERDRADKSAVGFY
 KGEVEKHASQKDYSHGFGGRYGVKDKRDKAALGYDYKGETEKHESQRDYAKGFGGQYGIQKDRVDKSAV
 GFNEMEAPTTAYKKTTPIEAASSGARGLKAKFESMAEEKRKREEEKAQQMARQQERKAMVKMSREAQQ
 PSVPVDEPAAPAPLPPKISSEVWPPAESHLPPQSEPVGRRREYPVPSLPTRQPPPQNPLEDNEEPPALPP
 RTPEGLQVVEEPVYEAPEPEPEPEPDYEDVGELEDRPDEAEAGDYEDVLEPEDTPSLSYQAGHSAGAGGA
 GISAVALYDYQGESELSFDPDDVITDIEMVDEGWWRGRCHGHFGLFPANYVKLL

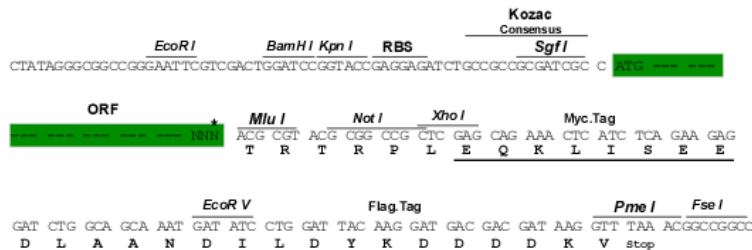
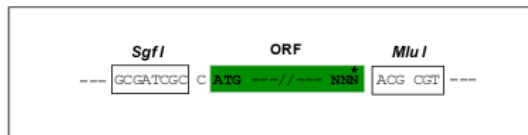
TRTRPLEQKLISEEDLAANDILDYKDDDDKV

Restriction Sites:

Sgfl-MluI

Cloning Scheme:

Cloning sites used for ORF Shutting:



* The last codon before the Stop codon of the ORF

ACCN: NM_001011898

ORF Size: 1428 bp

OTI Disclaimer: The molecular sequence of this clone aligns with the gene accession number as a point of reference only. However, individual transcript sequences of the same gene can differ through naturally occurring variations (e.g. polymorphisms), each with its own valid existence. This clone is substantially in agreement with the reference, but a complete review of all prevailing variants is recommended prior to use. [More info](#)

OTI Annotation: This clone was engineered to express the complete ORF with an expression tag. Expression varies depending on the nature of the gene.

Components: The ORF clone is ion-exchange column purified and shipped in a 2D barcoded Matrix tube containing 10ug of transfection-ready, dried plasmid DNA (reconstitute with 100 ul of water).

Reconstitution Method:

1. Centrifuge at 5,000xg for 5min.
2. Carefully open the tube and add 100ul of sterile water to dissolve the DNA.
3. Close the tube and incubate for 10 minutes at room temperature.
4. Briefly vortex the tube and then do a quick spin (less than 5000xg) to concentrate the liquid at the bottom.
5. Store the suspended plasmid at -20°C. The DNA is stable for at least one year from date of shipping when stored at -20°C.

RefSeq: [NM_001011898.1](#), [NP_001011898.1](#)

RefSeq Size: 1976 bp

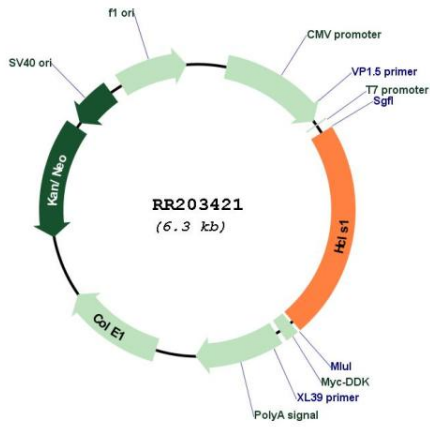
RefSeq ORF: 1431 bp

Locus ID: 288077

Cytogenetics: 11q21

MW: 52.8 kDa

Product images:



Circular map for RR203421